

KD-Validated Anti-Polyamine Modulated Factor 1 Recombinant Rabbit Monoclonal



Catalog #: 62468

Aliases

Polyamine Modulated Factor 1; Polyamine-Modulated Factor 1; Est1p-Like Protein B (EST1B); PMF-1

Background

Gene Name: PMF1

NCBI Gene Entry: [11243](#)

UniProt Entry: [Q6P1K2](#)

Application Information

Molecular Weight: Predicted, 23 kDa, observed, 23 kDa

Clonality: Rabbit monoclonal antibody

Clone ID: 24GB985

Species Reactivity: Human, mouse, rat

Applications Tested: Western blotting (WB), flow cytometry (FCM), immunocytochemistry (IC)

Immunogen

A synthesized peptide derived from human PMF1

Isotype

Rabbit IgG

Storage Buffer

Supplied in PBS (pH 7.4) containing 50% glycerol, and 0.02% sodium azide.

Storage

Store at -20 °C for one year.

Recommended Dilutions

Western Blotting (WB): 1:1,000-1:5,000

Flow Cytometry (FCM): 1:2,000

Immunocytochemistry (IC): 1:100-1:1,000

Note: This product is for research use only.

Validation Data

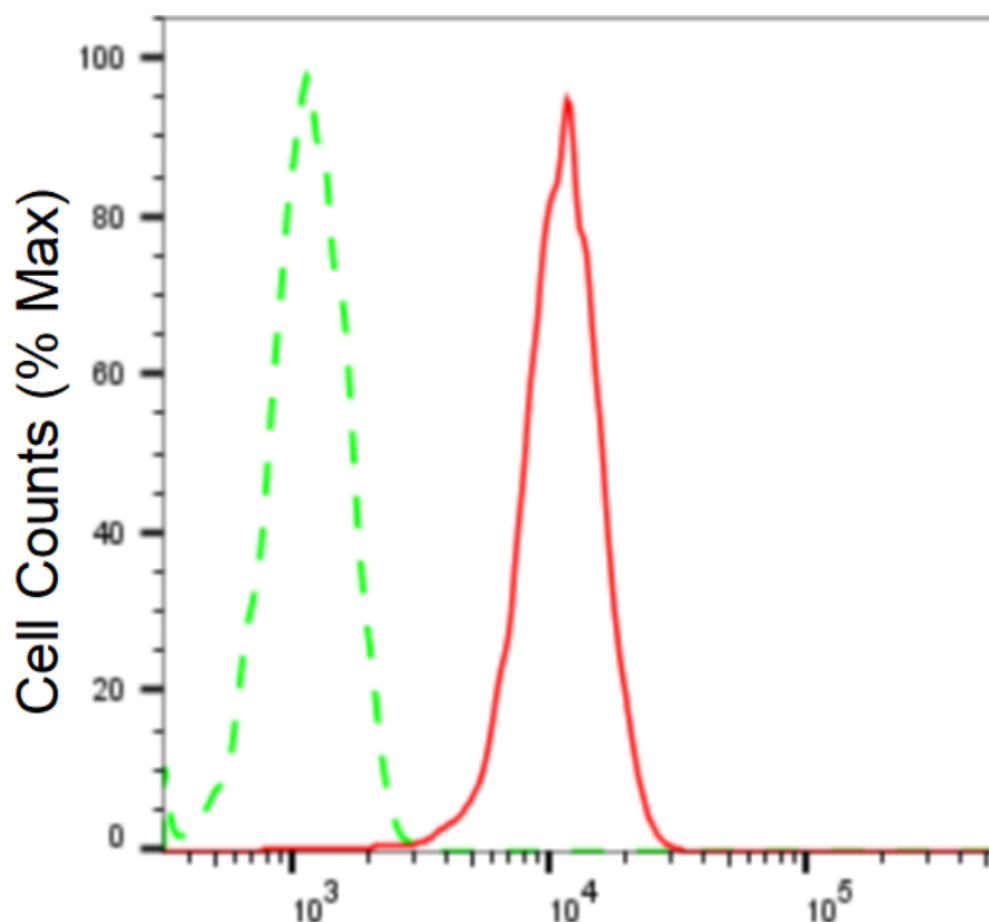
SUPPORT

SUPPORT@GENUINBIOTECH.COM
TEL: +1-540-855-7041

ORDERS

SALES@GENUINBIOTECH.COM
FAX: +1-540-855-7041

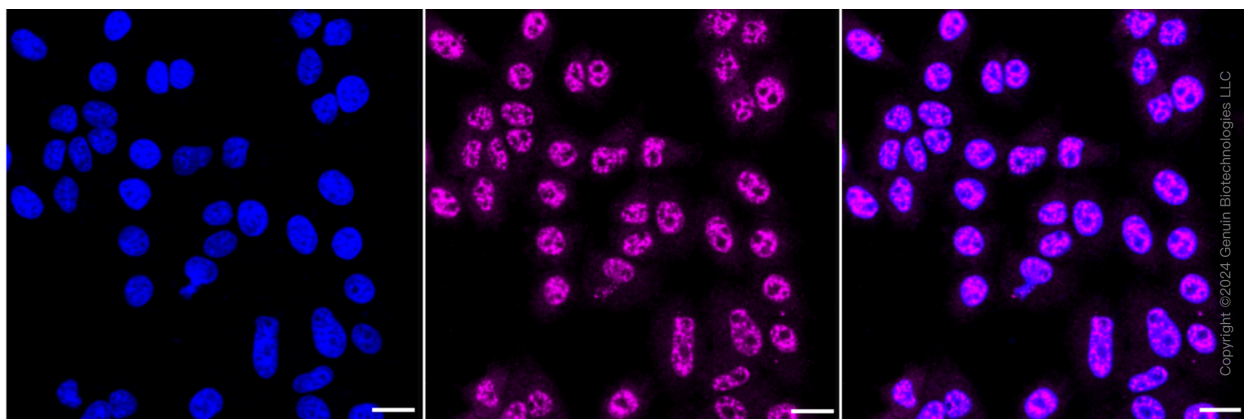
WWW.GENUINBIOTECH.COM



Copyright ©2024 Genuin Biotechnologies LLC

Polyamine modulated factor 1-Alexa Fluor® 647

Flow cytometric analysis of Polyamine modulated factor 1 expression in HepG2 cells using anti-Polyamine modulated factor 1 antibody (Cat#62468, 1:2,000). Green, isotype control; red, Polyamine modulated factor 1.



Copyright ©2024 Genuin Biotechnologies LLC

Immunocytochemical staining of HepG2 cells with anti-Polyamine modulated factor 1 antibody (Cat#62468, 1:1,000). Nuclei were stained blue with DAPI; Polyamine modulated factor 1 was stained magenta with Alexa Fluor® 647. Images were taken using Leica stellaris 5. Protein

SUPPORT

SUPPORT@GENUINBIOTECH.COM
TEL: +1-540-855-7041

ORDERS

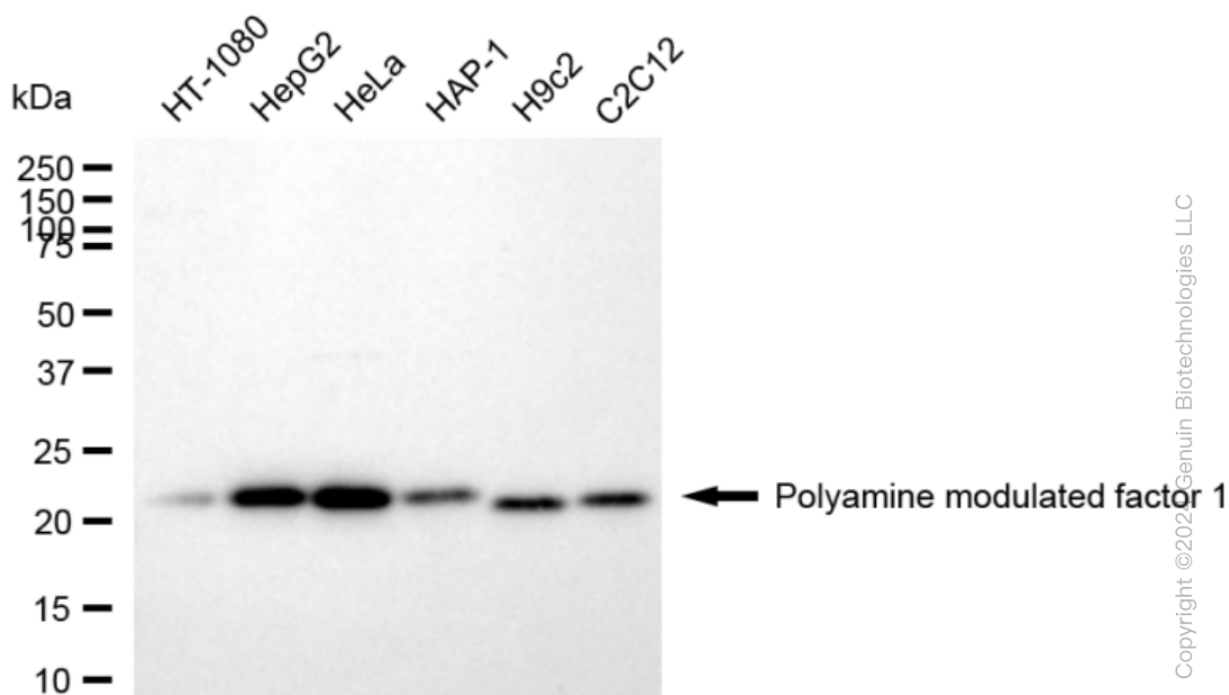
SALES@GENUINBIOTECH.COM
FAX: +1-540-855-7041

WWW.GENUINBIOTECH.COM

KD-Validated Anti-Polyamine Modulated Factor 1 Recombinant Rabbit Monoclonal

PAGE 3

abundance based on laser Intensity and smart gain: High. Scale bar: 20 μ m.



Western blotting analysis using anti-Polyamine modulated factor 1 antibody (Cat#62468). Total cell lysates (30 μ g) from various cell lines were loaded and separated by SDS-PAGE. The blot was incubated with anti-Polyamine modulated factor 1 antibody (Cat#62468, 1:5,000) and HRP-conjugated goat anti-rabbit secondary antibody (Cat#201, 1:20,000) respectively. Image was developed using FeQ™ ECL Substrate Kit (Cat#226).

SUPPORT

SUPPORT@GENUINBIOTECH.COM
TEL: +1-540-855-7041

ORDERS

SALES@GENUINBIOTECH.COM
FAX: +1-540-855-7041

WWW.GENUINBIOTECH.COM

