

KD-Validated Anti-Prolyl Endopeptidase Like Recombinant Rabbit Monoclonal Antibody



Catalog #: 62470

Aliases

Prolyl Endopeptidase Like; Prolyl Endopeptidase-Like; KIAA0436; Putative Prolyl Oligopeptidase; Prolylendopeptidase-Like; EC 3.4.21.83; EC 3.4.21.-; EC 3.4.21; CMS22

Background

Gene Name: PREPL

NCBI Gene Entry: [9581](#)

UniProt Entry: [Q4J6C6](#)

Application Information

Molecular Weight: Predicted, 84 kDa, observed, 70 kDa

Clonality: Rabbit monoclonal antibody

Clone ID: 24GB995

Species Reactivity: Human, mouse, rat

Applications Tested: Western blotting (WB), flow cytometry (FCM), immunocytochemistry (IC)

Immunogen

A synthesized peptide derived from human PREPL

Isotype

Rabbit IgG

Storage Buffer

Supplied in PBS (pH 7.4) containing 50% glycerol, and 0.02% sodium azide.

Storage

Store at -20 °C for one year.

Recommended Dilutions

Western Blotting (WB): 1:1,000-1:5,000

Flow Cytometry (FCM): 1:2,000

Immunocytochemistry (IC): 1:100-1:1,000

Note: This product is for research use only.

Validation Data

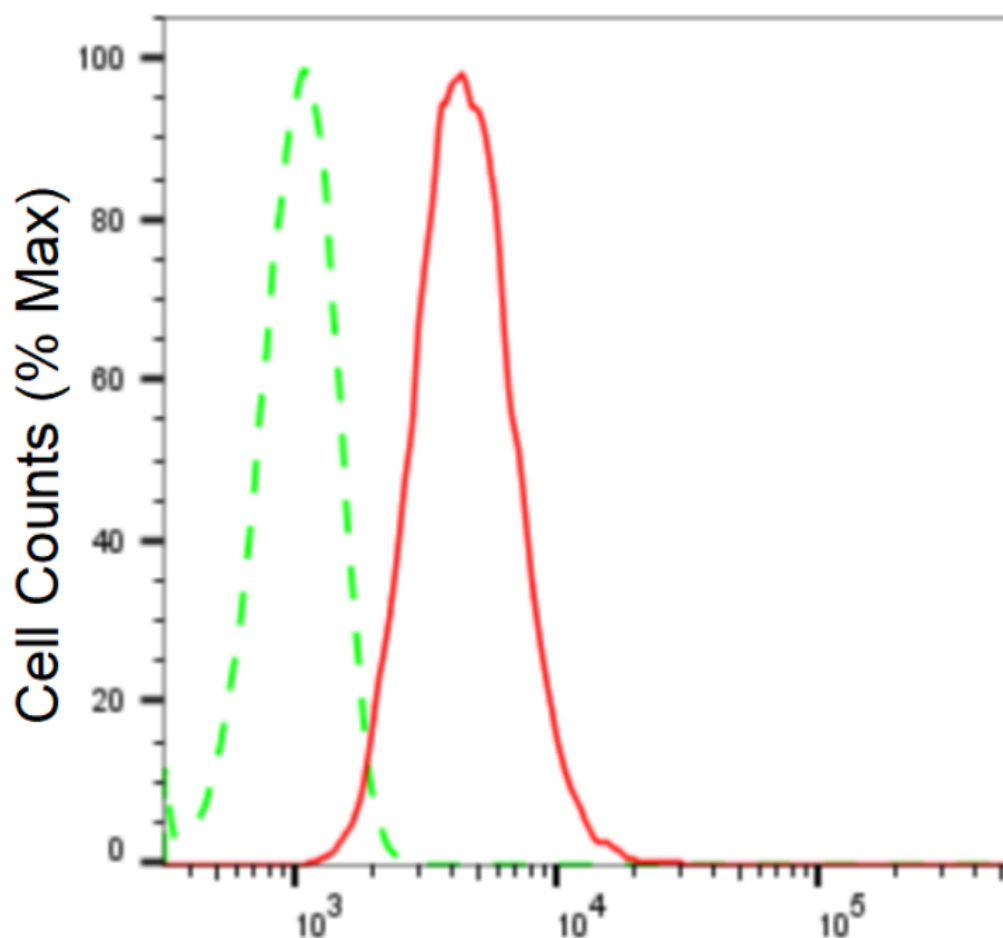
SUPPORT

SUPPORT@GENUINBIOTECH.COM
TEL: +1-540-855-7041

ORDERS

SALES@GENUINBIOTECH.COM
FAX: +1-540-855-7041

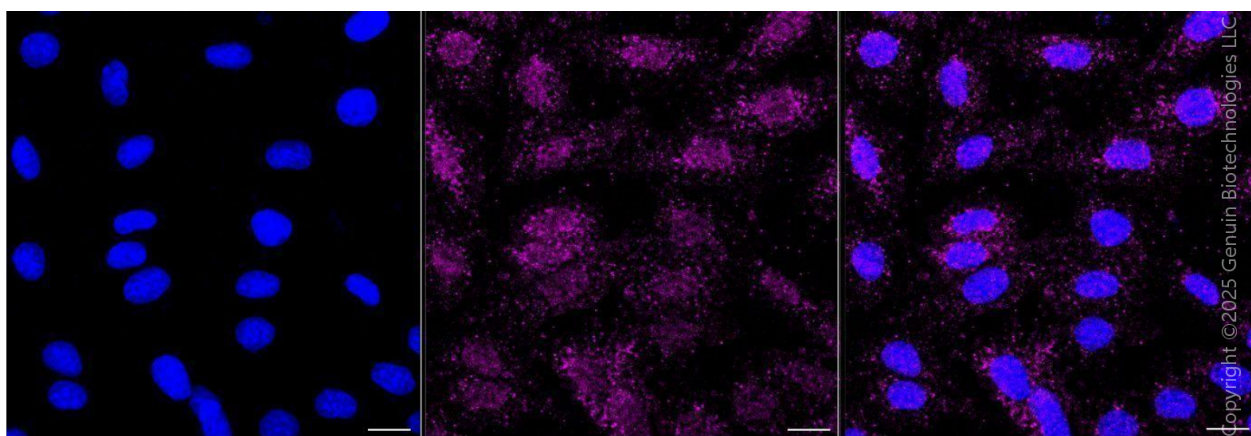
WWW.GENUINBIOTECH.COM



Copyright ©2024 Genuin Biotechnologies LLC

Prolyl endopeptidase like-Alexa Fluor® 647

Flow cytometric analysis of Prolyl endopeptidase like expression in H9c2 cells using anti-Prolyl endopeptidase like antibody (Cat#62470, 1:2,000). Green, isotype control; red, Prolyl endopeptidase like.



Copyright ©2025 Genuin Biotechnologies LLC

Immunocytochemical staining of H9C2 cells with anti-Prolyl endopeptidase like antibody (Cat#62470, 1:1,000). Nuclei were stained blue with DAPI; Prolyl endopeptidase like was

SUPPORT

SUPPORT@GENUINBIOTECH.COM
TEL: +1-540-855-7041

ORDERS

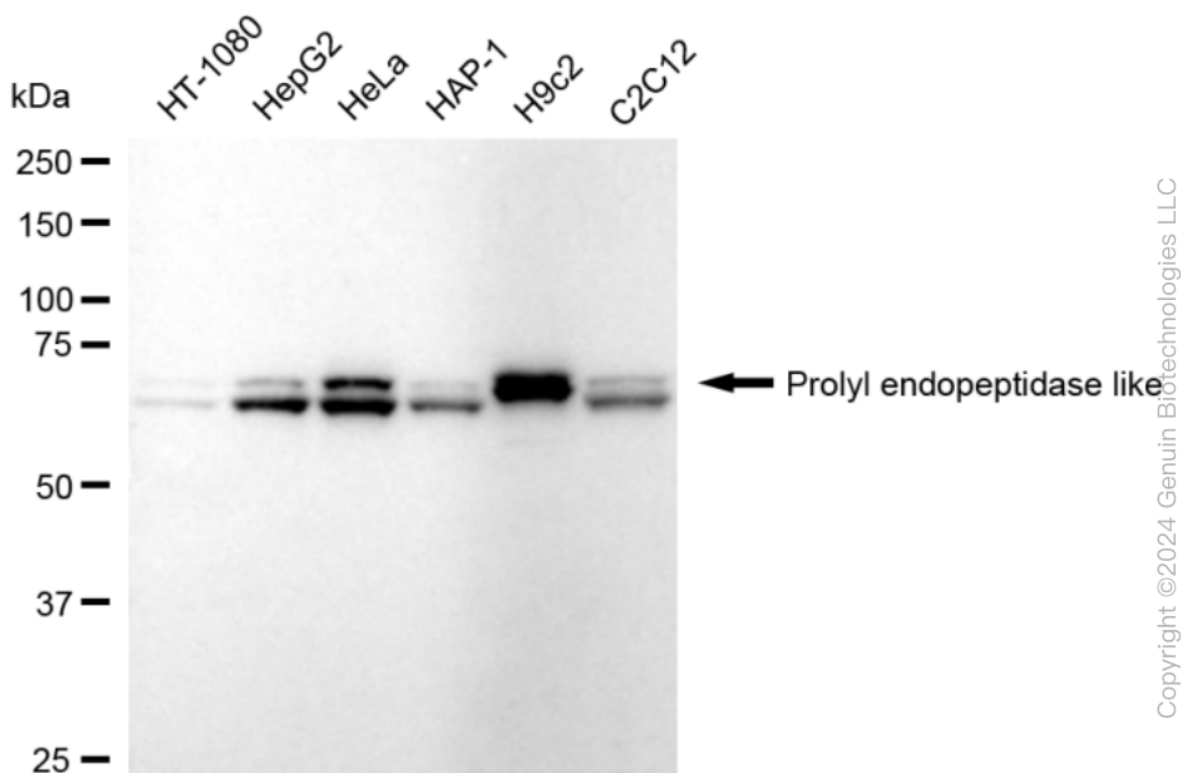
SALES@GENUINBIOTECH.COM
FAX: +1-540-855-7041

WWW.GENUINBIOTECH.COM

KD-Validated Anti-Prolyl Endopeptidase Like Recombinant Rabbit Monoclonal Antibody

PAGE 3

stained magenta with Alexa Fluor® 647. Images were taken using Leica stellaris 5. Protein abundance based on laser Intensity and smart gain: Medium. Scale bar, 20 μ m.



Western blotting analysis using anti-Prolyl endopeptidase like antibody (Cat#62470). Total cell lysates (30 μ g) from various cell lines were loaded and separated by SDS-PAGE. The blot was incubated with anti-Prolyl endopeptidase like antibody (Cat#62470, 1:5,000) and HRP-conjugated goat anti-rabbit secondary antibody (Cat#201, 1:20,000) respectively. Image was developed using FeQ™ ECL Substrate Kit (Cat#226).

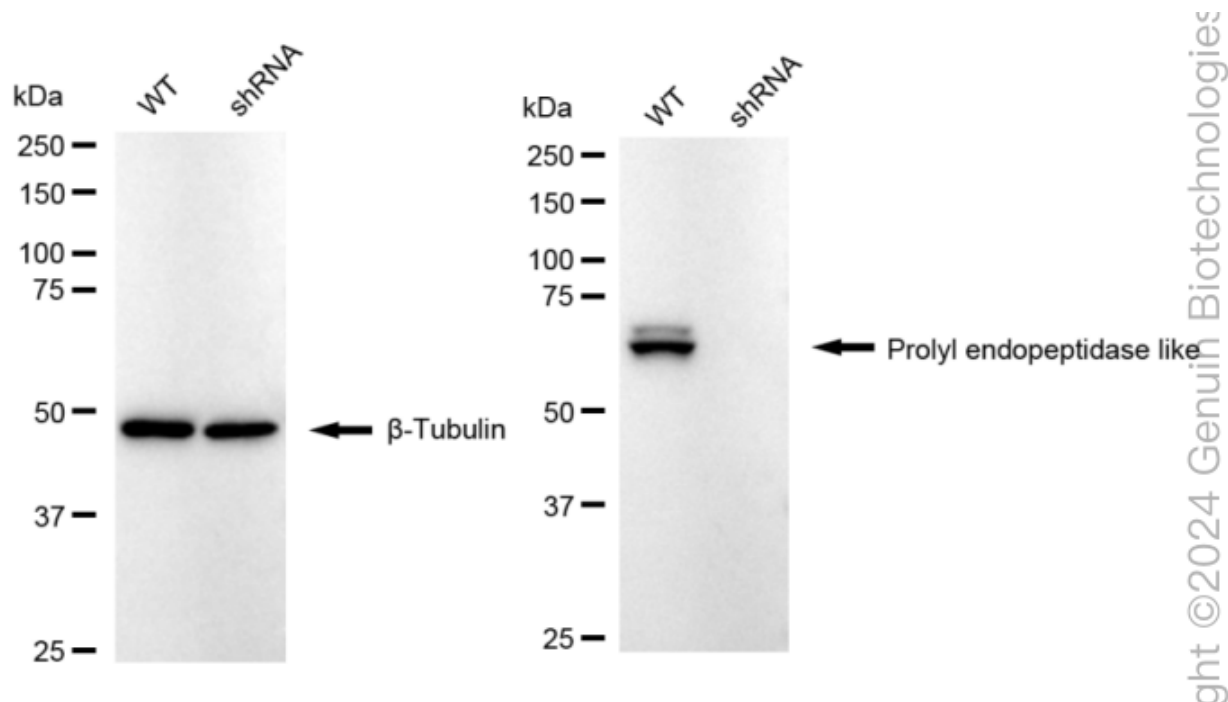
SUPPORT

SUPPORT@GENUINBIOTECH.COM
TEL: +1-540-855-7041

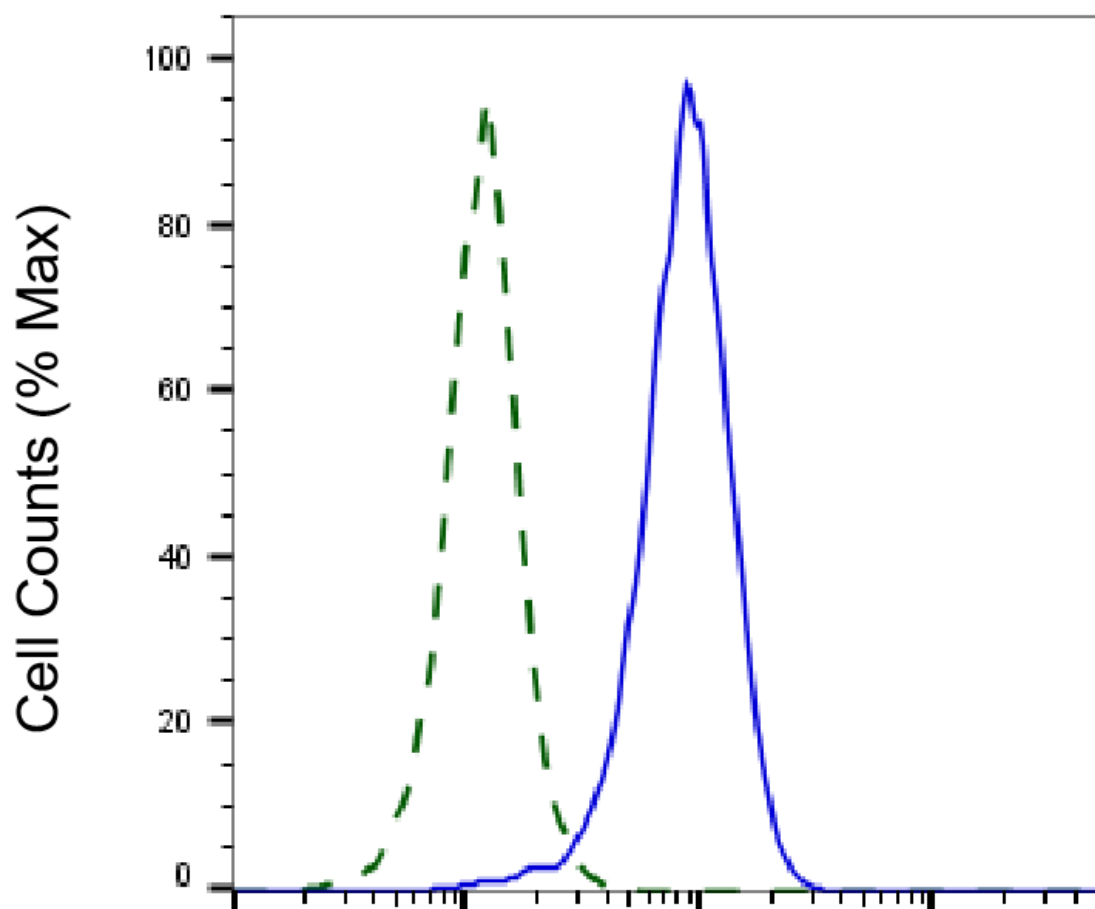
ORDERS

SALES@GENUINBIOTECH.COM
FAX: +1-540-855-7041

WWW.GENUINBIOTECH.COM



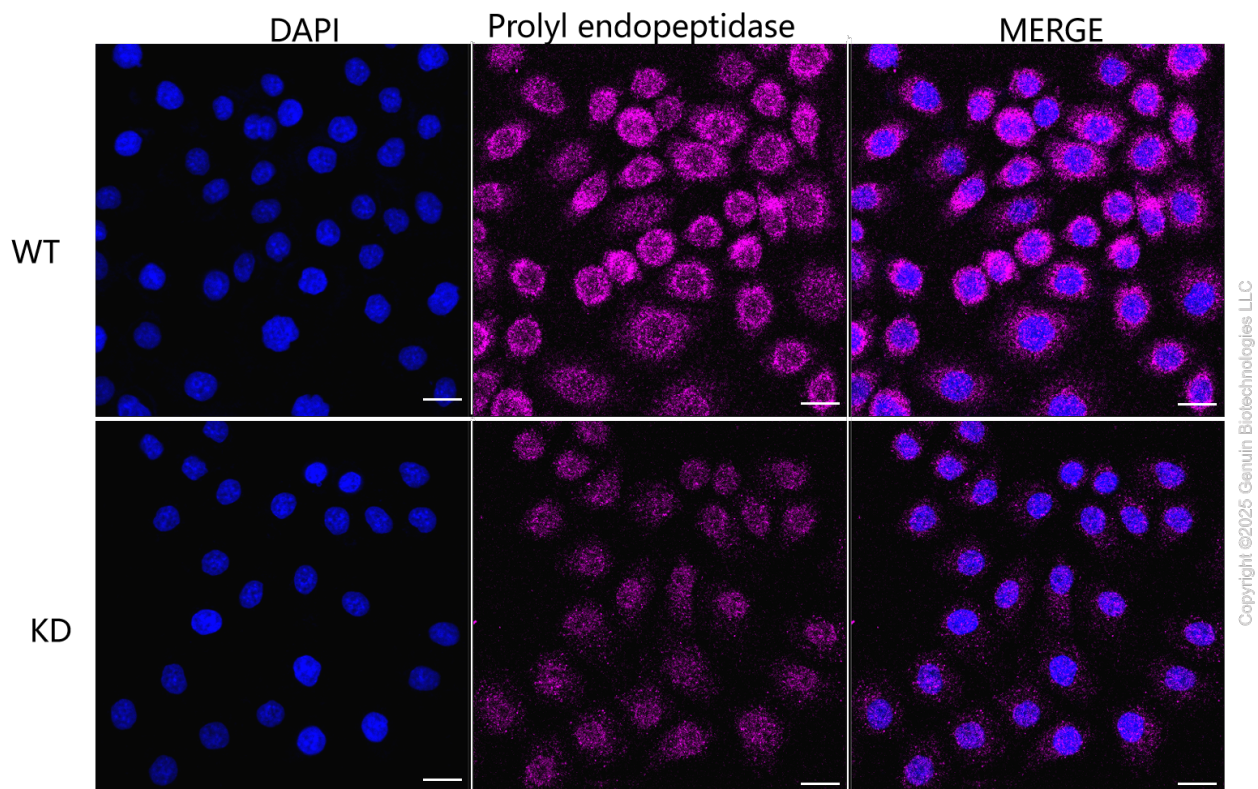
Western blotting analysis using anti-Prolyl endopeptidase like antibody (Cat#62470). Prolyl endopeptidase like expression in wild type (WT) and Prolyl endopeptidase like shRNA knockdown (KD) HeLa cells with 20 µg of total cell lysates. β-Tubulin serves as a loading control. The blot was incubated with anti-Prolyl endopeptidase like antibody (Cat#62470, 1:5,000) and HRP-conjugated goat anti-rabbit secondary antibody (Cat#201, 1:20,000) respectively. Image was developed using NaQ™ ECL Substrate Kit (Cat#716).



Copyright ©2025 Genuin Biotechnologies LLC

Prolyl endopeptidase like-Alexa Fluor® 647

Validation of Prolyl endopeptidase like knockdown using flow cytometry. Wild-type(WT, Blue) and knockdown(KD, Green) HeLa cells were stained with anti-Prolyl endopeptidase like antibody (Cat#62470, 1:2,000) and analyzed using BD flow cytometer.



Immunocytochemical staining of HeLa cells using anti-Prolyl endopeptidase like antibody (Cat#62470, 1:1,000), Top panel: wild-type (WT); Bottom panel: Prolyl endopeptidase like shRNA knockdown (KD). Nuclei were stained blue with DAPI; Prolyl endopeptidase like was stained magenta with Alexa Fluor® 647. Scale bar, 20 μ m. Permeabilization: Triton.