

# KD-Validated Anti-Retinoic Acid Receptor beta Recombinant Rabbit Monoclonal Antibody



**Catalog #: 62480**

## Aliases

Retinoic Acid Receptor Beta; RAR-Beta; NR1B2; HAP; RARbeta; RRB2; Nuclear Receptor Subfamily 1 Group B Member 2; HBV-Activated Protein; RAR-Epsilon; Retinoic Acid Receptor, Beta Polypeptide; Hepatitis B Virus Activated Protein; Retinoic Acid Receptor, Beta; RARbeta1; MCOPS12

## Background

Gene Name: RARB

NCBI Gene Entry: [5915](#)

UniProt Entry: [P10826](#)

## Application Information

Molecular Weight: Predicted, 50 kDa, observed, 55 kDa

Clonality: Rabbit monoclonal antibody

Clone ID: 24GB1045

Species Reactivity: Human

Applications Tested: Western blotting (WB), flow cytometry (FCM), immunocytochemistry (IC)

## Immunogen

A synthesized peptide derived from human Retinoic Acid Receptor beta

## Isotype

Rabbit IgG

## Storage Buffer

Supplied in PBS (pH 7.4) containing 50% glycerol, and 0.02% sodium azide.

## Storage

Store at -20 °C for one year.

## Recommended Dilutions

Western Blotting (WB): 1:1,000-1:5,000

Flow Cytometry (FCM): 1:2,000

Immunocytochemistry (IC): 1:100-1:1,000

---

### SUPPORT

SUPPORT@GENUINBIOTECH.COM  
TEL: +1-540-855-7041

### ORDERS

SALES@GENUINBIOTECH.COM  
FAX: +1-540-855-7041

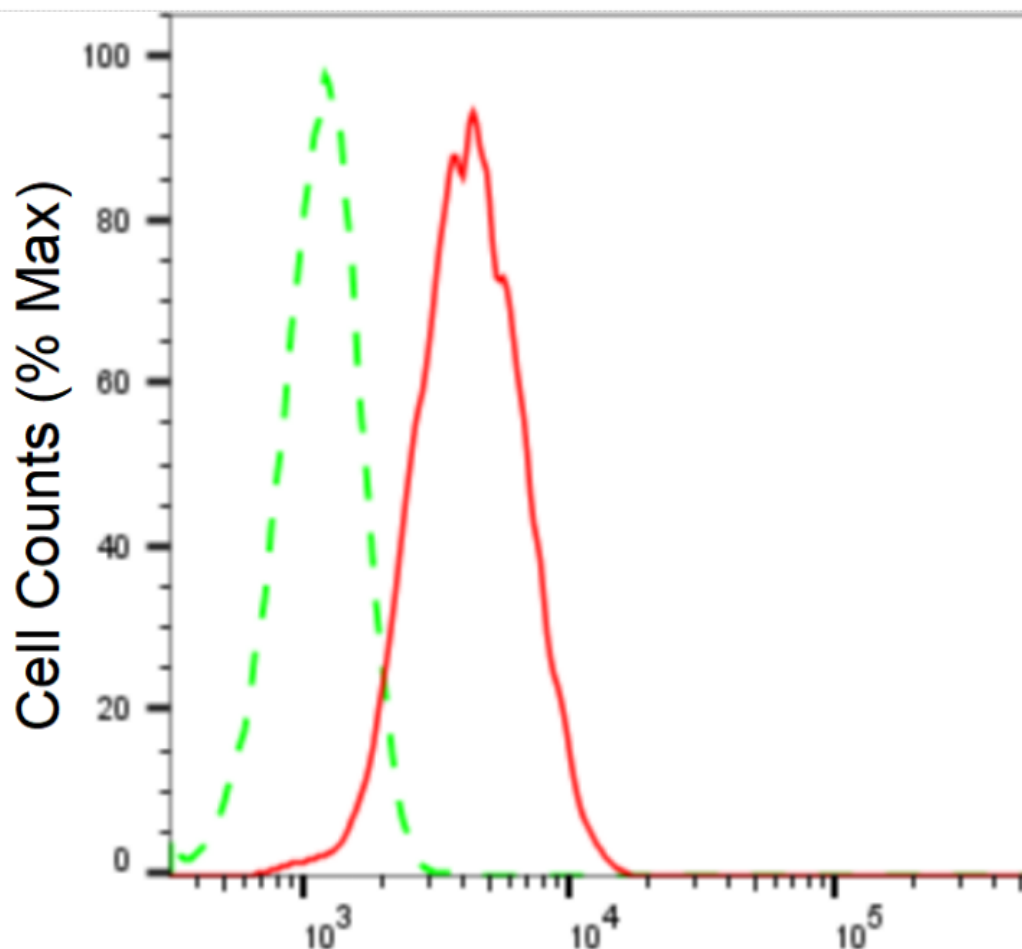
[WWW.GENUINBIOTECH.COM](http://WWW.GENUINBIOTECH.COM)

## KD-Validated Anti-Retinoic Acid Receptor beta Recombinant Rabbit Monoclonal Antibody

PAGE 2

**Note:** This product is for research use only.

### Validation Data



Copyright ©2024 Genuin Biotechnologies LLC

### Retinoic acid receptor beta-Alexa Fluor® 647

Flow cytometric analysis of Retinoic acid receptor beta expression in HeLa cells using Retinoic acid receptor beta antibody (Cat#62480, 1:2,000). Green, isotype control; red, Retinoic acid receptor beta.

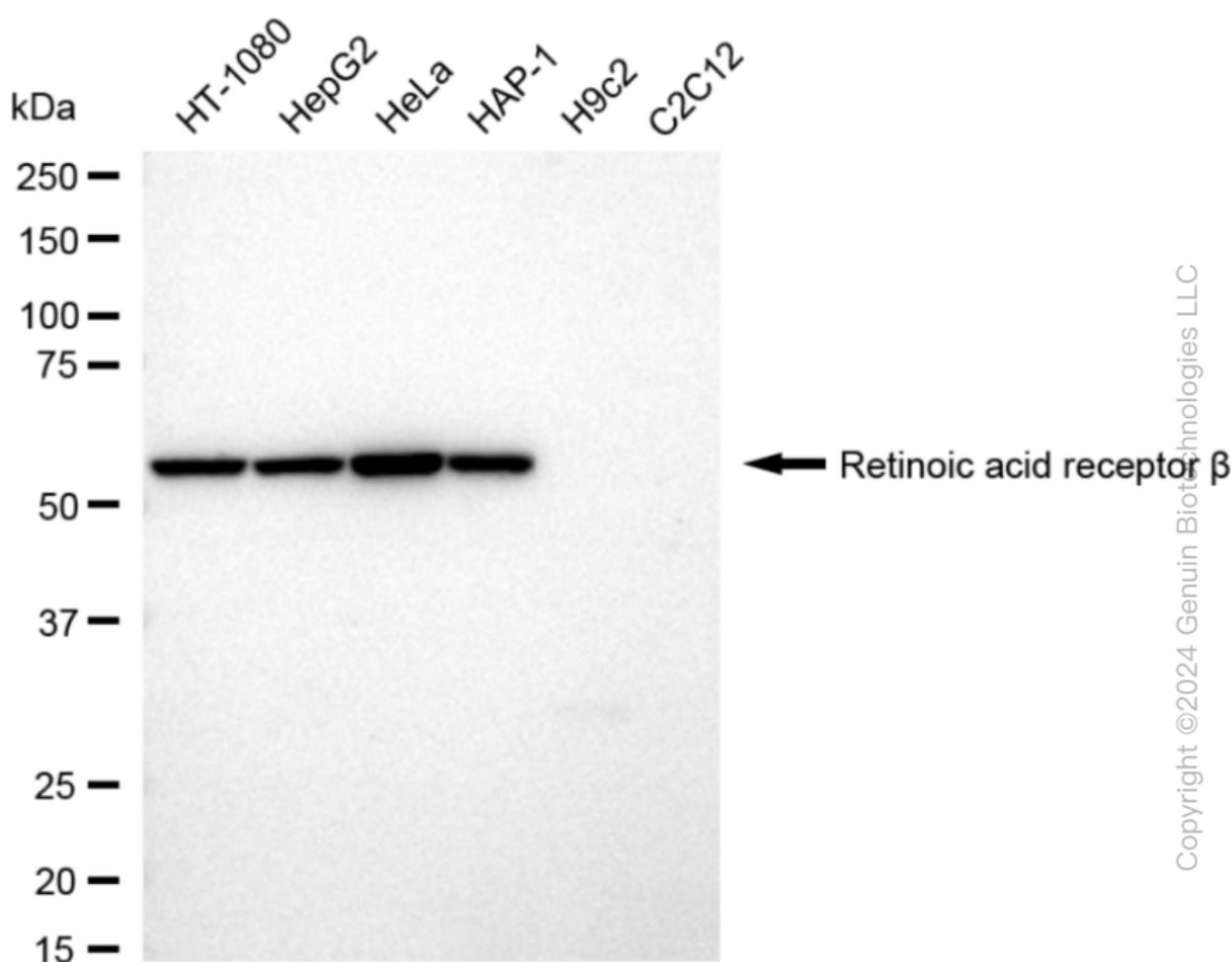
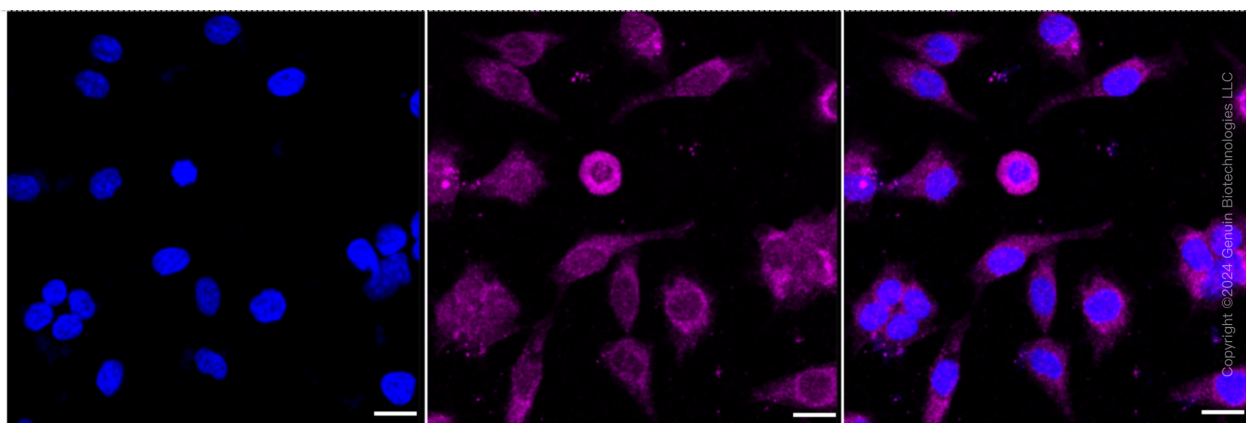
#### SUPPORT

SUPPORT@GENUINBIOTECH.COM  
TEL: +1-540-855-7041

#### ORDERS

SALES@GENUINBIOTECH.COM  
FAX: +1-540-855-7041

[WWW.GENUINBIOTECH.COM](http://WWW.GENUINBIOTECH.COM)



Western blotting analysis using anti-Retinoic acid receptor beta antibody (Cat#62480). Total cell lysates (30 µg) from various cell lines were loaded and separated by SDS-PAGE. The blot was

## SUPPORT

SUPPORT@GENUINBIOTECH.COM  
TEL: +1-540-855-7041

## ORDERS

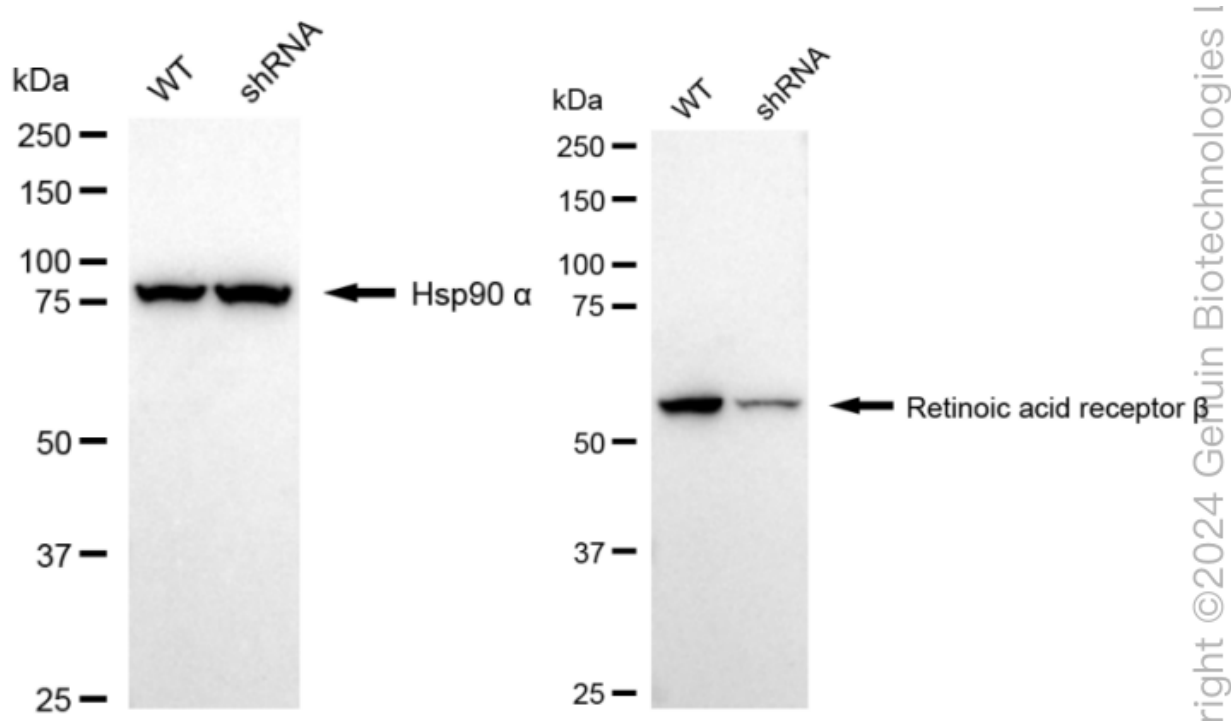
SALES@GENUINBIOTECH.COM  
FAX: +1-540-855-7041

[WWW.GENUINBIOTECH.COM](http://WWW.GENUINBIOTECH.COM)

## KD-Validated Anti-Retinoic Acid Receptor beta Recombinant Rabbit Monoclonal Antibody

PAGE 4

incubated with anti-Retinoic acid receptor beta antibody (Cat#62480, 1:5,000) and HRP-conjugated goat anti-rabbit secondary antibody (Cat#201, 1:20,000) respectively. Image was developed using FeQ™ ECL Substrate Kit (Cat#226).



Western blotting analysis using anti-Retinoic Acid Receptor beta antibody (Cat#62480). Retinoic Acid Receptor beta expression in wild type (WT) and Retinoic Acid Receptor beta shRNA knockdown (KD) HeLa cells with 20 µg of total cell lysates. Hsp90 α serves as a loading control. The blot was incubated with anti-Retinoic Acid Receptor beta antibody (Cat#62480, 1:5,000) and HRP-conjugated goat anti-rabbit secondary antibody (Cat#201, 1:20,000) respectively. Image was developed using NaQ™ ECL Substrate Kit (Cat#716).

### SUPPORT

SUPPORT@GENUINBIOTECH.COM  
TEL: +1-540-855-7041

### ORDERS

SALES@GENUINBIOTECH.COM  
FAX: +1-540-855-7041

WWW.GENUINBIOTECH.COM