

KD-Validated Anti-RAD23A Recombinant Rabbit Monoclonal Antibody



Catalog #: 62488

Aliases

RAD23 Homolog A, Nucleotide Excision Repair Protein; HHR23A; UV Excision Repair Protein
RAD23 Homolog A; RAD23, Yeast Homolog, A; MGC111083; HR23A; RAD23 (S. Cerevisiae)
Homolog A; RAD23 Homolog A (S. Cerevisiae)

Background

Gene Name: RAD23A

NCBI Gene Entry: [5886](#)

UniProt Entry: [P54725](#)

Application Information

Molecular Weight: Predicted, 40 kDa, observed, 55 kDa

Clonality: Rabbit monoclonal antibody

Clone ID: 24GB1080

Species Reactivity: Human, mouse

Applications Tested: Western blotting (WB), flow cytometry (FCM), immunocytochemistry (IC)

Immunogen

A synthesized peptide derived from human RAD23A

Isotype

Rabbit IgG

Storage Buffer

Supplied in PBS (pH 7.4) containing 50% glycerol, and 0.02% sodium azide.

Storage

Store at -20 °C for one year.

Recommended Dilutions

Western Blotting (WB): 1:1,000-1:5,000

Flow Cytometry (FCM): 1:2,000

Immunocytochemistry (IC): 1:100-1:1,000

Note: This product is for research use only.

SUPPORT

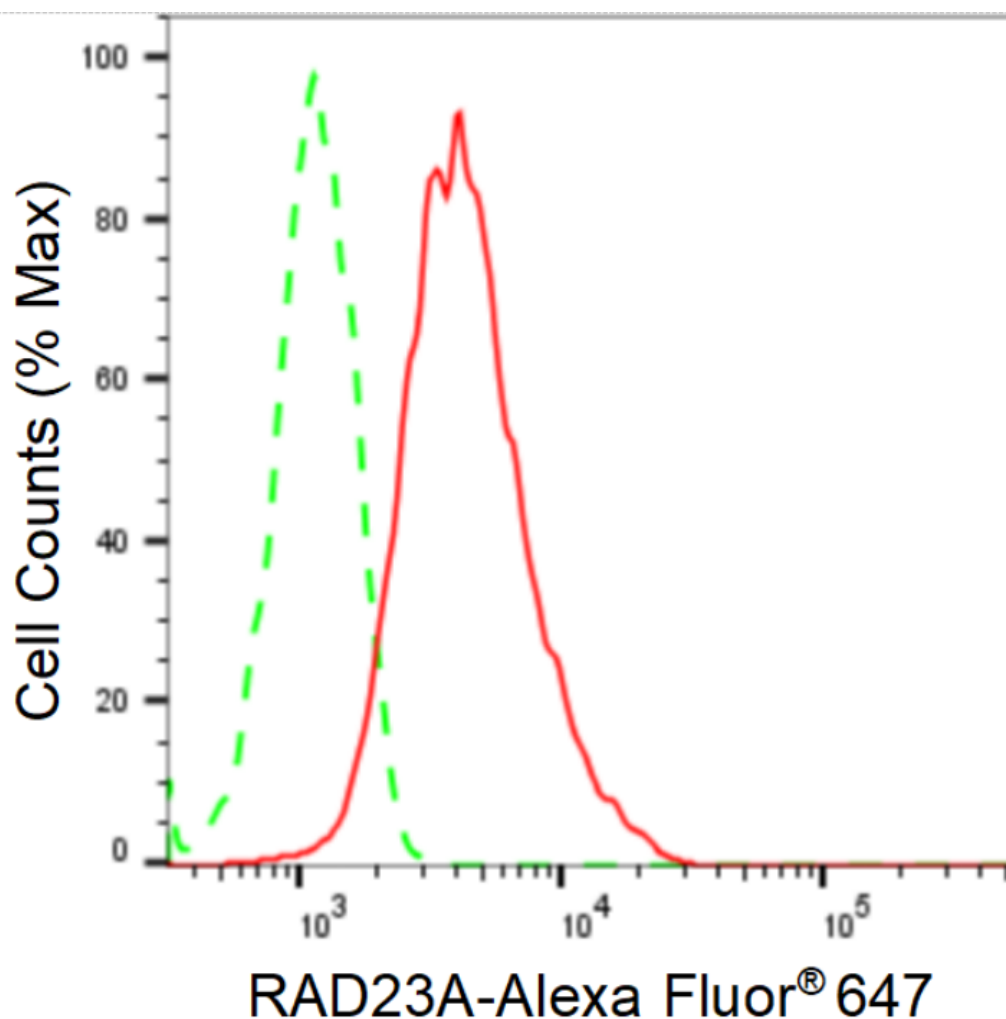
SUPPORT@GENUINBIOTECH.COM
TEL: +1-540-855-7041

ORDERS

SALES@GENUINBIOTECH.COM
FAX: +1-540-855-7041

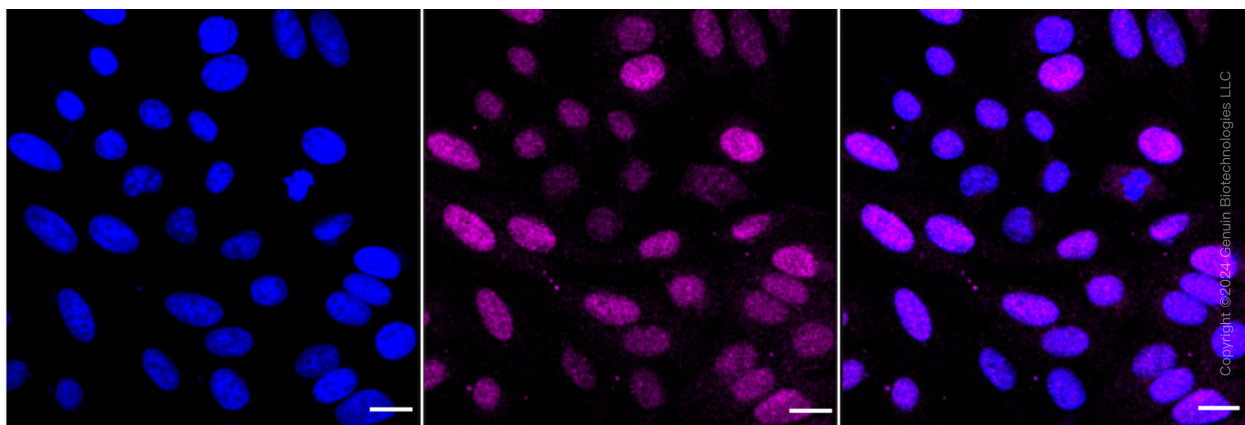
WWW.GENUINBIOTECH.COM

Validation Data



Copyright ©2024 Genuin Biotechnologies LLC

Flow cytometric analysis of RAD23A expression in HepG2 cells using anti-RAD23A antibody (Cat#62488, 1:2,000). Green, isotype control; red, RAD23A.



Copyright ©2024 Genuin Biotechnologies LLC

Immunocytochemical staining of HepG2 cells with anti-RAD23A antibody (Cat#62488, 1:1,000).

SUPPORT

SUPPORT@GENUINBIOTECH.COM
TEL: +1-540-855-7041

ORDERS

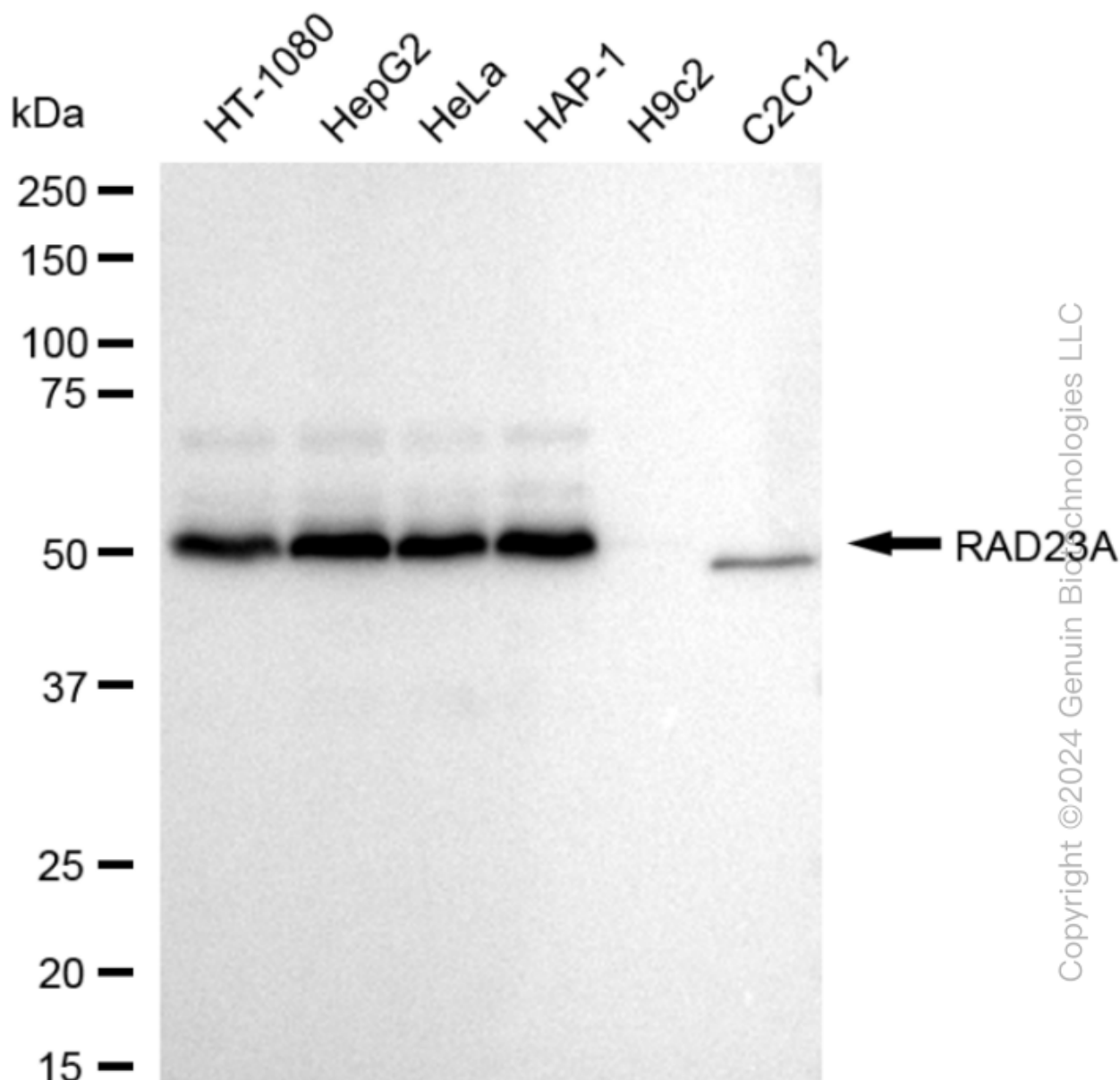
SALES@GENUINBIOTECH.COM
FAX: +1-540-855-7041

WWW.GENUINBIOTECH.COM

KD-Validated Anti-RAD23A Recombinant Rabbit Monoclonal Antibody

PAGE 3

Nuclei were stained blue with DAPI; RAD23A was stained magenta with Alexa Fluor® 647. Images were taken using Leica stellaris 5. Protein abundance based on laser Intensity and smart gain: Medium. Scale bar: 20 μ m.



Western blotting analysis using anti-RAD23A antibody (Cat#62488). Total cell lysates (30 μ g) from various cell lines were loaded and separated by SDS-PAGE. The blot was incubated with anti-RAD23A antibody (Cat#62488, 1:5,000) and HRP-conjugated goat anti-rabbit secondary antibody (Cat#201, 1:20,000) respectively. Image was developed using FeQ™ ECL Substrate Kit (Cat#226).

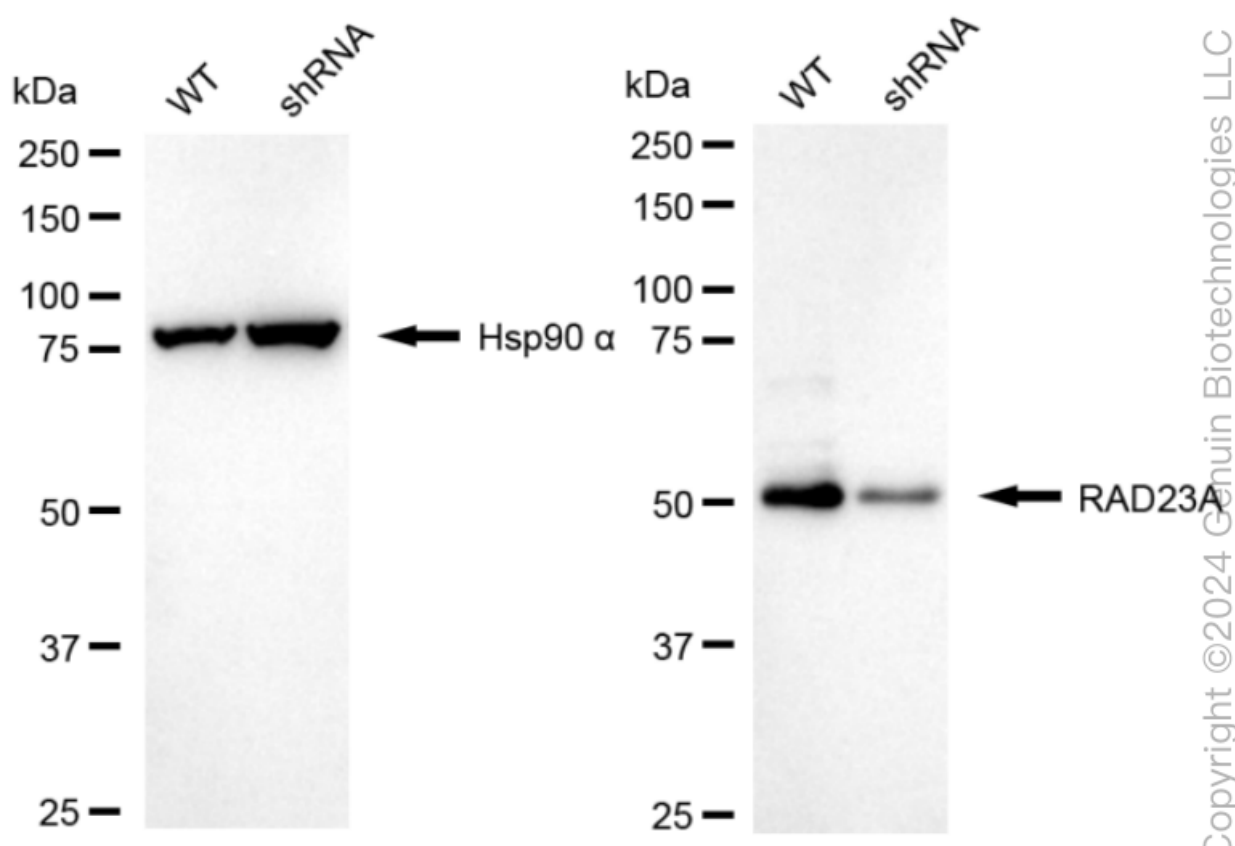
SUPPORT

SUPPORT@GENUINBIOTECH.COM
TEL: +1-540-855-7041

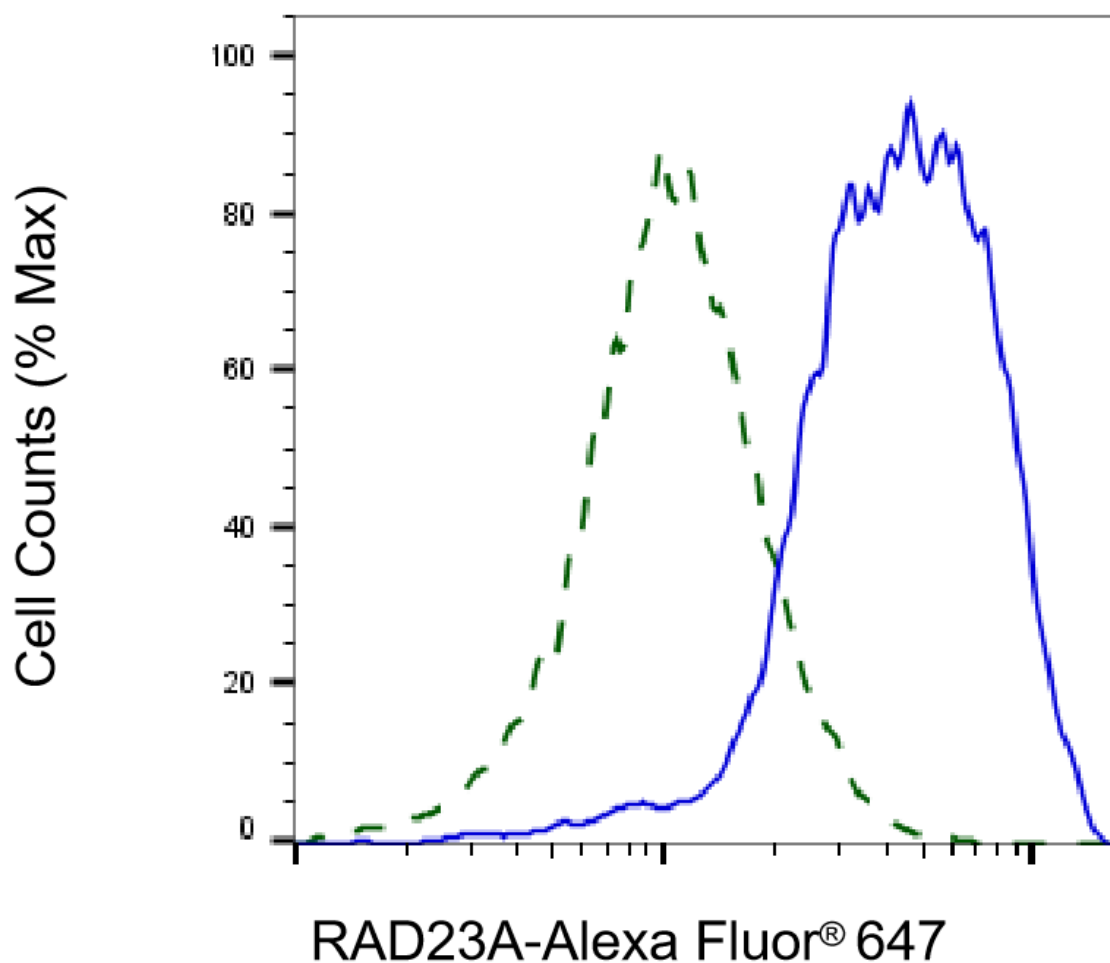
ORDERS

SALES@GENUINBIOTECH.COM
FAX: +1-540-855-7041

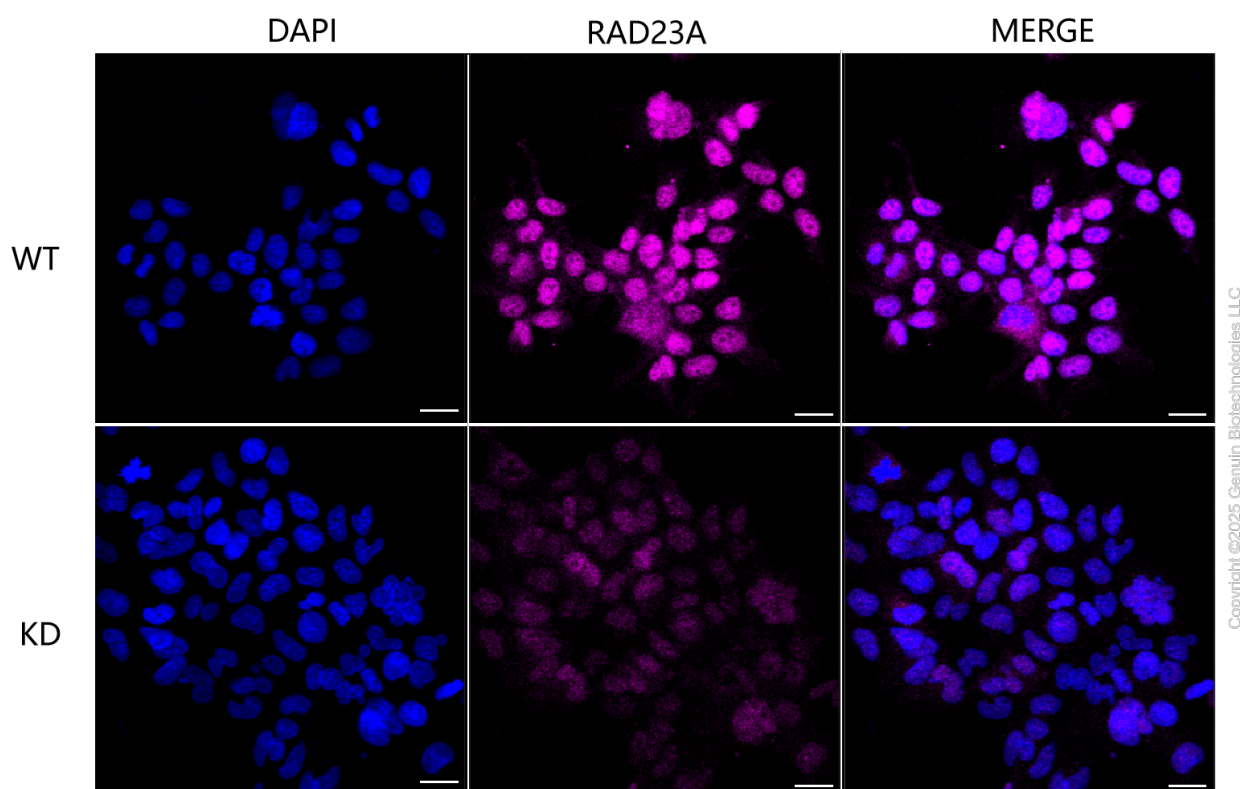
WWW.GENUINBIOTECH.COM



Western blotting analysis using anti-RAD23A antibody (Cat#62488). RAD23A expression in wild type (WT) and RAD23A shRNA knockdown (KD) HeLa cells with 20 µg of total cell lysates. Hsp90 α serves as a loading control. The blot was incubated with anti-RAD23A antibody (Cat#62488, 1:5,000) and HRP-conjugated goat anti-rabbit secondary antibody (Cat#201, 1:20,000) respectively. Image was developed using NaQ™ ECL Substrate Kit (Cat#716).



Validation of RAD23A knockdown using flow cytometry. Wild-type(WT, Blue) and knockdown(KD, Green) HeLa cells were stained with anti-RAD23A antibody (Cat#62488, 1:2,000) and analyzed using BD flow cytometer.



Immunocytochemical staining of HeLa cells using anti-RAD23A antibody (Cat#62488, 1:1,000), Top panel: wild-type (WT); Bottom panel: RAD23A shRNA knockdown (KD). Nuclei were stained blue with DAPI; RAD23A was stained magenta with Alexa Fluor® 647. Scale bar, 20 μ m.