

# KD-Validated Anti-Ribophorin I Recombinant Rabbit Monoclonal Antibody



**Catalog #: 62490**

## Aliases

Ribophorin I; OST1; Dolichyl-Diphosphooligosaccharide--Protein Glycosyltransferase Subunit 1; Oligosaccharyltransferase Complex Subunit (Non-Catalytic); Ribophorin-1; RPN-I; Dolichyl-Diphosphooligosaccharide--Protein Glycosyltransferase 67 KDa Subunit; Dolichyl-Diphosphooligosaccharide-Protein Glycosyltransferase 67 KDa Subunit; Oligosaccharyltransferase 1 Homolog (S. Cerevisiae); Oligosaccharyltransferase 1 Homolog; EC 2.4.1.119; RBPH1

## Background

Gene Name: RPN1

NCBI Gene Entry: [6184](#)

UniProt Entry: [P04843](#)

## Application Information

Molecular Weight: Predicted, 69 kDa, observed, 69 kDa

Clonality: Rabbit monoclonal antibody

Clone ID: 24GB1090

Species Reactivity: Human, mouse, rat

Applications Tested: Western blotting (WB), flow cytometry (FCM), immunocytochemistry (IC)

## Immunogen

A synthesized peptide derived from human PRibophorin I

## Isotype

Rabbit IgG

## Storage Buffer

Supplied in PBS (pH 7.4) containing 50% glycerol, and 0.02% sodium azide.

## Storage

Store at -20 °C for one year.

## Recommended Dilutions

Western Blotting (WB): 1:1,000-1:5,000

Flow Cytometry (FCM): 1:200-1:2,000

Immunocytochemistry (IC): 1:100-1:1,000

---

### SUPPORT

SUPPORT@GENUINBIOTECH.COM  
TEL: +1-540-855-7041

### ORDERS

SALES@GENUINBIOTECH.COM  
FAX: +1-540-855-7041

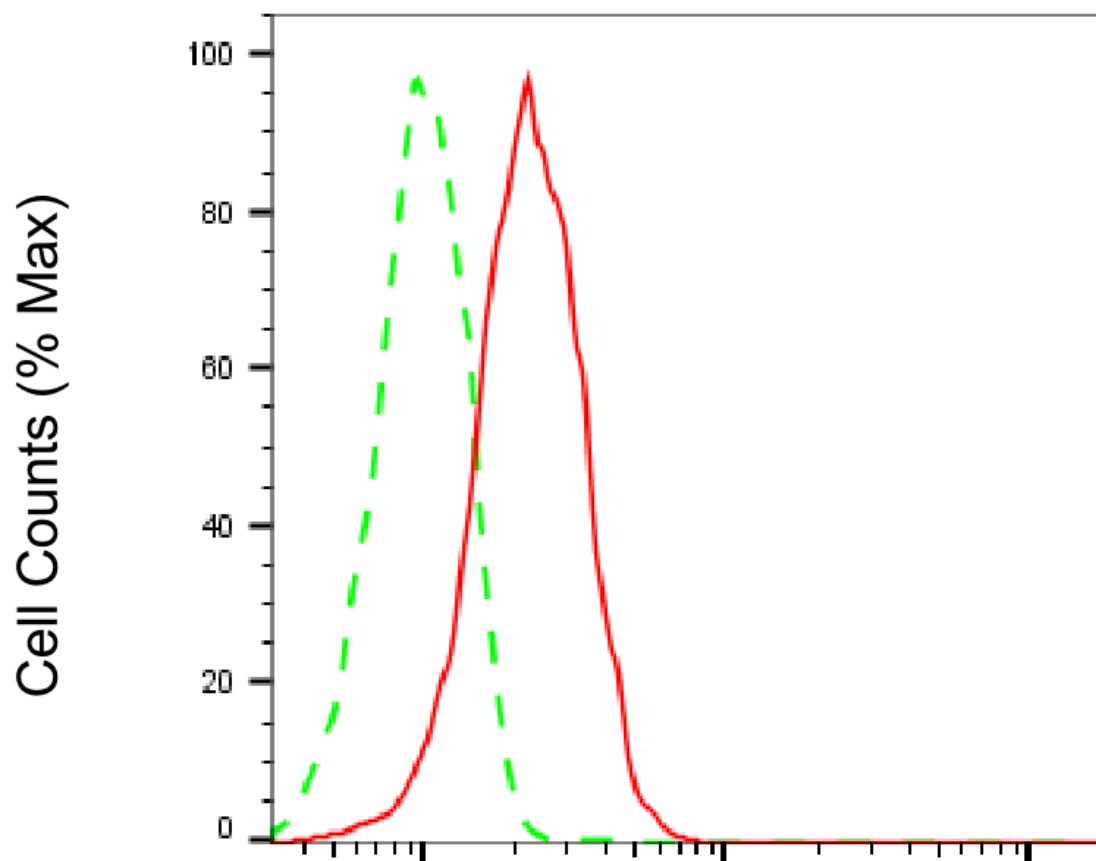
[WWW.GENUINBIOTECH.COM](http://WWW.GENUINBIOTECH.COM)

# KD-Validated Anti-Ribophorin I Recombinant Rabbit Monoclonal Antibody

PAGE 2

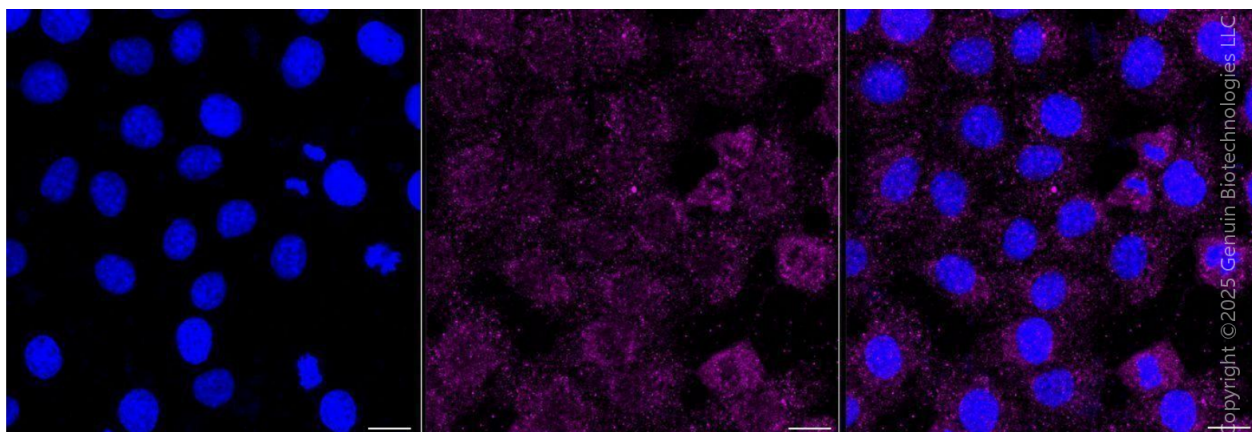
**Note:** This product is for research use only.

## Validation Data



Copyright ©2025 Genuin Biotechnologies LLC

Flow cytometric analysis of Ribophorin I expression in HT-1080 cells using anti-Ribophorin I antibody (Cat#62490, 1:2,000). Green, isotype control; red, Ribophorin I.



### SUPPORT

SUPPORT@GENUINBIOTECH.COM  
TEL: +1-540-855-7041

### ORDERS

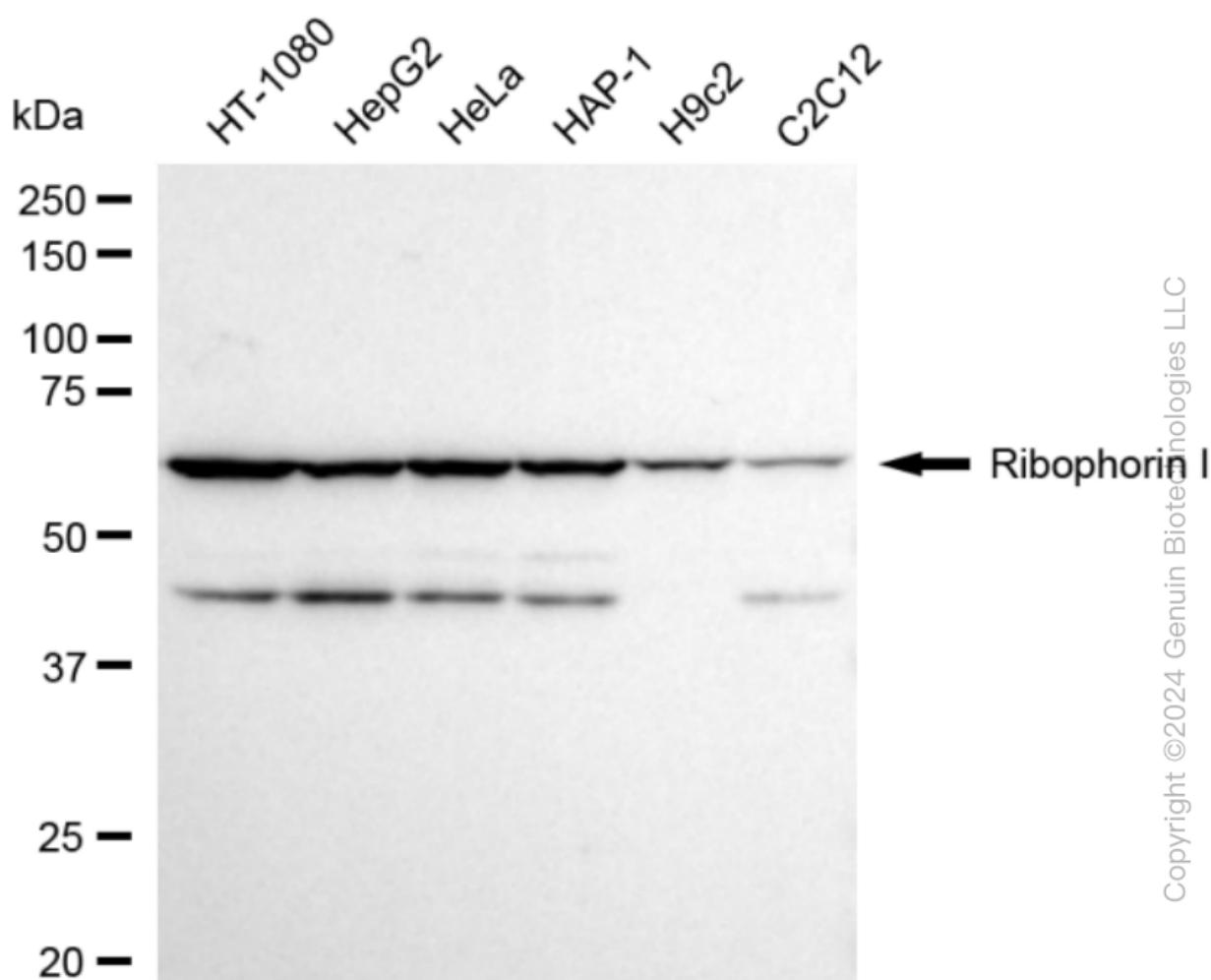
SALES@GENUINBIOTECH.COM  
FAX: +1-540-855-7041

WWW.GENUINBIOTECH.COM

## KD-Validated Anti-Ribophorin I Recombinant Rabbit Monoclonal Antibody

PAGE 3

Immunocytochemical staining of HT-1080 cells with anti-Ribophorin I antibody (Cat#62490, 1:1,000). Nuclei were stained blue with DAPI; Ribophorin I was stained magenta with Alexa Fluor® 647. Images were taken using Leica stellaris 5. Protein abundance based on laser Intensity and smart gain: Medium. Scale bar, 20  $\mu$ m.



Western blotting analysis using anti-Ribophorin I antibody (Cat#62490). Total cell lysates (30  $\mu$ g) from various cell lines were loaded and separated by SDS-PAGE. The blot was incubated with anti-Ribophorin I antibody (Cat#62490, 1:5,000) and HRP-conjugated goat anti-rabbit secondary antibody (Cat#201, 1:20,000) respectively. Image was developed using FeQ™ ECL Substrate Kit (Cat#226).

### SUPPORT

SUPPORT@GENUINBIOTECH.COM  
TEL: +1-540-855-7041

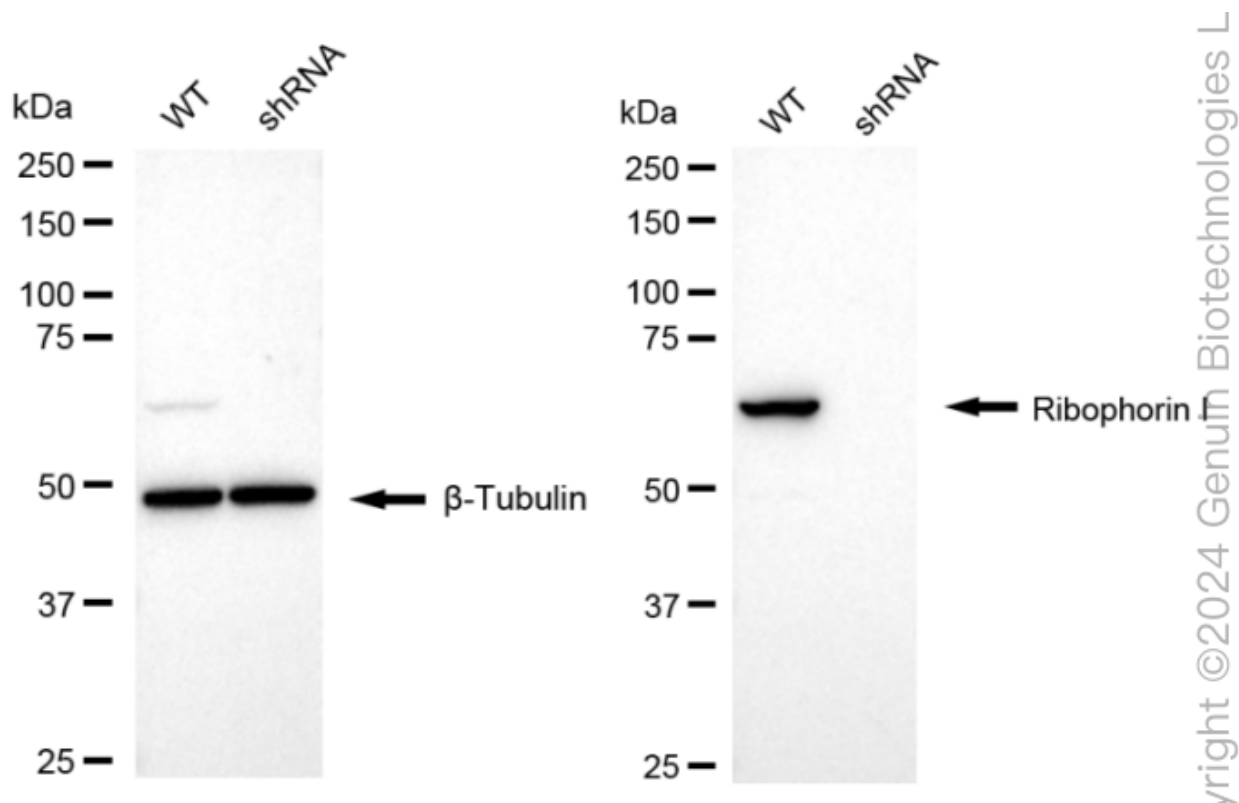
### ORDERS

SALES@GENUINBIOTECH.COM  
FAX: +1-540-855-7041

WWW.GENUINBIOTECH.COM

## KD-Validated Anti-Ribophorin I Recombinant Rabbit Monoclonal Antibody

PAGE 4



Western blotting analysis using anti-Ribophorin I antibody (Cat#62490). Ribophorin I expression in wild type (WT) and Ribophorin I shRNA knockdown (KD) HeLa cells with 20 µg of total cell lysates. β-Tubulin serves as a loading control. The blot was incubated with anti-Ribophorin I antibody (Cat#62490, 1:5,000) and HRP-conjugated goat anti-rabbit secondary antibody (Cat#201, 1:20,000) respectively. Image was developed using NaQ™ ECL Substrate Kit (Cat#716).

### SUPPORT

SUPPORT@GENUINBIOTECH.COM  
TEL: +1-540-855-7041

### ORDERS

SALES@GENUINBIOTECH.COM  
FAX: +1-540-855-7041

WWW.GENUINBIOTECH.COM