

# KD-Validated Anti-PELP1 Recombinant Rabbit Monoclonal Antibody



**Catalog #: 62501**

## Aliases

Proline, Glutamate And Leucine Rich Protein 1; MNAR; Modulator Of Non-Genomic Activity Of Estrogen Receptor; Proline-, Glutamic Acid- And Leucine-Rich Protein 1; Transcription Factor HMX3; Proline, Glutamic Acid And Leucine Rich Protein 1; Proline And Glutamic Acid Rich Nuclear Protein; P160; HMX3

## Background

Gene Name: PELP1

NCBI Gene Entry: [27043](#)

UniProt Entry: [Q8IZL8](#)

## Application Information

Molecular Weight: Predicted, 120 kDa, observed, 160 kDa

Clonality: Rabbit monoclonal antibody

Clone ID: 24GB1145

Species Reactivity: Human, mouse, rat

Applications Tested: Western blotting (WB), flow cytometry (FCM), immunocytochemistry (IC)

## Immunogen

A synthesized peptide derived from human PELP1

## Isotype

Rabbit IgG

## Storage Buffer

Supplied in PBS (pH 7.4) containing 50% glycerol, and 0.02% sodium azide.

## Storage

Store at -20 °C for one year.

## Recommended Dilutions

Western Blotting (WB): 1:1,000-1:5,000

Flow Cytometry (FCM): 1:2,000

Immunocytochemistry (IC): 1:100-1:1,000

---

### SUPPORT

SUPPORT@GENUINBIOTECH.COM  
TEL: +1-540-855-7041

### ORDERS

SALES@GENUINBIOTECH.COM  
FAX: +1-540-855-7041

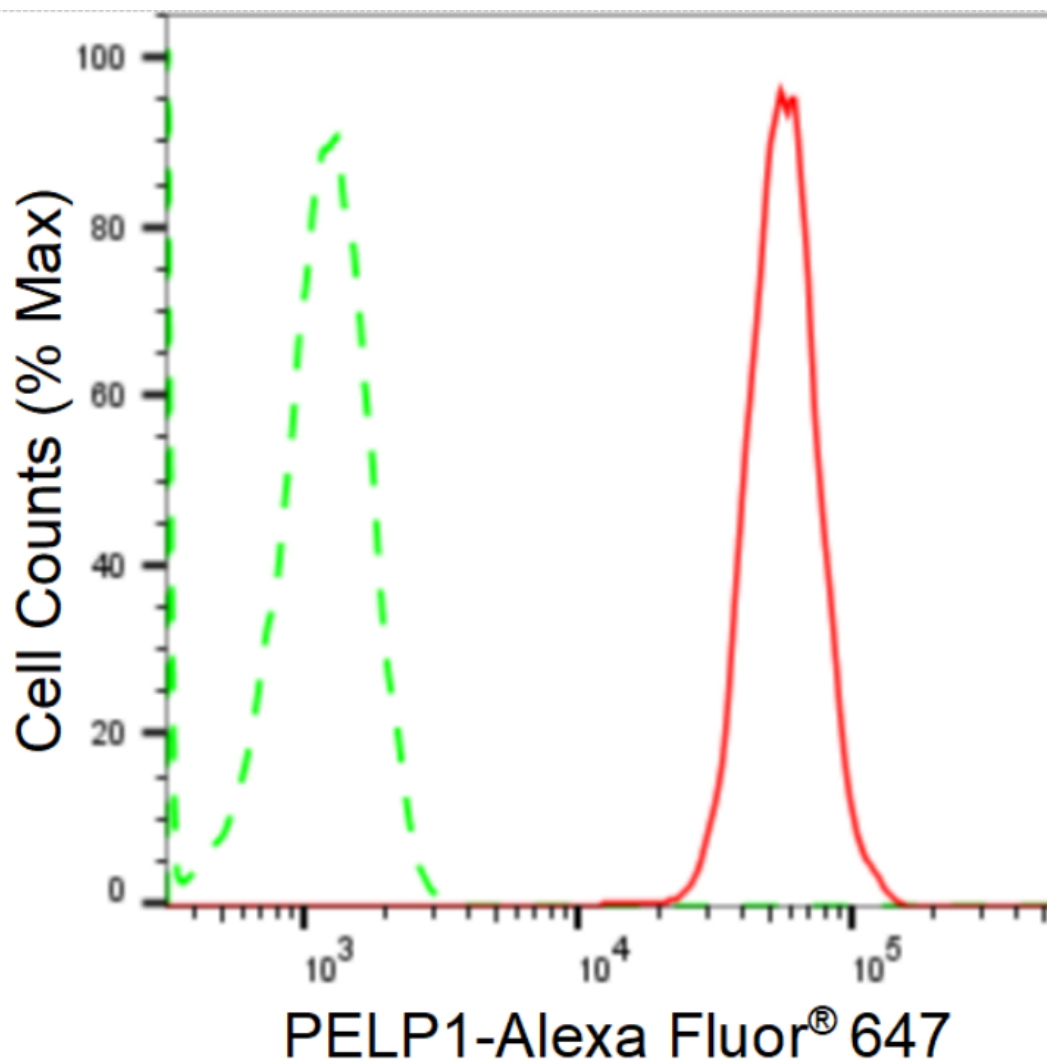
[WWW.GENUINBIOTECH.COM](http://WWW.GENUINBIOTECH.COM)

# KD-Validated Anti-PELP1 Recombinant Rabbit Monoclonal Antibody

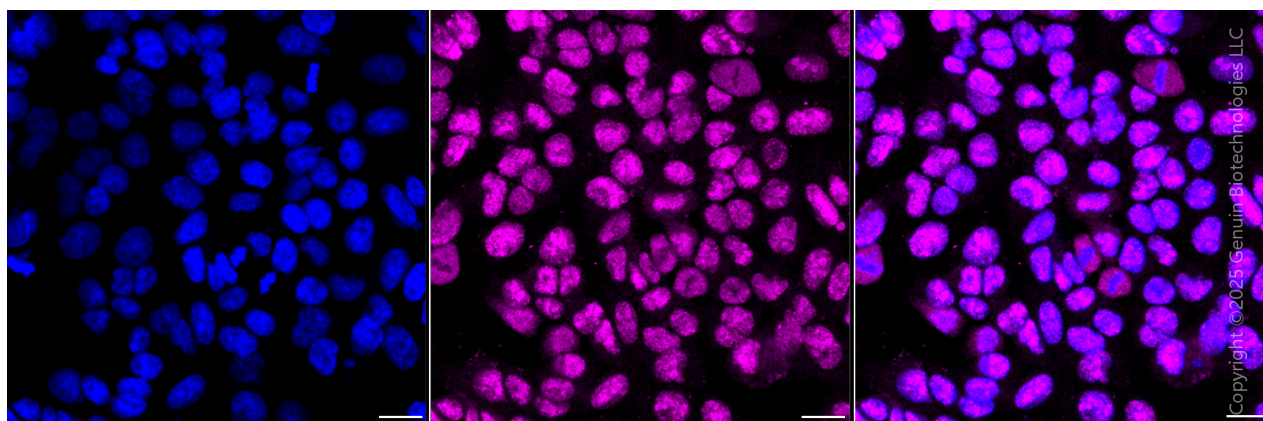
PAGE 2

**Note:** This product is for research use only.

## Validation Data



Flow cytometric analysis of PELP1 expression in HAP-1 cells using anti-PELP1 antibody (Cat#62501, 1:2,000). Green, isotype control; red, PELP1.



### SUPPORT

SUPPORT@GENUINBIOTECH.COM  
TEL: +1-540-855-7041

### ORDERS

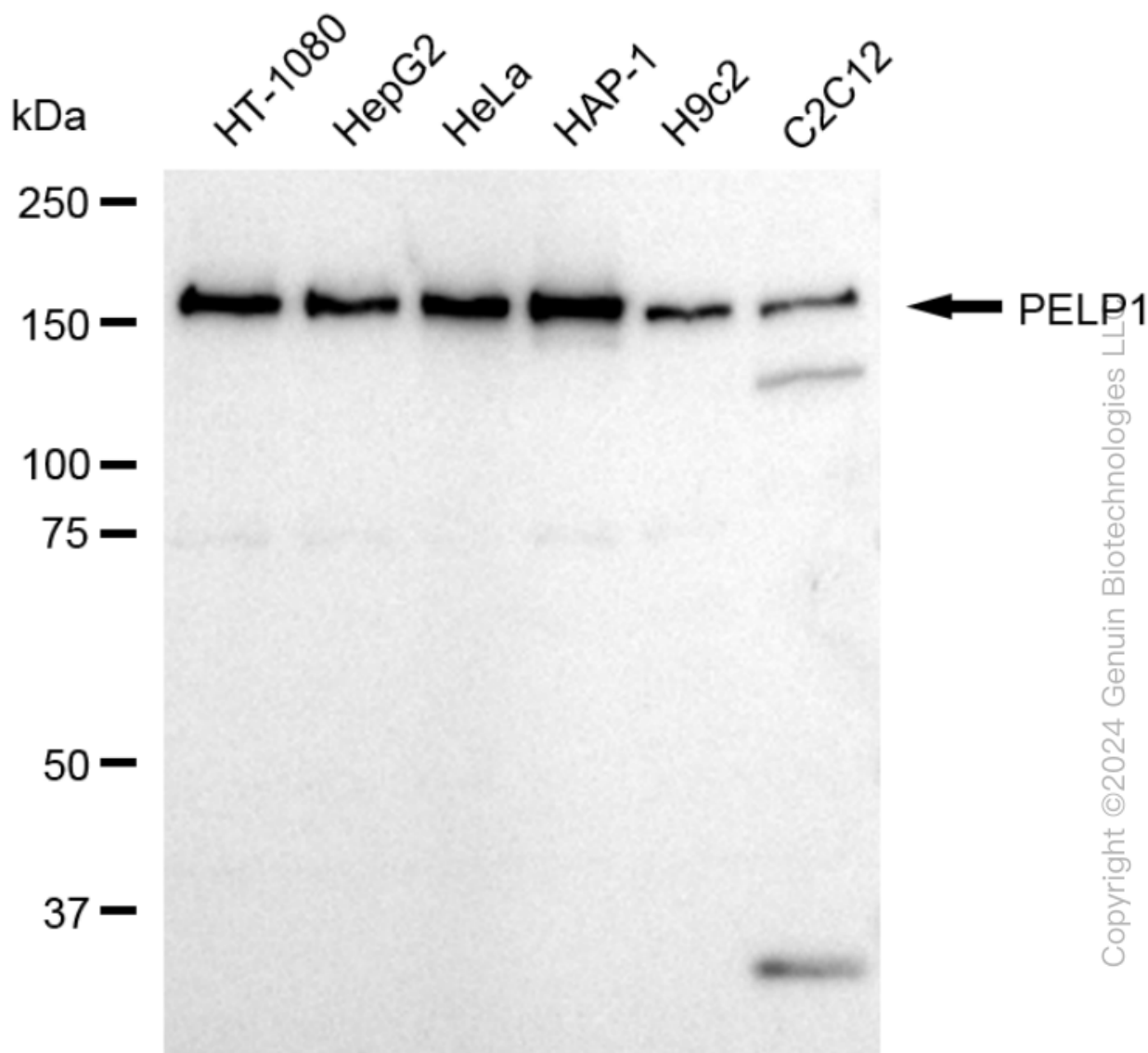
SALES@GENUINBIOTECH.COM  
FAX: +1-540-855-7041

WWW.GENUINBIOTECH.COM

## KD-Validated Anti-PELP1 Recombinant Rabbit Monoclonal Antibody

PAGE 3

Immunocytochemical staining of HAP1 cells with anti-PELP1 antibody (Cat#62501, 1:1,000). Nuclei were stained blue with DAPI; PELP1 was stained magenta with Alexa Fluor® 647. Images were taken using Leica stellaris 5. Protein abundance based on laser Intensity and smart gain: Medium. Scale bar, 20 µm.



Western blotting analysis using anti-PELP1 antibody (Cat#62501). Total cell lysates (30 µg) from various cell lines were loaded and separated by SDS-PAGE. The blot was incubated with anti-PELP1 antibody (Cat#62501, 1:5,000) and HRP-conjugated goat anti-rabbit secondary antibody (Cat#201, 1:20,000) respectively. Image was developed using FeQ™ ECL Substrate Kit (Cat#226).

### SUPPORT

SUPPORT@GENUINBIOTECH.COM  
TEL: +1-540-855-7041

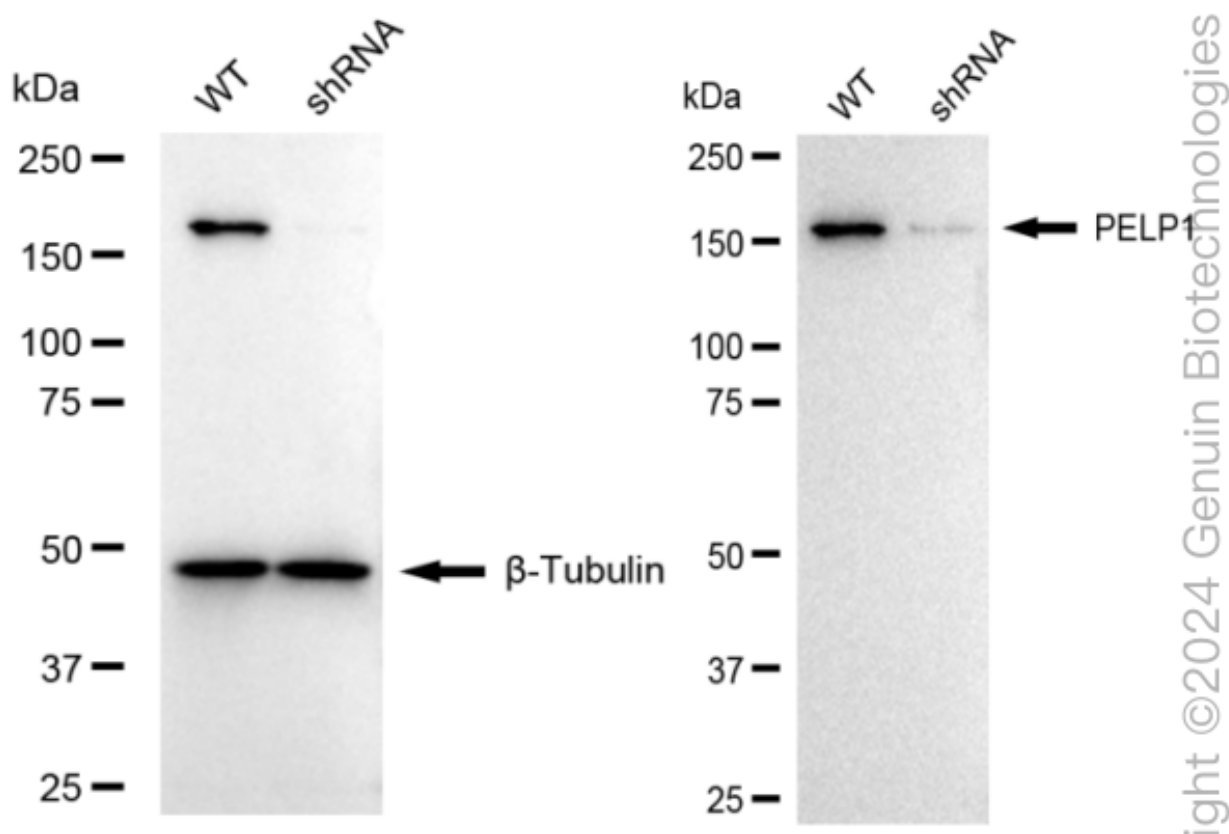
### ORDERS

SALES@GENUINBIOTECH.COM  
FAX: +1-540-855-7041

WWW.GENUINBIOTECH.COM

## KD-Validated Anti-PELP1 Recombinant Rabbit Monoclonal Antibody

PAGE 4



Western blotting analysis using anti-PELP1 antibody (Cat#62501). PELP1 expression in wild type (WT) and PELP1 shRNA knockdown (KD) HeLa cells with 20 µg of total cell lysates. β-Tubulin serves as a loading control. The blot was incubated with anti-PELP1 antibody (Cat#62501, 1:5,000) and HRP-conjugated goat anti-rabbit secondary antibody (Cat#201, 1:20,000) respectively. Image was developed using NaQ™ ECL Substrate Kit (Cat#716).

### SUPPORT

SUPPORT@GENUINBIOTECH.COM  
TEL: +1-540-855-7041

### ORDERS

SALES@GENUINBIOTECH.COM  
FAX: +1-540-855-7041

[WWW.GENUINBIOTECH.COM](http://WWW.GENUINBIOTECH.COM)