

# KD-Validated Anti-Pyruvate Dehydrogenase Kinase 1 Recombinant Rabbit Monoclonal



**Catalog #: 62511**

## Aliases

Pyruvate Dehydrogenase Kinase 1; [Pyruvate Dehydrogenase (Acetyl-Transferring)] Kinase Isozyme 1, Mitochondrial; Pyruvate Dehydrogenase Kinase, Isoenzyme 1; PDH Kinase 1; EC 2.7.11.2; Pyruvate Dehydrogenase (Acetyl-Transferring) Kinase Isozyme 1, Mitochondrial; Mitochondrial Pyruvate Dehydrogenase, Lipoamide, Kinase Isoenzyme 1; Pyruvate Dehydrogenase Kinase, Isozyme 1; Pyruvate Dehydrogenase Kinase Isoform 1; EC 2.7.11; PDHK1

## Background

Gene Name: PDK1

NCBI Gene Entry: [5163](#)

UniProt Entry: [Q15118](#)

## Application Information

Molecular Weight: Predicted, 49 kDa, observed, 49 kDa

Clonality: Rabbit monoclonal antibody

Clone ID: 24GB1190

Species Reactivity: Human, mouse, rat

Applications Tested: Western blotting (WB), flow cytometry (FCM), immunocytochemistry (IC)

## Immunogen

A synthesized peptide derived from human PDK1

## Isotype

Rabbit IgG

## Storage Buffer

Supplied in PBS (pH 7.4) containing 50% glycerol, and 0.02% sodium azide.

## Storage

Store at -20 °C for one year.

## Recommended Dilutions

Western Blotting (WB): 1:1,000-1:5,000

Flow Cytometry (FCM): 1:2,000

Immunocytochemistry (IC): 1:100-1:1,000

---

### SUPPORT

SUPPORT@GENUINBIOTECH.COM  
TEL: +1-540-855-7041

### ORDERS

SALES@GENUINBIOTECH.COM  
FAX: +1-540-855-7041

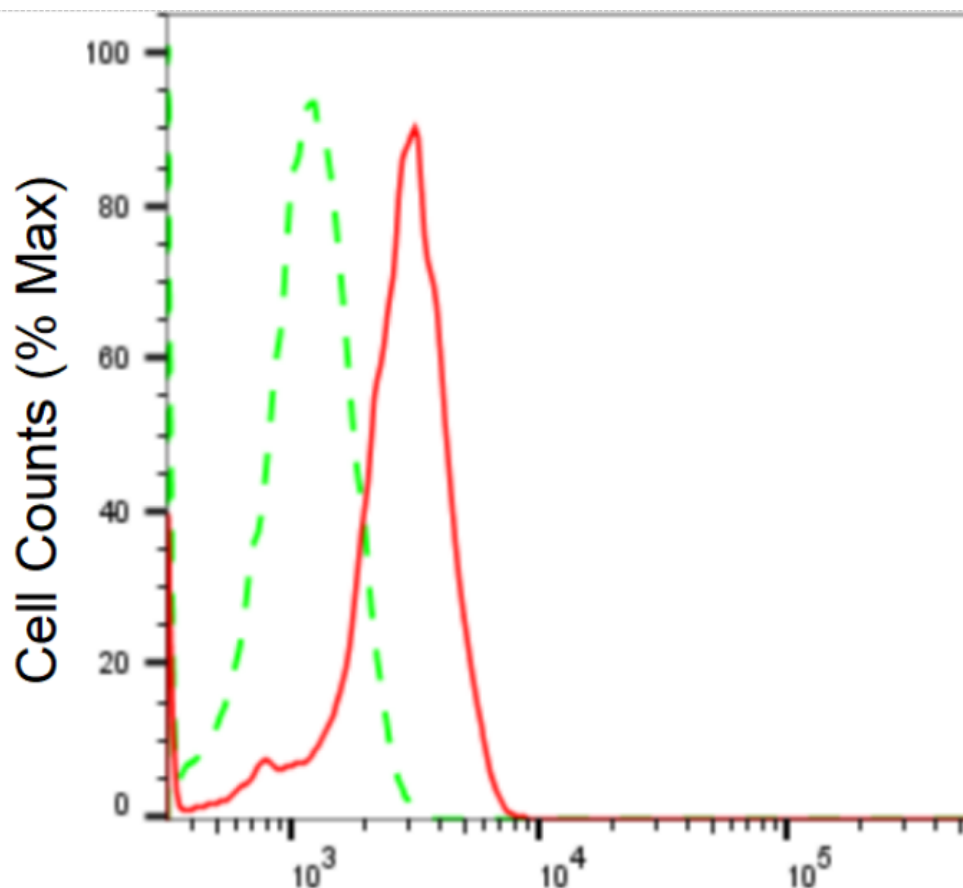
[WWW.GENUINBIOTECH.COM](http://WWW.GENUINBIOTECH.COM)

## KD-Validated Anti-Pyruvate Dehydrogenase Kinase 1 Recombinant Rabbit Monoclonal

PAGE 2

**Note:** This product is for research use only.

### Validation Data



Copyright ©2024 Genuin Biotechnologies LLC

### Pyruvate dehydrogenase kinase 1-Alexa Fluor® 647

Flow cytometric analysis of Pyruvate dehydrogenase kinase 1 expression in H9c2 cells using anti-Pyruvate dehydrogenase kinase 1 antibody (Cat#62511, 1:2,000). Green, isotype control; red, Pyruvate dehydrogenase kinase 1.

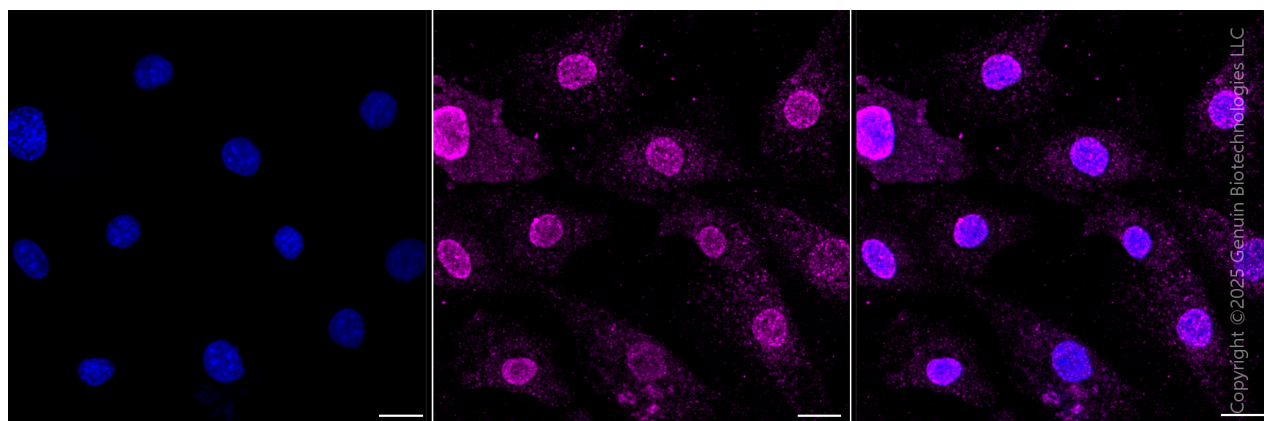
#### SUPPORT

SUPPORT@GENUINBIOTECH.COM  
TEL: +1-540-855-7041

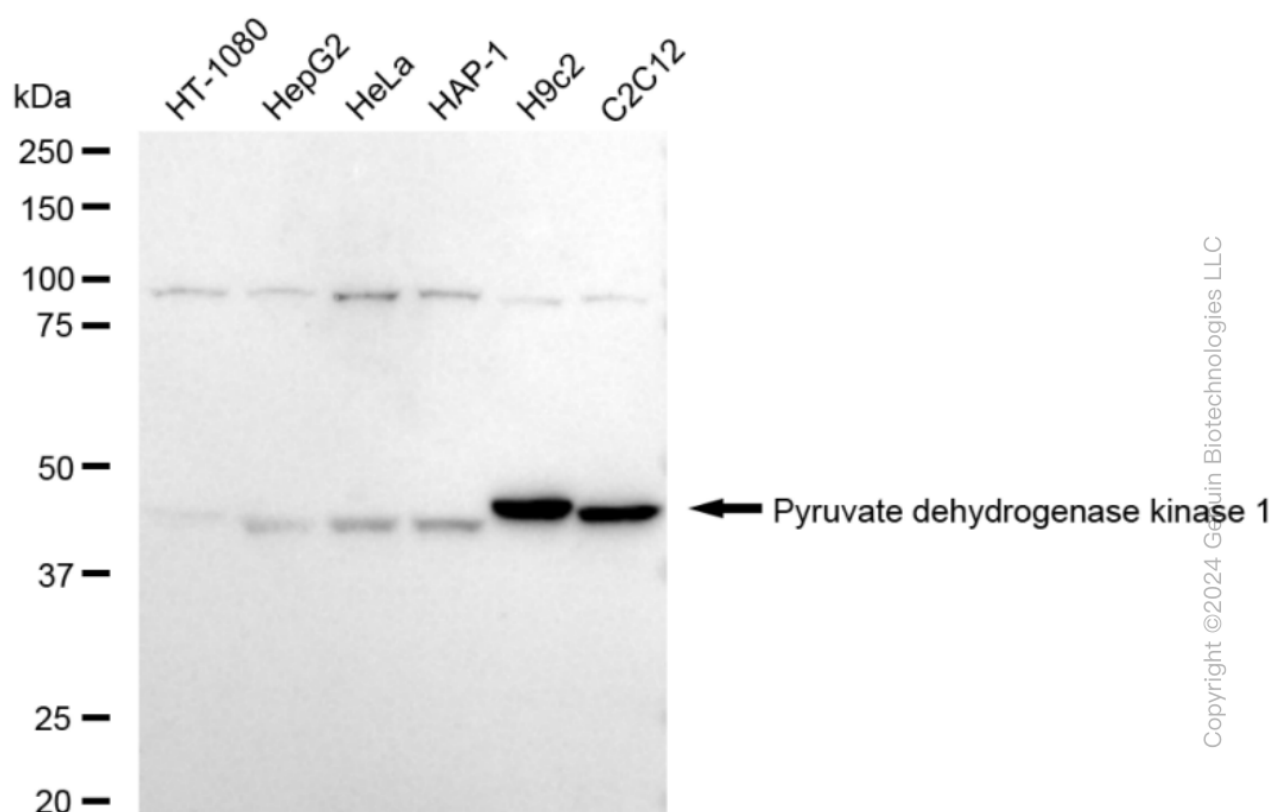
#### ORDERS

SALES@GENUINBIOTECH.COM  
FAX: +1-540-855-7041

[WWW.GENUINBIOTECH.COM](http://WWW.GENUINBIOTECH.COM)



Immunocytochemical staining of H9C2 cells with anti-Pyruvate dehydrogenase kinase 1 antibody (Cat#62511, 1:1,000). Nuclei were stained blue with DAPI; Pyruvate dehydrogenase kinase 1 was stained magenta with Alexa Fluor® 647. Images were taken using Leica stellaris 5. Protein abundance based on laser Intensity and smart gain □ Medium. Scale bar, 20 μm.



Western blotting analysis using anti-Pyruvate dehydrogenase kinase 1 antibody (Cat#62511). Total cell lysates (30 μg) from various cell lines were loaded and separated by SDS-PAGE. The blot was incubated with anti-Pyruvate dehydrogenase kinase 1 antibody (Cat#62511, 1:5,000) and HRP-conjugated goat anti-rabbit secondary antibody (Cat#201, 1:20,000) respectively. Image was developed using FeQ™ ECL Substrate Kit (Cat#226).

## SUPPORT

SUPPORT@GENUINBIOTECH.COM  
TEL: +1-540-855-7041

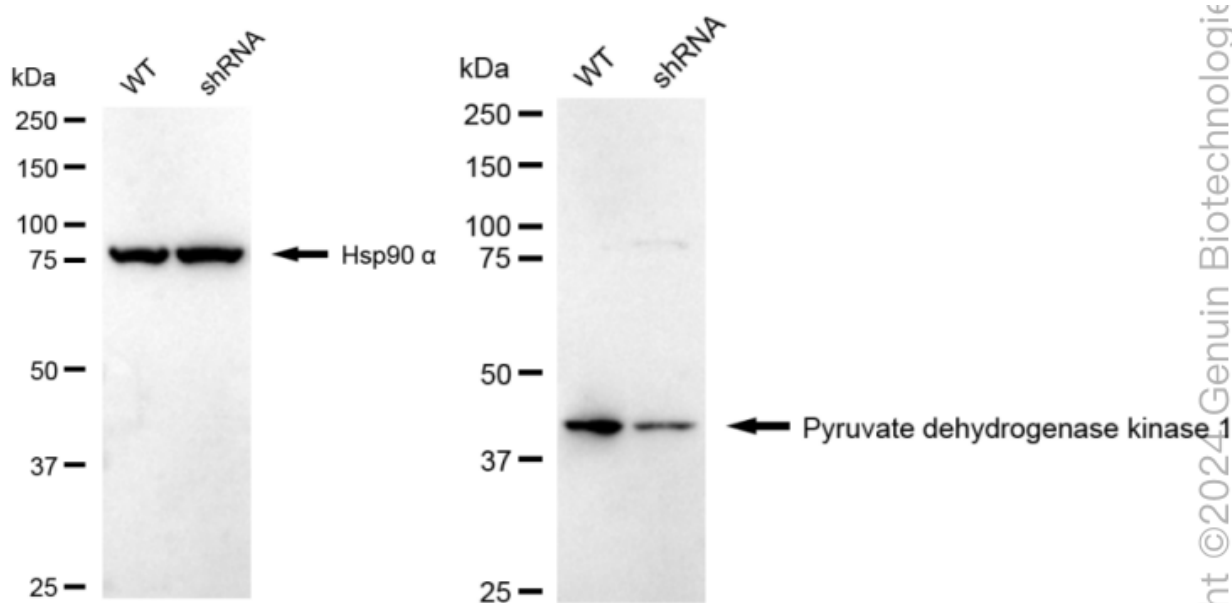
## ORDERS

SALES@GENUINBIOTECH.COM  
FAX: +1-540-855-7041

[WWW.GENUINBIOTECH.COM](http://WWW.GENUINBIOTECH.COM)

## KD-Validated Anti-Pyruvate Dehydrogenase Kinase 1 Recombinant Rabbit Monoclonal

PAGE 4



Western blotting analysis using anti-Pyruvate dehydrogenase kinase 1 antibody (Cat#62511). Pyruvate dehydrogenase kinase 1 expression in wild type (WT) and Pyruvate dehydrogenase kinase 1 shRNA knockdown (KD) HT-1080 cells with 20 µg of total cell lysates. Hsp90 α serves as a loading control. The blot was incubated with anti-Pyruvate dehydrogenase kinase 1 antibody (Cat#62511, 1:5,000) and HRP-conjugated goat anti-rabbit secondary antibody (Cat#201, 1:20,000) respectively. Image was developed using NaQ™ ECL Substrate Kit (Cat#716).

### SUPPORT

SUPPORT@GENUINBIOTECH.COM  
TEL: +1-540-855-7041

### ORDERS

SALES@GENUINBIOTECH.COM  
FAX: +1-540-855-7041

[WWW.GENUINBIOTECH.COM](http://WWW.GENUINBIOTECH.COM)