

KD-Validated Anti-DNAJC12 Recombinant Rabbit Monoclonal Antibody



Catalog #: 62514

Aliases

DNAJC12; DnaJ Heat Shock Protein Family (Hsp40) Member C12; JDP1; DnaJ (Hsp40) Homolog, Subfamily C, Member 12; DnaJ Homolog Subfamily C Member 12; J Domain-Containing Protein; J Domain Protein; J Domain Containing Protein 1 (JDP1); HPANBH4

Background

Gene Name: DNAJC12

NCBI Gene Entry: [56521](#)

UniProt Entry: [Q9UKB3](#)

Application Information

Molecular Weight: Predicted, 23 kDa, observed, 23 kDa

Clonality: Rabbit monoclonal antibody

Clone ID: 23GB1815

Species Reactivity: Human

Applications Tested: Western blotting (WB), flow cytometry (FCM), immunocytochemistry (IC)

Immunogen

A synthesized peptide derived from human DNAJC12

Isotype

Rabbit IgG

Storage Buffer

Supplied in PBS (pH 7.4) containing 50% glycerol, and 0.02% sodium azide.

Storage

Store at -20 °C for one year.

Recommended Dilutions

Western Blotting (WB): 1:1,000-1:5,000

Flow Cytometry (FCM): 1:2,000

Immunocytochemistry (IC): 1:100-1:1,000

Note: This product is for research use only.

SUPPORT

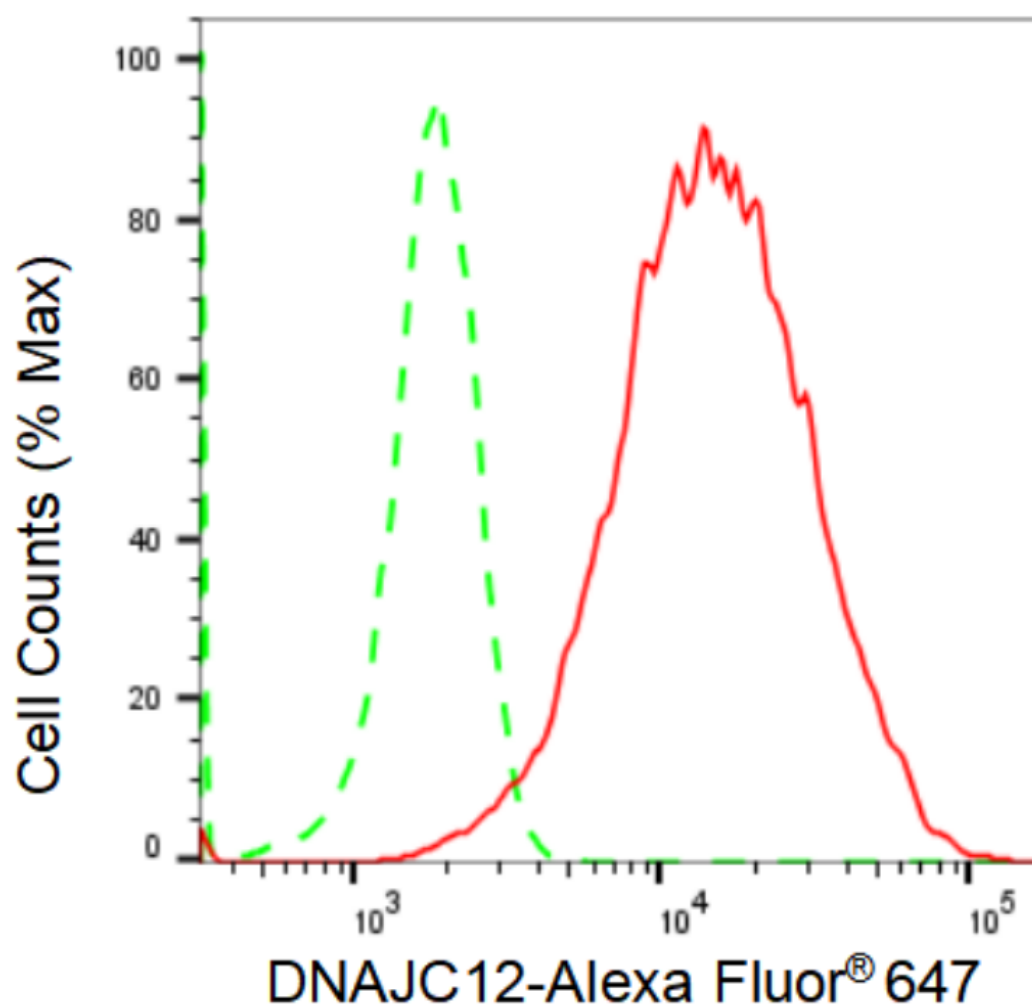
SUPPORT@GENUINBIOTECH.COM
TEL: +1-540-855-7041

ORDERS

SALES@GENUINBIOTECH.COM
FAX: +1-540-855-7041

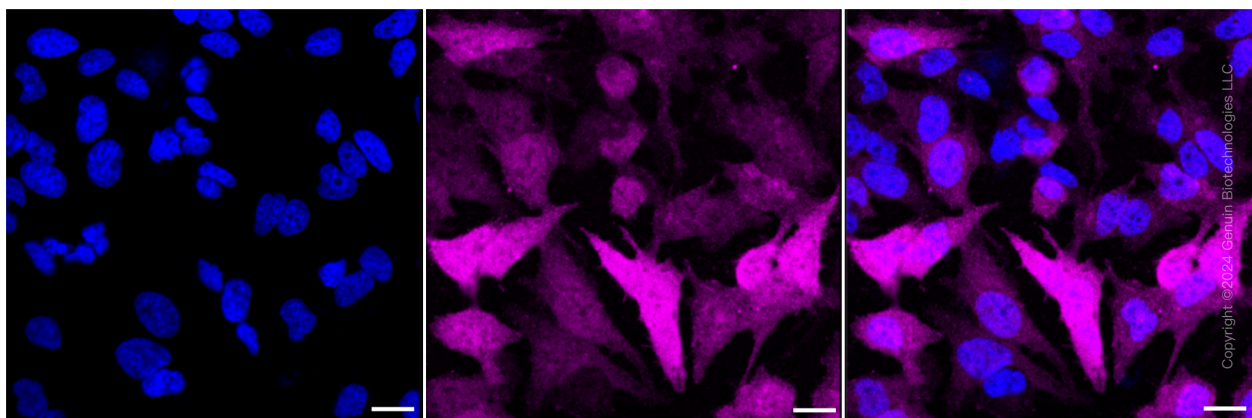
WWW.GENUINBIOTECH.COM

Validation Data



Copyright ©2024 Genuin Biotechnologies LLC

Flow cytometric analysis of DNAJC12 expression in HeLa cells using DNAJC12 antibody (Cat#62514, 1:2,000). Green, isotype control; red, DNAJC12.



Copyright ©2024 Genuin Biotechnologies LLC

Immunocytochemical staining of HeLa cells with DNAJC12 antibody (Cat#62514, 1:1,000).

SUPPORT

SUPPORT@GENUINBIOTECH.COM
TEL: +1-540-855-7041

ORDERS

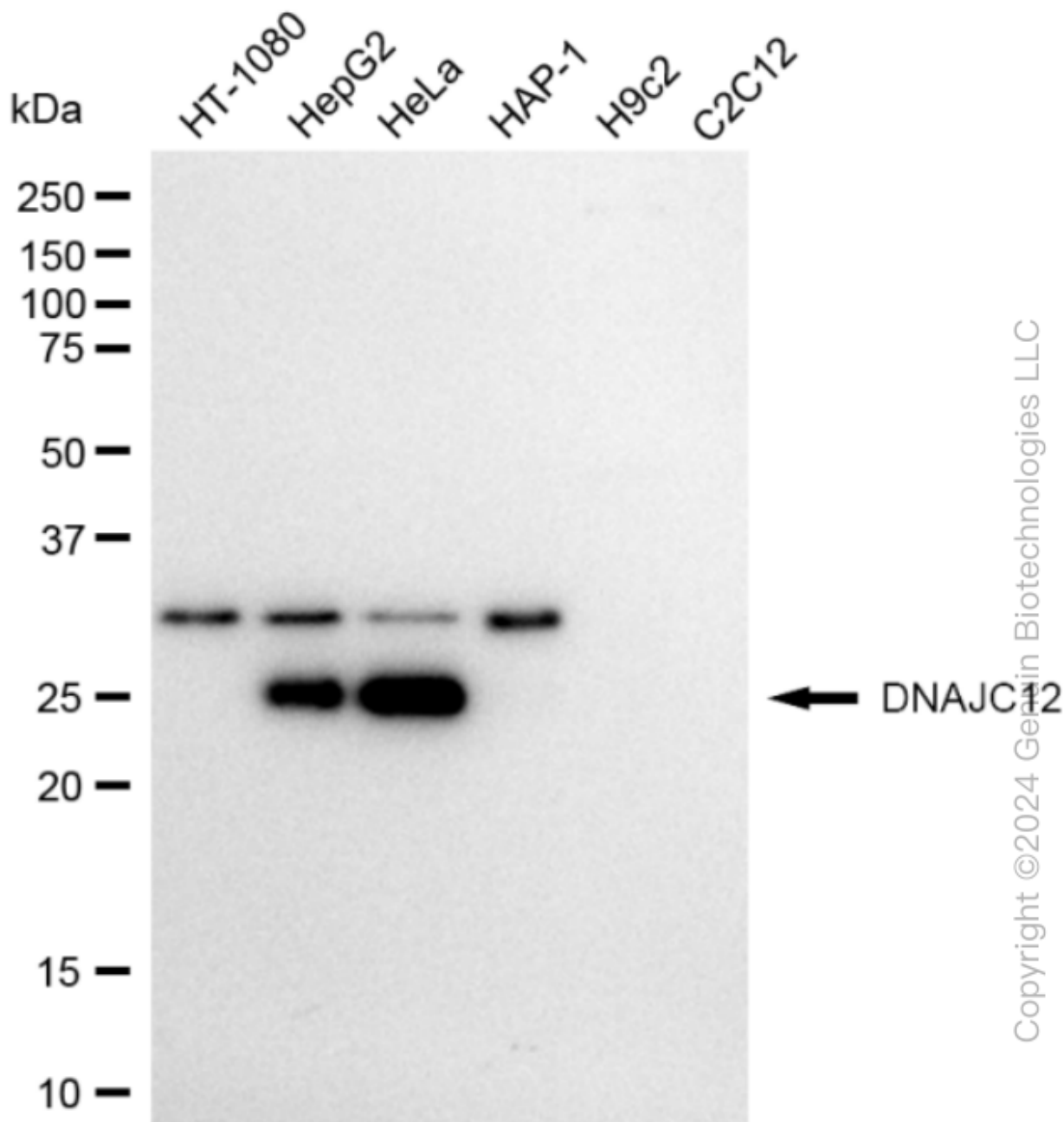
SALES@GENUINBIOTECH.COM
FAX: +1-540-855-7041

WWW.GENUINBIOTECH.COM

KD-Validated Anti-DNAJC12 Recombinant Rabbit Monoclonal Antibody

PAGE 3

Nuclei were stained blue with DAPI; DNAJC12 was stained magenta with Alexa Fluor® 647. Images were taken using Leica stellaris 5. Protein abundance based on laser Intensity and smart gain: Low. Scale bar: 20 µm.



Western blotting analysis using anti-DNAJC12 antibody (Cat#62514). Total cell lysates (30 µg) from various cell lines were loaded and separated by SDS-PAGE. The blot was incubated with anti-DNAJC12 antibody (Cat#62514, 1:5,000) and HRP-conjugated goat anti-rabbit secondary antibody (Cat#201, 1:20,000) respectively. Image was developed using FeQ™ ECL Substrate Kit (Cat#226). DNAJC12, DnaJ heat shock protein family (Hsp40) member C12.

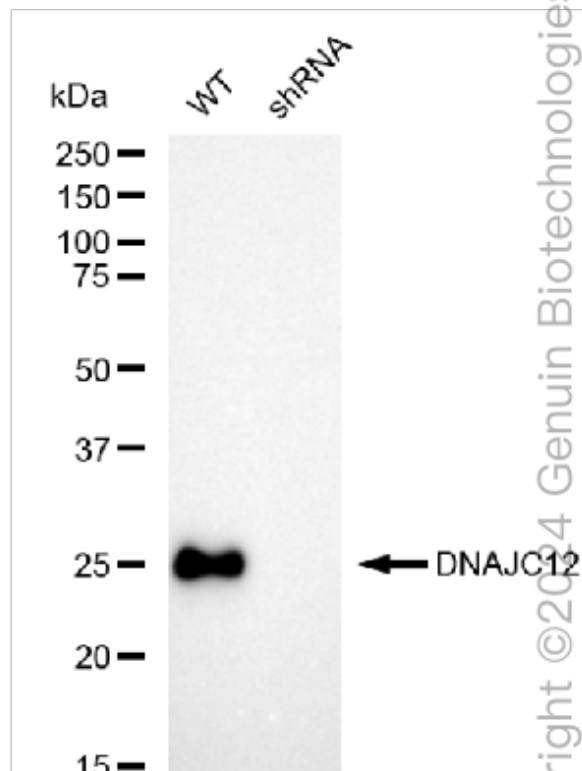
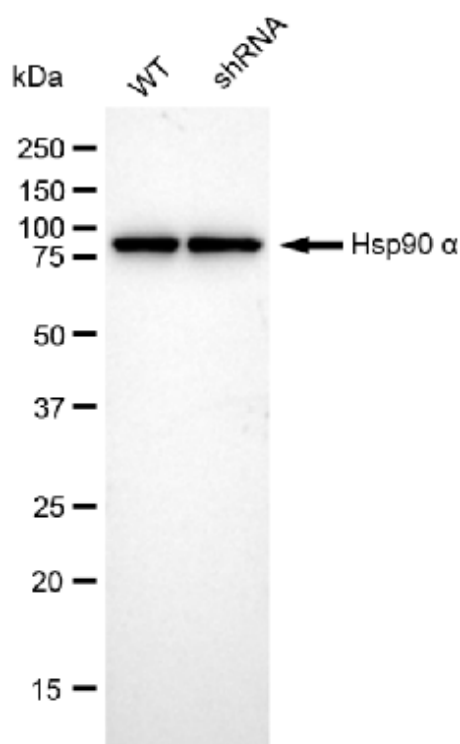
SUPPORT

SUPPORT@GENUINBIOTECH.COM
TEL: +1-540-855-7041

ORDERS

SALES@GENUINBIOTECH.COM
FAX: +1-540-855-7041

WWW.GENUINBIOTECH.COM



Western blotting analysis using anti-DNAJC12 antibody (Cat#62514). DNAJC12 expression in wild type (WT) and DNAJC12 shRNA knockdown (KD) HeLa cells with 30 µg of total cell lysates. β-Tubulin serves as a loading control. The blot was incubated with anti-DNAJC12 antibody (Cat#62514, 1:5,000) and HRP-conjugated goat anti-rabbit secondary antibody (Cat#201, 1:20,000) respectively. Image was developed using FeQ™ ECL Substrate Kit (Cat#226).