

KD-Validated Anti-PPP2R5E Recombinant Rabbit Monoclonal Antibody



Catalog #: 62517

Aliases

Protein Phosphatase 2 Regulatory Subunit B'Epsilon; B56epsilon; B56E; Serine/Threonine-Protein Phosphatase 2A 56 KDa Regulatory Subunit Epsilon Isoform; Serine/Threonine Protein Phosphatase 2A, 56 KDa Regulatory Subunit, Epsilon; Protein Phosphatase 2, Regulatory Subunit B (B56), Epsilon Isoform; Protein Phosphatase 2 Regulatory Subunit B', Epsilon; PP2A B Subunit Isoform PR61-Epsilon; PP2A B Subunit Isoform B56-Epsilon; PP2A B Subunit Isoform B'-Epsilon; PP2A B Subunit Isoform R5-Epsilon; PP2A, B Subunit, PR61 Epsilon; PP2A, B Subunit, B56 Epsilon; PP2A, B Subunit, B' Epsilon; PP2A, B Subunit, R5 Epsilon

Background

Gene Name: PPP2R5E

NCBI Gene Entry: [5529](#)

UniProt Entry: [Q16537](#)

Application Information

Molecular Weight: Predicted, 55 kDa, observed, 50 kDa

Clonality: Rabbit monoclonal antibody

Clone ID: 24GB1215

Species Reactivity: Human, mouse, rat

Applications Tested: Western blotting (WB), flow cytometry (FCM), immunocytochemistry (IC)

Immunogen

A synthesized peptide derived from human PPP2R5E

Isotype

Rabbit IgG

Storage Buffer

Supplied in PBS (pH 7.4) containing 50% glycerol, and 0.02% sodium azide.

Storage

Store at -20 °C for one year.

Recommended Dilutions

Western Blotting (WB): 1:1,000-1:5,000

Flow Cytometry (FCM): 1:2,000

SUPPORT

SUPPORT@GENUINBIOTECH.COM
TEL: +1-540-855-7041

ORDERS

SALES@GENUINBIOTECH.COM
FAX: +1-540-855-7041

WWW.GENUINBIOTECH.COM

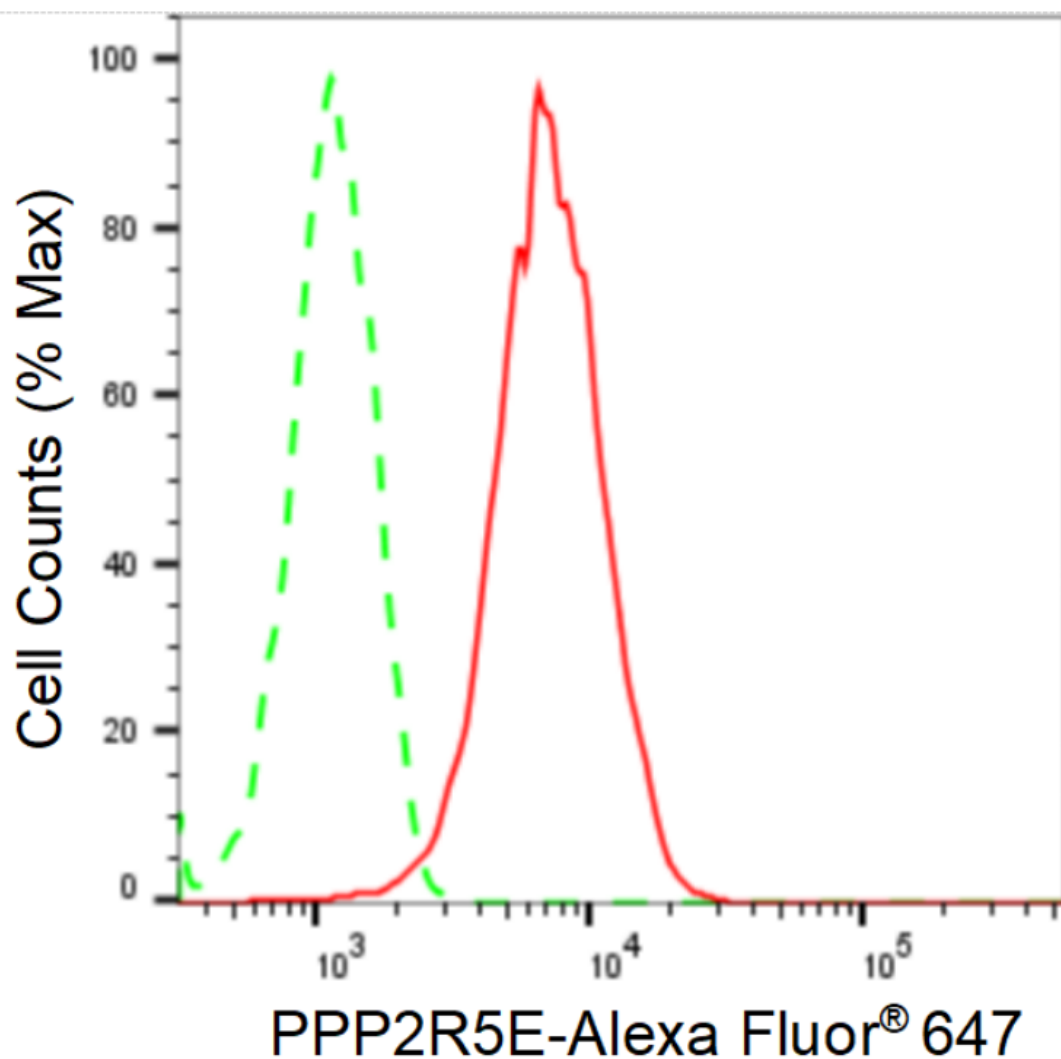
KD-Validated Anti-PPP2R5E Recombinant Rabbit Monoclonal Antibody

PAGE 2

Immunocytochemistry (IC): 1:100-1:1,000

Note: This product is for research use only.

Validation Data



Copyright ©2024 Genuin Biotechnologies LLC

Flow cytometric analysis of PPP2R5E expression in HepG2 cells using anti-PPP2R5E antibody (Cat#62517, 1:2,000). Green, isotype control; red, PPP2R5E.

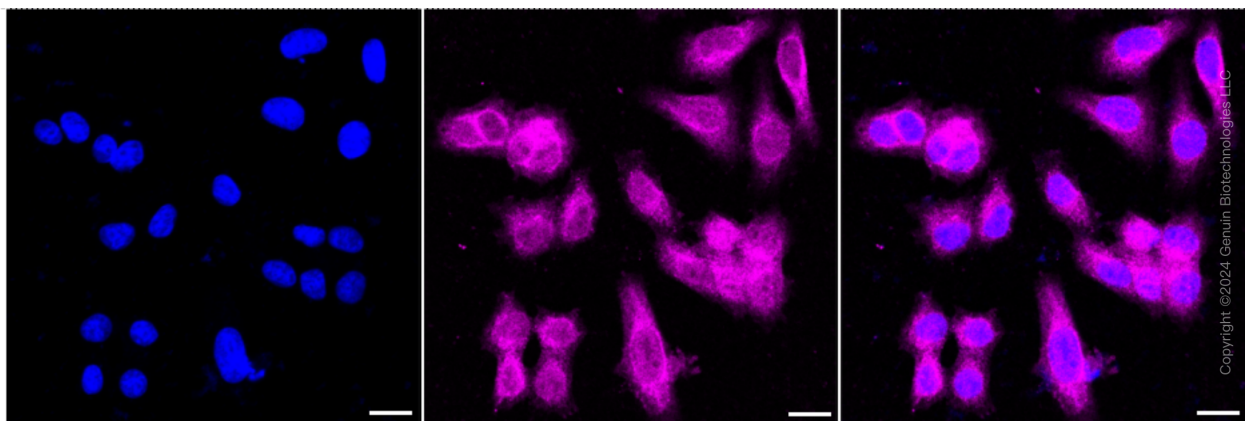
SUPPORT

SUPPORT@GENUINBIOTECH.COM
TEL: +1-540-855-7041

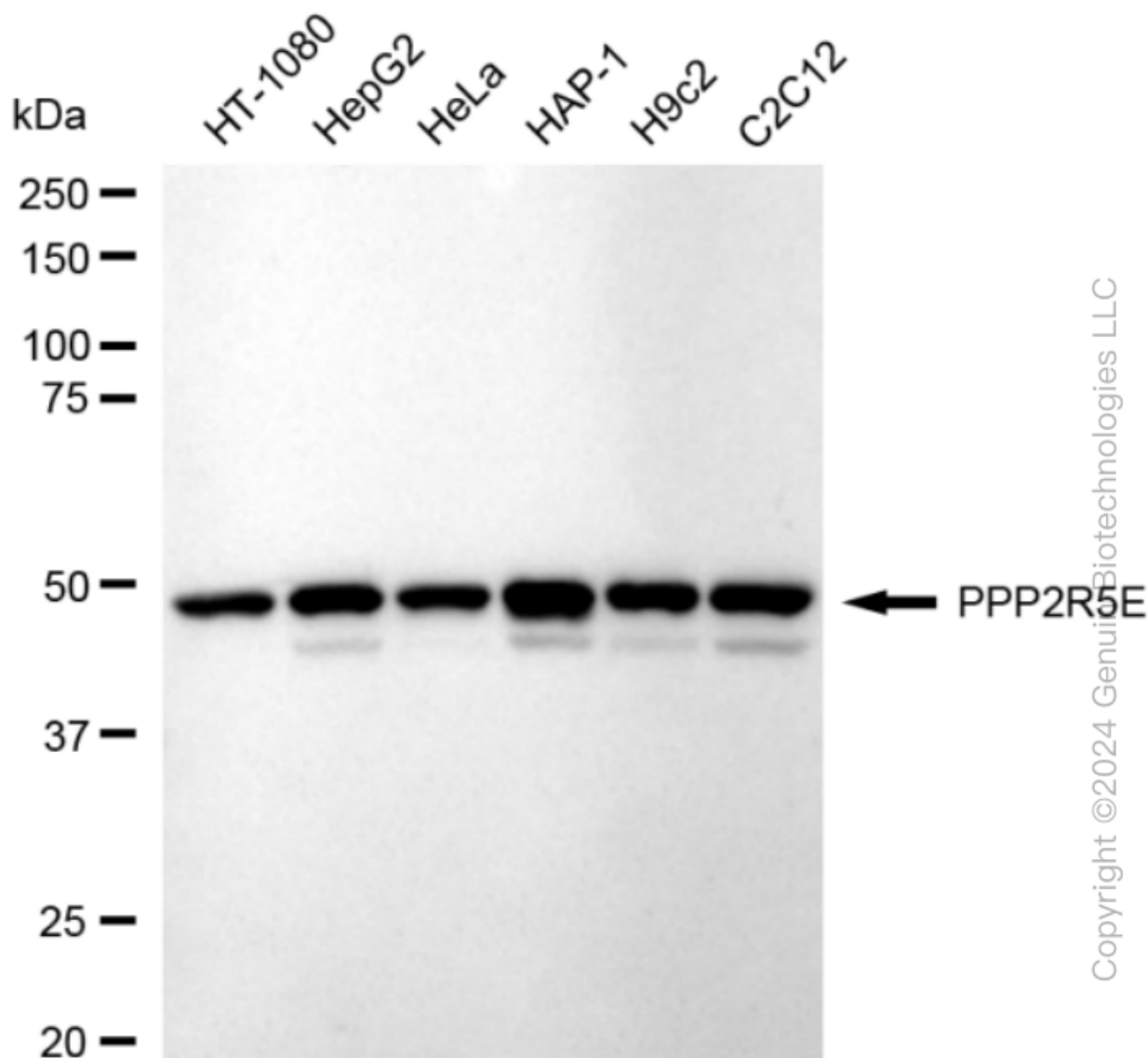
ORDERS

SALES@GENUINBIOTECH.COM
FAX: +1-540-855-7041

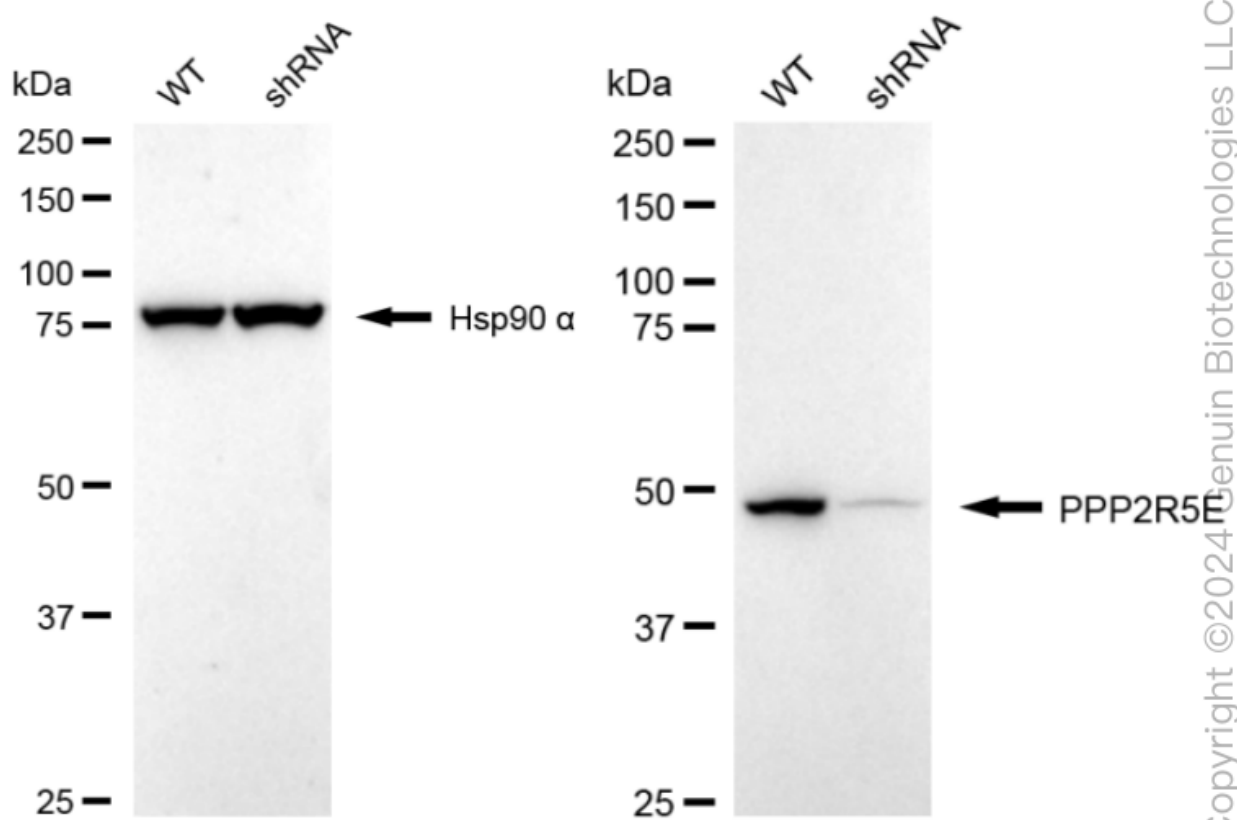
WWW.GENUINBIOTECH.COM



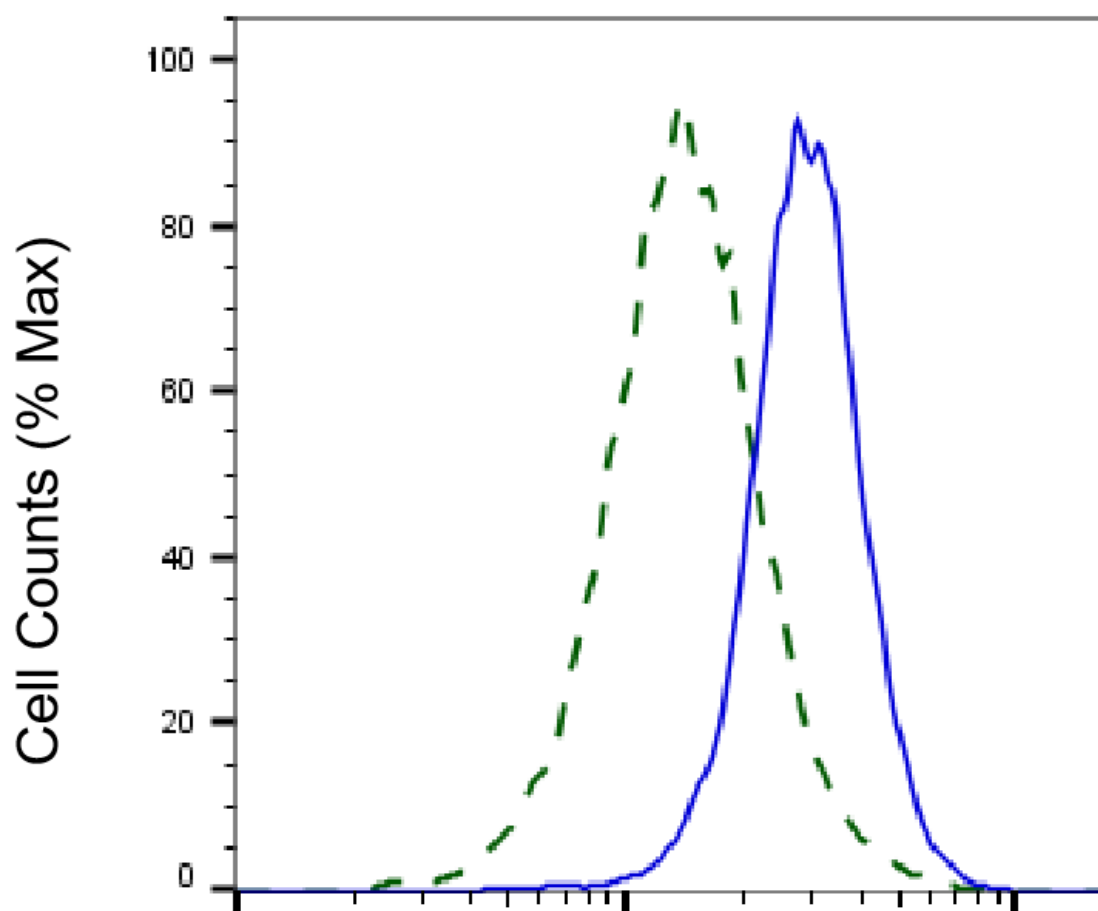
Immunocytochemical staining of HepG2 cells with anti-PPP2R5E antibody (Cat#62517, 1:1,000). Nuclei were stained blue with DAPI; PPP2R5E was stained magenta with Alexa Fluor® 647. Images were taken using Leica stellaris 5. Protein abundance based on laser Intensity and smart gain: Medium. Scale bar: 20 μ m.



Western blotting analysis using anti-PPP2R5E antibody (Cat#62517). Total cell lysates (30 µg) from various cell lines were loaded and separated by SDS-PAGE. The blot was incubated with anti-PPP2R5E antibody (Cat#62517, 1:5,000) and HRP-conjugated goat anti-rabbit secondary antibody (Cat#201, 1:20,000) respectively. Image was developed using FeQ™ ECL Substrate Kit (Cat#226)



Western blotting analysis using anti-PPP2R5E antibody (Cat#62517). PPP2R5E expression in wild type (WT) and PPP2R5E shRNA knockdown (KD) HeLa cells with 20 µg of total cell lysates. Hsp90 α serves as a loading control. The blot was incubated with anti-PPP2R5E antibody (Cat#62517, 1:5,000) and HRP-conjugated goat anti-rabbit secondary antibody (Cat#201, 1:20,000) respectively. Image was developed using NaQ™ ECL Substrate Kit (Cat#716).



Copyright ©2025 Genuin Biotechnologies LLC

PPP2R5E-Alexa Fluor® 647

Validation of PPP2R5E knockdown using flow cytometry. Wild-type(WT, Blue) and knockdown(KD, Green) HeLa cells were stained with anti-PPP2R5E antibody (Cat#62517, 1:2,000) and analyzed using BD flow cytometer.