

# KD-Validated Anti-SFPQ Recombinant Rabbit Monoclonal Antibody



**Catalog #: 62518**

## Aliases

Splicing Factor Proline And Glutamine Rich; PSF; PPP1R140; Polypyrimidine Tract Binding Protein Associated; Protein Phosphatase 1, Regulatory Subunit 140; DNA-Binding P52/P100 Complex, 100 KDa Subunit; Splicing Factor, Proline- And Glutamine-Rich; Splicing Factor Proline/Glutamine-Rich; 100 KDa DNA-Pairing Protein; Splicing Factor Proline/Glutamine Rich (Polypyrimidine Tract-Binding Protein-Associated); Splicing Factor Proline/Glutamine Rich (Polypyrimidine Tract Binding Protein Associated); Polypyrimidine Tract-Binding Protein-Associated Splicing Factor; Polypyrimidine Tract-Binding Protein-Associated-Splicing Factor; Epididymis Secretory Sperm Binding Protein; PTB-Associated Splicing Factor; PTB-Associated-Splicing Factor; HPOMp100; POMP100

## Background

Gene Name: SFPQ

NCBI Gene Entry: [6421](#)

UniProt Entry: [P23246](#)

## Application Information

Molecular Weight: Predicted, 76 kDa, observed, 100 kDa

Clonality: Rabbit monoclonal antibody

Clone ID: 24GB1220

Species Reactivity: Human, mouse, rat

Applications Tested: Western blotting (WB), flow cytometry (FCM), immunocytochemistry (IC)

## Immunogen

A synthesized peptide derived from human SFPQ

## Isotype

Rabbit IgG

## Storage Buffer

Supplied in PBS (pH 7.4) containing 50% glycerol, and 0.02% sodium azide.

## Storage

Store at -20 °C for one year.

## Recommended Dilutions

---

### SUPPORT

SUPPORT@GENUINBIOTECH.COM  
TEL: +1-540-855-7041

### ORDERS

SALES@GENUINBIOTECH.COM  
FAX: +1-540-855-7041

[WWW.GENUINBIOTECH.COM](http://WWW.GENUINBIOTECH.COM)

## KD-Validated Anti-SFPQ Recombinant Rabbit Monoclonal Antibody

PAGE 2

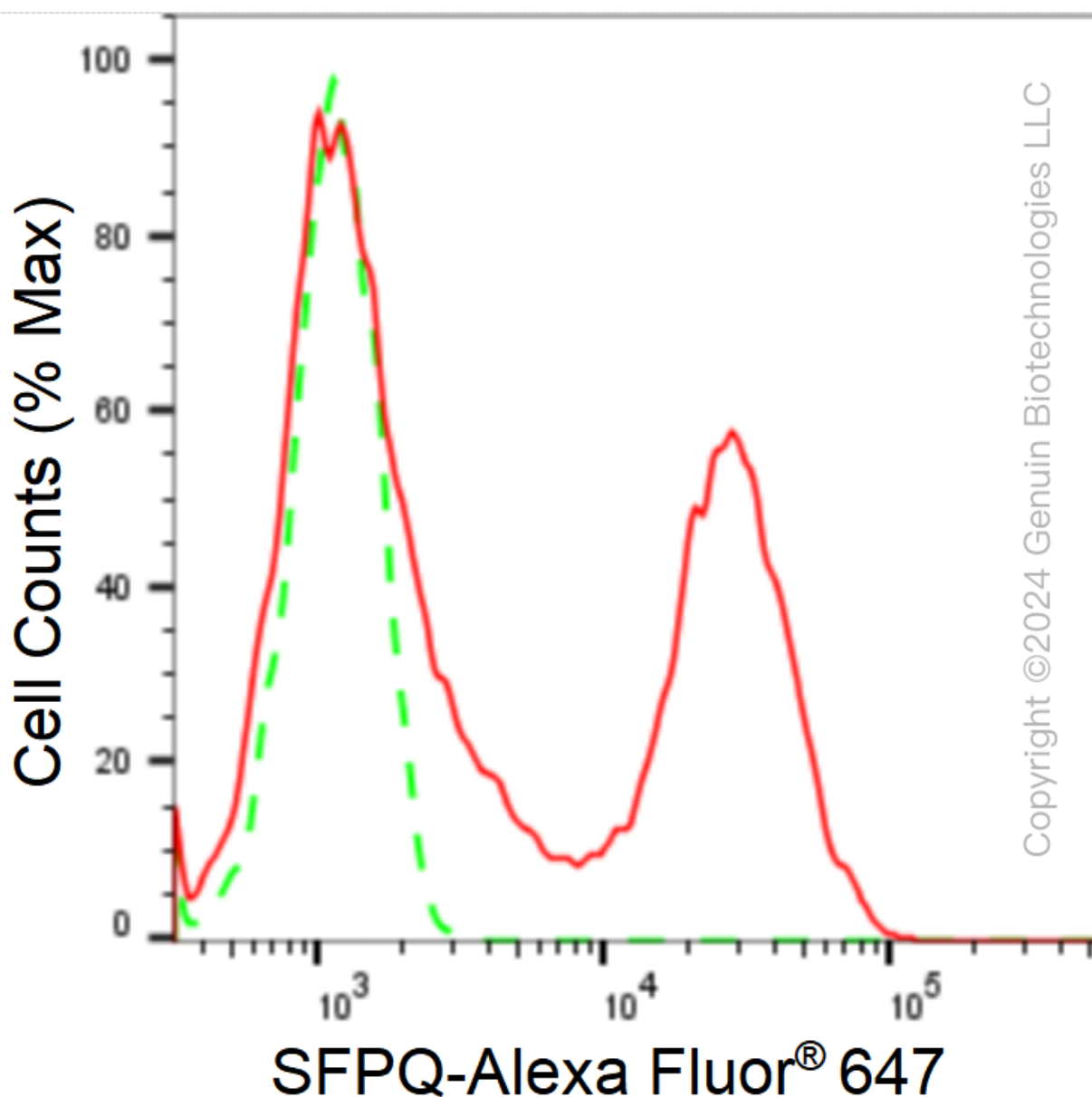
Western Blotting (WB): 1:1,000-1:5,000

Flow Cytometry (FCM): 1:2,000

Immunocytochemistry (IC): 1:100-1:1,000

**Note:** This product is for research use only.

### Validation Data



Flow cytometric analysis of SFPQ expression in HepG2 cells using anti-SFPQ antibody (Cat#62518, 1:2,000). Green, isotype control; red, SFPQ.

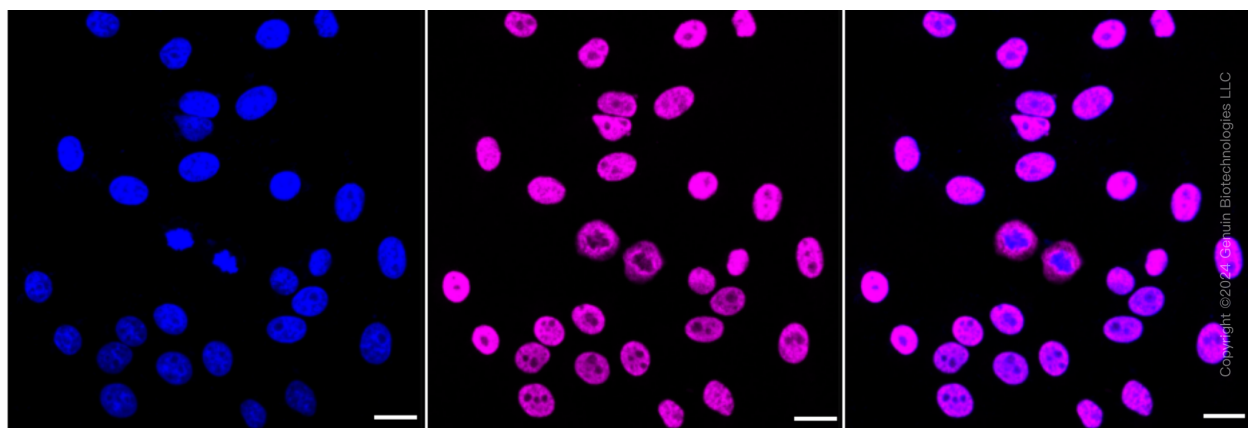
#### SUPPORT

SUPPORT@GENUINBIOTECH.COM  
TEL: +1-540-855-7041

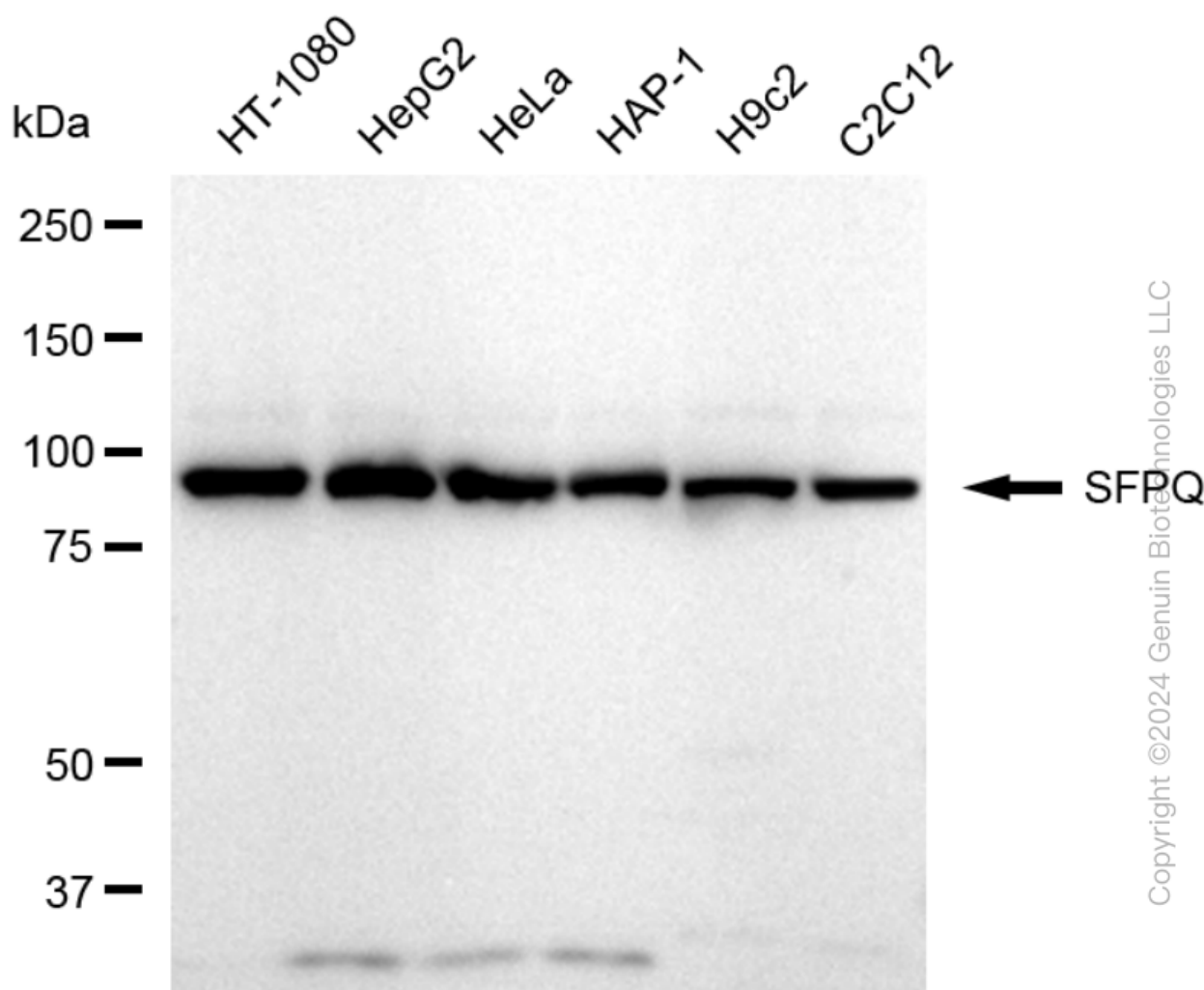
#### ORDERS

SALES@GENUINBIOTECH.COM  
FAX: +1-540-855-7041

[WWW.GENUINBIOTECH.COM](http://WWW.GENUINBIOTECH.COM)



Immunocytochemical staining of HepG2 cells with anti-SFPQ antibody (Cat#62518, 1:1,000). Nuclei were stained blue with DAPI; SFPQ was stained magenta with Alexa Fluor® 647. Images were taken using Leica stellaris 5. Protein abundance based on laser Intensity and smart gain: High. Scale bar: 20 µm.



Western blotting analysis using anti-SFPQ antibody (Cat#62518). Total cell lysates (30 µg) from

## SUPPORT

SUPPORT@GENUINBIOTECH.COM  
TEL: +1-540-855-7041

## ORDERS

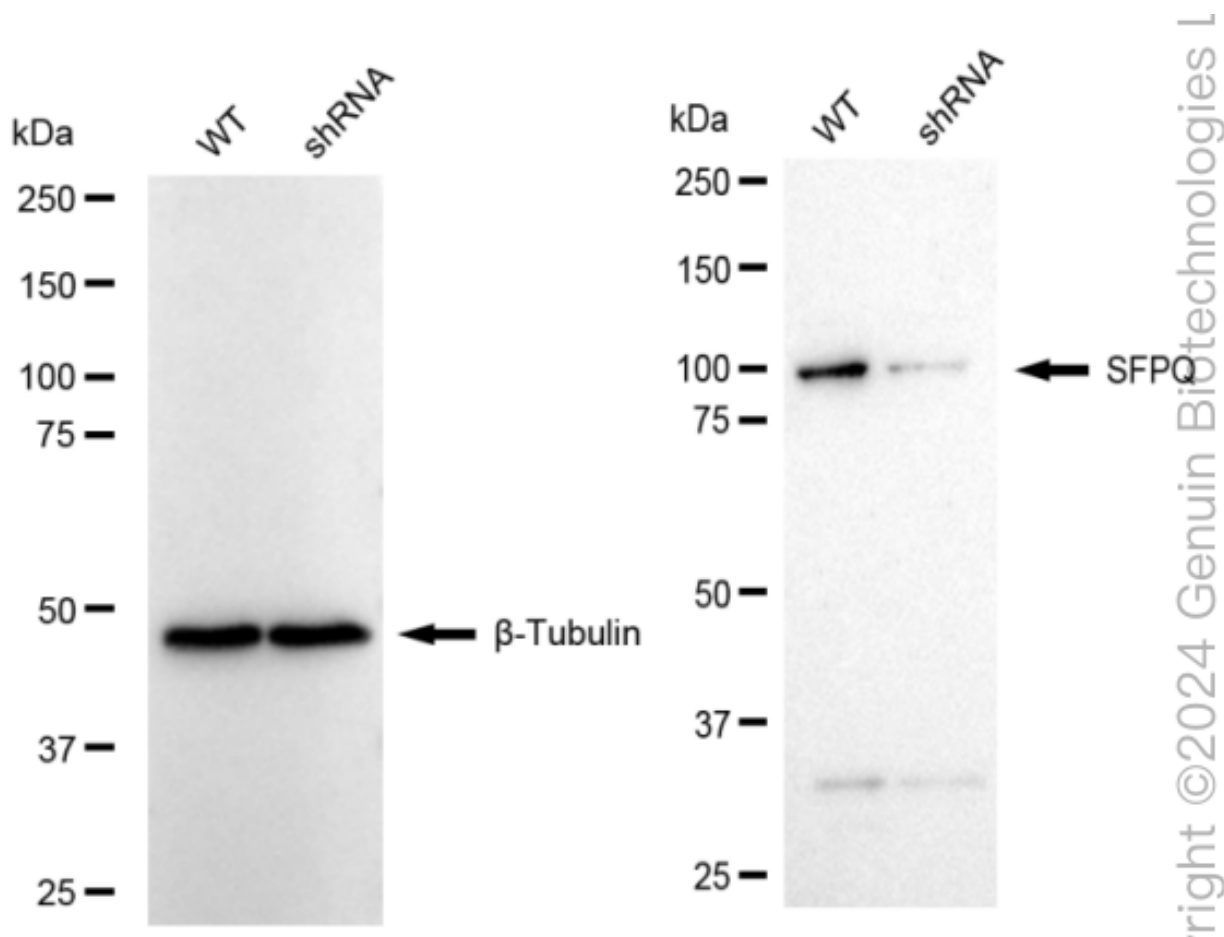
SALES@GENUINBIOTECH.COM  
FAX: +1-540-855-7041

[WWW.GENUINBIOTECH.COM](http://WWW.GENUINBIOTECH.COM)

## KD-Validated Anti-SFPQ Recombinant Rabbit Monoclonal Antibody

PAGE 4

various cell lines were loaded and separated by SDS-PAGE. The blot was incubated with anti-SFPQ antibody (Cat#62518, 1:5,000) and HRP-conjugated goat anti-rabbit secondary antibody (Cat#201, 1:20,000) respectively. Image was developed using FeQ™ ECL Substrate Kit (Cat#226).



Western blotting analysis using anti-SFPQ antibody (Cat#62518). SFPQ expression in wild type (WT) and SFPQ shRNA knockdown (KD) HeLa cells with 20  $\mu$ g of total cell lysates.  $\beta$ -Tubulin serves as a loading control. The blot was incubated with anti-SFPQ antibody (Cat#62518, 1:5,000) and HRP-conjugated goat anti-rabbit secondary antibody (Cat#201, 1:20,000) respectively. Image was developed using NaQ™ ECL Substrate Kit (Cat#716).

### SUPPORT

SUPPORT@GENUINBIOTECH.COM  
TEL: +1-540-855-7041

### ORDERS

SALES@GENUINBIOTECH.COM  
FAX: +1-540-855-7041

WWW.GENUINBIOTECH.COM