

# KD-Validated Anti-Plexin A1 Recombinant Rabbit Monoclonal Antibody



**Catalog #: 62523**

## Aliases

Plexin A1; NOV; PLXN1; Semaphorin Receptor NOV; PLEXIN-A1; Plexin-A1; Plexin 1; DWOPNED; NOV P

## Background

Gene Name: PLXNA1

NCBI Gene Entry: [5361](#)

UniProt Entry: [Q9UIW2](#)

## Application Information

Molecular Weight: Predicted, 211 kDa, observed, 240 kDa

Clonality: Rabbit monoclonal antibody

Clone ID: 24GB1245

Species Reactivity: Human, mouse, rat

Applications Tested: Western blotting (WB)

## Immunogen

A synthesized peptide derived from human Plexin A1

## Isotype

Rabbit IgG

## Storage Buffer

Supplied in PBS (pH 7.4) containing 50% glycerol, and 0.02% sodium azide.

## Storage

Store at -20 °C for one year.

## Recommended Dilutions

Western Blotting (WB): 1:1,000-1:5,000

**Note:** This product is for research use only.

## Validation Data

---

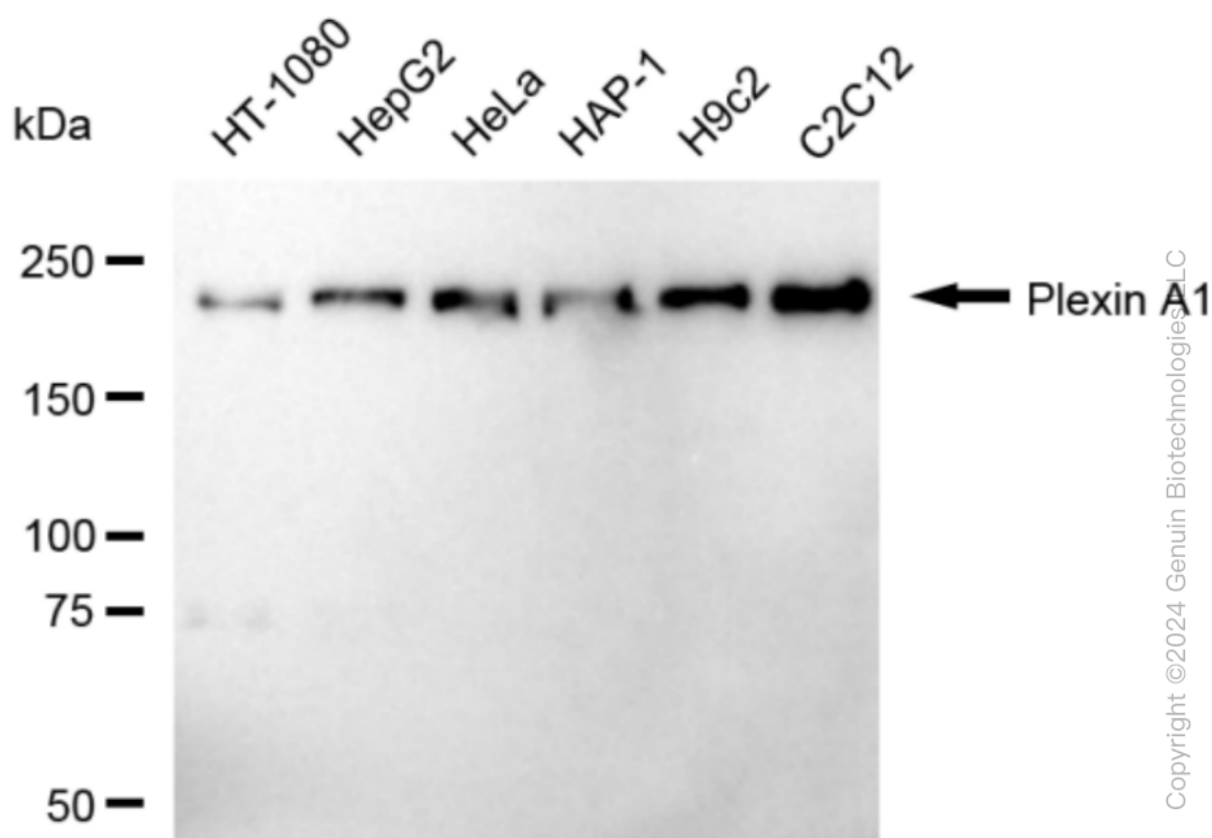
### SUPPORT

SUPPORT@GENUINBIOTECH.COM  
TEL: +1-540-855-7041

### ORDERS

SALES@GENUINBIOTECH.COM  
FAX: +1-540-855-7041

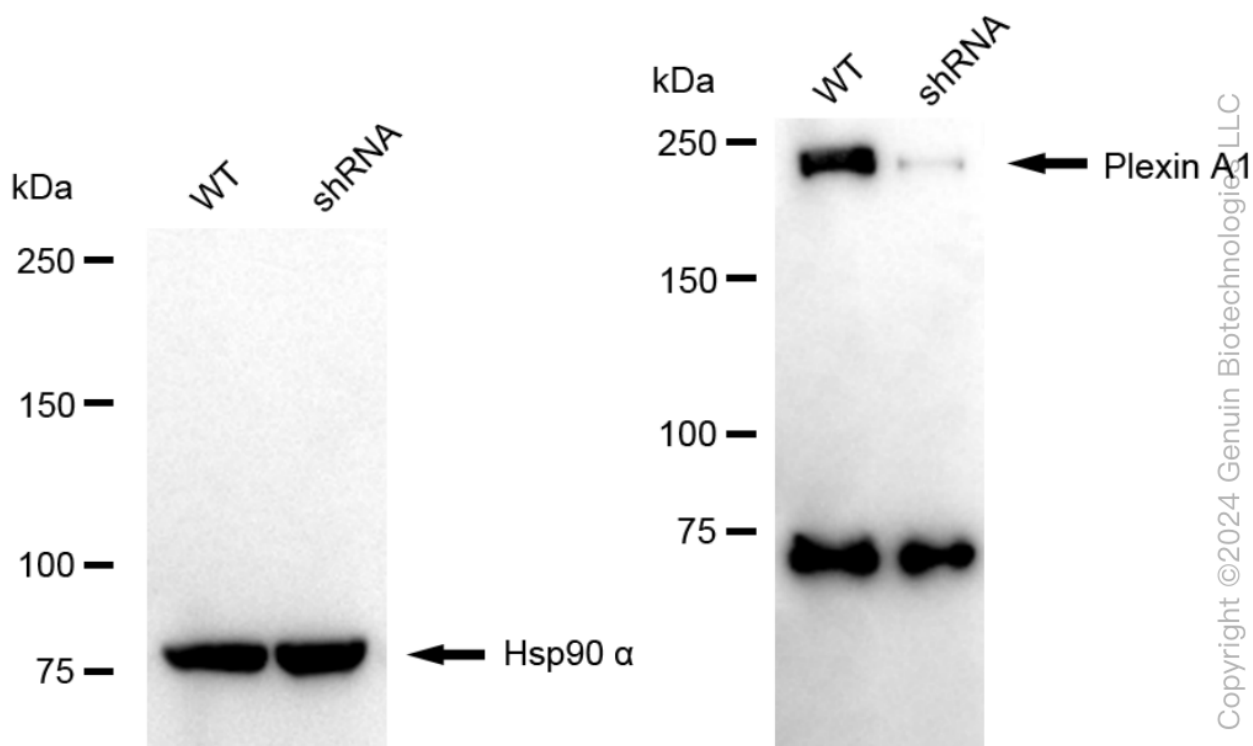
[WWW.GENUINBIOTECH.COM](http://WWW.GENUINBIOTECH.COM)



Western blotting analysis using anti-Plexin A1 antibody (Cat#62523). Total cell lysates (30 µg) from various cell lines were loaded and separated by SDS-PAGE. The blot was incubated with anti-Plexin A1 antibody (Cat#62523, 1:5,000) and HRP-conjugated goat anti-rabbit secondary antibody (Cat#201, 1:20,000) respectively. Image was developed using FeQ™ ECL Substrate Kit (Cat#226).

## KD-Validated Anti-Plexin A1 Recombinant Rabbit Monoclonal Antibody

PAGE 3



Western blotting analysis using anti-plexin A1 antibody (Cat#62523). Plexin A1 expression in wild-type (WT) and plexin A1 (PLXNA1) shRNA knockdown (KD) HT-1080 cells with 30  $\mu$ g of total cell lysates. Hsp90  $\alpha$  serves as a loading control. The blot was incubated with anti-Plexin A1 antibody (Cat#62523, 1:5,000) and HRP-conjugated goat anti-rabbit secondary antibody (Cat#201, 1:20,000) respectively. Image was developed using NaQ<sup>TM</sup> ECL Substrate Kit (Cat#716).

### SUPPORT

SUPPORT@GENUINBIOTECH.COM  
TEL: +1-540-855-7041

### ORDERS

SALES@GENUINBIOTECH.COM  
FAX: +1-540-855-7041

[WWW.GENUINBIOTECH.COM](http://WWW.GENUINBIOTECH.COM)