

KD-Validated Anti-Phospho-PLCB3 (S537) Recombinant Rabbit Monoclonal Antibody



Catalog #: 62526

Aliases

Phospholipase C Beta 3; 1-Phosphatidylinositol 4,5-Bisphosphate Phosphodiesterase Beta-3; Phospholipase C, Beta 3 (Phosphatidylinositol-Specific); Phosphoinositide Phospholipase C-Beta-3; EC 3.1.4.11; Phospholipase C-Beta-3; PLC Beta 3; PLC-Beta-3; SMDCD

Background

Gene Name: PLCB3

NCBI Gene Entry: [5331](#)

UniProt Entry: [Q01970](#)

Application Information

Molecular Weight: Predicted, 139 kDa, observed, 150 kDa

Clonality: Rabbit monoclonal antibody

Clone ID: 24GB1260

Species Reactivity: Human, mouse, rat

Applications Tested: Western blotting (WB), immunocytochemistry (IC)

Immunogen

A synthesized peptide derived from human Phospho-PLCB3 (S537)

Isotype

Rabbit IgG

Storage Buffer

Supplied in PBS (pH 7.4) containing 50% glycerol, and 0.02% sodium azide.

Storage

Store at -20 °C for one year.

Recommended Dilutions

Western Blotting (WB): 1:1,000-1:5,000

Immunocytochemistry (IC): 1:100-1:1,000

Note: This product is for research use only.

Validation Data

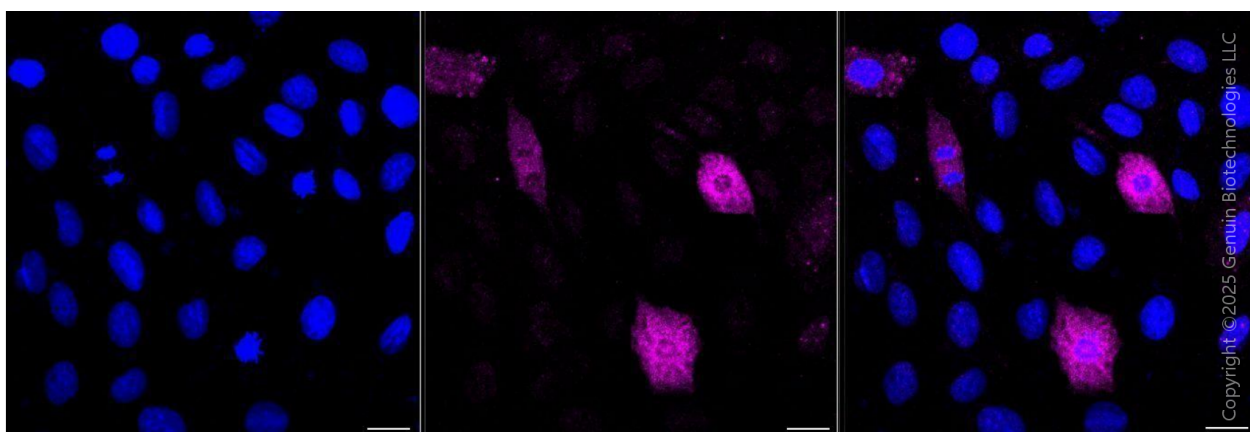
SUPPORT

SUPPORT@GENUINBIOTECH.COM
TEL: +1-540-855-7041

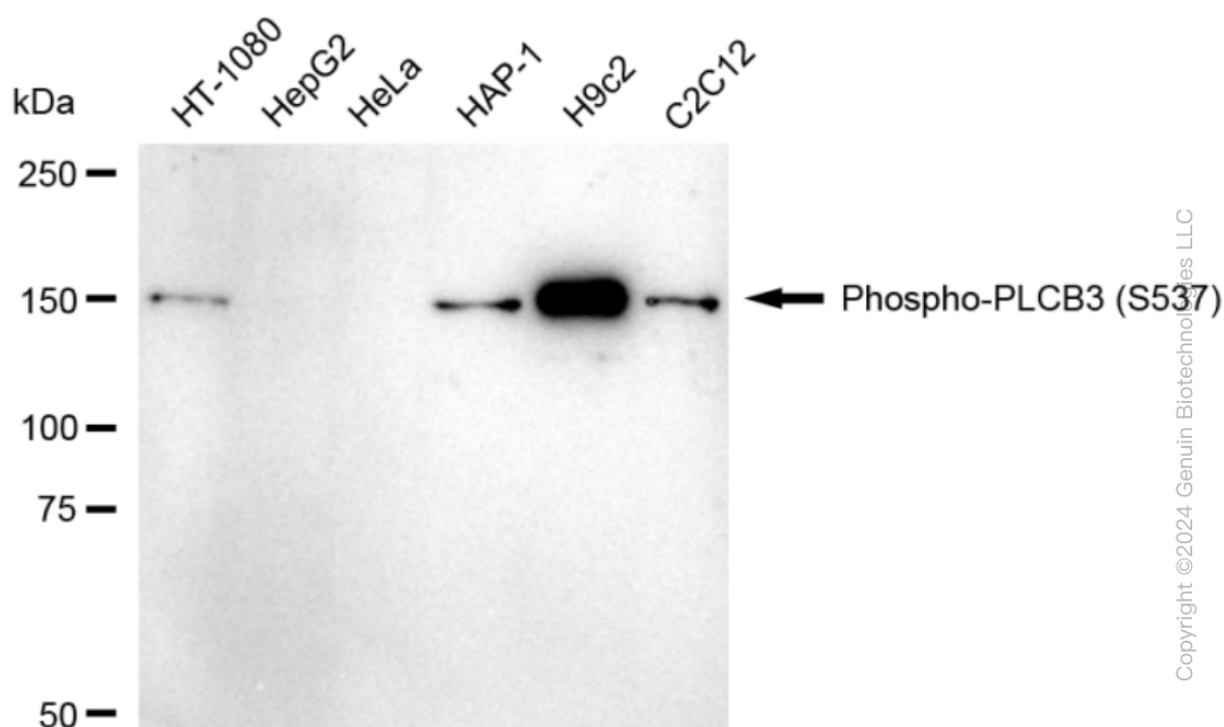
ORDERS

SALES@GENUINBIOTECH.COM
FAX: +1-540-855-7041

WWW.GENUINBIOTECH.COM



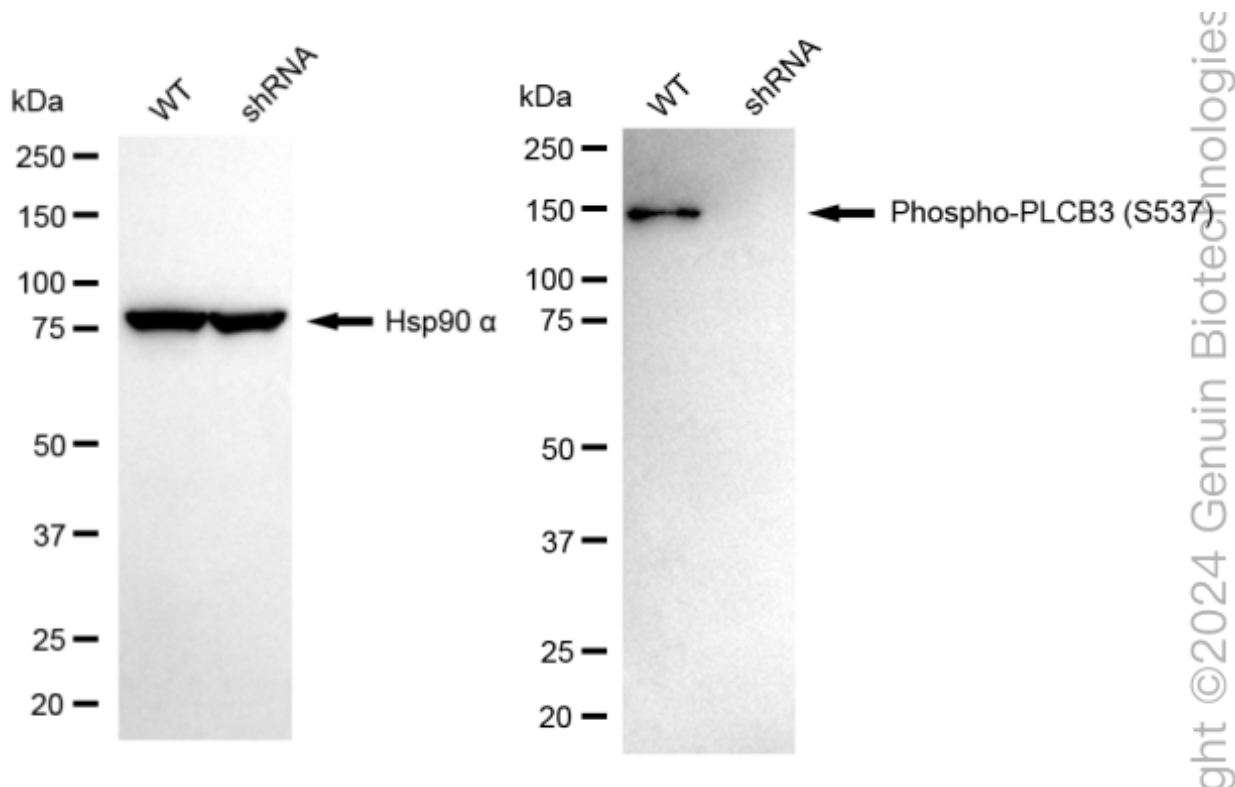
Immunocytochemical staining of H9c2 cells with anti-Phospho-PLCB3 (S537) antibody (Cat#62526, 1:1,000) . Nuclei were stained blue with DAPI; Phospho-PLCB3 (S537) was stained magenta with Alexa Fluor® 647. Images were taken using Leica stellaris 5. Protein abundance based on laser Intensity and smart gain: Medium. Scale bar, 20 μ m.



Western blotting analysis using anti-Phospho-PLCB3 (S537) antibody (Cat#62526). Total cell lysates (30 μ g) from various cell lines were loaded and separated by SDS-PAGE. The blot was incubated with anti-Phospho-PLCB3 (S537) antibody (Cat#62526, 1:5,000) and HRP-conjugated goat anti-rabbit secondary antibody (Cat#201, 1:20,000) respectively. Image was developed using FeQ™ ECL Substrate Kit (Cat#226).

KD-Validated Anti-Phospho-PLCB3 (S537) Recombinant Rabbit Monoclonal Antibody

PAGE 3



Western blotting analysis using anti-phospho-PLCB3 (S537) antibody (Cat#62526). Phospho-PLCB3 (S537) expression in wild-type (WT) and PLCB3 shRNA knockdown (KD) HT-1080 cells with 30 µg of total cell lysates. Hsp90 α serves as a loading control. The blot was incubated with anti-phospho-PLCB3 (S537) antibody (Cat#62526, 1:5,000) and HRP-conjugated goat anti-rabbit secondary antibody (Cat#201, 1:20,000) respectively. Image was developed using NaQ™ ECL Substrate Kit (Cat#716).

SUPPORT

SUPPORT@GENUINBIOTECH.COM
TEL: +1-540-855-7041

ORDERS

SALES@GENUINBIOTECH.COM
FAX: +1-540-855-7041

WWW.GENUINBIOTECH.COM