

KD-Validated Anti-NHERF1 Recombinant Rabbit Monoclonal Antibody



Catalog #: 62529

Aliases

NHERF1; NHERF Family PDZ Scaffold Protein 1; NHERF-1; NHERF; EBP50; SLC9A3R1; NHE-RF; Solute Carrier Family 9, Subfamily A (NHE3, Cation Proton Antiporter 3), Member 3 Regulator 1; Na(+)/H(+) Exchange Regulatory Cofactor NHE-RF1; Ezrin-Radixin-Moesin-Binding Phosphoprotein 50; Regulatory Cofactor Of Na(+)/H(+) Exchanger; Na(+)/H(+) Exchange Regulatory Cofactor 1; SLC9A3 Regulator 1; Solute Carrier Family 9 (Sodium/Hydrogen Exchanger), Isoform 3 Regulatory Factor 1; Solute Carrier Family 9 (Sodium/Hydrogen Exchanger), Isoform 3 Regulator 1; Solute Carrier Family 9 (Sodium/Hydrogen Exchanger), Member 3 Regulator 1; Solute Carrier Family 9 Isoform A3 Regulatory Factor 1; Ezrin-Radixin-Moesin Binding Phosphoprotein-50; Sodium-Hydrogen Exchanger Regulatory Factor 1; Na⁺/H⁺ Exchange Regulatory Co-Factor; NPHLOP2

Background

Gene Name: NHERF1

NCBI Gene Entry: [9368](#)

UniProt Entry: [O14745](#)

Application Information

Molecular Weight: Predicted, 39 kDa, observed, 50 kDa

Clonality: Rabbit monoclonal antibody

Clone ID: 24GB1270

Species Reactivity: Human, rat

Applications Tested: Western blotting (WB), flow cytometry (FCM)

Immunogen

A synthesized peptide derived from human EBP50

Isotype

Rabbit IgG

Storage Buffer

Supplied in PBS (pH 7.4) containing 50% glycerol, and 0.02% sodium azide.

Storage

Store at -20 °C for one year.

SUPPORT

SUPPORT@GENUINBIOTECH.COM
TEL: +1-540-855-7041

ORDERS

SALES@GENUINBIOTECH.COM
FAX: +1-540-855-7041

WWW.GENUINBIOTECH.COM

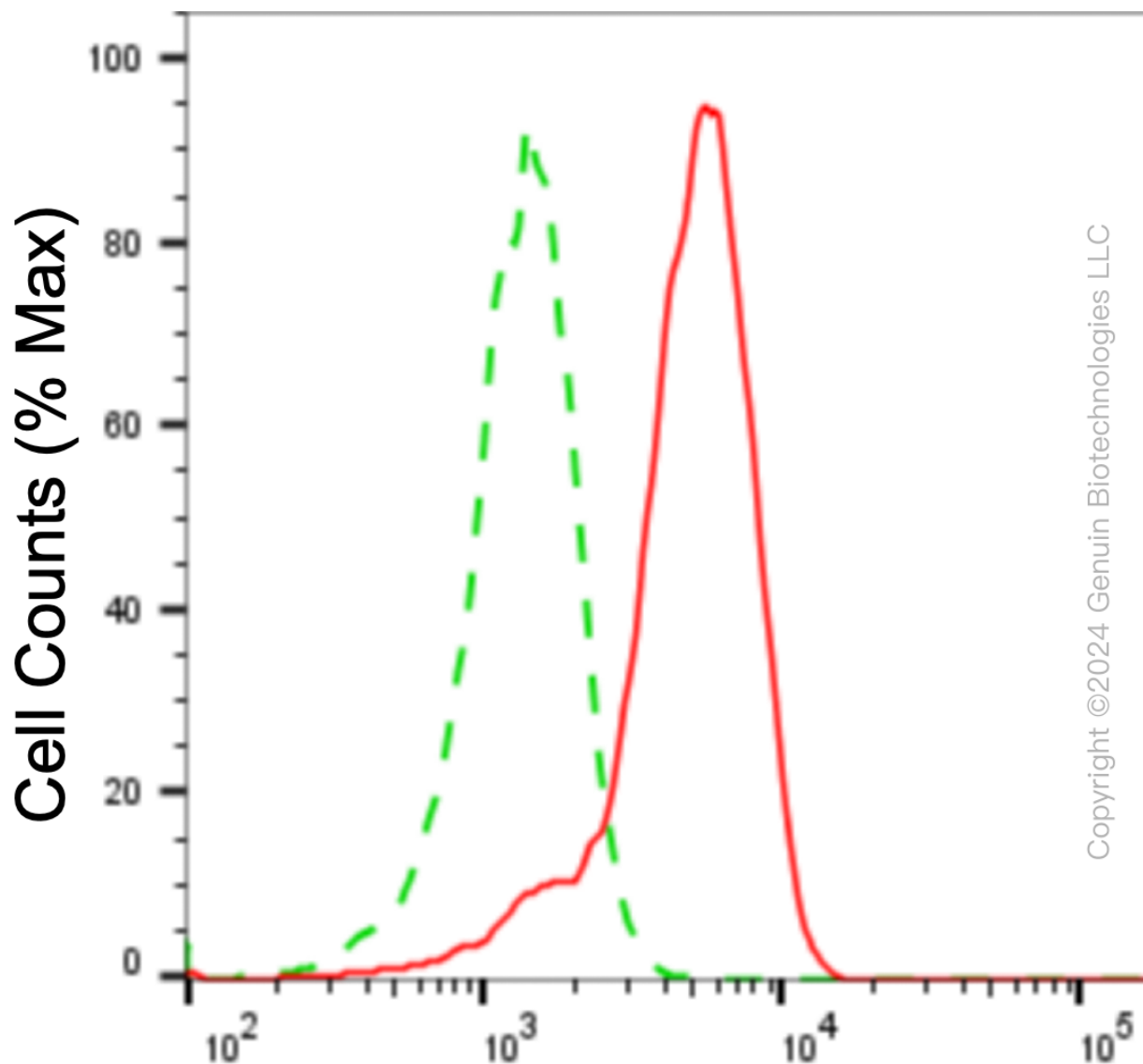
Recommended Dilutions

Western Blotting (WB): 1:1,000-1:5,000

Flow Cytometry (FCM): 1:2,000

Note: This product is for research use only.

Validation Data



EBP50-Alexa Fluor[®] 647

Flow cytometric analysis of EBP50 expression in H9c2 cells using anti-EBP50 antibody (Cat#62529, 1:2,000). Green, isotype control; red, EBP50.

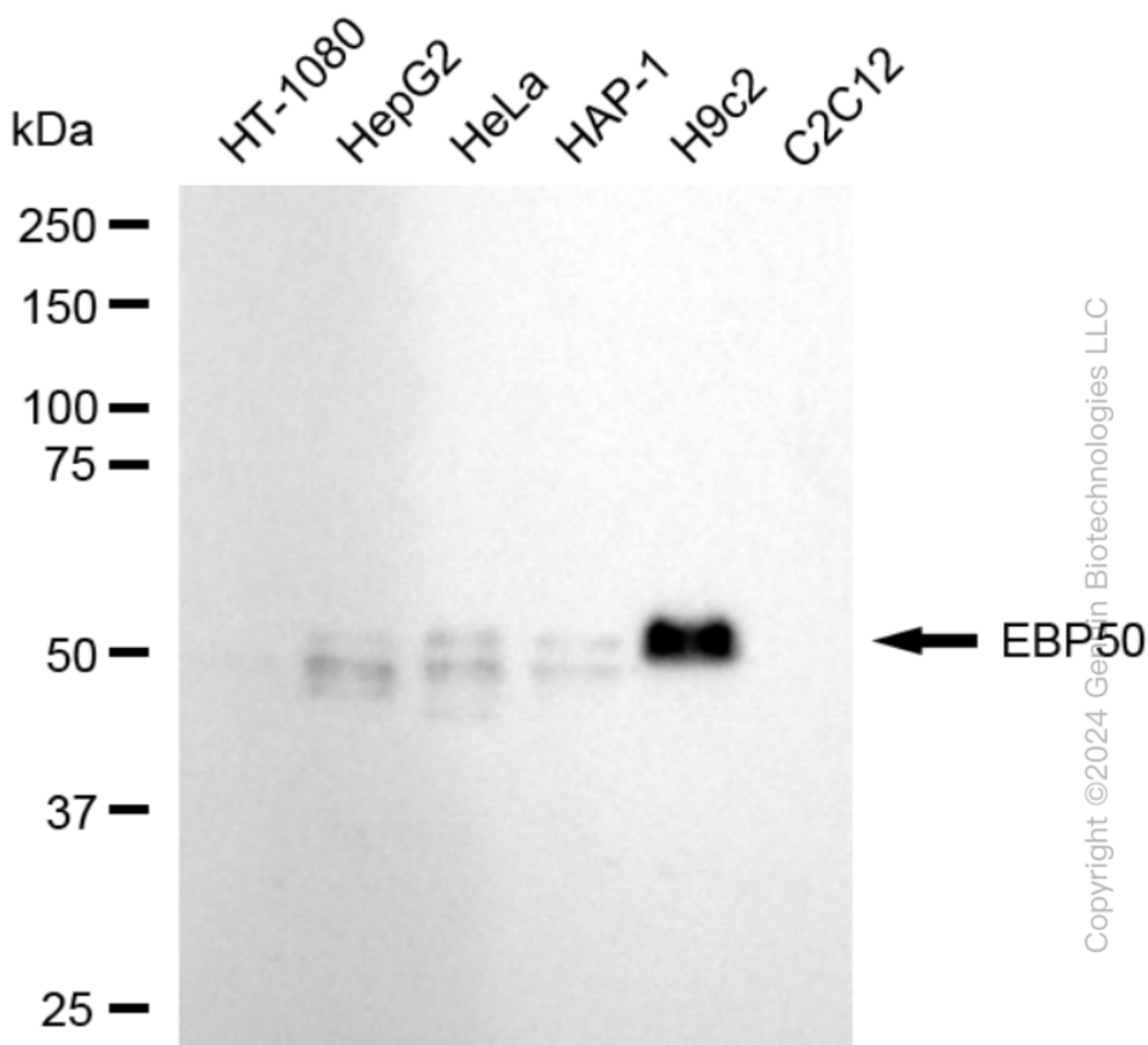
SUPPORT

SUPPORT@GENUINBIOTECH.COM
TEL: +1-540-855-7041

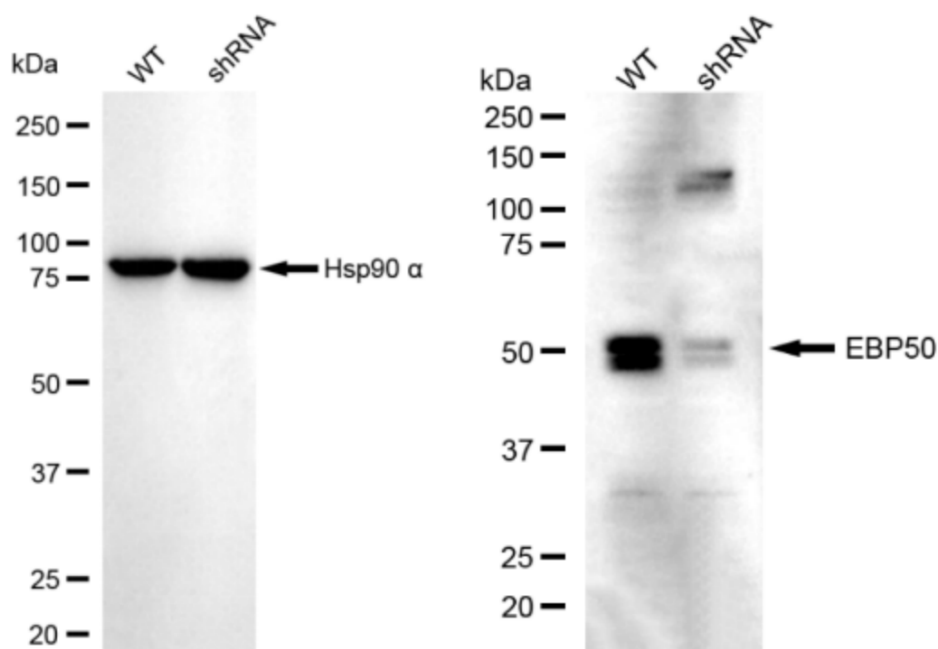
ORDERS

SALES@GENUINBIOTECH.COM
FAX: +1-540-855-7041

WWW.GENUINBIOTECH.COM

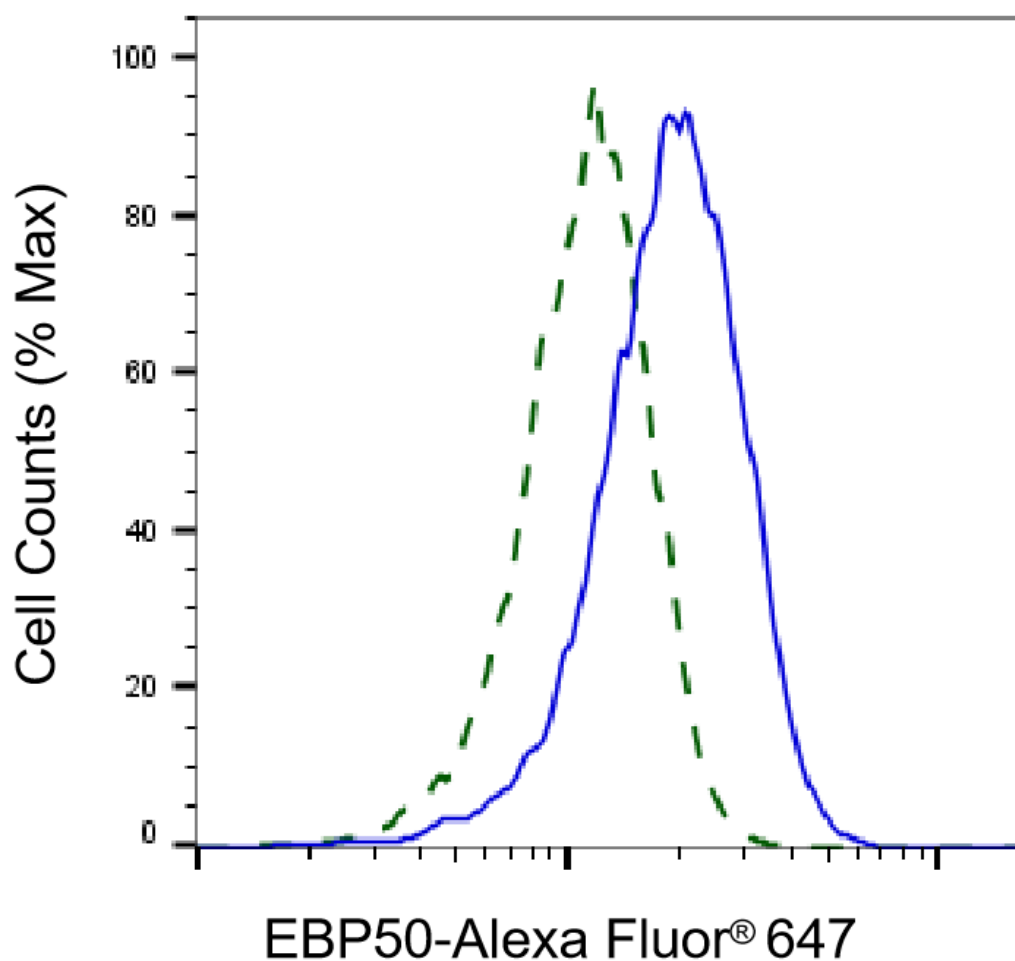


Western blotting analysis using anti-NHERF Family PDZ Scaffold Protein 1 antibody (Cat#62529). Total cell lysates (30 µg) from various cell lines were loaded and separated by SDS-PAGE. The blot was incubated with anti-NHERF Family PDZ Scaffold Protein 1 antibody (Cat#62529, 1:5,000) and HRP-conjugated goat anti-rabbit secondary antibody (Cat#201, 1:20,000) respectively. Image was developed using NaQ™ ECL Substrate Kit (Cat#716).



Copyright ©2024 Genuin Biotechnologies LLC

Western blotting analysis using anti-EBP50 antibody (Cat#62529). EBP50 expression in wild-type (WT) and NHERF1 shRNA knockdown (KD) HeLa cells with 20 µg of total cell lysates. Hsp90 α serves as a loading control. The blot was incubated with anti-EBP50 antibody (Cat#62529, 1:5,000) and HRP-conjugated goat anti-rabbit secondary antibody (Cat#201, 1:20,000) respectively. Image was developed using NaQ™ ECL Substrate Kit (Cat#716).



Copyright ©2025 Genuin Biotechnologies LLC

Validation of EBP50 knockdown using flow cytometry. Wild-type(WT, Blue) and knockdown(KD, Green) HeLa cells were stained with anti-EBP50 antibody (Cat#62529, 1:2,000) and analyzed using BD flow cytometer.