

# KD-Validated Anti-Nuclear Mitotic Apparatus Protein 1 Recombinant Rabbit Monoclonal



**Catalog #: 62534**

## Aliases

NUMA1; Nuclear Mitotic Apparatus Protein 1; NUMA; Nuclear Matrix Protein-22; SP-H Antigen; NMP-22; Centrophilin Stabilizes Mitotic Spindle In Mitotic Cells; Nuclear Mitotic Apparatus Protein; Structural Nuclear Protein; NuMA Protein; NMP22

## Background

Gene Name: NUMA1

NCBI Gene Entry: [4926](#)

UniProt Entry: [Q14980](#)

## Application Information

Molecular Weight: Predicted, 238 kDa, observed, 248 kDa

Clonality: Rabbit monoclonal antibody

Clone ID: 24GB1290

Species Reactivity: Human, mouse, rat

Applications Tested: Western blotting (WB), flow cytometry (FCM), immunocytochemistry (IC)

## Immunogen

A synthesized peptide derived from human NUMA1

## Isotype

Rabbit IgG

## Storage Buffer

Supplied in PBS (pH 7.4) containing 50% glycerol, and 0.02% sodium azide.

## Storage

Store at -20 °C for one year.

## Recommended Dilutions

Western Blotting (WB): 1:1,000-1:5,000

Flow Cytometry (FCM): 1:2,000

Immunocytochemistry (IC): 1:100-1:1,000

**Note:** This product is for research use only.

---

### SUPPORT

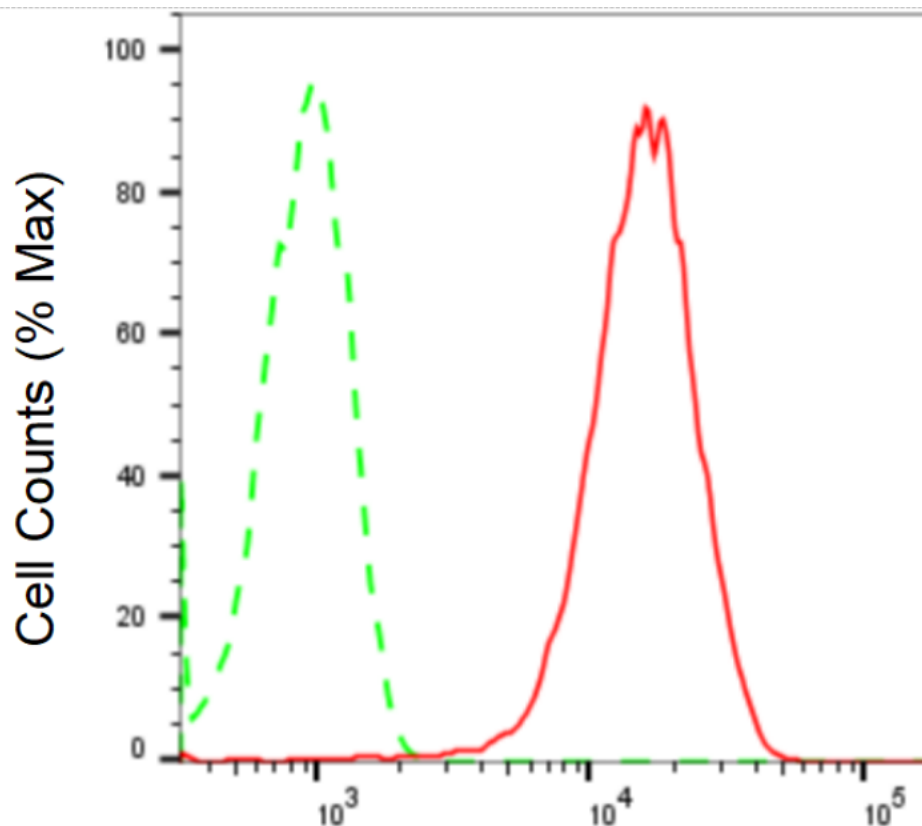
SUPPORT@GENUINBIOTECH.COM  
TEL: +1-540-855-7041

### ORDERS

SALES@GENUINBIOTECH.COM  
FAX: +1-540-855-7041

[WWW.GENUINBIOTECH.COM](http://WWW.GENUINBIOTECH.COM)

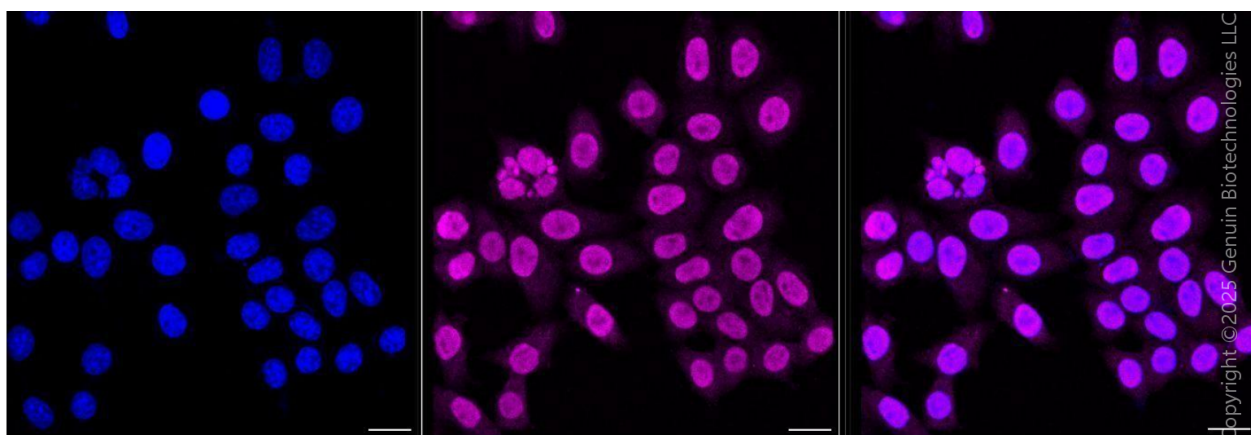
**Validation Data**



Copyright ©2024 Genuin Biotechnologies LLC

**Nuclear mitotic apparatus protein 1-Alexa Fluor®  
647**

Flow cytometric analysis of Nuclear mitotic apparatus protein 1 expression in HepG2 cells using anti-Nuclear mitotic apparatus protein 1 antibody (Cat#62534, 1:2,000). Green, isotype control; red, Nuclear mitotic apparatus protein 1.



Immunocytochemical staining of HepG2 cells with anti-Nuclear mitotic apparatus protein 1 antibody (Cat#62534, 1:1,000) . Nuclei were stained blue with DAPI; Nuclear mitotic apparatus

**SUPPORT**

SUPPORT@GENUINBIOTECH.COM  
TEL: +1-540-855-7041

**ORDERS**

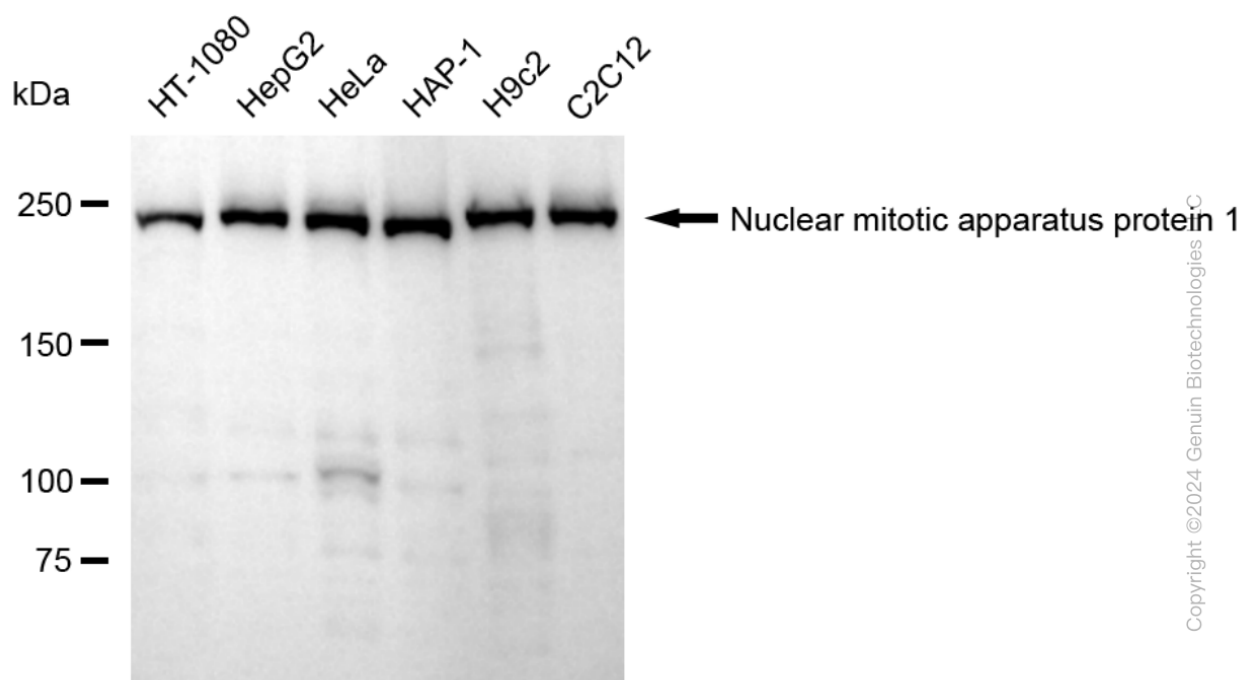
SALES@GENUINBIOTECH.COM  
FAX: +1-540-855-7041

**WWW.GENUINBIOTECH.COM**

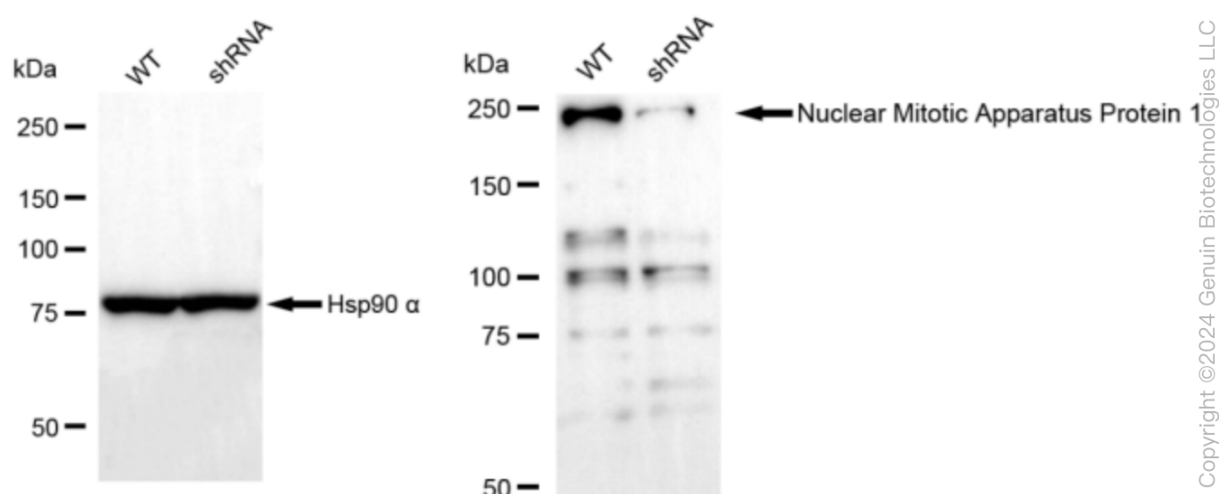
## KD-Validated Anti-Nuclear Mitotic Apparatus Protein 1 Recombinant Rabbit Monoclonal

PAGE 3

protein 1 was stained magenta with Alexa Fluor® 647. Images were taken using Leica stellaris 5. Protein abundance based on laser Intensity and smart gain: High. Scale bar, 20 µm.



Western blotting analysis using anti-Nuclear mitotic apparatus protein 1 antibody (Cat#62534). Total cell lysates (30 µg) from various cell lines were loaded and separated by SDS-PAGE. The blot was incubated with anti-Nuclear mitotic apparatus protein 1 antibody (Cat#62534, 1:5,000) and HRP-conjugated goat anti-rabbit secondary antibody (Cat#201, 1:20,000) respectively. Image was developed using NaQ™ ECL Substrate Kit (Cat#716).



Western blotting analysis using anti-Nuclear Mitotic Apparatus Protein 1 antibody (Cat#62534). Nuclear Mitotic Apparatus Protein 1 expression in wild type (WT) and Nuclear Mitotic Apparatus

### SUPPORT

SUPPORT@GENUINBIOTECH.COM  
TEL: +1-540-855-7041

### ORDERS

SALES@GENUINBIOTECH.COM  
FAX: +1-540-855-7041

WWW.GENUINBIOTECH.COM

## **KD-Validated Anti-Nuclear Mitotic Apparatus Protein 1 Recombinant Rabbit Monoclonal**

PAGE 4

Protein 1 shRNA knockdown (KD) HeLa cells with 20 µg of total cell lysates. Hsp90  $\alpha$  serves as a loading control. The blot was incubated with anti-Nuclear Mitotic Apparatus Protein 1 antibody (Cat#62534, 1:5,000) and HRP-conjugated goat anti-rabbit secondary antibody (Cat#201, 1:20,000) respectively. Image was developed using NaQ™ ECL Substrate Kit (Cat#716).

---

### **SUPPORT**

SUPPORT@GENUINBIOTECH.COM  
TEL: +1-540-855-7041

### **ORDERS**

SALES@GENUINBIOTECH.COM  
FAX: +1-540-855-7041

**WWW.GENUINBIOTECH.COM**