

KD-Validated Anti-Malate Dehydrogenase 1 Recombinant Rabbit Monoclonal Antibody



Catalog #: 62535

Aliases

MDH1; Malate Dehydrogenase 1; Malate Dehydrogenase 1, NAD (Soluble); Aromatic Alpha-Keto Acid Reductase; Malate Dehydrogenase, Cytoplasmic; Cytosolic Malate Dehydrogenase; EC 1.1.1.37; MDHA; KAR; Epididymis Secretory Protein Li 32; Malate Dehydrogenase, Peroxisomal; Diiodophenylpyruvate Reductase; Soluble Malate Dehydrogenase; EC 1.1.1.96; HEL-S-32; MGC:1375; EIEE88; DEE88; MDH-S; MOR2

Background

Gene Name: MDH1

NCBI Gene Entry: [4190](#)

UniProt Entry: [P40925](#)

Application Information

Molecular Weight: Predicted, 36 kDa, observed, 36 kDa

Clonality: Rabbit monoclonal antibody

Clone ID: 24GB1295

Species Reactivity: Human, mouse, rat

Applications Tested: Western blotting (WB), flow cytometry (FCM), immunocytochemistry (IC)

Immunogen

A synthesized peptide derived from human MDH1

Isotype

Rabbit IgG

Storage Buffer

Supplied in PBS (pH 7.4) containing 50% glycerol, and 0.02% sodium azide.

Storage

Store at -20 °C for one year.

Recommended Dilutions

Western Blotting (WB): 1:1,000-1:5,000

Flow Cytometry (FCM): 1:2,000

Immunocytochemistry (IC): 1:100-1:1,000

SUPPORT

SUPPORT@GENUINBIOTECH.COM
TEL: +1-540-855-7041

ORDERS

SALES@GENUINBIOTECH.COM
FAX: +1-540-855-7041

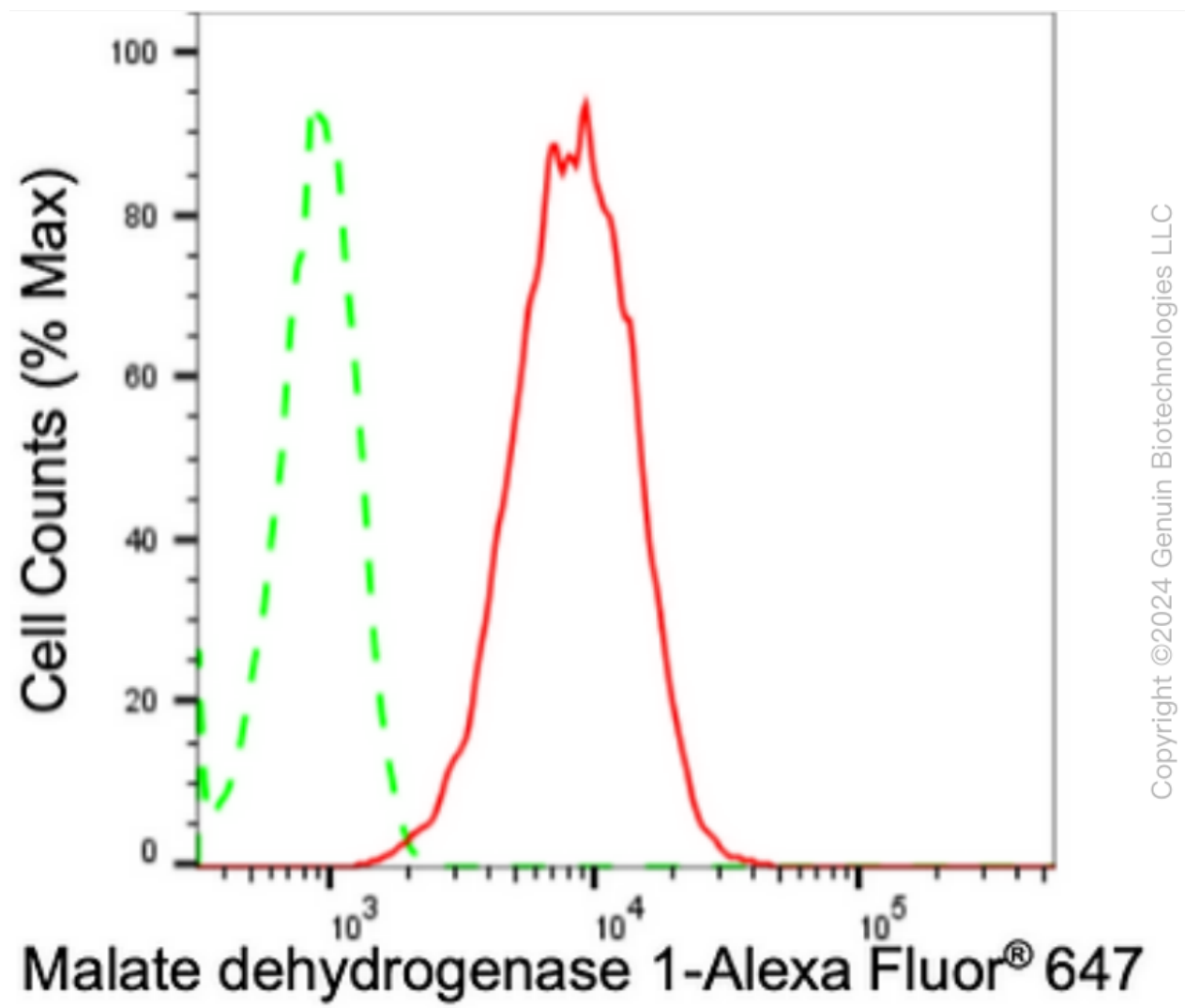
WWW.GENUINBIOTECH.COM

KD-Validated Anti-Malate Dehydrogenase 1 Recombinant Rabbit Monoclonal Antibody

PAGE 2

Note: This product is for research use only.

Validation Data



Flow cytometric analysis of Malate dehydrogenase 1 expression in HepG2 cells using anti-Malate dehydrogenase 1 antibody (Cat#62535, 1:2,000). Green, isotype control; red, Malate dehydrogenase 1.

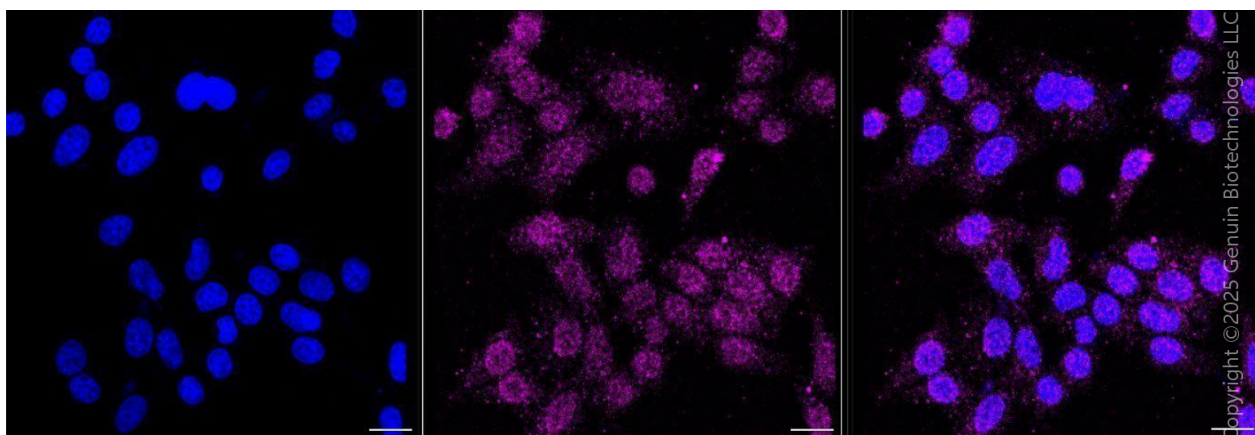
SUPPORT

SUPPORT@GENUINBIOTECH.COM
TEL: +1-540-855-7041

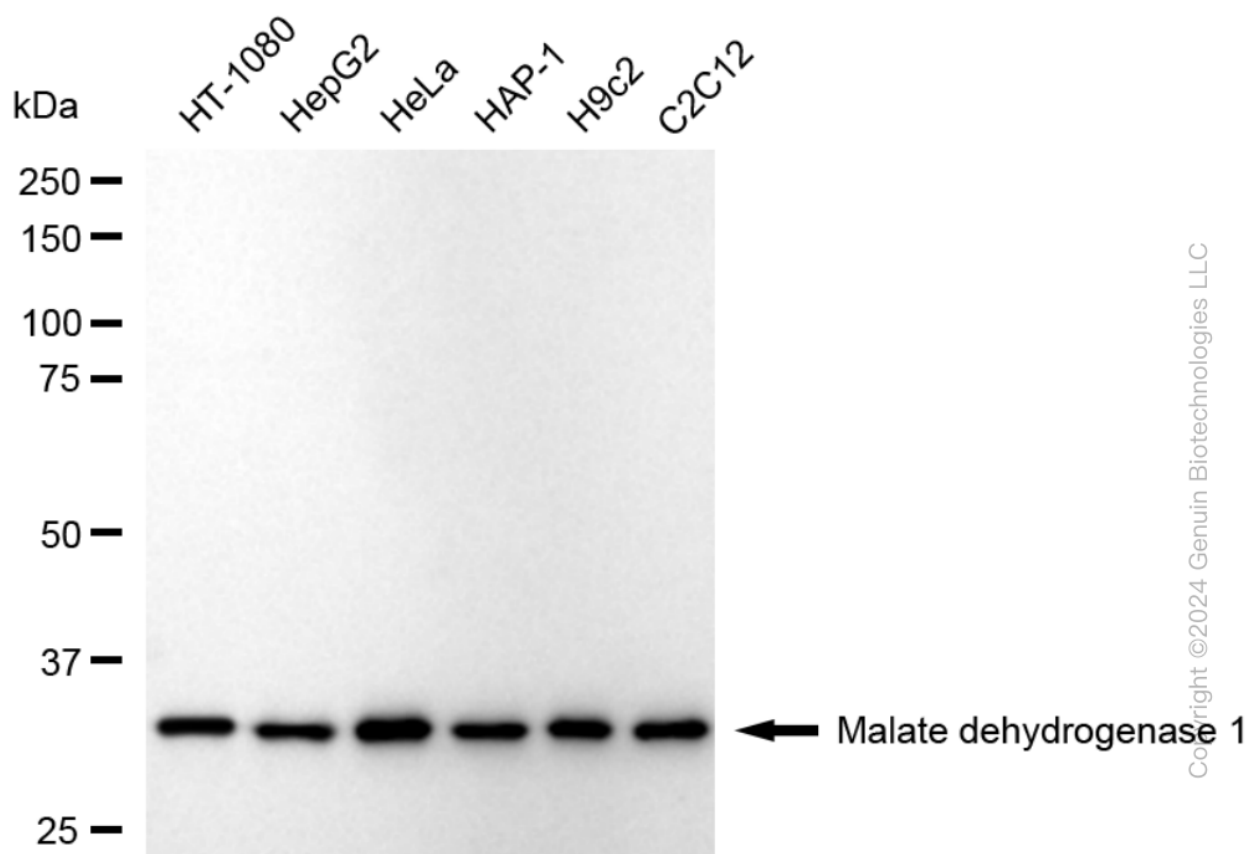
ORDERS

SALES@GENUINBIOTECH.COM
FAX: +1-540-855-7041

WWW.GENUINBIOTECH.COM



Immunocytochemical staining of HepG2 cells with anti-Malate dehydrogenase 1 antibody (Cat#62535, 1:1,000) . Nuclei were stained blue with DAPI; Malate dehydrogenase 1 was stained magenta with Alexa Fluor® 647. Images were taken using Leica stellaris 5. Protein abundance based on laser Intensity and smart gain: Medium. Scale bar, 20 μ m.



Western blotting analysis using anti-Malate dehydrogenase 1 antibody (Cat#62535). Total cell lysates (30 μ g) from various cell lines were loaded and separated by SDS-PAGE. The blot was incubated with anti-Malate dehydrogenase 1 antibody (Cat#62535, 1:5,000) and HRP-conjugated goat anti-rabbit secondary antibody (Cat#201, 1:20,000) respectively. Image was developed using NaQ™ ECL Substrate Kit (Cat#716).

SUPPORT

SUPPORT@GENUINBIOTECH.COM
TEL: +1-540-855-7041

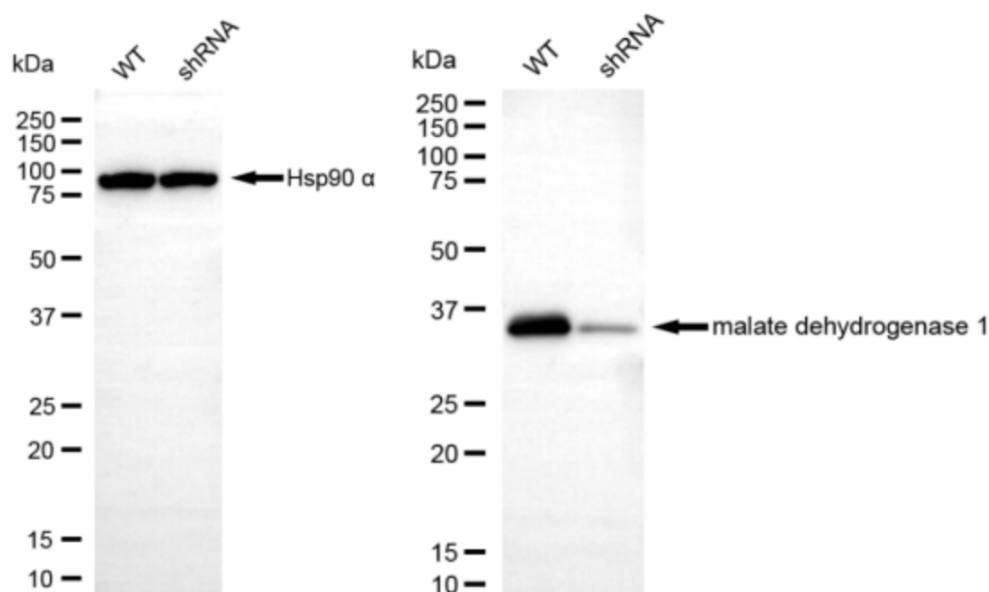
ORDERS

SALES@GENUINBIOTECH.COM
FAX: +1-540-855-7041

WWW.GENUINBIOTECH.COM

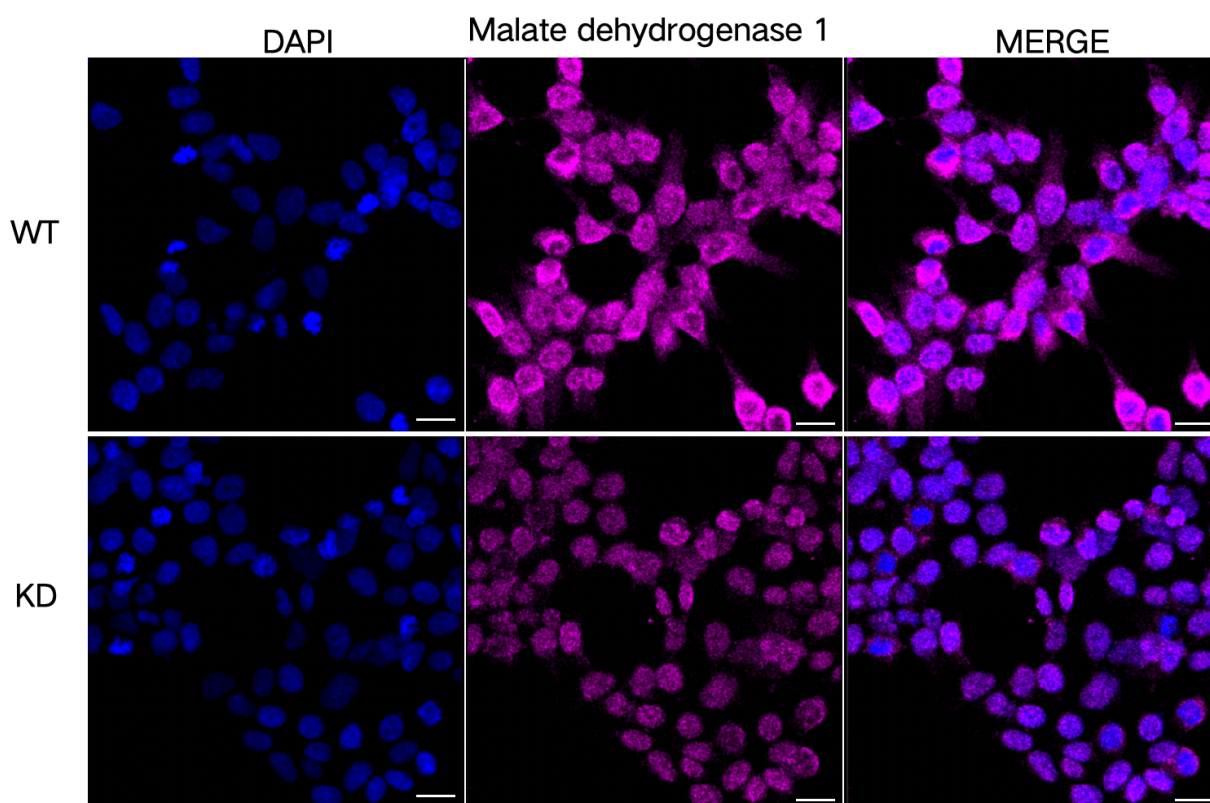
KD-Validated Anti-Malate Dehydrogenase 1 Recombinant Rabbit Monoclonal Antibody

PAGE 4



Copyright ©2024 Genuin Biotechnologies LLC

Western blotting analysis using anti-malate dehydrogenase 1 antibody (Cat#62535). Malate dehydrogenase 1 expression in wild-type (WT) and malate dehydrogenase 1 (MDH1) shRNA knockdown (KD) HeLa cells with 20 µg of total cell lysates. Hsp90 α serves as a loading control. The blot was incubated with anti-malate dehydrogenase 1 antibody (Cat#62535, 1:5,000) and HRP-conjugated goat anti-rabbit secondary antibody (Cat#201, 1:20,000) respectively. Image was developed using NaQ™ ECL Substrate Kit (Cat#716).



Copyright ©2025 Genuin Biotechnologies LLC

SUPPORT

SUPPORT@GENUINBIOTECH.COM
TEL: +1-540-855-7041

ORDERS

SALES@GENUINBIOTECH.COM
FAX: +1-540-855-7041

WWW.GENUINBIOTECH.COM

KD-Validated Anti-Malate Dehydrogenase 1 Recombinant Rabbit Monoclonal Antibody

PAGE 5

Immunocytochemical staining of HeLa cells using anti-Malate dehydrogenase 1 antibody (Cat#62535, 1:1,000), Top panel: wild-type (WT); Bottom panel: Malate dehydrogenase 1 shRNA knockdown (KD). Nuclei were stained blue with DAPI; Malate dehydrogenase 1 was stained magenta with Alexa Fluor® 647. Scale bar, 20 μ m.

SUPPORT

SUPPORT@GENUINBIOTECH.COM
TEL: +1-540-855-7041

ORDERS

SALES@GENUINBIOTECH.COM
FAX: +1-540-855-7041

WWW.GENUINBIOTECH.COM