

# KD-Validated Anti-PDZ And LIM Domain 1 Recombinant Rabbit Monoclonal Antibody



**Catalog #: 62538**

## Aliases

PDLIM1; PDZ And LIM Domain 1; CLP36; CLP-36; HCLIM1; Elfin; CLIM1; Carboxyl Terminal LIM Domain Protein 1; PDZ And LIM Domain Protein 1; LIM Domain Protein CLP-36; Epididymis Secretory Protein Li 112; C-Terminal LIM Domain Protein 1; PDZ And LIM Domain 1 (Elfin); HEL-S-112

## Background

Gene Name: PDLIM1

NCBI Gene Entry: [9124](#)

UniProt Entry: [O00151](#)

## Application Information

Molecular Weight: Predicted, 36 kDa, observed, 36 kDa

Clonality: Rabbit monoclonal antibody

Clone ID: 24GB1310

Species Reactivity: Human, mouse, rat

Applications Tested: Western blotting (WB), flow cytometry (FCM), immunocytochemistry (IC)

## Immunogen

A synthesized peptide derived from human PDLIM1

## Isotype

Rabbit IgG

## Storage Buffer

Supplied in PBS (pH 7.4) containing 50% glycerol, and 0.02% sodium azide.

## Storage

Store at -20 °C for one year.

## Recommended Dilutions

Western Blotting (WB): 1:1,000-1:5,000

Flow Cytometry (FCM): 1:2,000

Immunocytochemistry (IC): 1:100-1:1,000

---

### SUPPORT

SUPPORT@GENUINBIOTECH.COM  
TEL: +1-540-855-7041

### ORDERS

SALES@GENUINBIOTECH.COM  
FAX: +1-540-855-7041

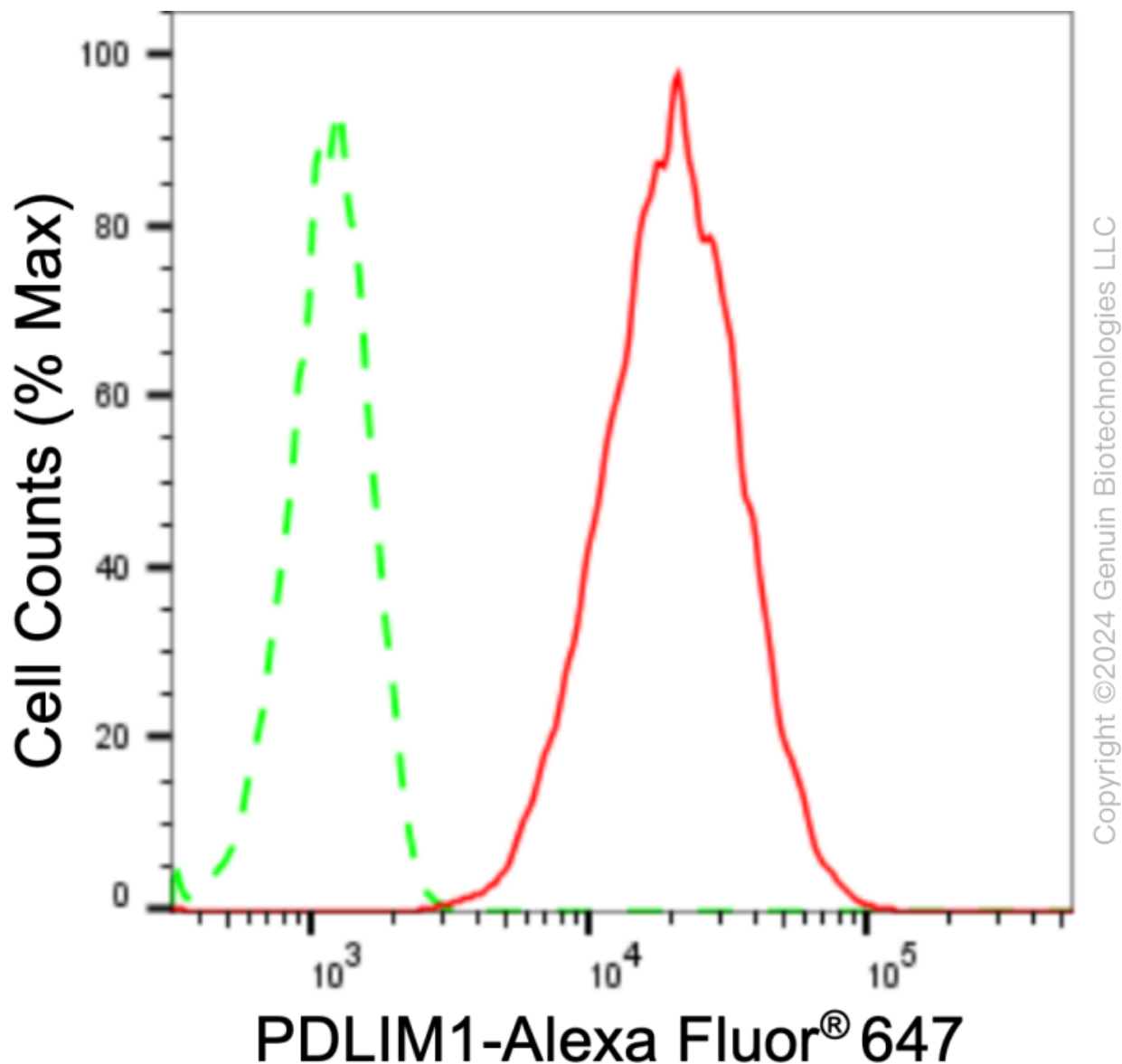
[WWW.GENUINBIOTECH.COM](http://WWW.GENUINBIOTECH.COM)

# KD-Validated Anti-PDZ And LIM Domain 1 Recombinant Rabbit Monoclonal Antibody

PAGE 2

**Note:** This product is for research use only.

## Validation Data



Flow cytometric analysis of PDLIM1 expression in HepG2 cells using anti-PDLIM1 antibody (Cat#62538, 1:2,000). Green, isotype control; red, PDLIM1.

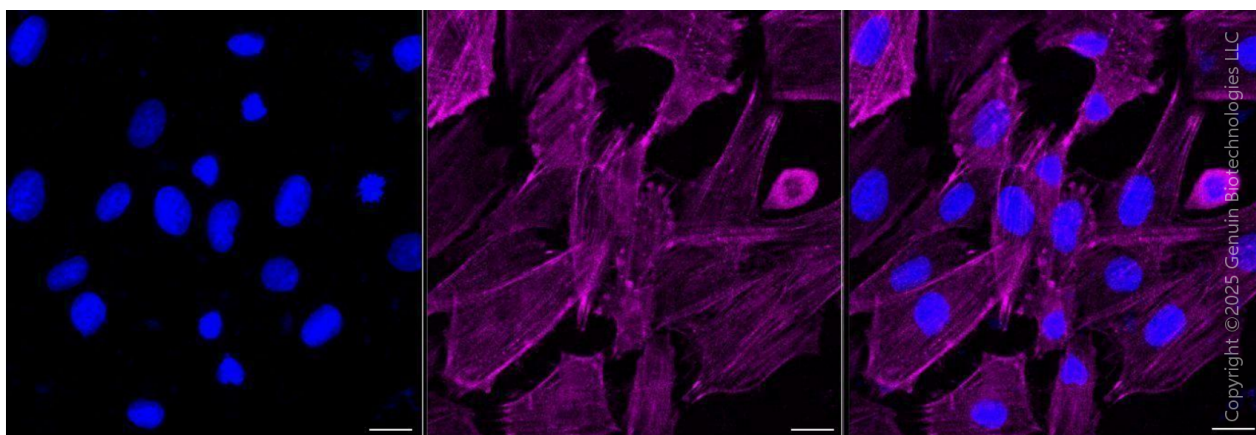
### SUPPORT

SUPPORT@GENUINBIOTECH.COM  
TEL: +1-540-855-7041

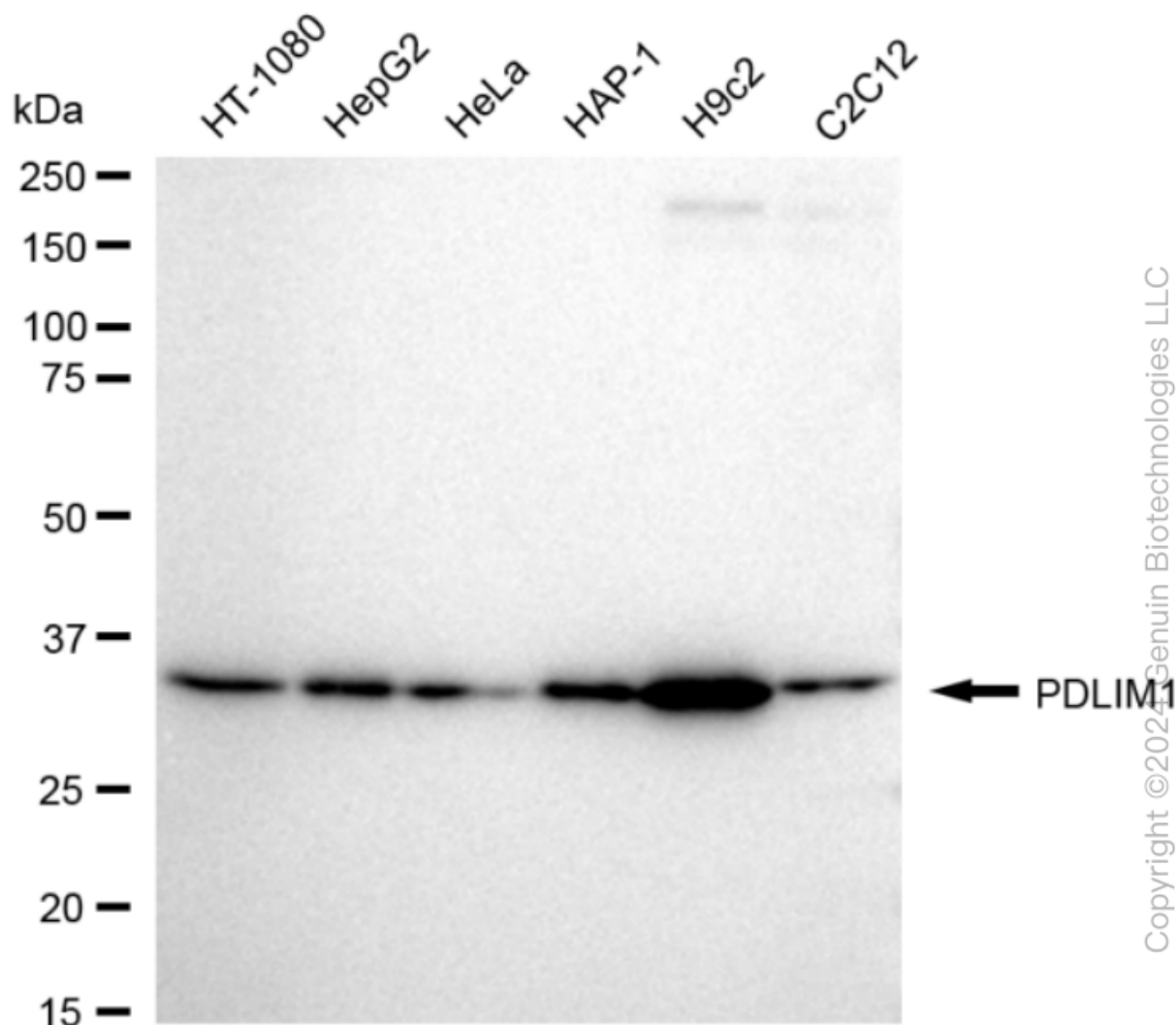
### ORDERS

SALES@GENUINBIOTECH.COM  
FAX: +1-540-855-7041

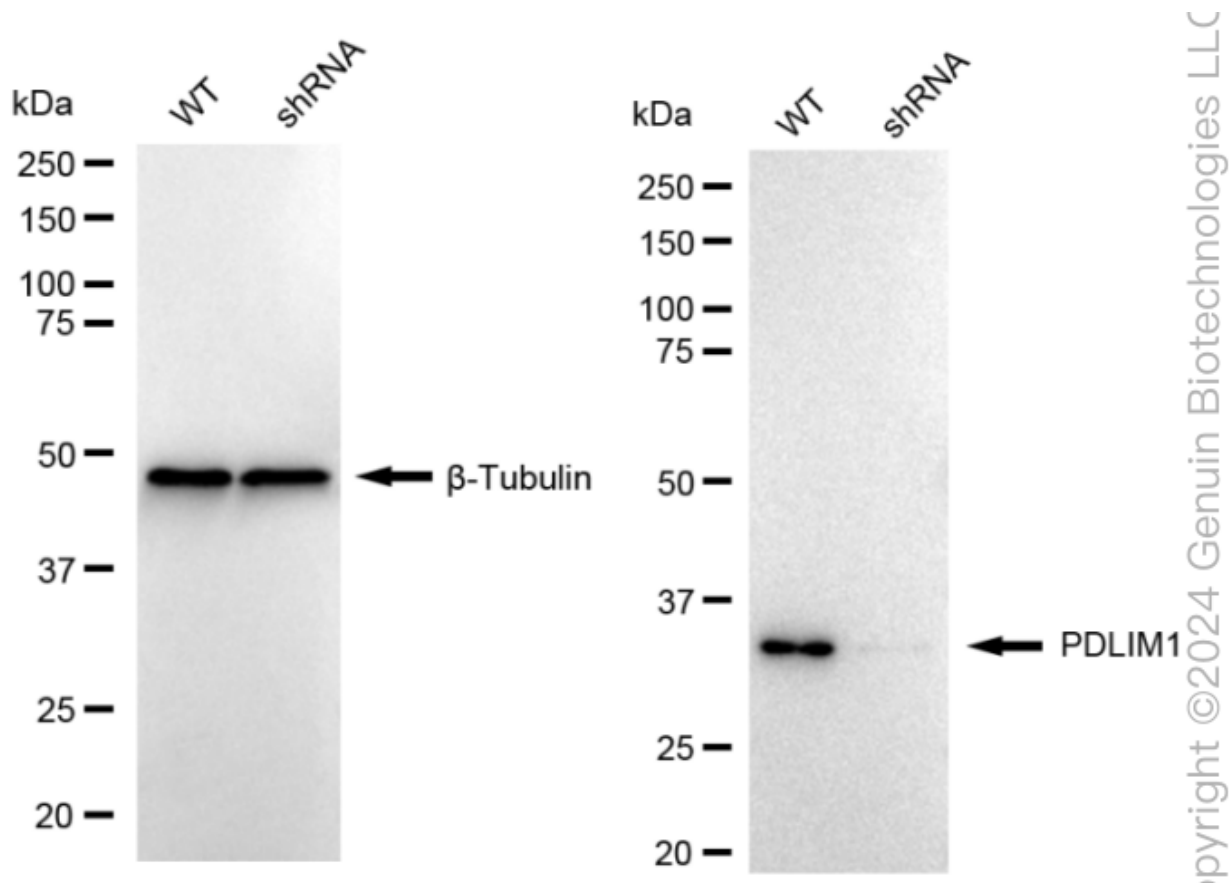
[WWW.GENUINBIOTECH.COM](http://WWW.GENUINBIOTECH.COM)



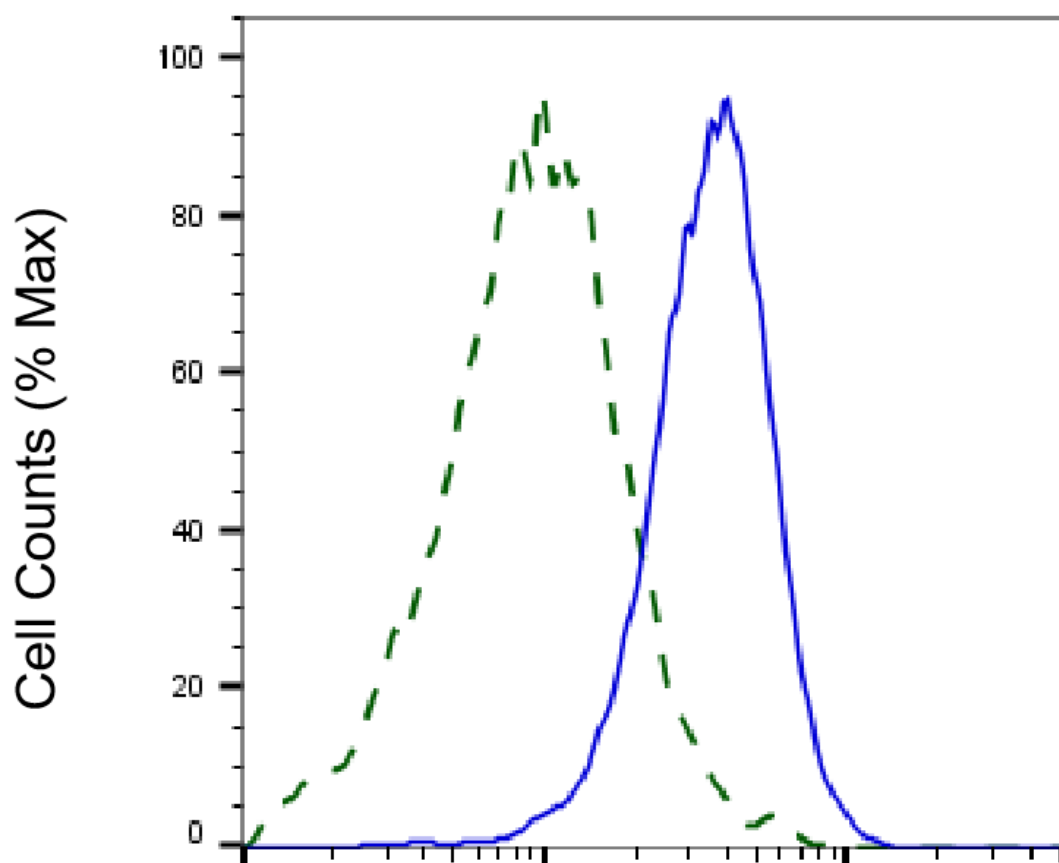
Immunocytochemical staining of H9c2 cells with anti-PDLIM1 antibody (Cat#62538, 1:1,000) . Nuclei were stained blue with DAPI; PDLIM1 was stained magenta with Alexa Fluor® 647. Images were taken using Leica stellaris 5. Protein abundance based on laser Intensity and smart gain: Medium. Scale bar, 20  $\mu$ m.



Western blotting analysis using anti-PDLIM1 antibody (Cat#62538). Total cell lysates (30 µg) from various cell lines were loaded and separated by SDS-PAGE. The blot was incubated with anti-PDLIM1 antibody (Cat#62538, 1:5,000) and HRP-conjugated goat anti-rabbit secondary antibody (Cat#201, 1:20,000) respectively. Image was developed using FeQ™ ECL Substrate Kit (Cat#226).



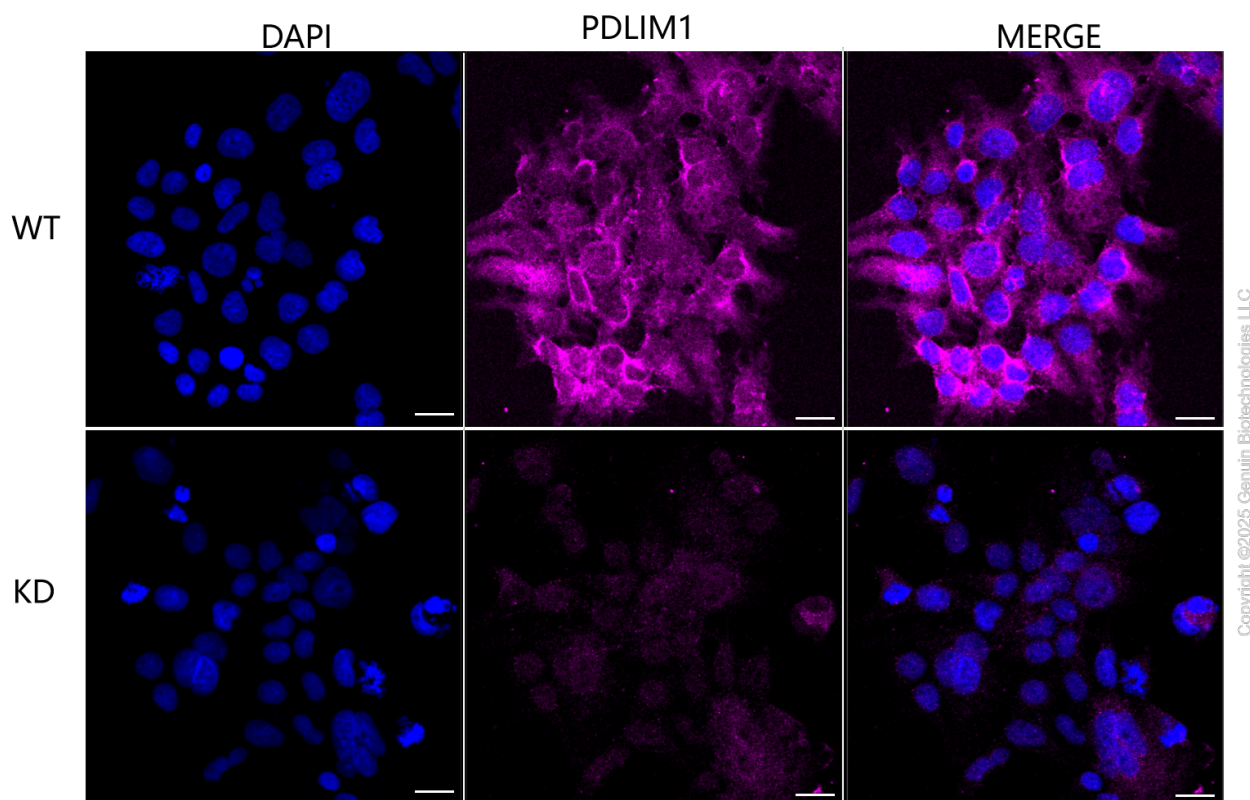
Western blotting analysis using anti-PDLIM1 antibody (Cat#62538). PDLIM1 expression in wild type (WT) and PDLIM1 shRNA knockdown (KD) HeLa cells with 20  $\mu$ g of total cell lysates.  $\beta$ -Tubulin serves as a loading control. The blot was incubated with anti-PDLIM1 antibody (Cat#62538, 1:5,000) and HRP-conjugated goat anti-rabbit secondary antibody (Cat#201, 1:20,000) respectively. Image was developed using NaQ™ ECL Substrate Kit (Cat#716).



Copyright ©2025 Genuin Biotechnologies LLC

## PDLIM1-Alexa Fluor® 647

Validation of PDLIM1 knockdown using flow cytometry. Wild-type(WT, Blue) and knockdown(KD, Green) HeLa cells were stained with anti-PDLIM1 antibody (Cat#62538, 1:2,000) and analyzed using BD flow cytometer.



Immunocytochemical staining of HeLa cells using anti-PDLIM1 antibody (Cat#62538, 1:1,000), Top panel: wild-type (WT); Bottom panel: PDLIM1 shRNA knockdown (KD). Nuclei were stained blue with DAPI; PDLIM1 was stained magenta with Alexa Fluor® 647. Scale bar, 20  $\mu$ m.