

KD-Validated Anti-PRKCSH Recombinant Rabbit Monoclonal Antibody



Catalog #: 62541

Aliases

PRKCSH; Protein Kinase C Substrate 80K-H; Glucosidase 2 Subunit Beta; VASAP-60; PKCSH; G19P1; GIIB; Protein Kinase C Substrate 60.1 KDa Protein Heavy Chain; Advanced Glycation End-Product Receptor 2; Glucosidase II Subunit Beta; Hepatocystin; GluIIbeta; GIIBeta; AGE-R2; 80K-H; PCLD; PLD1; Protein Kinase C Substrate, 80 Kda Protein; Glucosidase II Beta Subunit; Polycystic Liver Disease; AGE-Binding Receptor 2; 80K-H Protein; PCLD1

Background

Gene Name: PRKCSH

NCBI Gene Entry: [5589](#)

UniProt Entry: [P14314](#)

Application Information

Molecular Weight: Predicted, 59 kDa, observed, 80 kDa

Clonality: Rabbit monoclonal antibody

Clone ID: 24GB1325

Species Reactivity: Human

Applications Tested: Western blotting (WB), flow cytometry (FCM), immunocytochemistry (IC)

Immunogen

A synthesized peptide derived from human GLU2B

Isotype

Rabbit IgG

Storage Buffer

Supplied in PBS (pH 7.4) containing 50% glycerol, and 0.02% sodium azide.

Storage

Store at -20 °C for one year.

Recommended Dilutions

Western Blotting (WB): 1:1,000-1:5,000

Flow Cytometry (FCM): 1:2,000

Immunocytochemistry (IC): 1:100-1:1,000

SUPPORT

SUPPORT@GENUINBIOTECH.COM
TEL: +1-540-855-7041

ORDERS

SALES@GENUINBIOTECH.COM
FAX: +1-540-855-7041

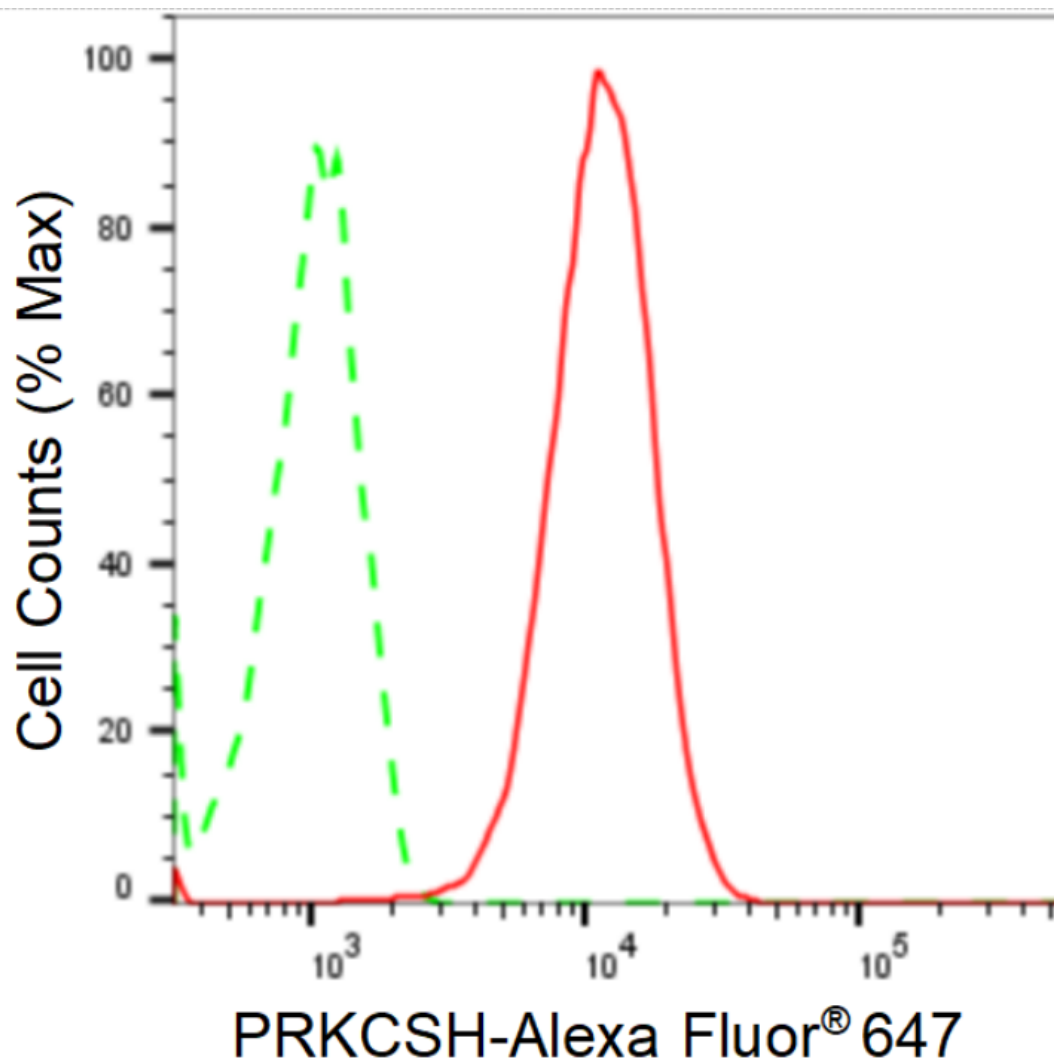
WWW.GENUINBIOTECH.COM

KD-Validated Anti-PRKCSH Recombinant Rabbit Monoclonal Antibody

PAGE 2

Note: This product is for research use only.

Validation Data



Copyright ©2024 Genuin Biotechnologies LLC

Flow cytometric analysis of PRKCSH expression in HeLa cells using anti-PRKCSH antibody (Cat#62541, 1:2,000). Green, isotype control; red, PRKCSH.

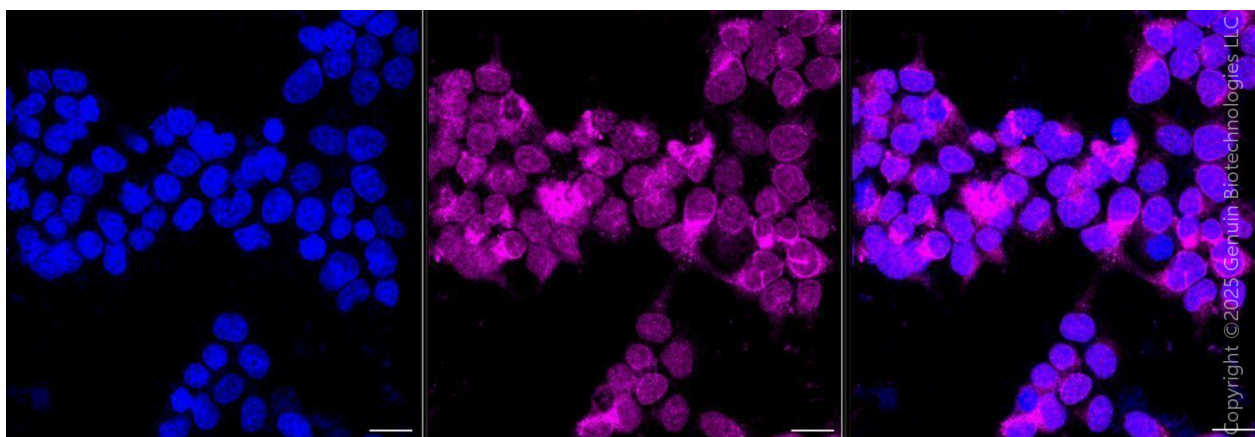
SUPPORT

SUPPORT@GENUINBIOTECH.COM
TEL: +1-540-855-7041

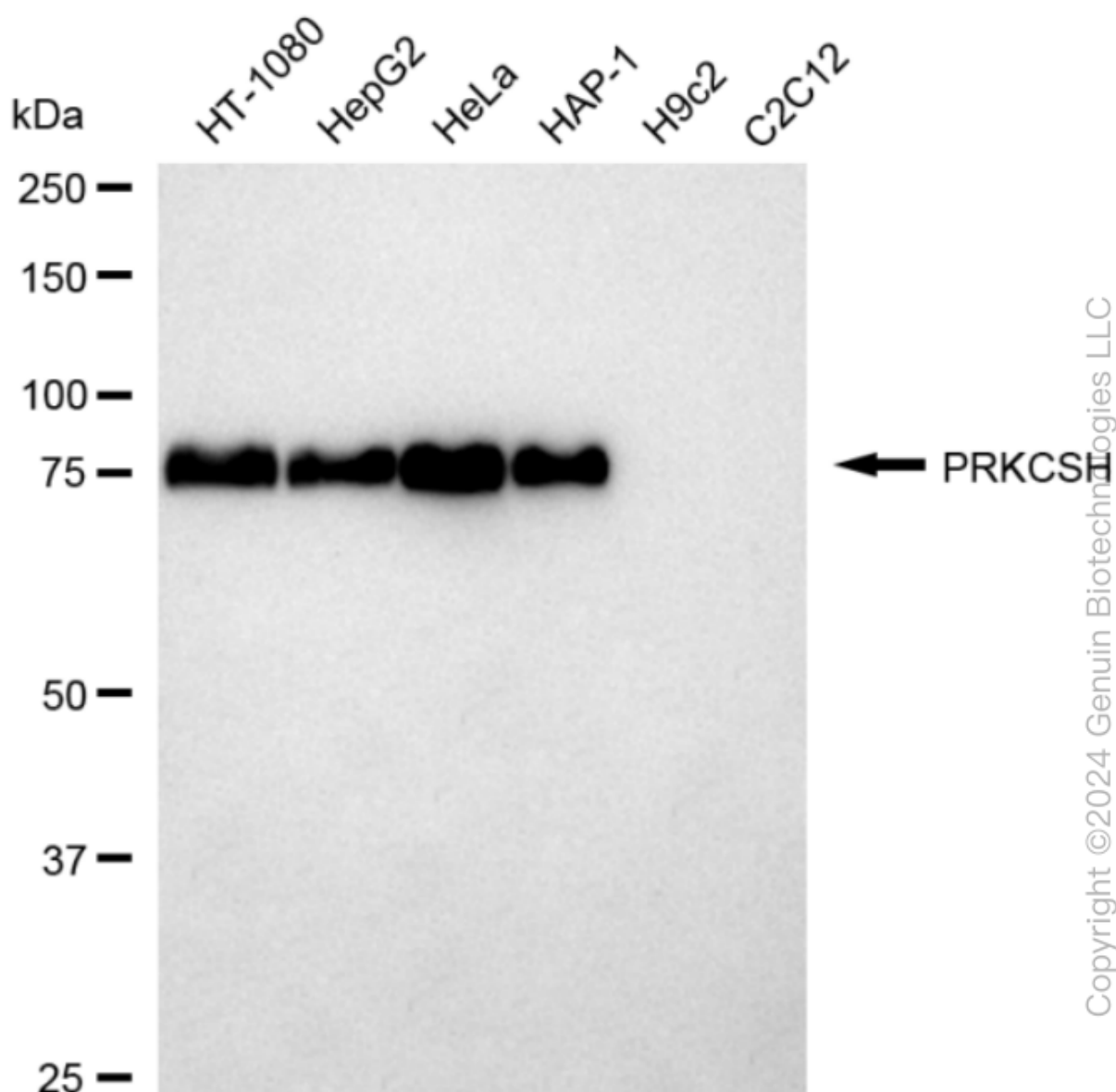
ORDERS

SALES@GENUINBIOTECH.COM
FAX: +1-540-855-7041

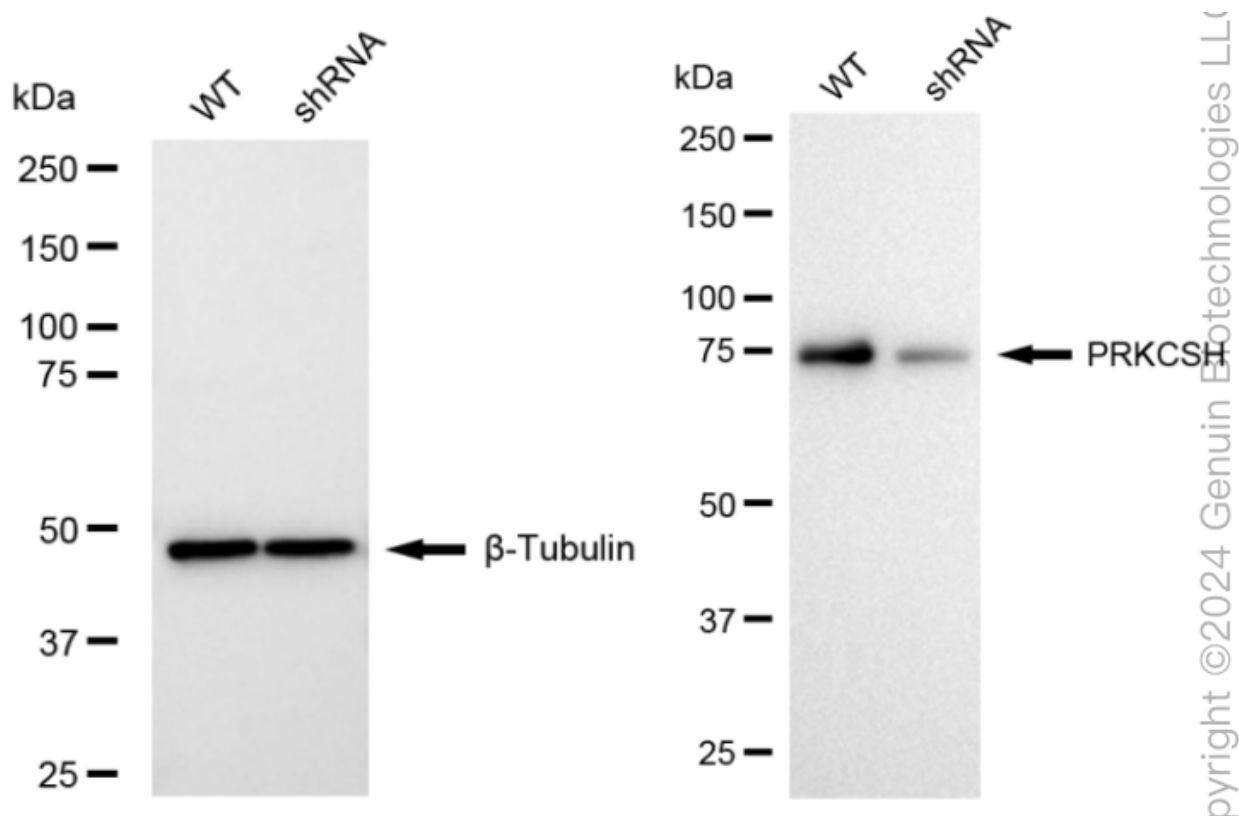
WWW.GENUINBIOTECH.COM



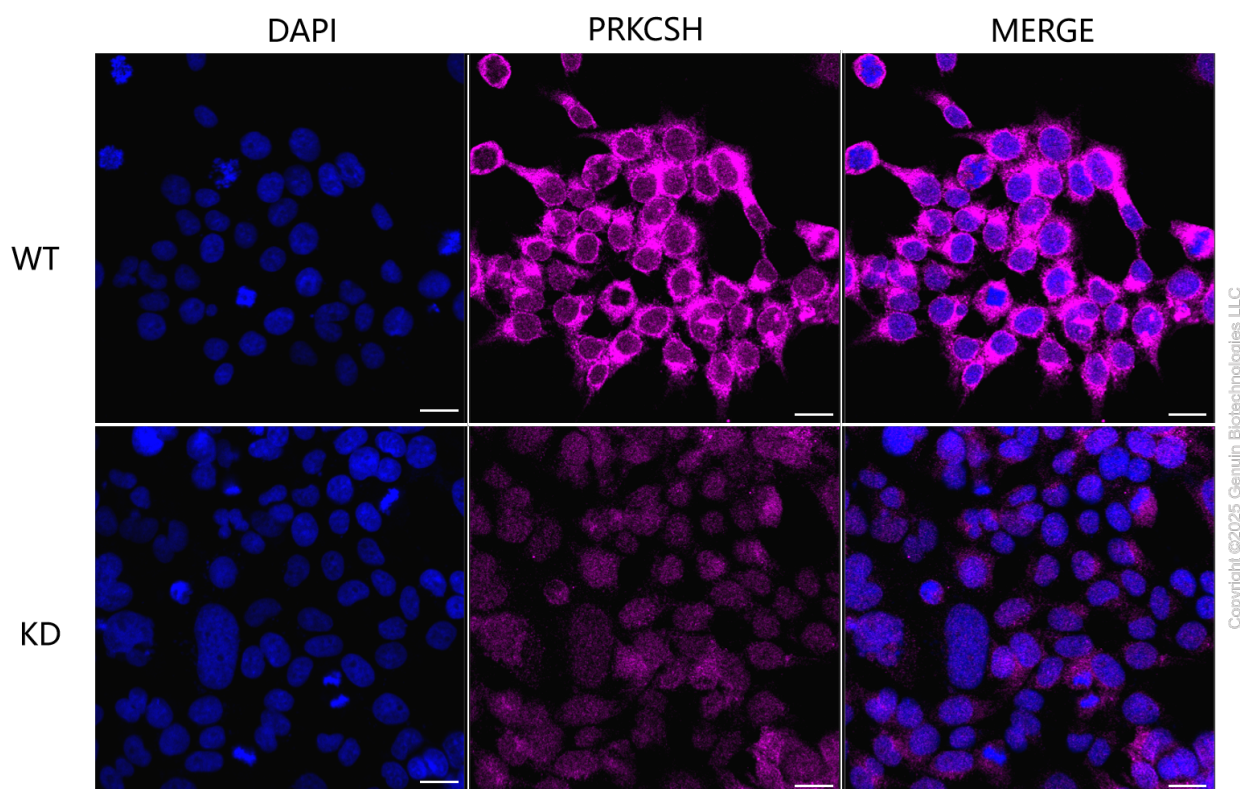
Immunocytochemical staining of HeLa cells using anti-PRKCSH antibody (Cat#62541, 1:1,000), Top panel: wild-type (WT); Bottom panel: PRKCSH shRNA knockdown (KD). Nuclei were stained blue with DAPI; PRKCSH was stained magenta with Alexa Fluor® 647. Scale bar, 20 μ m. Permeabilization: Triton.



Western blotting analysis using anti-PRKCSH antibody (Cat#62541). Total cell lysates (30 μ g) from various cell lines were loaded and separated by SDS-PAGE. The blot was incubated with anti-PRKCSH antibody (Cat#62541, 1:5,000) and HRP-conjugated goat anti-rabbit secondary antibody (Cat#201, 1:20,000) respectively. Image was developed using FeQ™ ECL Substrate Kit (Cat#226).



Western blotting analysis using anti-PRKCSH antibody (Cat#62541). PRKCSH expression in wild type (WT) and PRKCSH shRNA knockdown (KD) HeLa cells with 20 μ g of total cell lysates. β -Tubulin serves as a loading control. The blot was incubated with anti-PRKCSH antibody (Cat#62541, 1:5,000) and HRP-conjugated goat anti-rabbit secondary antibody (Cat#201, 1:20,000) respectively. Image was developed using NaQ™ ECL Substrate Kit (Cat#716).



Immunocytochemical staining of HeLa cells using anti-PRKCSH antibody (Cat#62541, 1:1,000), Top panel: wild-type (WT); Bottom panel: PRKCSH shRNA knockdown (KD). Nuclei were stained blue with DAPI; PRKCSH was stained magenta with Alexa Fluor® 647. Scale bar, 20 μ m. Permeabilization: Triton.