

KD-Validated Anti-Phospholipid Scramblase 3 Recombinant Rabbit Monoclonal Antibody



Catalog #: 62545

Aliases

PLSCR3; Phospholipid Scramblase 3; Ca(2+)-Dependent Phospholipid Scramblase 3; PL Scramblase 3

Background

Gene Name: PLSCR3

NCBI Gene Entry: [57048](#)

UniProt Entry: [Q9NRY6](#)

Application Information

Molecular Weight: Predicted, 32 kDa, observed, 32 kDa

Clonality: Rabbit monoclonal antibody

Clone ID: 24GB1345

Species Reactivity: Human, mouse, rat

Applications Tested: Western blotting (WB), flow cytometry (FCM), immunocytochemistry (IC)

Immunogen

A synthesized peptide derived from human PLSCR3

Isotype

Rabbit IgG

Storage Buffer

Supplied in PBS (pH 7.4) containing 50% glycerol, and 0.02% sodium azide.

Storage

Store at -20 °C for one year.

Recommended Dilutions

Western Blotting (WB): 1:1,000-1:5,000

Flow Cytometry (FCM): 1:2,000

Immunocytochemistry (IC): 1:100-1:1,000

Note: This product is for research use only.

Validation Data

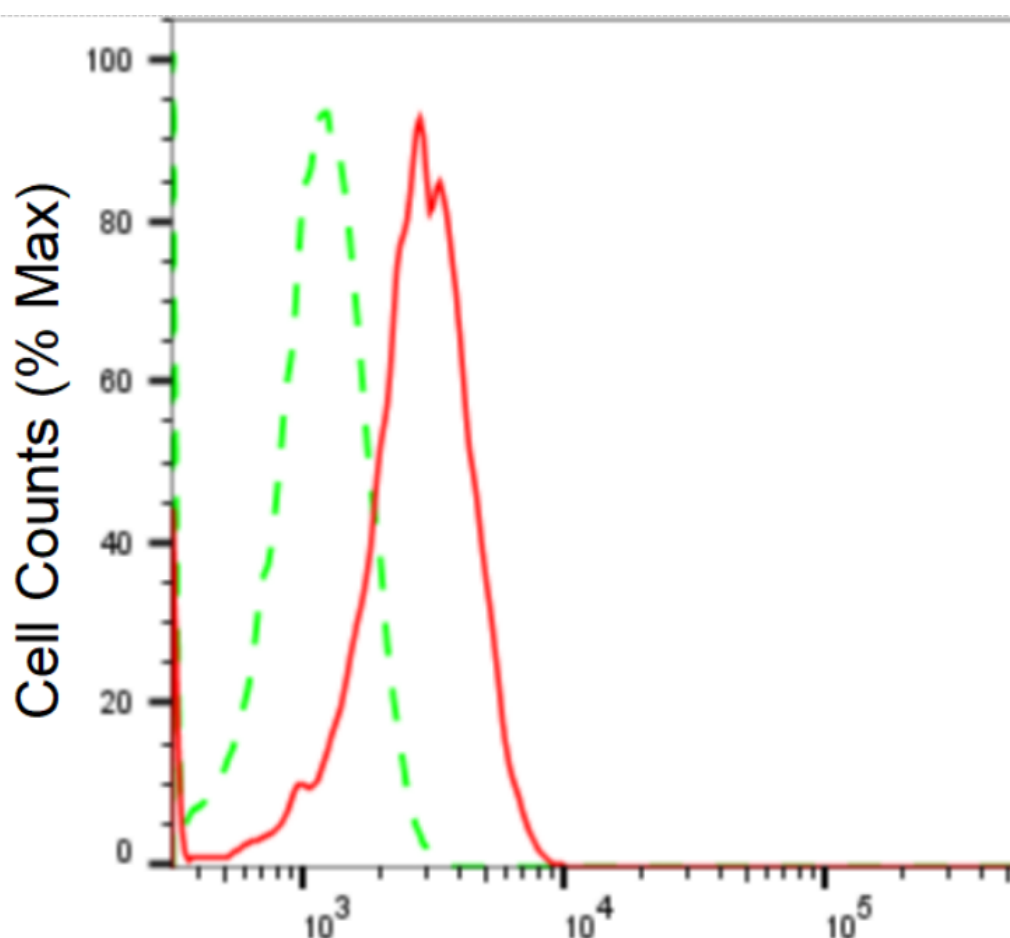
SUPPORT

SUPPORT@GENUINBIOTECH.COM
TEL: +1-540-855-7041

ORDERS

SALES@GENUINBIOTECH.COM
FAX: +1-540-855-7041

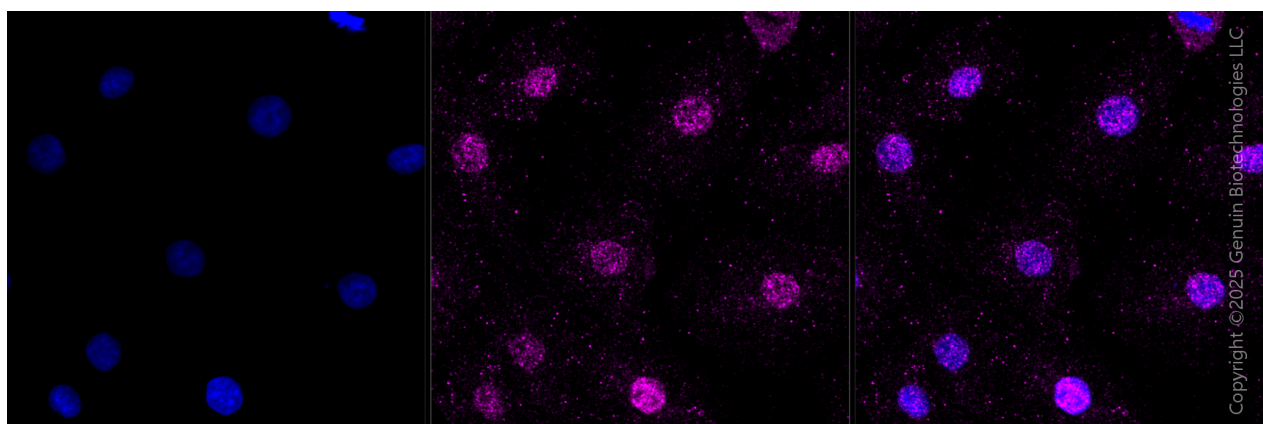
WWW.GENUINBIOTECH.COM



Copyright ©2024 Genuin Biotechnologies LLC

Phospholipid scramblase 3-Alexa Fluor® 647

Flow cytometric analysis of Phospholipid scramblase 3 expression in H9c2 cells using anti-Phospholipid scramblase 3 antibody (Cat#62545, 1:2,000). Green, isotype control; red, Phospholipid scramblase 3.



Copyright ©2025 Genuin Biotechnologies LLC

Immunocytochemical staining of H9C2 cells with anti-Phospholipid scramblase 3 antibody (Cat#62545, 1:1,000). Nuclei were stained blue with DAPI; Phospholipid scramblase 3 was

SUPPORT

SUPPORT@GENUINBIOTECH.COM
TEL: +1-540-855-7041

ORDERS

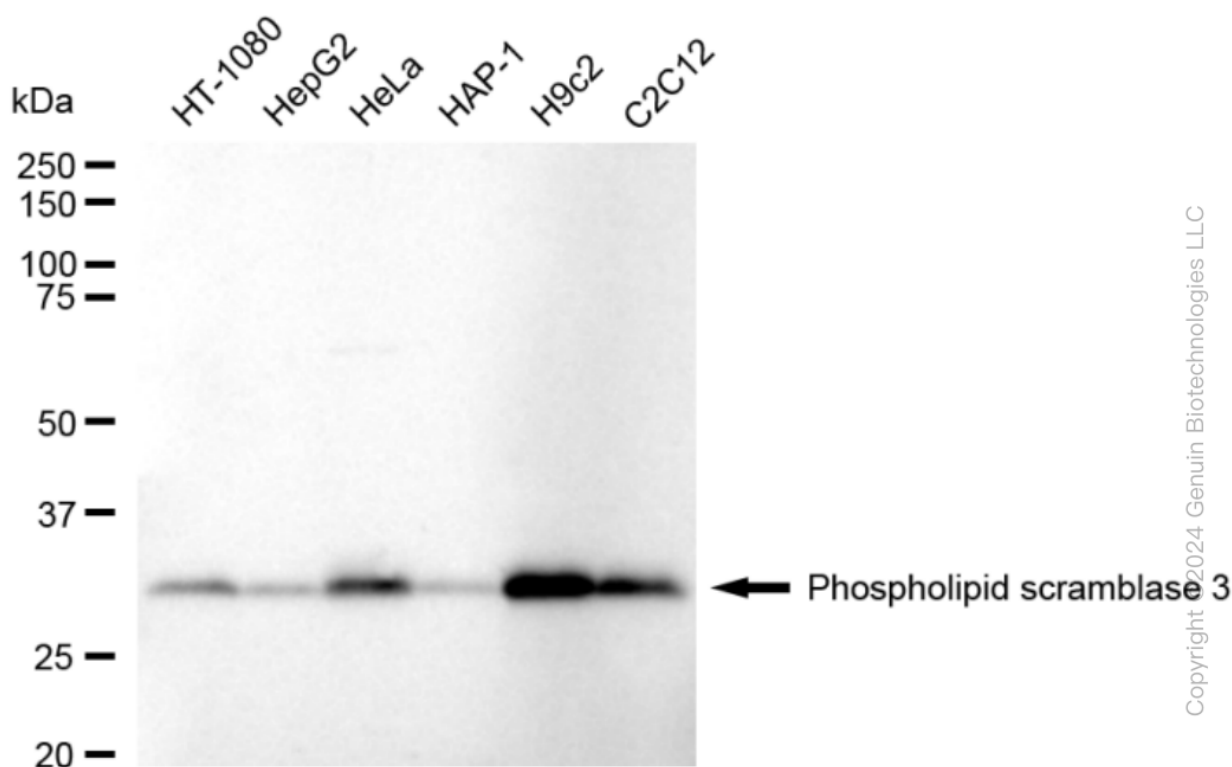
SALES@GENUINBIOTECH.COM
FAX: +1-540-855-7041

WWW.GENUINBIOTECH.COM

KD-Validated Anti-Phospholipid Scramblase 3 Recombinant Rabbit Monoclonal Antibody

PAGE 3

stained magenta with Alexa Fluor® 647. Images were taken using Leica stellaris 5. Protein abundance based on laser Intensity and smart gain □ Medium. Scale bar, 20 μm.



Western blotting analysis using anti-Phospholipid Scramblase 3 antibody (Cat#62545). Total cell lysates (30 μg) from various cell lines were loaded and separated by SDS-PAGE. The blot was incubated with anti-Phospholipid Scramblase 3 antibody (Cat#62545, 1:5,000) and HRP-conjugated goat anti-rabbit secondary antibody (Cat#201, 1:20,000) respectively. Image was developed using FeQ™ ECL Substrate Kit (Cat#226).

SUPPORT

SUPPORT@GENUINBIOTECH.COM
TEL: +1-540-855-7041

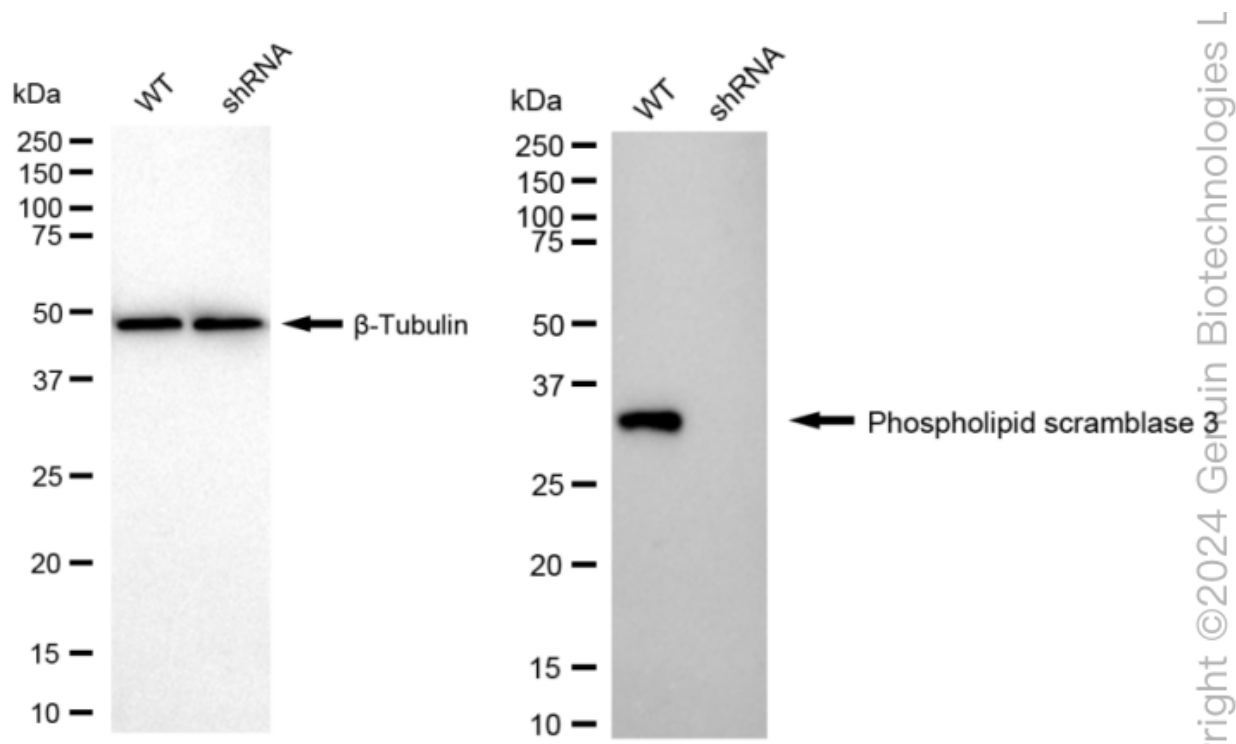
ORDERS

SALES@GENUINBIOTECH.COM
FAX: +1-540-855-7041

WWW.GENUINBIOTECH.COM

KD-Validated Anti-Phospholipid Scramblase 3 Recombinant Rabbit Monoclonal Antibody

PAGE 4



Western blotting analysis using anti-Phospholipid Scramblase 3 antibody (Cat#62545). Phospholipid Scramblase 3 expression in wild type (WT) and Phospholipid Scramblase 3 shRNA knockdown (KD) HeLa cells with 20 μ g of total cell lysates. β -Tubulin serves as a loading control. The blot was incubated with anti-Phospholipid Scramblase 3 antibody (Cat#62545, 1:5,000) and HRP-conjugated goat anti-rabbit secondary antibody (Cat#201, 1:20,000) respectively. Image was developed using NaQ™ ECL Substrate Kit (Cat#716).

SUPPORT

SUPPORT@GENUINBIOTECH.COM
TEL: +1-540-855-7041

ORDERS

SALES@GENUINBIOTECH.COM
FAX: +1-540-855-7041

WWW.GENUINBIOTECH.COM