

# KD-Validated Anti-Pancreatic And Duodenal Homeobox 1 Recombinant Rabbit Monoclonal



**Catalog #: 62554**

## Aliases

PDX1; Pancreatic And Duodenal Homeobox 1; IDX-1; STF-1; PDX-1; IUF-1; GSF; Islet/Duodenum Homeobox-1; Insulin Upstream Factor 1; Glucose-Sensitive Factor; MODY4; IPF1; Insulin Promoter Factor 1, Homeodomain Transcription Factor; Somatostatin-Transactivating Factor 1; Pancreas/Duodenum Homeobox Protein 1; Somatostatin Transcription Factor 1; Pancreatic-Duodenal Homeobox Factor 1; Insulin Promoter Factor 1; PAGEN1; IUF1; STF1

## Background

Gene Name: PDX1

NCBI Gene Entry: [3651](#)

UniProt Entry: [P52945](#)

## Application Information

Molecular Weight: Predicted, 31 kDa, observed, 42 kDa

Clonality: Rabbit monoclonal antibody

Clone ID: 24GB1380

Species Reactivity: Human, rat

Applications Tested: Western blotting (WB), flow cytometry (FCM), immunocytochemistry (IC)

## Immunogen

A synthesized peptide derived from human PDX1

## Isotype

Rabbit IgG

## Storage Buffer

Supplied in PBS (pH 7.4) containing 50% glycerol, and 0.02% sodium azide.

## Storage

Store at -20 °C for one year.

## Recommended Dilutions

Western Blotting (WB): 1:1,000-1:5,000

Flow Cytometry (FCM): 1:2,000

Immunocytochemistry (IC): 1:100-1:1,000

---

### SUPPORT

SUPPORT@GENUINBIOTECH.COM  
TEL: +1-540-855-7041

### ORDERS

SALES@GENUINBIOTECH.COM  
FAX: +1-540-855-7041

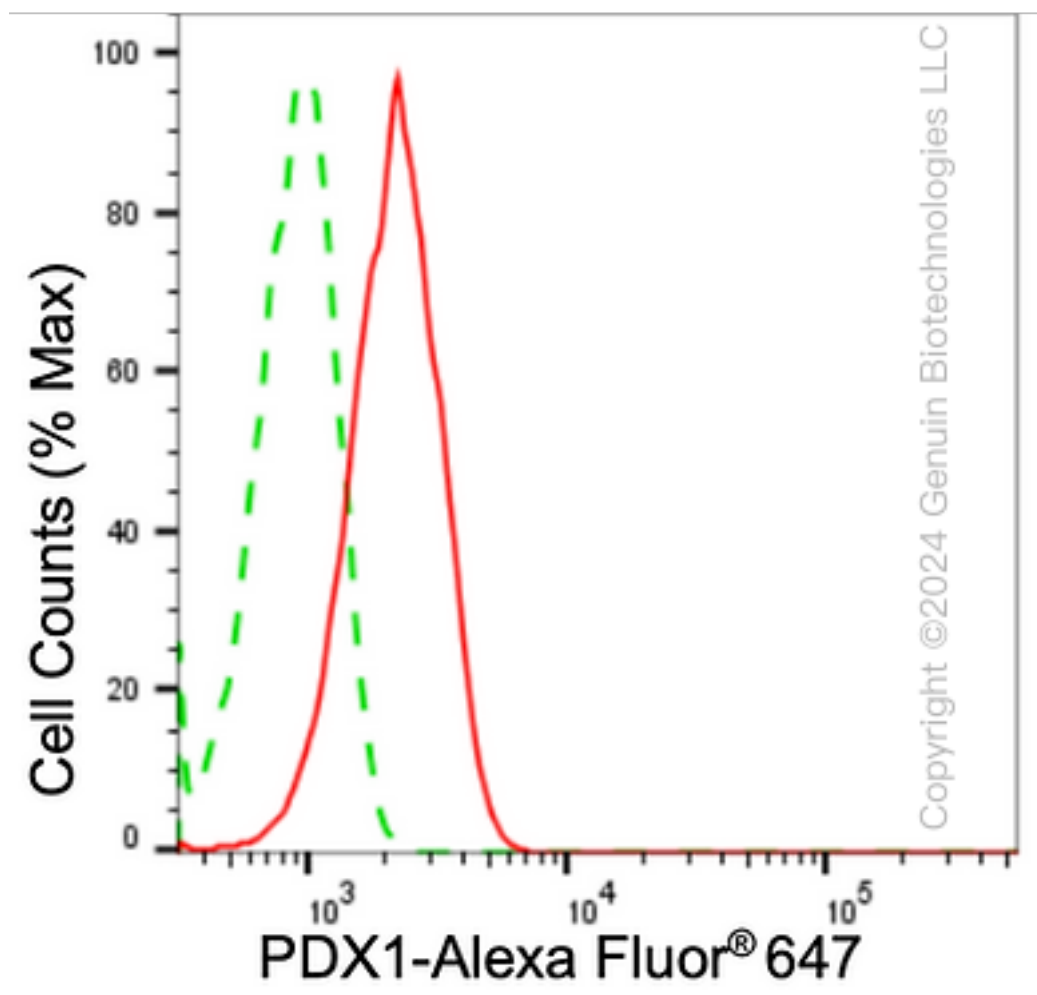
[WWW.GENUINBIOTECH.COM](http://WWW.GENUINBIOTECH.COM)

# KD-Validated Anti-Pancreatic And Duodenal Homeobox 1 Recombinant Rabbit Monoclonal

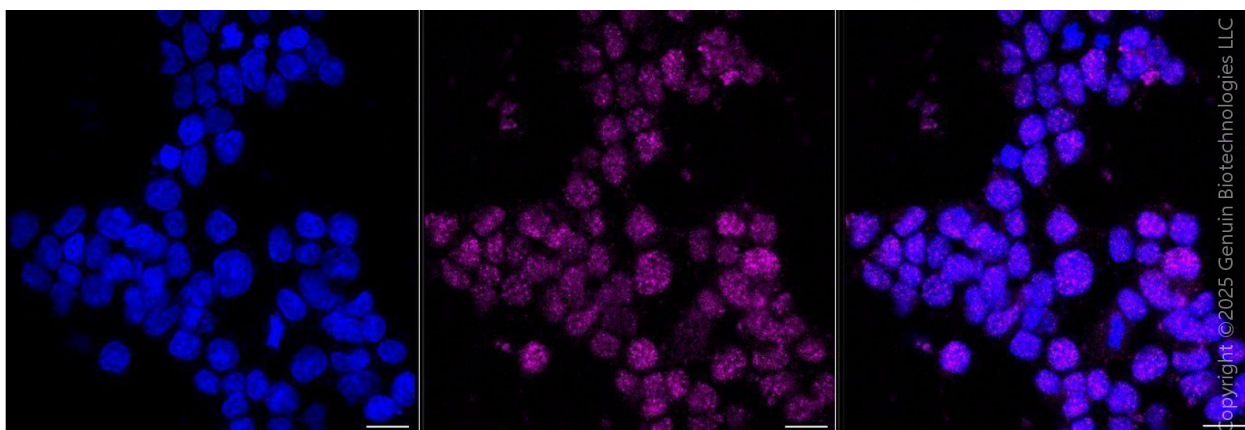
PAGE 2

**Note:** This product is for research use only.

## Validation Data



Flow cytometric analysis of PDX1 expression in HeLa cells using anti-PDX1 antibody (Cat#62554, 1:2,000). Green, isotype control; red, PDX1.



### SUPPORT

SUPPORT@GENUINBIOTECH.COM  
TEL: +1-540-855-7041

### ORDERS

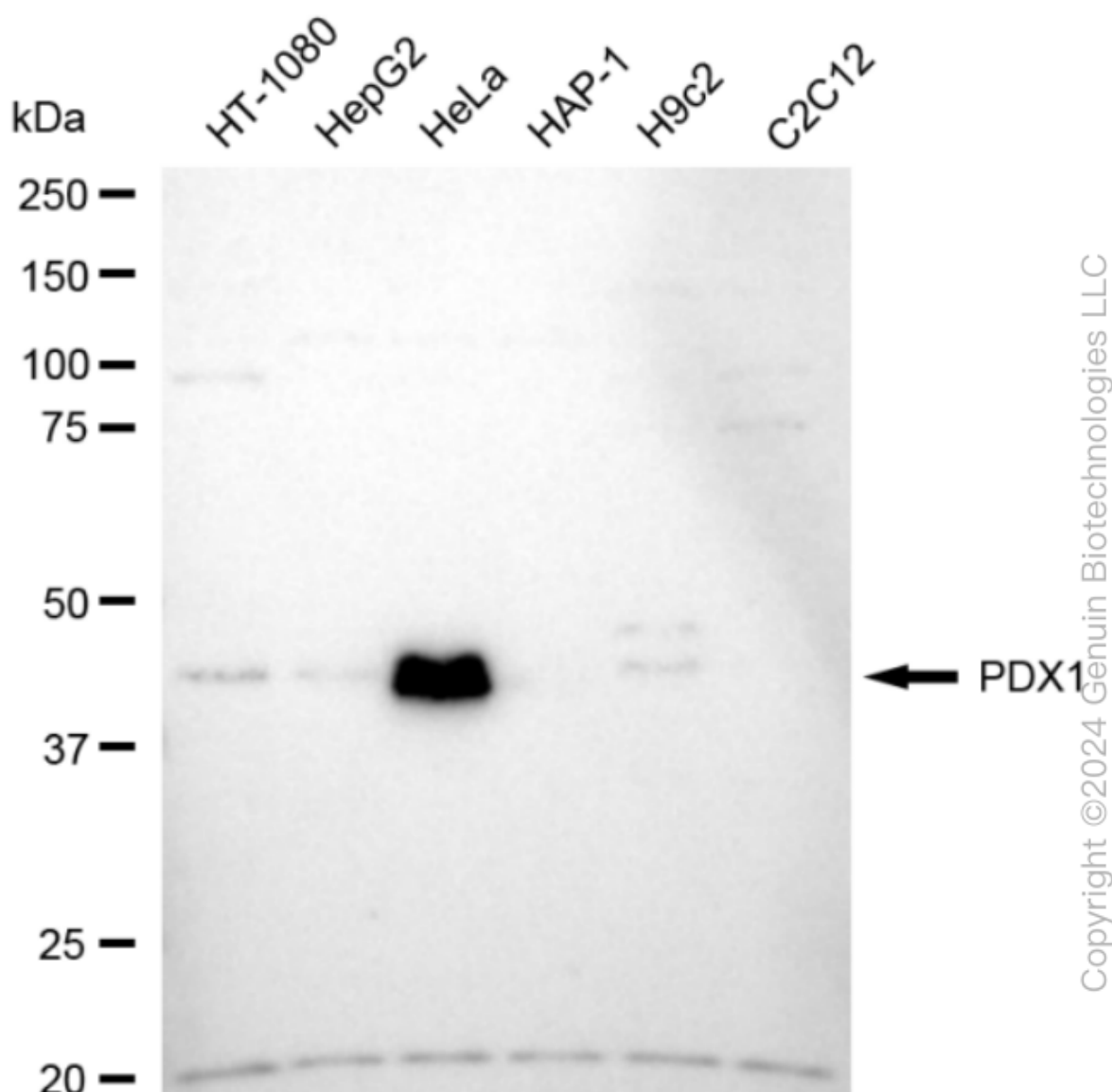
SALES@GENUINBIOTECH.COM  
FAX: +1-540-855-7041

[WWW.GENUINBIOTECH.COM](http://WWW.GENUINBIOTECH.COM)

## KD-Validated Anti-Pancreatic And Duodenal Homeobox 1 Recombinant Rabbit Monoclonal

PAGE 3

Immunocytochemical staining of HeLa cells with anti-PDX1 antibody (Cat#62554, 1:1,000). Nuclei were stained blue with DAPI; PDX1 was stained magenta with Alexa Fluor® 647. Images were taken using Leica stellaris 5. Protein abundance based on laser Intensity and smart gain: Medium. Scale bar, 20 µm.



Western blotting analysis using anti-PDX1 antibody (Cat#62554). Total cell lysates (30 µg) from various cell lines were loaded and separated by SDS-PAGE. The blot was incubated with anti-PDX1 antibody (Cat#62554, 1:5,000) and HRP-conjugated goat anti-rabbit secondary antibody (Cat#201, 1:20,000) respectively. Image was developed using FeQ™ ECL Substrate Kit (Cat#226).

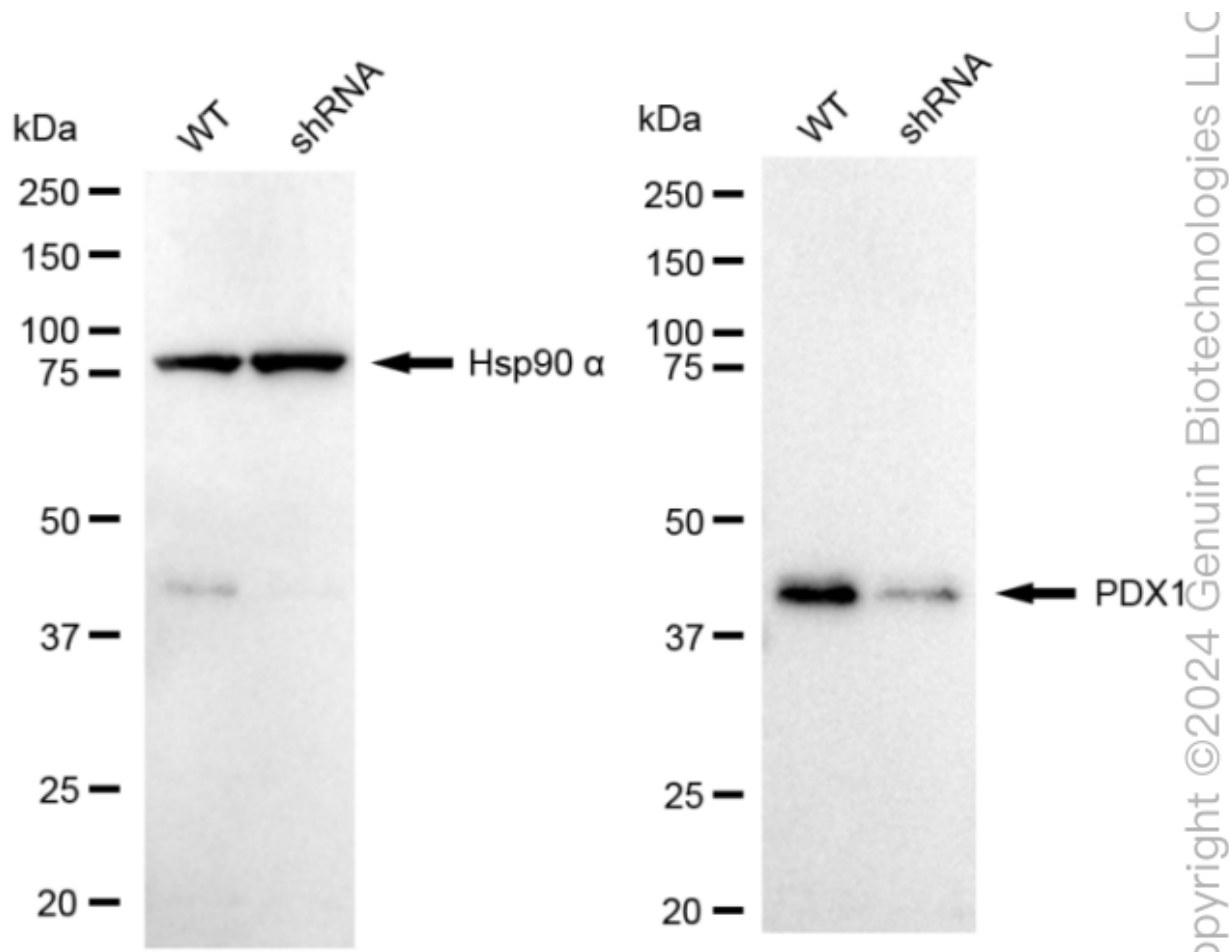
### SUPPORT

SUPPORT@GENUINBIOTECH.COM  
TEL: +1-540-855-7041

### ORDERS

SALES@GENUINBIOTECH.COM  
FAX: +1-540-855-7041

WWW.GENUINBIOTECH.COM



Western blotting analysis using anti-PDX1 antibody (Cat#62554). PDX1 expression in wild type (WT) and PDX1 shRNA knockdown (KD) HeLa cells with 20 µg of total cell lysates. Hsp90 α serves as a loading control. The blot was incubated with anti-PDX1 antibody (Cat#62554, 1:5,000) and HRP-conjugated goat anti-rabbit secondary antibody (Cat#201, 1:20,000) respectively. Image was developed using NaQ™ ECL Substrate Kit (Cat#716).