

# KD-Validated Anti-RAD21 Cohesin Complex Component Recombinant Rabbit Monoclonal



**Catalog #: 62556**

## Aliases

RAD21; RAD21 Cohesin Complex Component; HHR21; SCC1; KIAA0078; Double-Strand-Break Repair Protein Rad21 Homolog; Sister Chromatid Cohesion 1; Nuclear Matrix Protein 1; SCC1 Homolog; Kleisin; NXP-1; HR21; NXP1; Protein Involved In DNA Double-Strand Break Repair; RAD21 (S. Pombe) Homolog; RAD21 Homolog (S. Pombe); RAD21 Homolog; HRAD21; CDLS4; MCD1; MGS

## Background

Gene Name: RAD21  
NCBI Gene Entry: [5885](#)  
UniProt Entry: [O60216](#)

## Application Information

Molecular Weight: Predicted, 72 kDa, observed, 130 kDa  
Clonality: Rabbit monoclonal antibody  
Clone ID: 24GB1390  
Species Reactivity: Human, mouse, rat  
Applications Tested: Western blotting (WB), flow cytometry (FCM), immunocytochemistry (IC)

## Immunogen

A synthesized peptide derived from human RAD21

## Isotype

Rabbit IgG

## Storage Buffer

Supplied in PBS (pH 7.4) containing 50% glycerol, and 0.02% sodium azide.

## Storage

Store at -20 °C for one year.

## Recommended Dilutions

Western Blotting (WB): 1:1,000-1:5,000  
Flow Cytometry (FCM): 1:2,000  
Immunocytochemistry (IC): 1:100-1:1,000

---

### SUPPORT

SUPPORT@GENUINBIOTECH.COM  
TEL: +1-540-855-7041

### ORDERS

SALES@GENUINBIOTECH.COM  
FAX: +1-540-855-7041

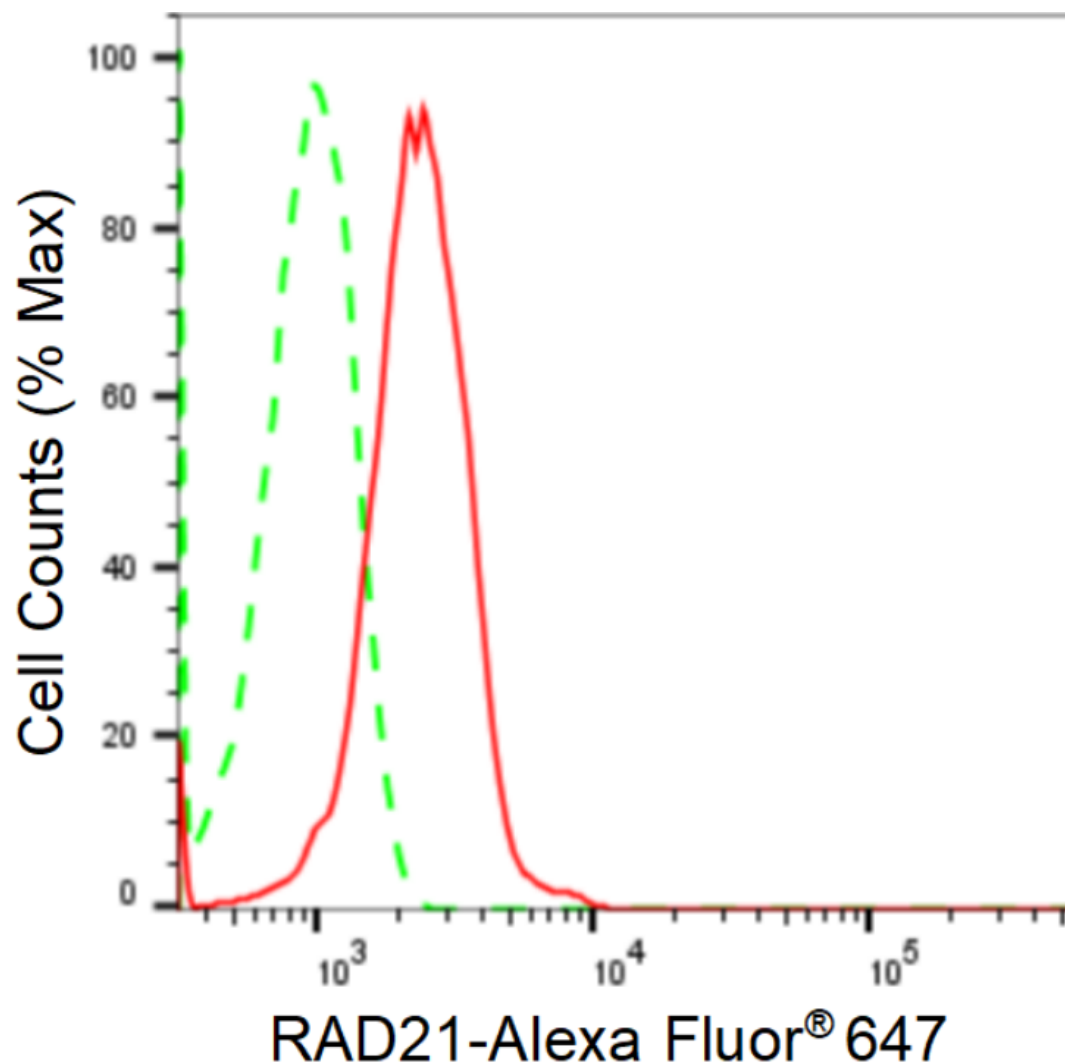
[WWW.GENUINBIOTECH.COM](http://WWW.GENUINBIOTECH.COM)

# KD-Validated Anti-RAD21 Cohesin Complex Component Recombinant Rabbit Monoclonal

PAGE 2

**Note:** This product is for research use only.

## Validation Data



Copyright ©2024 Genuin Biotechnologies LLC

Flow cytometric analysis of RAD21 expression in HepG2 cells using anti-RAD21 antibody (Cat#62556, 1:2,000). Green, isotype control; red, RAD21.

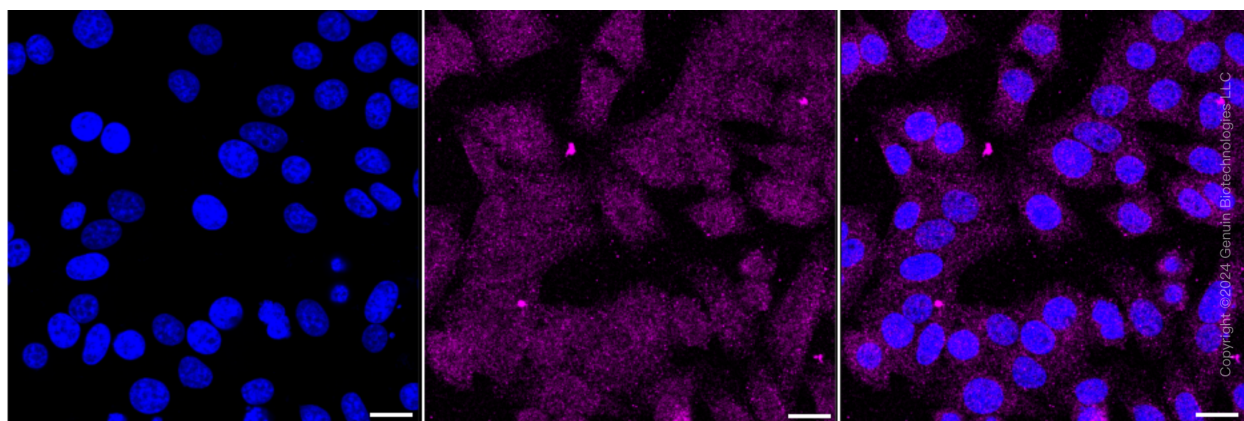
### SUPPORT

SUPPORT@GENUINBIOTECH.COM  
TEL: +1-540-855-7041

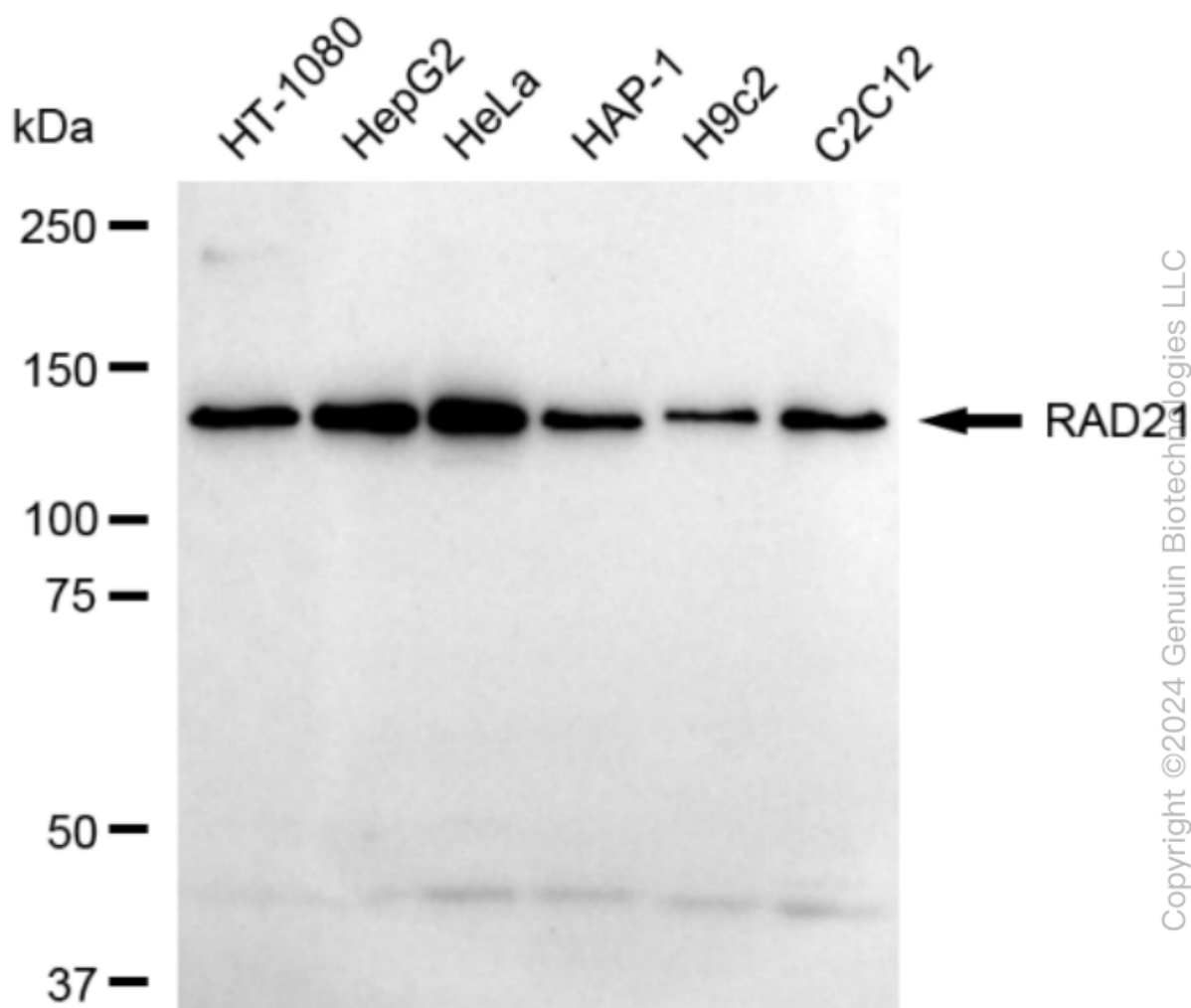
### ORDERS

SALES@GENUINBIOTECH.COM  
FAX: +1-540-855-7041

[WWW.GENUINBIOTECH.COM](http://WWW.GENUINBIOTECH.COM)



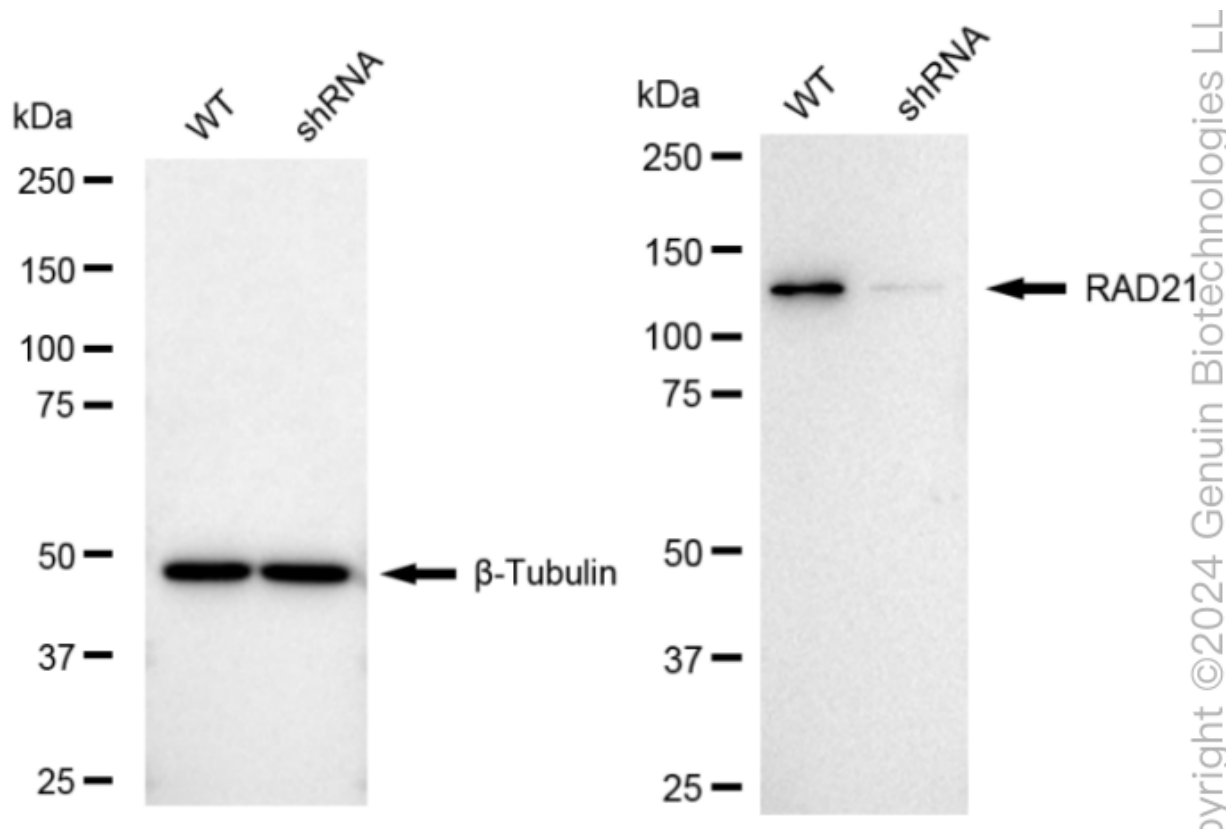
Immunocytochemical staining of HepG2 cells with anti-RAD21 antibody (Cat#62556, 1:1,000). Nuclei were stained blue with DAPI; RAD21 was stained magenta with Alexa Fluor® 647. Images were taken using Leica stellaris 5. Protein abundance based on laser Intensity and smart gain: Medium. Scale bar: 20  $\mu$ m.



## KD-Validated Anti-RAD21 Cohesin Complex Component Recombinant Rabbit Monoclonal

PAGE 4

Western blotting analysis using anti-RAD21 antibody (Cat#62556). Total cell lysates (30 µg) from various cell lines were loaded and separated by SDS-PAGE. The blot was incubated with anti-RAD21 antibody (Cat#62556, 1:5,000) and HRP-conjugated goat anti-rabbit secondary antibody (Cat#201, 1:20,000) respectively. Image was developed using FeQ™ ECL Substrate Kit (Cat#226).



Western blotting analysis using anti-RAD21 antibody (Cat#62556). RAD21 expression in wild type (WT) and RAD21 shRNA knockdown (KD) HeLa cells with 20 µg of total cell lysates.  $\beta$ -Tubulin serves as a loading control. The blot was incubated with anti-RAD21 antibody (Cat#62556, 1:5,000) and HRP-conjugated goat anti-rabbit secondary antibody (Cat#201, 1:20,000) respectively. Image was developed using NaQ™ ECL Substrate Kit (Cat#716).

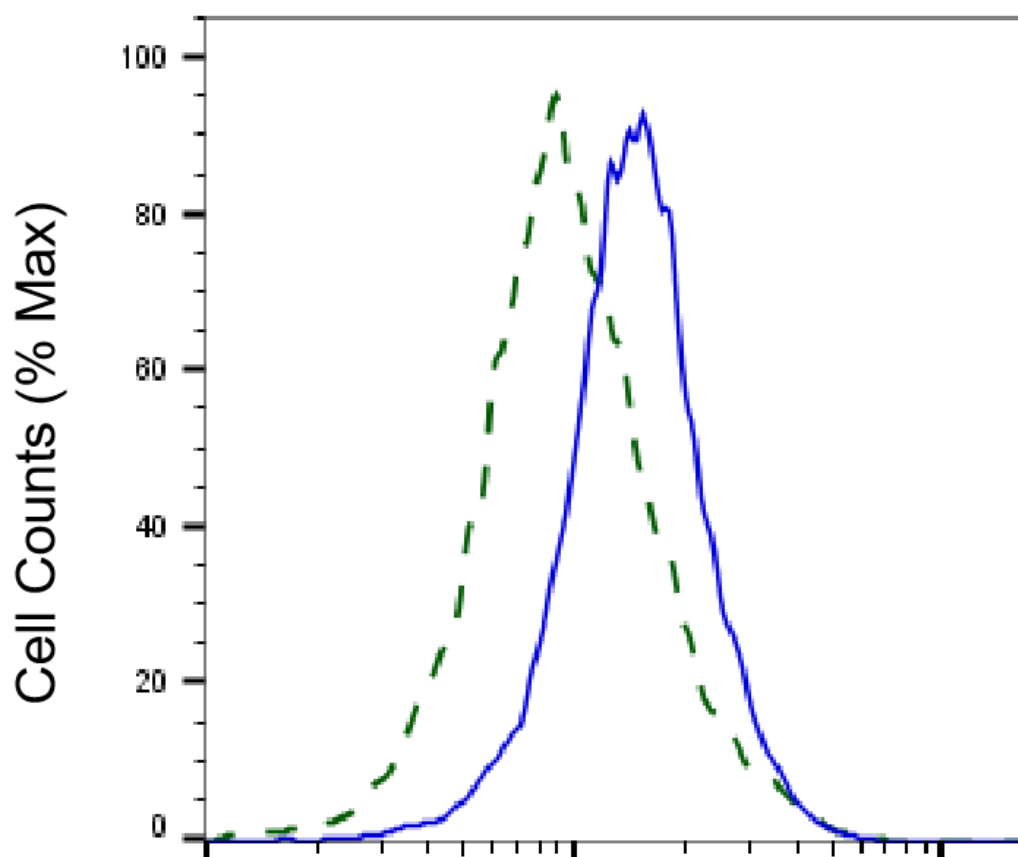
### SUPPORT

SUPPORT@GENUINBIOTECH.COM  
TEL: +1-540-855-7041

### ORDERS

SALES@GENUINBIOTECH.COM  
FAX: +1-540-855-7041

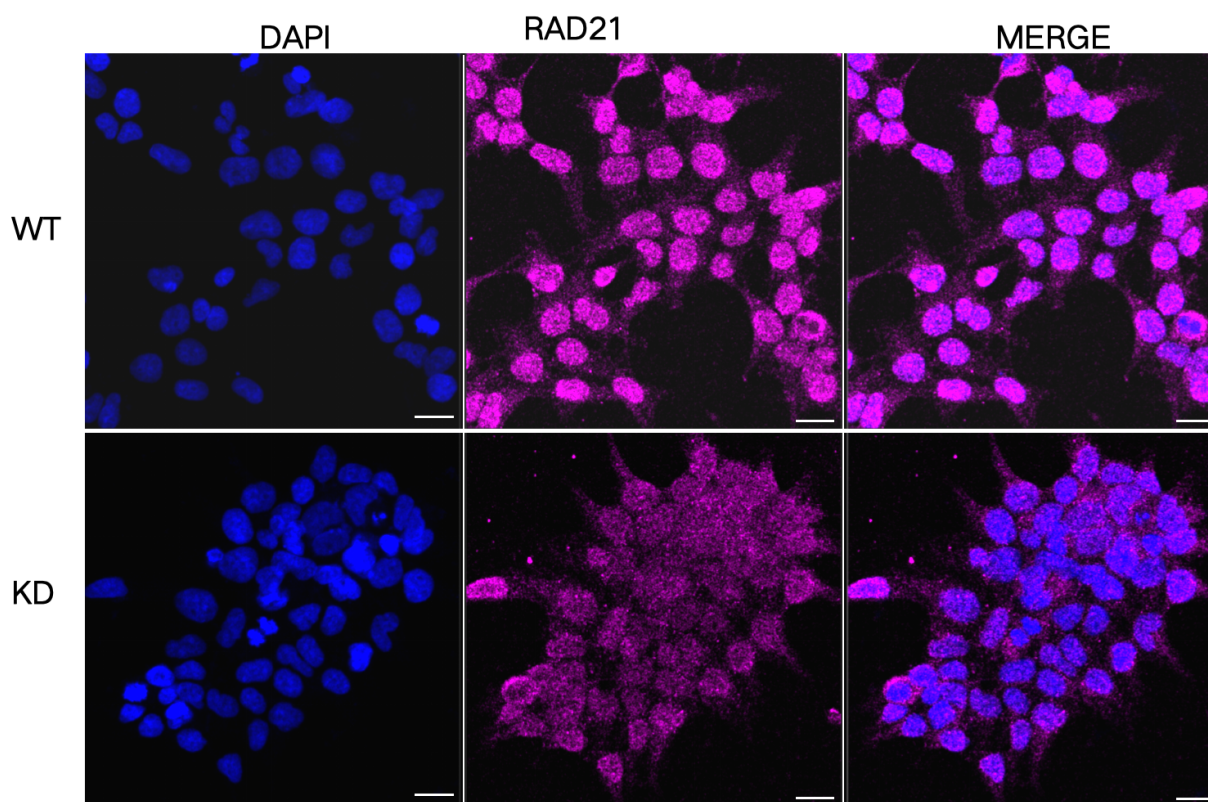
WWW.GENUINBIOTECH.COM



## RAD21-Alexa Fluor® 647

Validation of RAD21 knockdown using flow cytometry. Wild-type(WT, Blue) and knockdown(KD, Green) HeLa cells were stained with anti-RAD21 antibody (Cat#62556, 1:2,000) and analyzed using BD flow cytometer.

Copyright ©2025 Genuin Biotechnologies LLC



Immunocytochemical staining of HeLa cells using anti-RAD21 antibody (Cat#62556, 1:1,000), Top panel: wild-type (WT); Bottom panel: RAD21 shRNA knockdown (KD). Nuclei were stained blue with DAPI; RAD21 was stained magenta with Alexa Fluor® 647. Scale bar, 20  $\mu$ m.