

# KD-Validated Anti-SCARB1 Recombinant Rabbit Monoclonal Antibody



**Catalog #: 62558**

## Aliases

SCARB1; Scavenger Receptor Class B Member 1; CLA-1; SR-BI; SRB1; CLA1; CD36L1; CD36 Antigen (Collagen Type I Receptor, Thrombospondin Receptor)-Like 1; CD36 And LIMPII Analogous 1; Collagen Type I Receptor, Thrombospondin Receptor-Like 1; Scavenger Receptor Class B, Member 1; Scavenger Receptor Class B Type III; CD36 Antigen-Like 1; CD36 Antigen; HDLQTL6; HDLCQ6

## Background

Gene Name: SCARB1

NCBI Gene Entry: [949](#)

UniProt Entry: [Q8WTV0](#)

## Application Information

Molecular Weight: Predicted, 61 kDa, observed, 75 kDa

Clonality: Rabbit monoclonal antibody

Clone ID: 24GB1395

Species Reactivity: Human, rat

Applications Tested: Western blotting (WB), flow cytometry (FCM), immunocytochemistry (IC)

## Immunogen

A synthesized peptide derived from human Scavenging Receptor SR-BI

## Isotype

Rabbit IgG

## Storage Buffer

Supplied in PBS (pH 7.4) containing 50% glycerol, and 0.02% sodium azide.

## Storage

Store at -20 °C for one year.

## Recommended Dilutions

Western Blotting (WB): 1:1,000-1:5,000

Flow Cytometry (FCM): 1:2,000

Immunocytochemistry (IC): 1:100-1:1,000

---

### SUPPORT

SUPPORT@GENUINBIOTECH.COM  
TEL: +1-540-855-7041

### ORDERS

SALES@GENUINBIOTECH.COM  
FAX: +1-540-855-7041

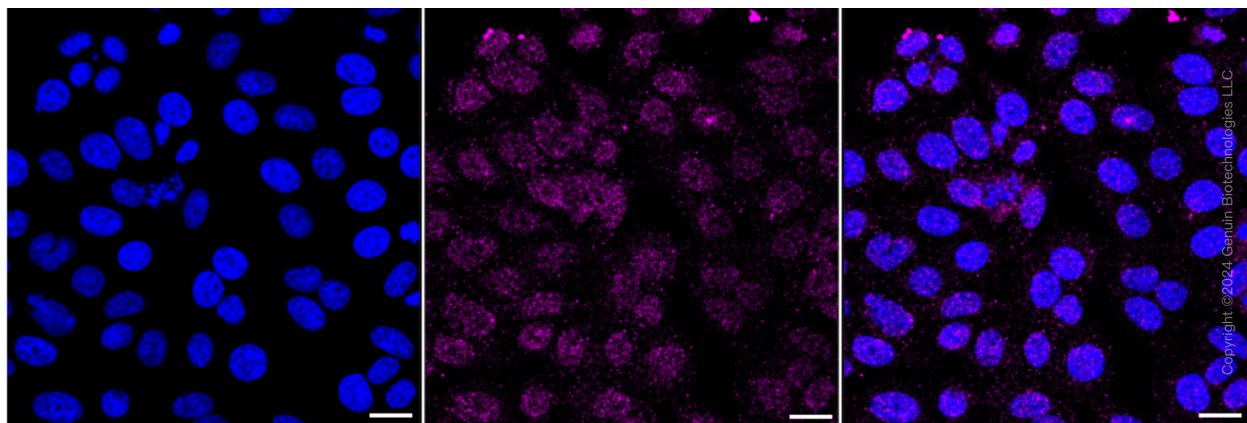
[WWW.GENUINBIOTECH.COM](http://WWW.GENUINBIOTECH.COM)

## KD-Validated Anti-SCARB1 Recombinant Rabbit Monoclonal Antibody

PAGE 2

**Note:** This product is for research use only.

### Validation Data



Immunocytochemical staining of HepG2 cells with anti-SCARB1 antibody (Cat#62558, 1:1,000). Nuclei were stained blue with DAPI; SCARB1 was stained magenta with Alexa Fluor® 647. Images were taken using Leica stellaris 5. Protein abundance based on laser Intensity and smart gain: Medium. Scale bar: 20  $\mu$ m.

---

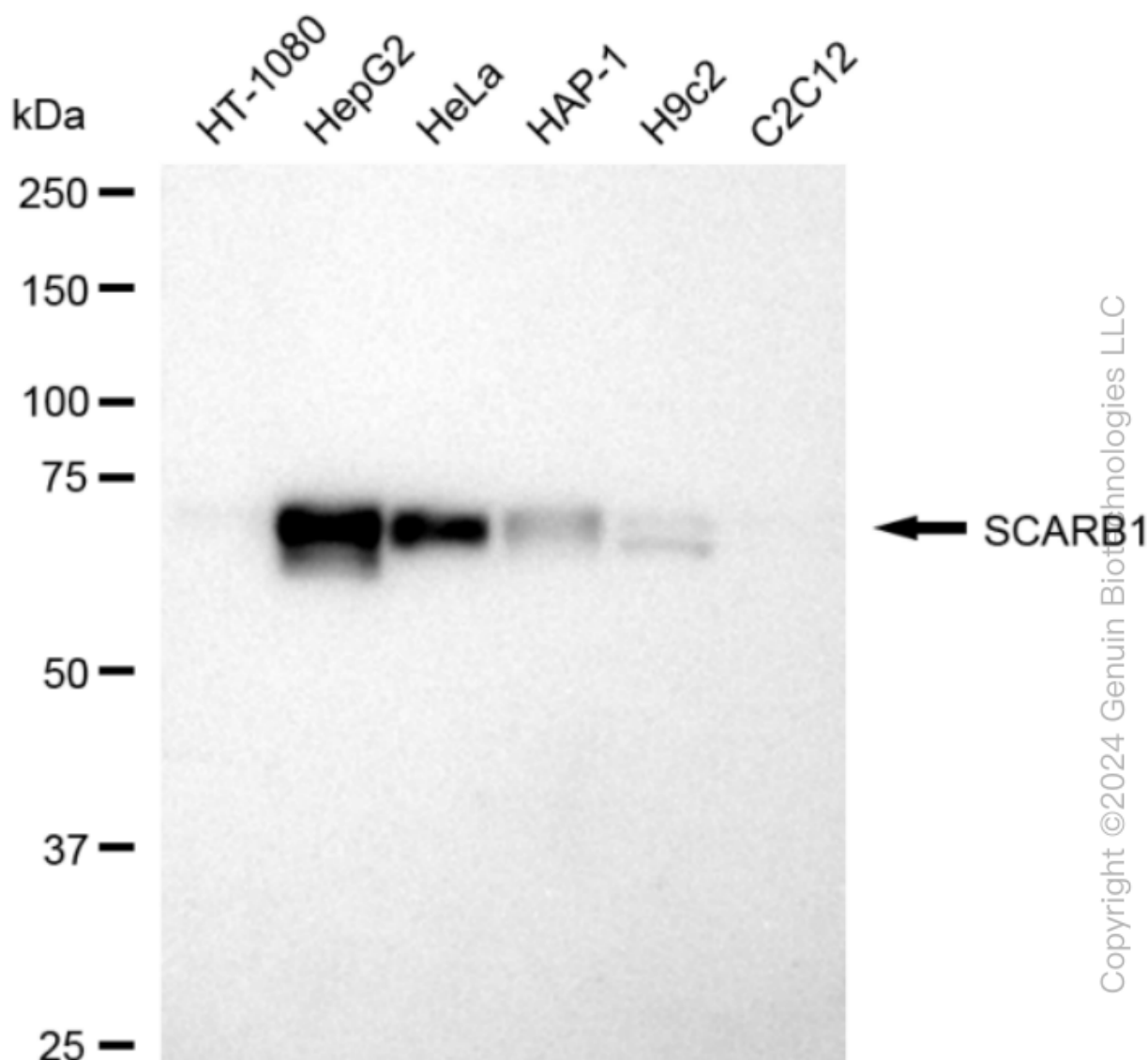
#### SUPPORT

SUPPORT@GENUINBIOTECH.COM  
TEL: +1-540-855-7041

#### ORDERS

SALES@GENUINBIOTECH.COM  
FAX: +1-540-855-7041

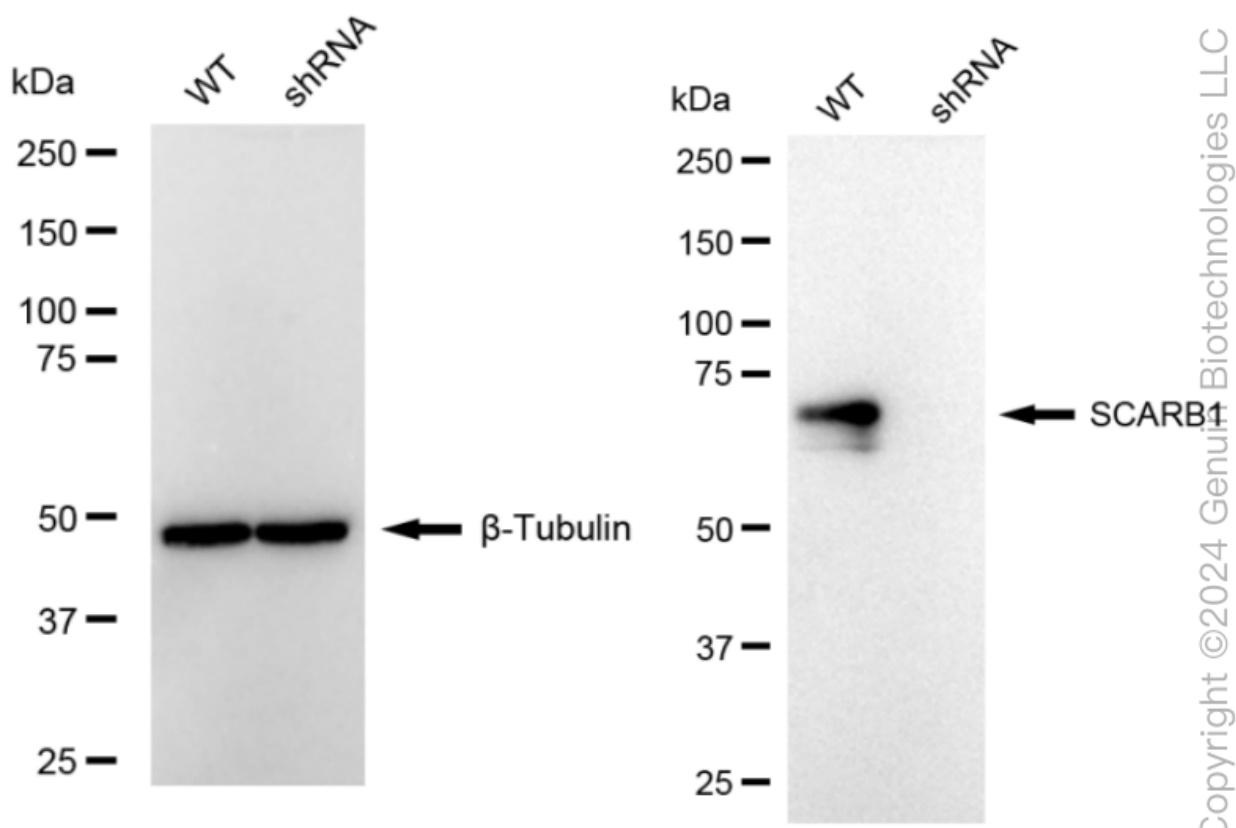
[WWW.GENUINBIOTECH.COM](http://WWW.GENUINBIOTECH.COM)



Western blotting analysis using anti-SCARB1 antibody (Cat#62558). Total cell lysates (30 µg) from various cell lines were loaded and separated by SDS-PAGE. The blot was incubated with anti-SCARB1 antibody (Cat#62558, 1:5,000) and HRP-conjugated goat anti-rabbit secondary antibody (Cat#201, 1:20,000) respectively. Image was developed using FeQ™ ECL Substrate Kit (Cat#226).

## KD-Validated Anti-SCARB1 Recombinant Rabbit Monoclonal Antibody

PAGE 4



Western blotting analysis using anti-SCARB1 antibody (Cat#62558). SCARB1 expression in wild type (WT) and SCARB1 shRNA knockdown (KD) HeLa cells with 20 µg of total cell lysates. β-Tubulin serves as a loading control. The blot was incubated with anti-SCARB1 antibody (Cat#62558, 1:5,000) and HRP-conjugated goat anti-rabbit secondary antibody (Cat#201, 1:20,000) respectively. Image was developed using NaQ™ ECL Substrate Kit (Cat#716).

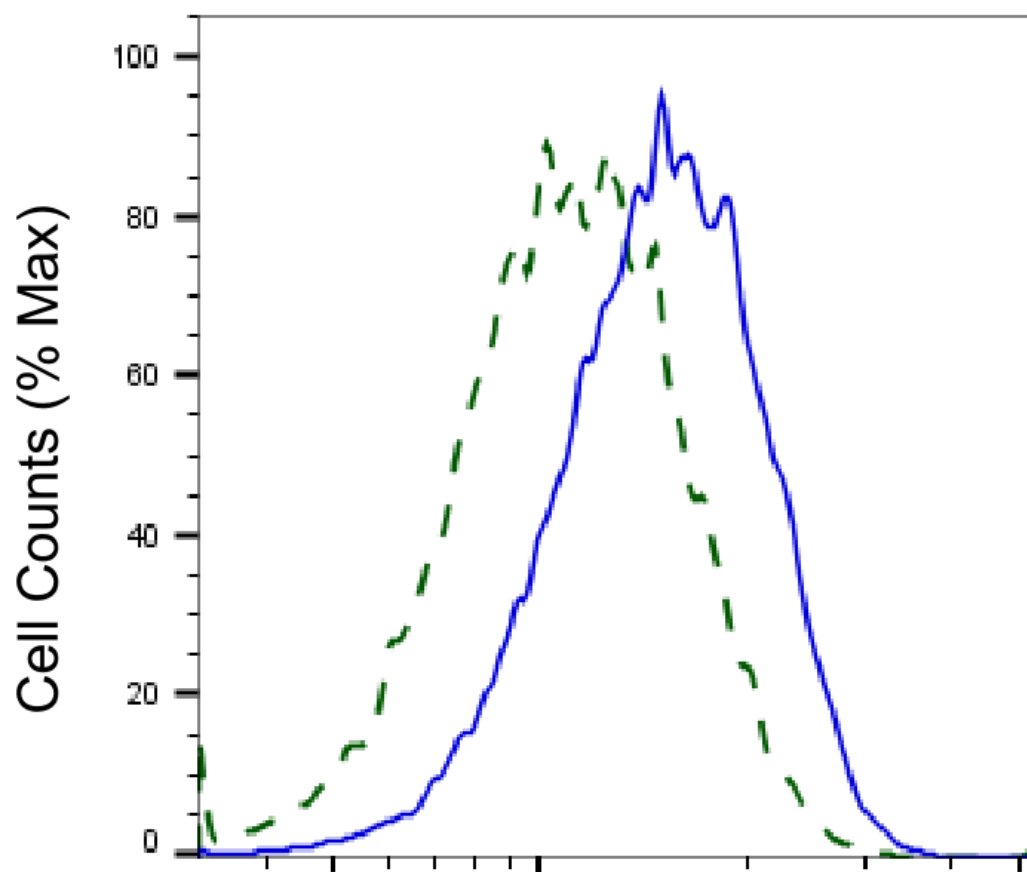
### SUPPORT

SUPPORT@GENUINBIOTECH.COM  
TEL: +1-540-855-7041

### ORDERS

SALES@GENUINBIOTECH.COM  
FAX: +1-540-855-7041

[WWW.GENUINBIOTECH.COM](http://WWW.GENUINBIOTECH.COM)



Copyright ©2025 Genuin Biotechnologies LLC

## SCARB1-Alexa Fluor® 647

Validation of SCARB1 knockdown using flow cytometry. Wild-type(WT, Blue) and knockdown(KD, Green) HeLa cells were stained with anti-SCARB1 antibody (Cat#62558, 1:2,000) and analyzed using BD flow cytometer.