

KD-Validated Anti-DNA Polymerase beta Recombinant Rabbit Monoclonal Antibody



Catalog #: 62575

Aliases

POLB; DNA Polymerase Beta; Polymerase (DNA Directed), Beta; 5'-Deoxyribose-Phosphate Lyase; Polymerase (DNA) Beta; 5'-DRP Lyase; AP Lyase; DNA Polymerase Beta Subunit; DNA Pol Beta; EC 4.2.99.18; EC 4.2.99.-; EC 2.7.7.7

Background

Gene Name: POLB

NCBI Gene Entry: [5423](#)

UniProt Entry: [P06746](#)

Application Information

Molecular Weight: Predicted, 38 kDa, observed, 38 kDa

Clonality: Rabbit monoclonal antibody

Clone ID: 24GB1475

Species Reactivity: Human, mouse, rat

Applications Tested: Western blotting (WB), flow cytometry (FCM), immunocytochemistry (IC)

Immunogen

A synthesized peptide derived from human DNA polymerase beta

Isotype

Rabbit IgG

Storage Buffer

Supplied in PBS (pH 7.4) containing 50% glycerol, and 0.02% sodium azide.

Storage

Store at -20 °C for one year.

Recommended Dilutions

Western Blotting (WB): 1:1,000-1:5,000

Flow Cytometry (FCM): 1:2,000

Immunocytochemistry (IC): 1:100-1:1,000

Note: This product is for research use only.

SUPPORT

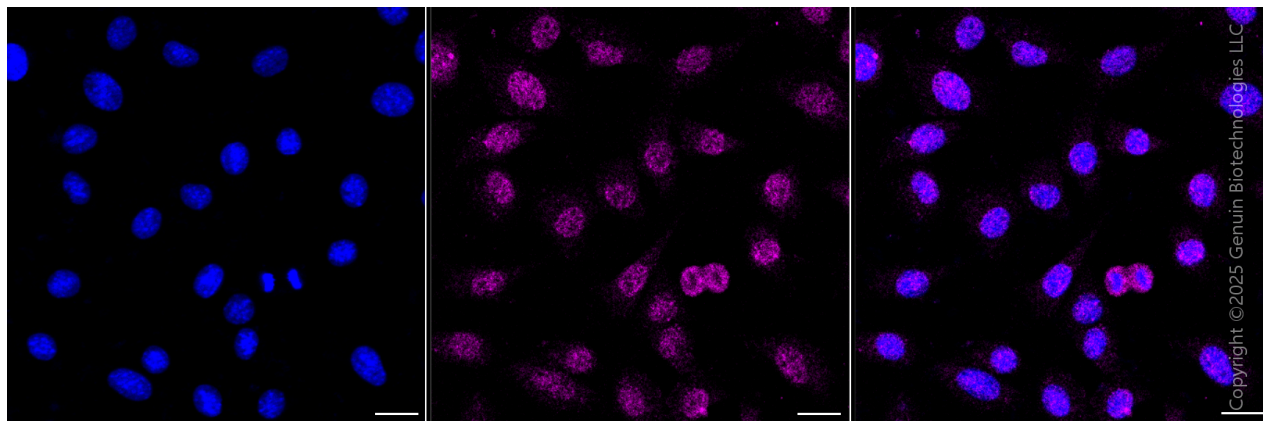
SUPPORT@GENUINBIOTECH.COM
TEL: +1-540-855-7041

ORDERS

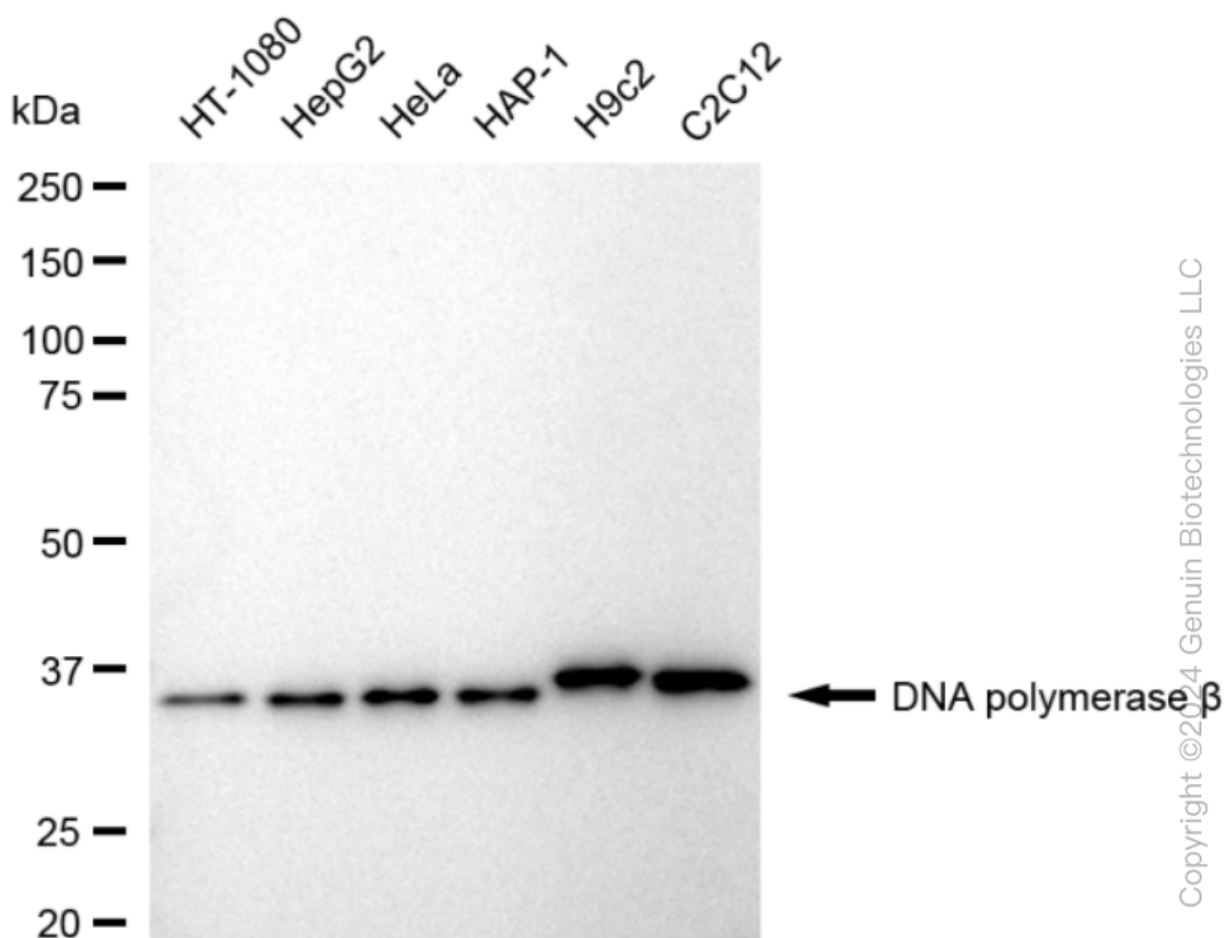
SALES@GENUINBIOTECH.COM
FAX: +1-540-855-7041

WWW.GENUINBIOTECH.COM

Validation Data



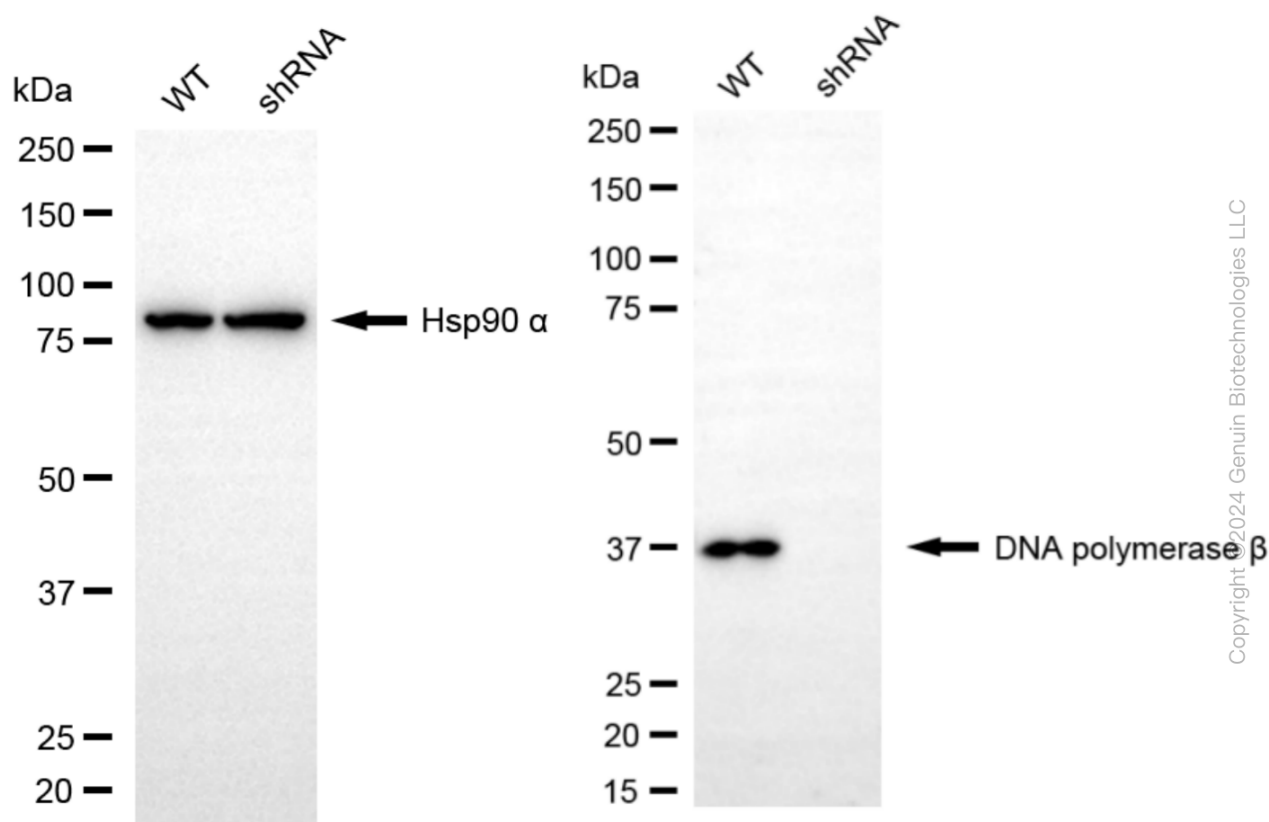
Immunocytochemical staining of C2C12 cells with anti-DNA polymerase beta antibody (Cat#62575, 1:1,000) . Nuclei were stained blue with DAPI; DNA polymerase beta was stained magenta with Alexa Fluor® 647. Images were taken using Leica stellaris 5. Protein abundance based on laser Intensity and Smart Gain□Low. Scale bar, 20 μm.



KD-Validated Anti-DNA Polymerase beta Recombinant Rabbit Monoclonal Antibody

PAGE 3

Western blotting analysis using anti-DNA polymerase beta antibody (Cat#62575). Total cell lysates (30 µg) from various cell lines were loaded and separated by SDS-PAGE. The blot was incubated with anti-DNA polymerase beta antibody (Cat#62575, 1:5,000) and HRP-conjugated goat anti-rabbit secondary antibody (Cat#201, 1:20,000) respectively. Image was developed using FeQ™ ECL Substrate Kit (Cat#226).



Western blotting analysis using anti-DNA Polymerase beta antibody (Cat#62575). DNA Polymerase beta expression in wild-type (WT) and DNA Polymerase beta (POLB) shRNA knockdown (KD) HeLa cells with 20 µg of total cell lysates. Hsp90 α serves as a loading control. The blot was incubated with anti-DNA Polymerase beta antibody (Cat#62575, 1:5,000) and HRP-conjugated goat anti-rabbit secondary antibody (Cat#201, 1:20,000) respectively. Image was developed using NaQ™ ECL Substrate Kit (Cat#716).

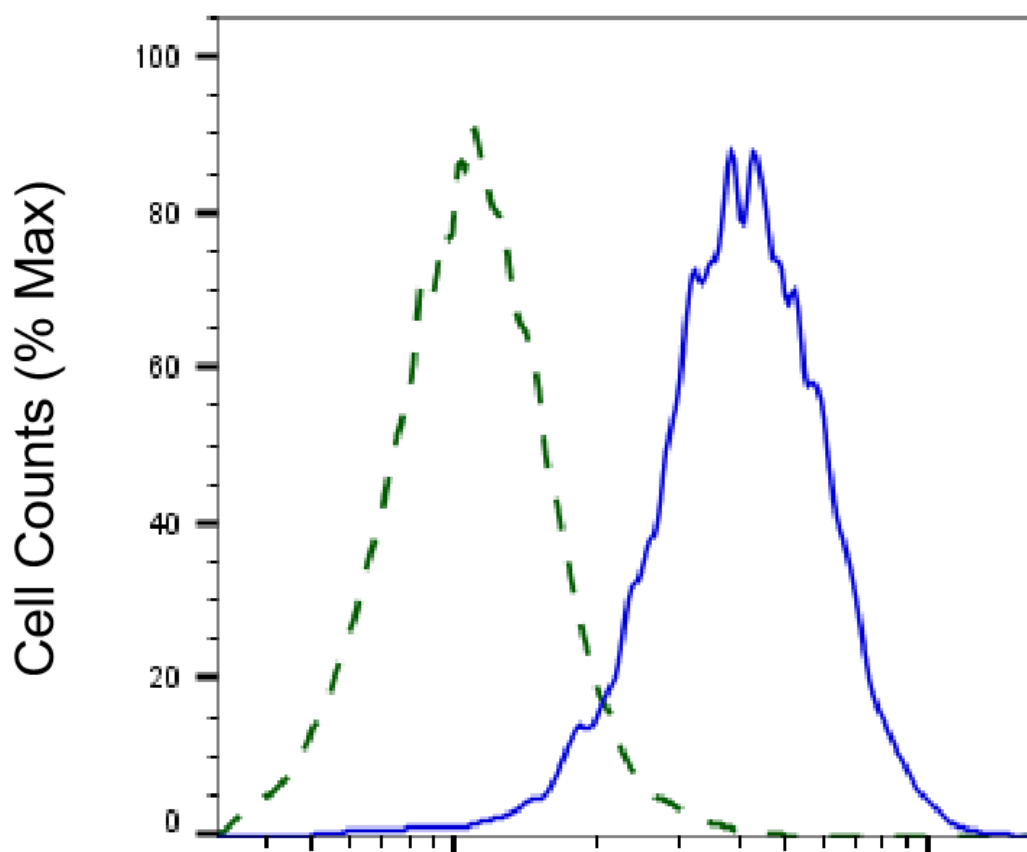
SUPPORT

SUPPORT@GENUINBIOTECH.COM
TEL: +1-540-855-7041

ORDERS

SALES@GENUINBIOTECH.COM
FAX: +1-540-855-7041

WWW.GENUINBIOTECH.COM



Copyright ©2025 Genuin Biotechnologies LLC

DNA polymerase beta-Alexa Fluor® 647

Validation of DNA polymerase beta knockdown using flow cytometry. Wild-type(WT, Blue) and knockdown(KD, Green) HeLa cells were stained with anti-DNA polymerase beta antibody (Cat#62575, 1:2,000) and analyzed using BD flow cytometer.

SUPPORT

SUPPORT@GENUINBIOTECH.COM
TEL: +1-540-855-7041

ORDERS

SALES@GENUINBIOTECH.COM
FAX: +1-540-855-7041

WWW.GENUINBIOTECH.COM