

KD-Validated Anti-Proteasome Activator Subunit 1 Recombinant Rabbit Monoclonal



Catalog #: 62582

Aliases

Proteasome Activator Subunit 1; PA28alpha; IFI5111; Proteasome (Prosome, Macropain) Activator Subunit 1 (PA28 Alpha); Activator Of Multicatalytic Protease Subunit 1; Interferon Gamma Up-Regulated I-5111 Protein; Proteasome Activator Complex Subunit 1; 11S Regulator Complex Subunit Alpha; IGUP I-5111; Epididymis Secretory Sperm Binding Protein Li 129m; Interferon-Gamma-Inducible Protein 5111; Proteasome Activator 28 Subunit Alpha; Interferon-Gamma IEF SSP 5111; 29-KD MCP Activator Subunit; HEL-S-129m; REG-Alpha; REGalpha; PA28A; PA28a

Background

Gene Name: PSME1

NCBI Gene Entry: [5720](#)

UniProt Entry: [Q06323](#)

Application Information

Molecular Weight: Predicted, 29 kDa, observed, 29 kDa

Clonality: Rabbit monoclonal antibody

Clone ID: 24GB1505

Species Reactivity: Human, mouse, rat

Applications Tested: Western blotting (WB), flow cytometry (FCM), immunocytochemistry (IC)

Immunogen

A synthesized peptide derived from human PSME1

Isotype

Rabbit IgG

Storage Buffer

Supplied in PBS (pH 7.4) containing 50% glycerol, and 0.02% sodium azide.

Storage

Store at -20 °C for one year.

Recommended Dilutions

Western Blotting (WB): 1:1,000-1:5,000

Flow Cytometry (FCM): 1:2,000

SUPPORT

SUPPORT@GENUINBIOTECH.COM
TEL: +1-540-855-7041

ORDERS

SALES@GENUINBIOTECH.COM
FAX: +1-540-855-7041

WWW.GENUINBIOTECH.COM

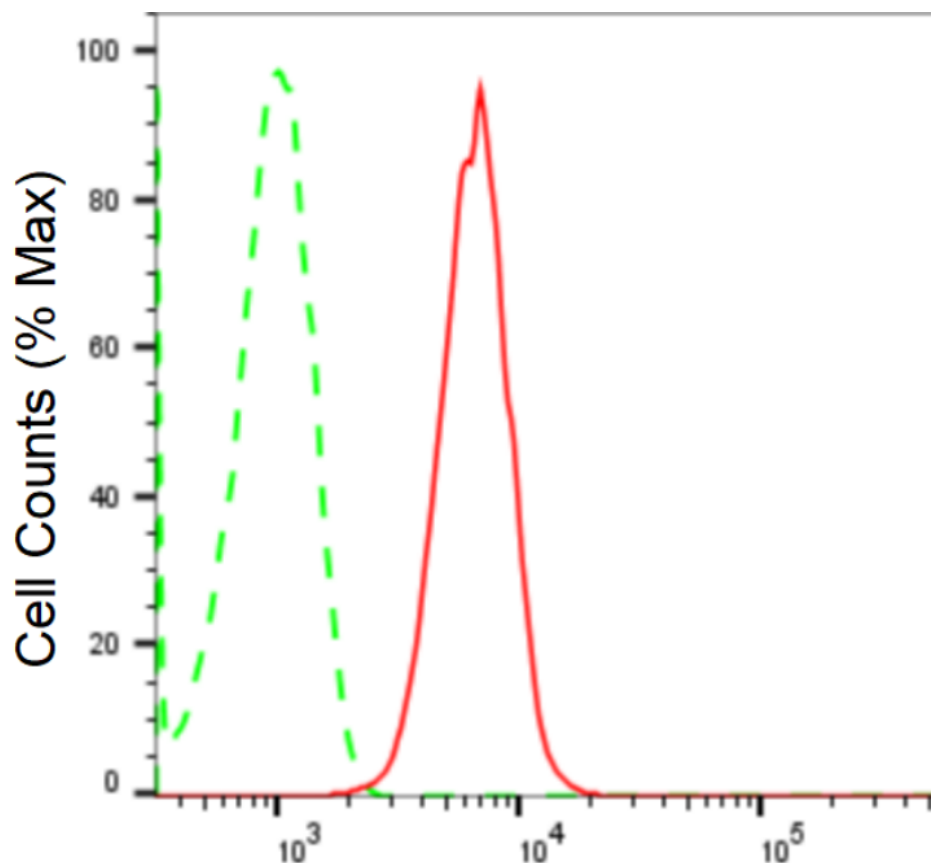
KD-Validated Anti-Proteasome Activator Subunit 1 Recombinant Rabbit Monoclonal

PAGE 2

Immunocytochemistry (IC): 1:100-1:1,000

Note: This product is for research use only.

Validation Data



Copyright ©2024 Genuin Biotechnologies LLC

Proteasome activator subunit 1-Alexa Fluor® 647

Flow cytometric analysis of Proteasome activator subunit 1 expression in HT-1080 cells using anti-Proteasome activator subunit 1 antibody (Cat#62582, 1:2,000). Green, isotype control; red, Proteasome activator subunit 1.

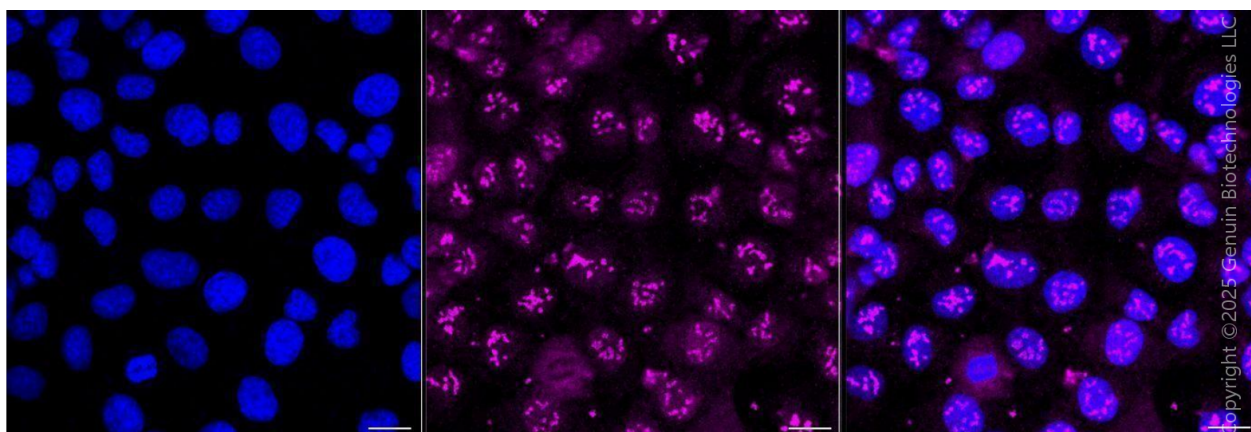
SUPPORT

SUPPORT@GENUINBIOTECH.COM
TEL: +1-540-855-7041

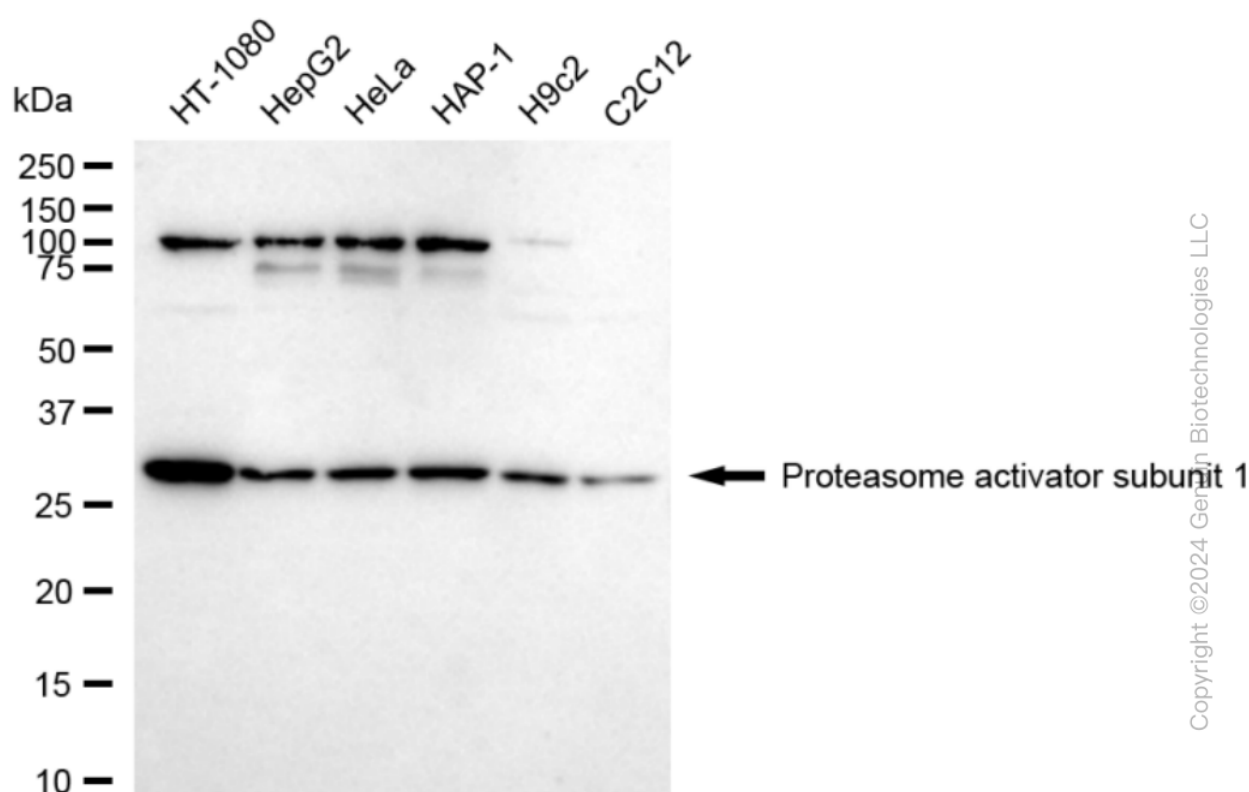
ORDERS

SALES@GENUINBIOTECH.COM
FAX: +1-540-855-7041

WWW.GENUINBIOTECH.COM



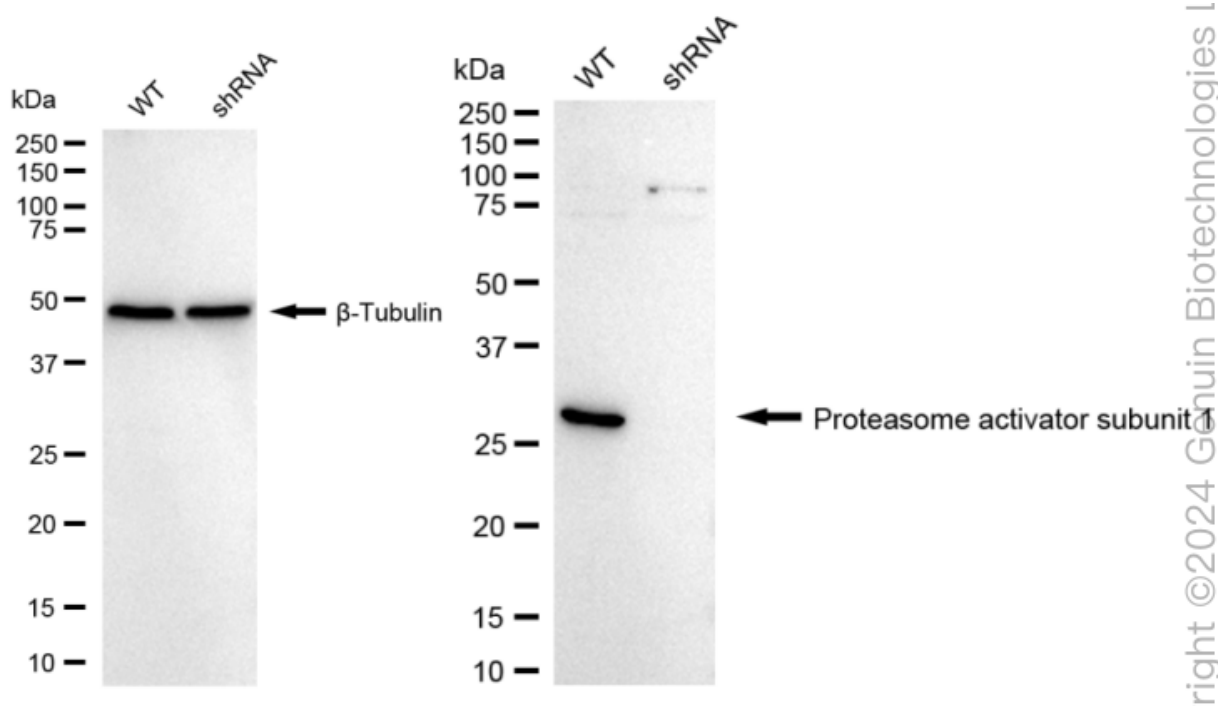
Immunocytochemical staining of HT-1080 cells with anti-Proteasome activator subunit 1 antibody (Cat#62582, 1:1,000) . Nuclei were stained blue with DAPI; Proteasome activator subunit 1 was stained magenta with Alexa Fluor® 647. Images were taken using Leica stellaris 5. Protein abundance based on laser Intensity and smart gain: Medium. Scale bar, 20 μ m.



Western blotting analysis using anti-Proteasome activator subunit 1 antibody (Cat#62582). Total cell lysates (30 μ g) from various cell lines were loaded and separated by SDS-PAGE. The blot was incubated with anti-Proteasome activator subunit 1 antibody (Cat#62582, 1:5,000) and HRP-conjugated goat anti-rabbit secondary antibody (Cat#201, 1:20,000) respectively. Image was developed using FeQ™ ECL Substrate Kit (Cat#226).

KD-Validated Anti-Proteasome Activator Subunit 1 Recombinant Rabbit Monoclonal

PAGE 4



Western blotting analysis using anti-Proteasome activator subunit 1 antibody (Cat#62582). Proteasome activator subunit 1 expression in wild type (WT) and Proteasome activator subunit 1 shRNA knockdown (KD) HeLa cells with 20 μ g of total cell lysates. β -Tubulin serves as a loading control. The blot was incubated with anti-Proteasome activator subunit 1 antibody (Cat#62582, 1:5,000) and HRP-conjugated goat anti-rabbit secondary antibody (Cat#201, 1:20,000) respectively. Image was developed using NaQ™ ECL Substrate Kit (Cat#716).

SUPPORT

SUPPORT@GENUINBIOTECH.COM
TEL: +1-540-855-7041

ORDERS

SALES@GENUINBIOTECH.COM
FAX: +1-540-855-7041

WWW.GENUINBIOTECH.COM