

# KD-Validated Anti-Forkhead box O4 Recombinant Rabbit Monoclonal Antibody



**Catalog #: 62585**

## Aliases

FOXO4; Forkhead Box O4; AFX1; MLLT7; Myeloid/Lymphoid Or Mixed-Lineage Leukemia (Trithorax Homolog, Drosophila); Translocated To, 7 2 3; Fork Head Domain Transcription Factor AFX1; Forkhead Box Protein O4; AFX; Myeloid/Lymphoid Or Mixed-Lineage Leukemia (Trithorax (Drosophila) Homolog); Translocated To, 7

## Background

Gene Name: FOXO4

NCBI Gene Entry: [4303](#)

UniProt Entry: [P98177](#)

## Application Information

Molecular Weight: Predicted, 54 kDa, observed, 23,65 kDa

Clonality: Rabbit monoclonal antibody

Clone ID: 23GB1470

Species Reactivity: Human, mouse, rat

Applications Tested: Western blotting (WB), flow cytometry (FCM), immunocytochemistry (IC)

## Immunogen

A synthesized peptide derived from human FoxO4

## Isotype

Rabbit IgG

## Storage Buffer

Supplied in PBS (pH 7.4) containing 50% glycerol, and 0.02% sodium azide.

## Storage

Store at -20 °C for one year.

## Recommended Dilutions

Western Blotting (WB): 1:1,000-1:5,000

Flow Cytometry (FCM): 1:2,000

Immunocytochemistry (IC): 1:100-1:1,000

---

### SUPPORT

SUPPORT@GENUINBIOTECH.COM  
TEL: +1-540-855-7041

### ORDERS

SALES@GENUINBIOTECH.COM  
FAX: +1-540-855-7041

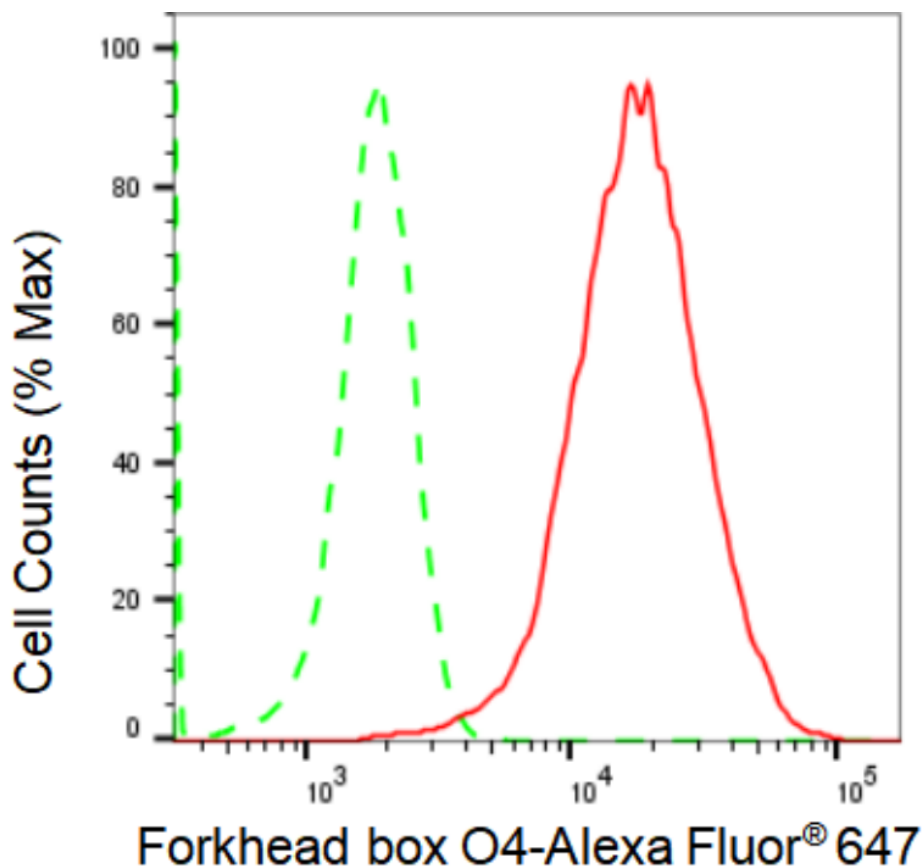
[WWW.GENUINBIOTECH.COM](http://WWW.GENUINBIOTECH.COM)

## KD-Validated Anti-Forkhead box O4 Recombinant Rabbit Monoclonal Antibody

PAGE 2

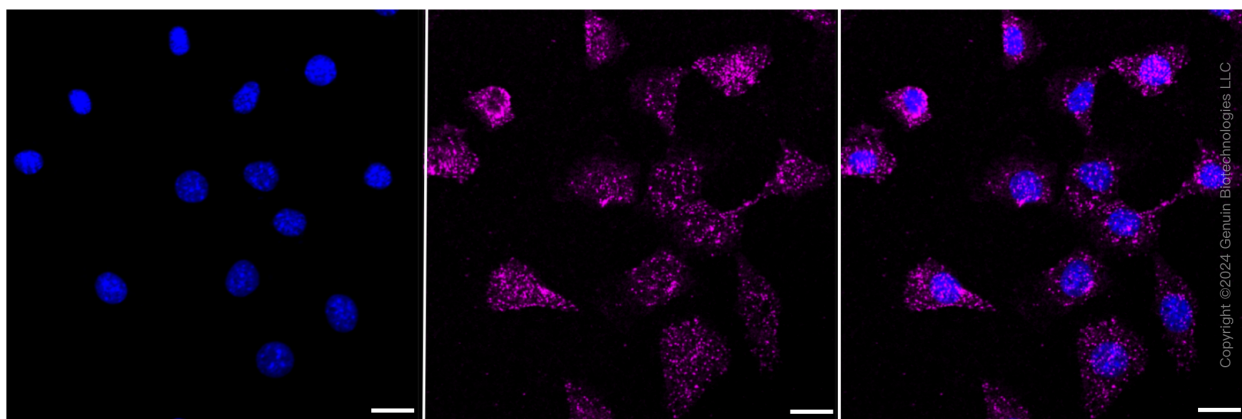
**Note:** This product is for research use only.

### Validation Data



Copyright ©2024 Genuin Biotechnologies LLC

Flow cytometric analysis of Forkhead box O4 expression in HeLa cells using Forkhead box O4 antibody (Cat#62585, 1:2,000). Green, isotype control; red, Forkhead box O4.



Copyright ©2024 Genuin Biotechnologies LLC

#### SUPPORT

SUPPORT@GENUINBIOTECH.COM  
TEL: +1-540-855-7041

#### ORDERS

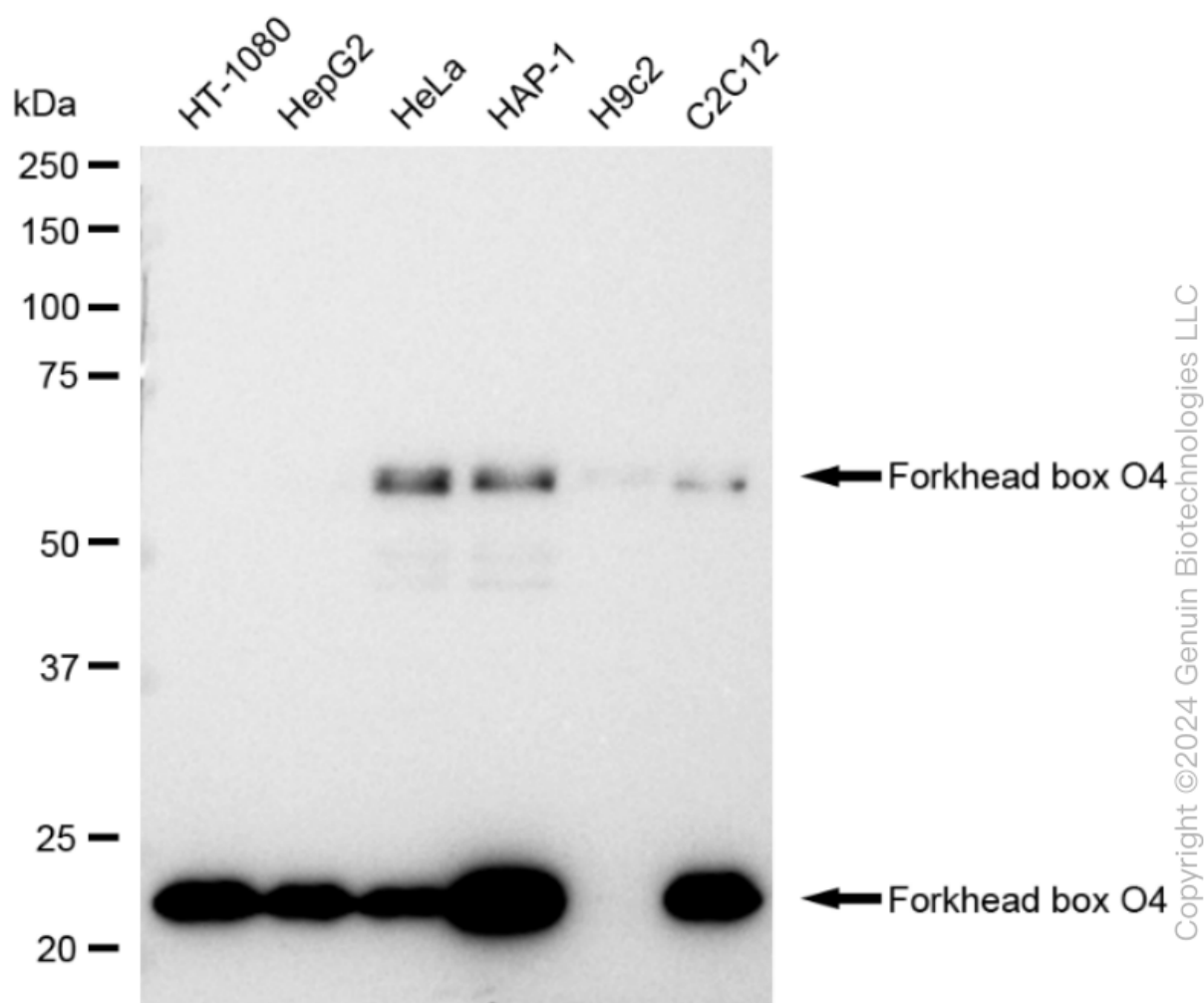
SALES@GENUINBIOTECH.COM  
FAX: +1-540-855-7041

[WWW.GENUINBIOTECH.COM](http://WWW.GENUINBIOTECH.COM)

## KD-Validated Anti-Forkhead box O4 Recombinant Rabbit Monoclonal Antibody

PAGE 3

and smart gain: Medium. Scale bar: 20  $\mu$ m.



Western blotting analysis using anti-Forkhead box O4 antibody (Cat#62585). Total cell lysates (30  $\mu$ g) from various cell lines were loaded and separated by SDS-PAGE. The blot was incubated with anti-Forkhead box O4 antibody (Cat#62585, 1:5,000) and HRP-conjugated goat anti-rabbit secondary antibody (Cat#201, 1:20,000) respectively. Image was developed using FeQ™ ECL Substrate Kit (Cat#226).

### SUPPORT

SUPPORT@GENUINBIOTECH.COM  
TEL: +1-540-855-7041

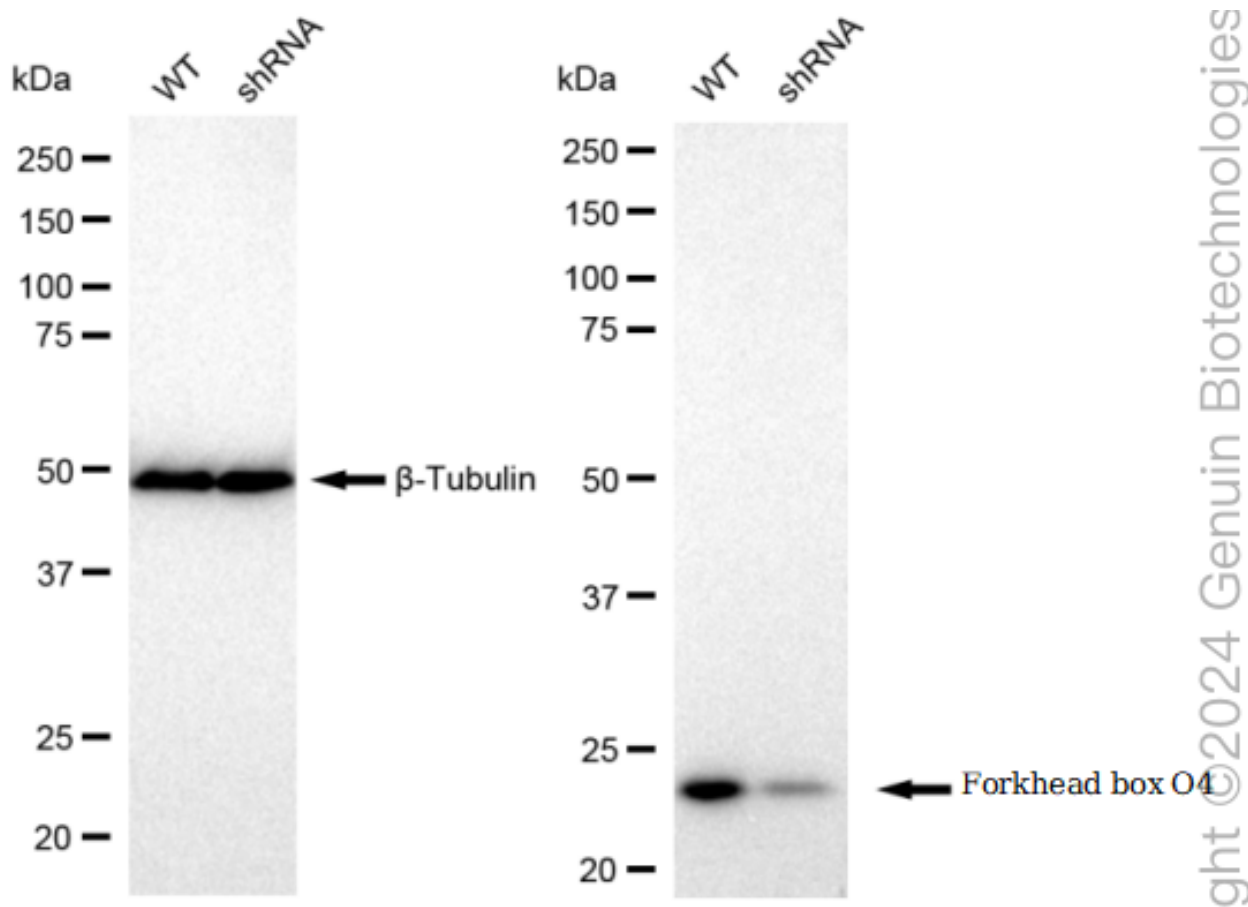
### ORDERS

SALES@GENUINBIOTECH.COM  
FAX: +1-540-855-7041

WWW.GENUINBIOTECH.COM

## KD-Validated Anti-Forkhead box O4 Recombinant Rabbit Monoclonal Antibody

PAGE 4



Western blotting analysis using anti-Forkhead box O4 antibody (Cat#62585). Forkhead box O4 expression in wild type (WT) and Forkhead box O4 shRNA knockdown (KD) 293T cells with 30  $\mu$ g of total cell lysates.  $\beta$ -Tubulin serves as a loading control. The blot was incubated with anti-Forkhead box O4 antibody (Cat#62585, 1:5,000) and HRP-conjugated goat anti-rabbit secondary antibody (Cat#201, 1:20,000) respectively. Image was developed using FeQ™ ECL Substrate Kit (Cat#226).

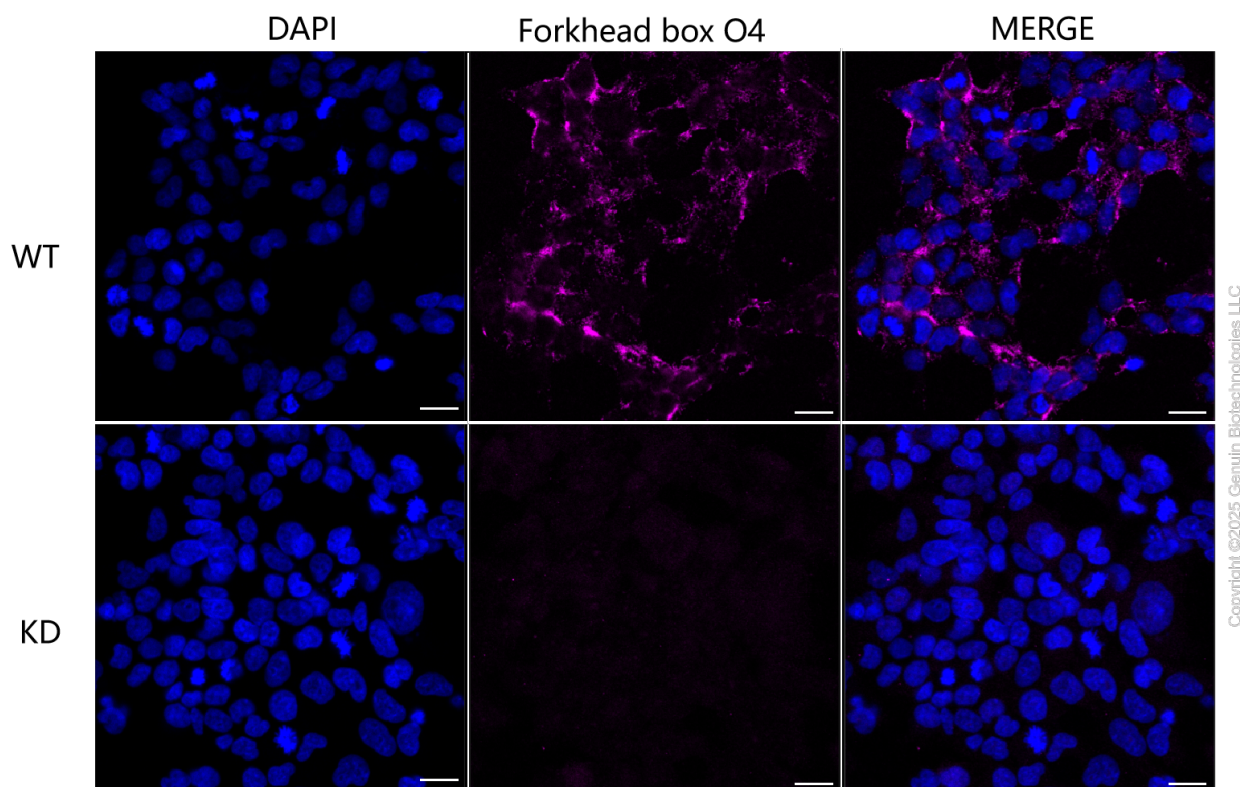
### SUPPORT

SUPPORT@GENUINBIOTECH.COM  
TEL: +1-540-855-7041

### ORDERS

SALES@GENUINBIOTECH.COM  
FAX: +1-540-855-7041

WWW.GENUINBIOTECH.COM



Immunocytochemical staining of 293T cells using anti-Forkhead box O4 antibody (Cat#62585, 1:1,000), Top panel: wild-type (WT); Bottom panel: Forkhead box O4 shRNA knockdown (KD). Nuclei were stained blue with DAPI; Forkhead box O4 was stained magenta with Alexa Fluor® 647. Scale bar, 20  $\mu$ m.