

KD-Validated Anti-SCARB2 Recombinant Rabbit Monoclonal Antibody



Catalog #: 62586

Aliases

Scavenger Receptor Class B Member 2; LIMPII; Lysosome Membrane Protein 2; HLGP85; SR-BII; LIMP-2; CD36L2; CD36 Antigen (Collagen Type I Receptor, Thrombospondin Receptor)-Like 2 (Lysosomal Integral Membrane Protein II); 85 KDa Lysosomal Membrane Sialoglycoprotein; Lysosome Membrane Protein II; CD36 Antigen-Like 2; LIMP II; LGP85; 85 KDa Lysosomal Sialoglycoprotein Scavenger Receptor Class B, Member 2; Lysosomal Integral Membrane Protein II; CD36 Antigen; LIMP2; AMRF; EPM4

Background

Gene Name: SCARB2

NCBI Gene Entry: [950](#)

UniProt Entry: [Q14108](#)

Application Information

Molecular Weight: Predicted, 54 kDa, observed, 77 kDa

Clonality: Rabbit monoclonal antibody

Clone ID: 24GB1520

Species Reactivity: Human, mouse, rat

Applications Tested: Western blotting (WB), flow cytometry (FCM), immunocytochemistry (IC)

Immunogen

A synthesized peptide derived from human LIMPII

Isotype

Rabbit IgG

Storage Buffer

Supplied in PBS (pH 7.4) containing 50% glycerol, and 0.02% sodium azide.

Storage

Store at -20 °C for one year.

Recommended Dilutions

Western Blotting (WB): 1:1,000-1:5,000,

Flow Cytometry (FCM): 1:2,000

Immunocytochemistry (IC): 1:100-1:1,000

SUPPORT

SUPPORT@GENUINBIOTECH.COM
TEL: +1-540-855-7041

ORDERS

SALES@GENUINBIOTECH.COM
FAX: +1-540-855-7041

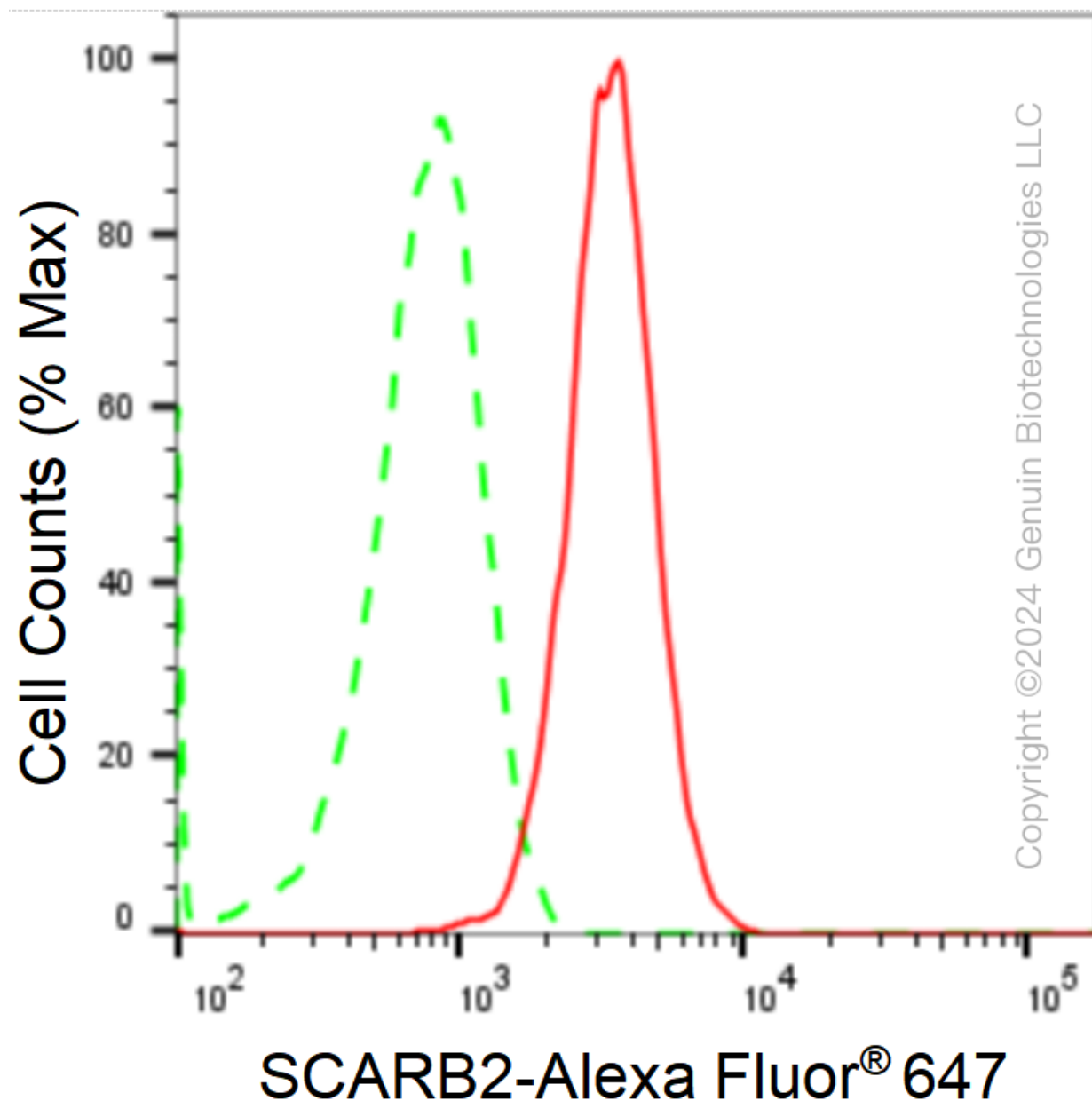
WWW.GENUINBIOTECH.COM

KD-Validated Anti-SCARB2 Recombinant Rabbit Monoclonal Antibody

PAGE 2

Note: This product is for research use only.

Validation Data



Flow cytometric analysis of SCARB2 expression in C2C12 cells using anti-SCARB2 antibody (Cat#2586, 1:2,000). Green, isotype control; red, SCARB2.

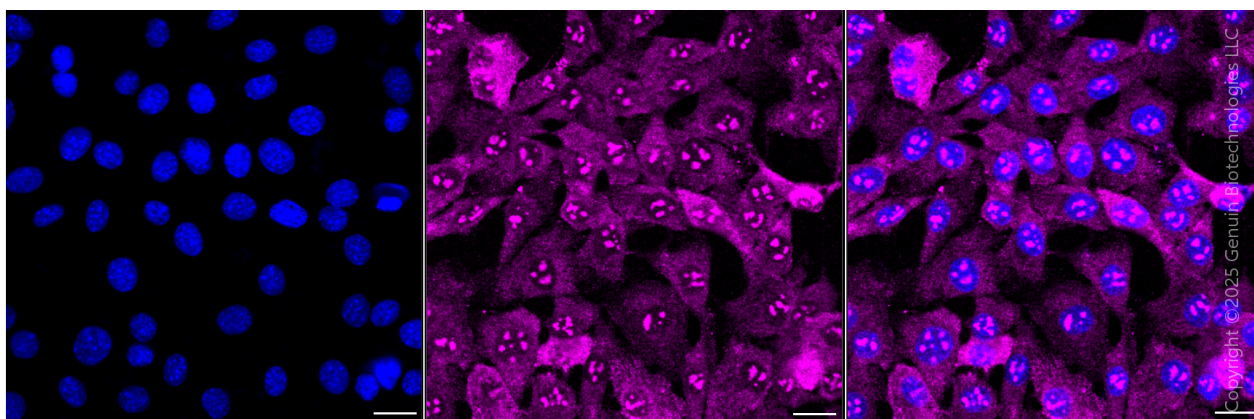
SUPPORT

SUPPORT@GENUINBIOTECH.COM
TEL: +1-540-855-7041

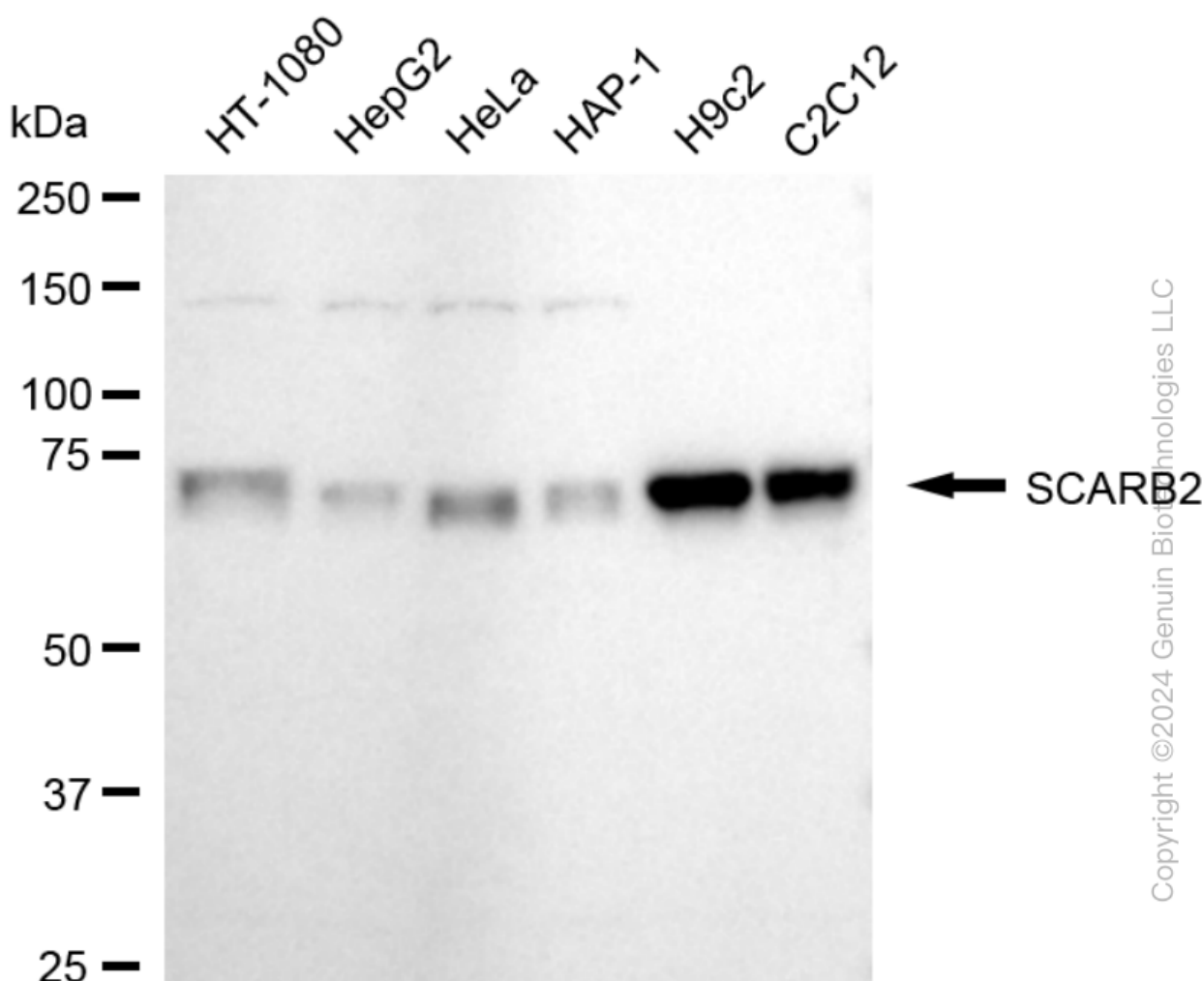
ORDERS

SALES@GENUINBIOTECH.COM
FAX: +1-540-855-7041

WWW.GENUINBIOTECH.COM



Immunocytochemical staining of C2C12 cells with anti-SCARB2 antibody (Cat#62586, 1:1,000) . Nuclei were stained blue with DAPI; SCARB2 was stained magenta with Alexa Fluor® 647. Images were taken using Leica stellaris 5. Protein abundance based on laser Intensity and smart gain: Medium. Scale bar, 20 μ m.

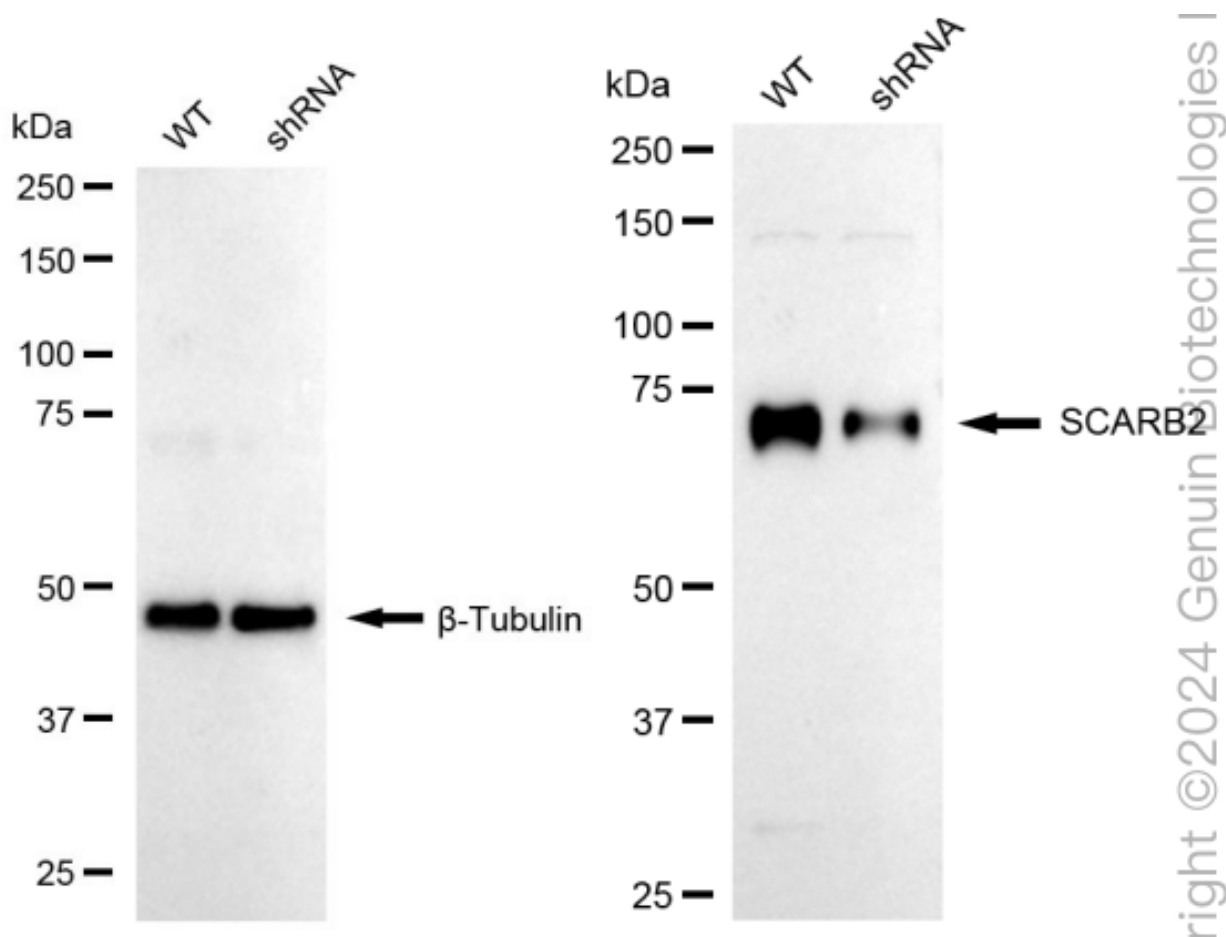


Western blotting analysis using anti-SCARB2 antibody (Cat#62586). Total cell lysates (30 μ g)

KD-Validated Anti-SCARB2 Recombinant Rabbit Monoclonal Antibody

PAGE 4

from various cell lines were loaded and separated by SDS-PAGE. The blot was incubated with anti-SCARB2 antibody (Cat#62586, 1:5,000) and HRP-conjugated goat anti-rabbit secondary antibody (Cat#201, 1:20,000) respectively. Image was developed using FeQ™ ECL Substrate Kit (Cat#226).



Western blotting analysis using anti-SCARB2 antibody (Cat#62586). SCARB2 expression in wild type (WT) and SCARB2 shRNA knockdown (KD) HeLa cells with 20 μ g of total cell lysates. β -Tubulin serves as a loading control. The blot was incubated with anti-SCARB2 antibody (Cat#62586, 1:5,000) and HRP-conjugated goat anti-rabbit secondary antibody (Cat#201, 1:20,000) respectively. Image was developed using NaQ™ ECL Substrate Kit (Cat#716).

SUPPORT

SUPPORT@GENUINBIOTECH.COM
TEL: +1-540-855-7041

ORDERS

SALES@GENUINBIOTECH.COM
FAX: +1-540-855-7041

WWW.GENUINBIOTECH.COM