

# KD-Validated Anti-Septin 2 Recombinant Rabbit Monoclonal Antibody



**Catalog #: 62587**

## Aliases

Septin 2; KIAA0158; Septin-2; HNedd5; Pnutl3; DIFF6; NEDD5; SEPT2; Neural Precursor Cell Expressed, Developmentally Down-Regulated 5; NEDD-5; Neural Precursor Cell Expressed Developmentally Down-Regulated Protein 5; Epididymis Secretory Sperm Binding Protein

## Background

Gene Name: SEPTIN2

NCBI Gene Entry: [4735](#)

UniProt Entry: [Q15019](#)

## Application Information

Molecular Weight: Predicted, 41 kDa, observed, 41 kDa

Clonality: Rabbit monoclonal antibody

Clone ID: 24GB1525

Species Reactivity: Human, mouse, rat

Applications Tested: Western blotting (WB), flow cytometry (FCM), immunocytochemistry (IC)

## Immunogen

A synthesized peptide derived from human Septin 2

## Isotype

Rabbit IgG

## Storage Buffer

Supplied in PBS (pH 7.4) containing 50% glycerol, and 0.02% sodium azide.

## Storage

Store at -20 °C for one year.

## Recommended Dilutions

Western Blotting (WB): 1:1,000-1:5,000

Flow Cytometry (FCM): 1:2,000

Immunocytochemistry (IC): 1:100-1:1,000

**Note:** This product is for research use only.

---

### SUPPORT

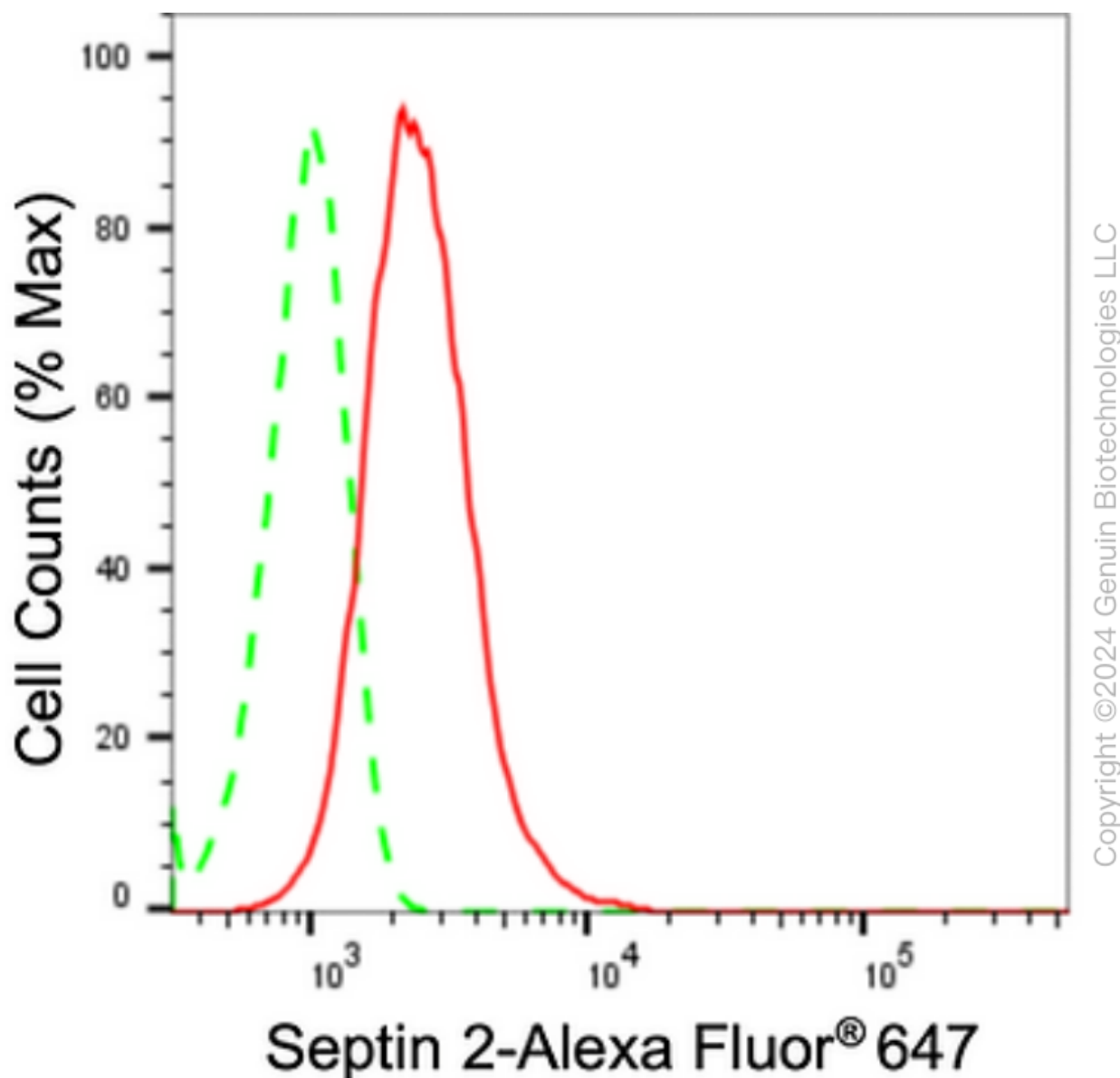
SUPPORT@GENUINBIOTECH.COM  
TEL: +1-540-855-7041

### ORDERS

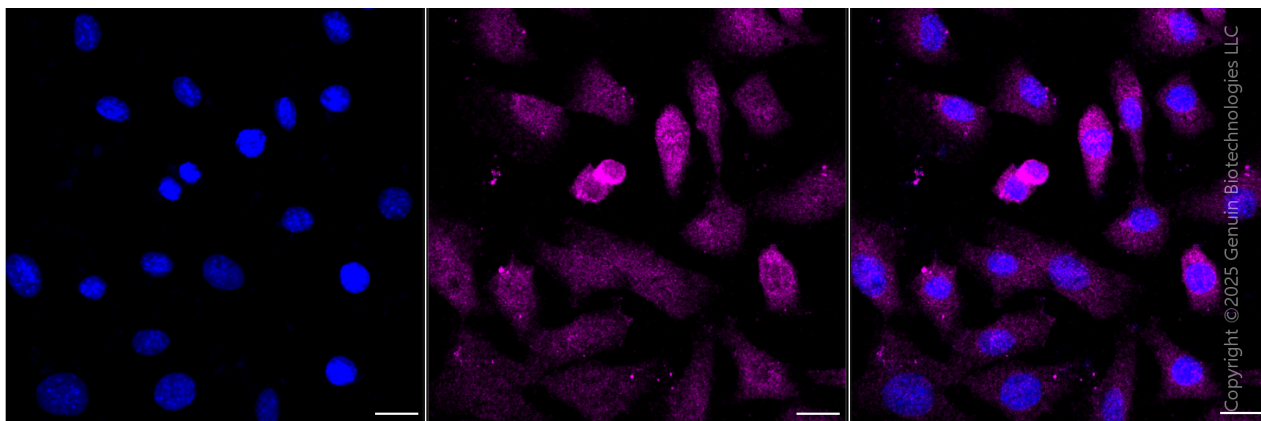
SALES@GENUINBIOTECH.COM  
FAX: +1-540-855-7041

[WWW.GENUINBIOTECH.COM](http://WWW.GENUINBIOTECH.COM)

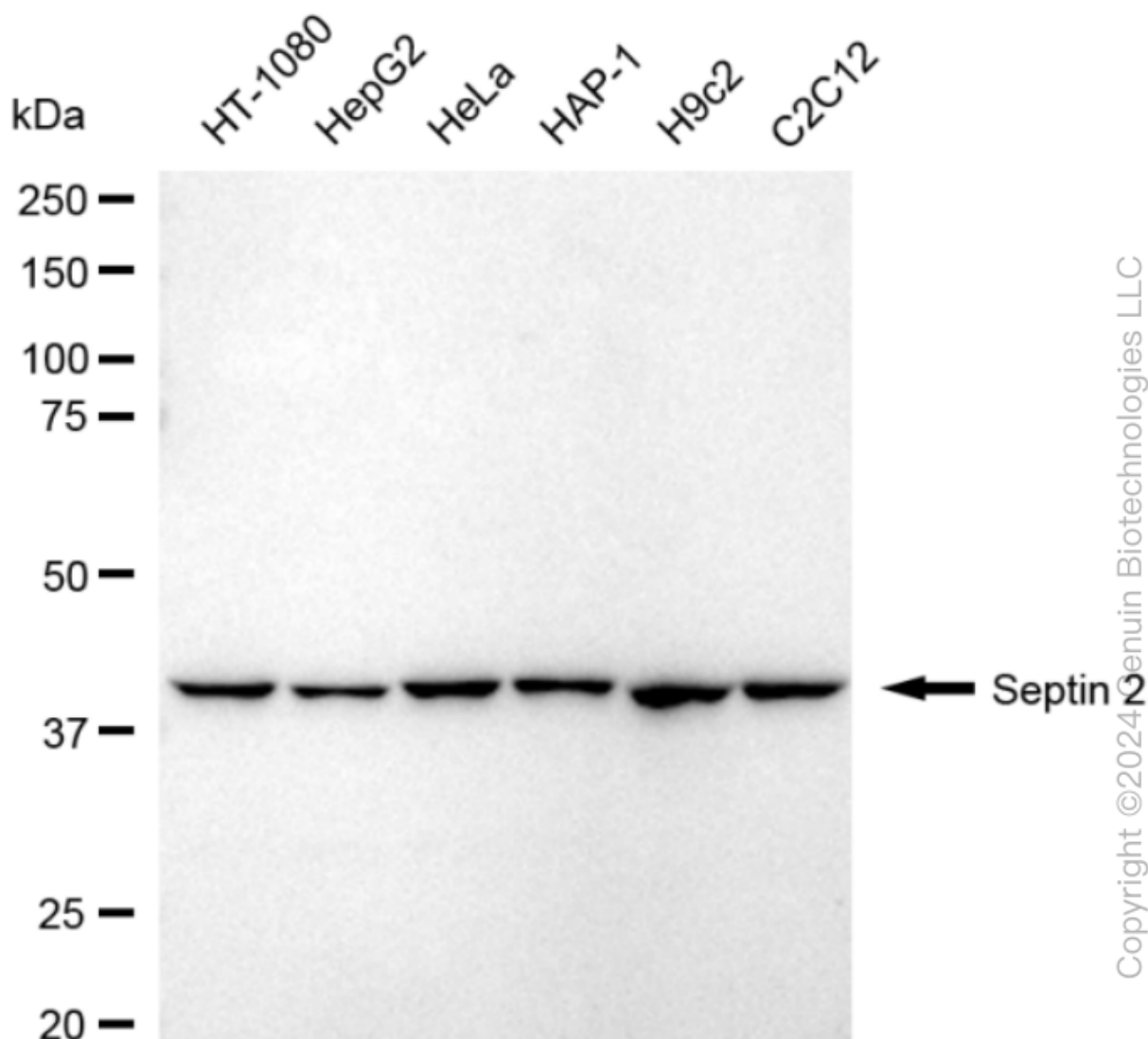
**Validation Data**



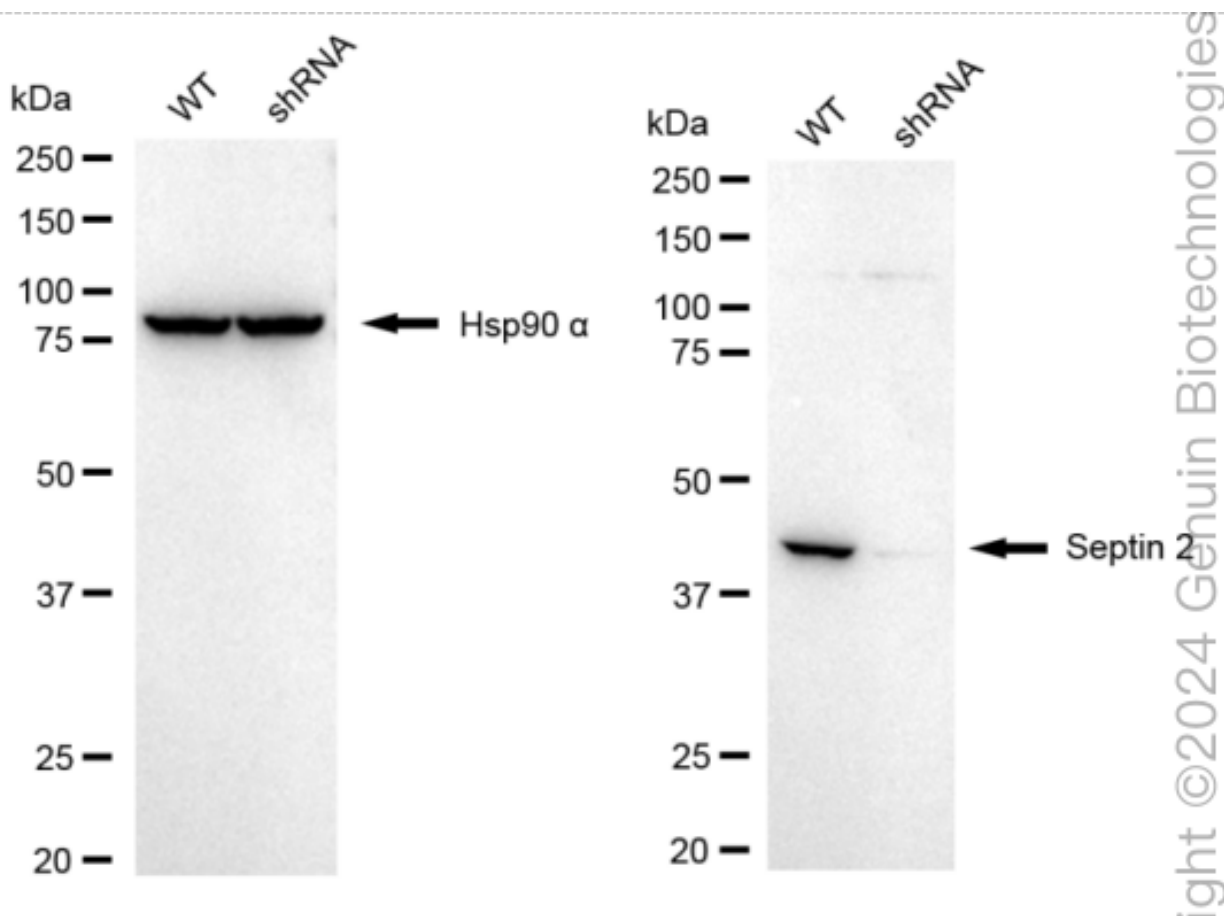
Flow cytometric analysis of Septin 2 expression in C2C12 cells using anti-Septin 2 antibody (Cat#62587, 1:2,000). Green, isotype control; red, Septin 2.



Immunocytochemical staining of C2C12 cells with anti-Septin 2 antibody (Cat#62587, 1:1,000) . Nuclei were stained blue with DAPI; Septin 2 was stained magenta with Alexa Fluor® 647. Images were taken using Leica stellaris 5. Protein abundance based on laser Intensity and smart gain: Medium. Scale bar, 20  $\mu$ m.



Western blotting analysis using anti-Septin 2 antibody (Cat#62587). Total cell lysates (30 µg) from various cell lines were loaded and separated by SDS-PAGE. The blot was incubated with anti-Septin 2 antibody (Cat#62587, 1:5,000) and HRP-conjugated goat anti-rabbit secondary antibody (Cat#201, 1:20,000) respectively. Image was developed using FeQ™ ECL Substrate Kit (Cat#226).



Western blotting analysis using anti-septin 2 antibody (Cat#62587). Septin 2 expression in wild-type (WT) and septin 2 (SEPTIN2) shRNA knockdown (KD) HeLa cells with 20  $\mu$ g of total cell lysates. Hsp90  $\alpha$  serves as a loading control. The blot was incubated with anti-septin 2 antibody (Cat#62587, 1:5,000) and HRP-conjugated goat anti-rabbit secondary antibody (Cat#201, 1:20,000) respectively. Image was developed using NaQ<sup>TM</sup> ECL Substrate Kit (Cat#716).