

# KD-Validated Anti-RABEPK Recombinant Rabbit Monoclonal Antibody



**Catalog #: 62590**

## Aliases

Rab9 Effector Protein With Kelch Motifs; RAB9P40; BA65N13.1; 40 KDa Rab9 Effector Protein; P40; Rab9 Effector P40

## Background

Gene Name: RABEPK

NCBI Gene Entry: [10244](#)

UniProt Entry: [Q7Z6M1](#)

## Application Information

Molecular Weight: Predicted, 41 kDa, observed, 41 kDa

Clonality: Rabbit monoclonal antibody

Clone ID: 24GB1540

Species Reactivity: Human

Applications Tested: Western blotting (WB), flow cytometry (FCM)

## Immunogen

A synthesized peptide derived from human p40

## Isotype

Rabbit IgG

## Storage Buffer

Supplied in PBS (pH 7.4) containing 50% glycerol, and 0.02% sodium azide.

## Storage

Store at -20 °C for one year.

## Recommended Dilutions

Western Blotting (WB): 1:1,000-1:5,000

Flow Cytometry (FCM): 1:2,000

**Note:** This product is for research use only.

## Validation Data

---

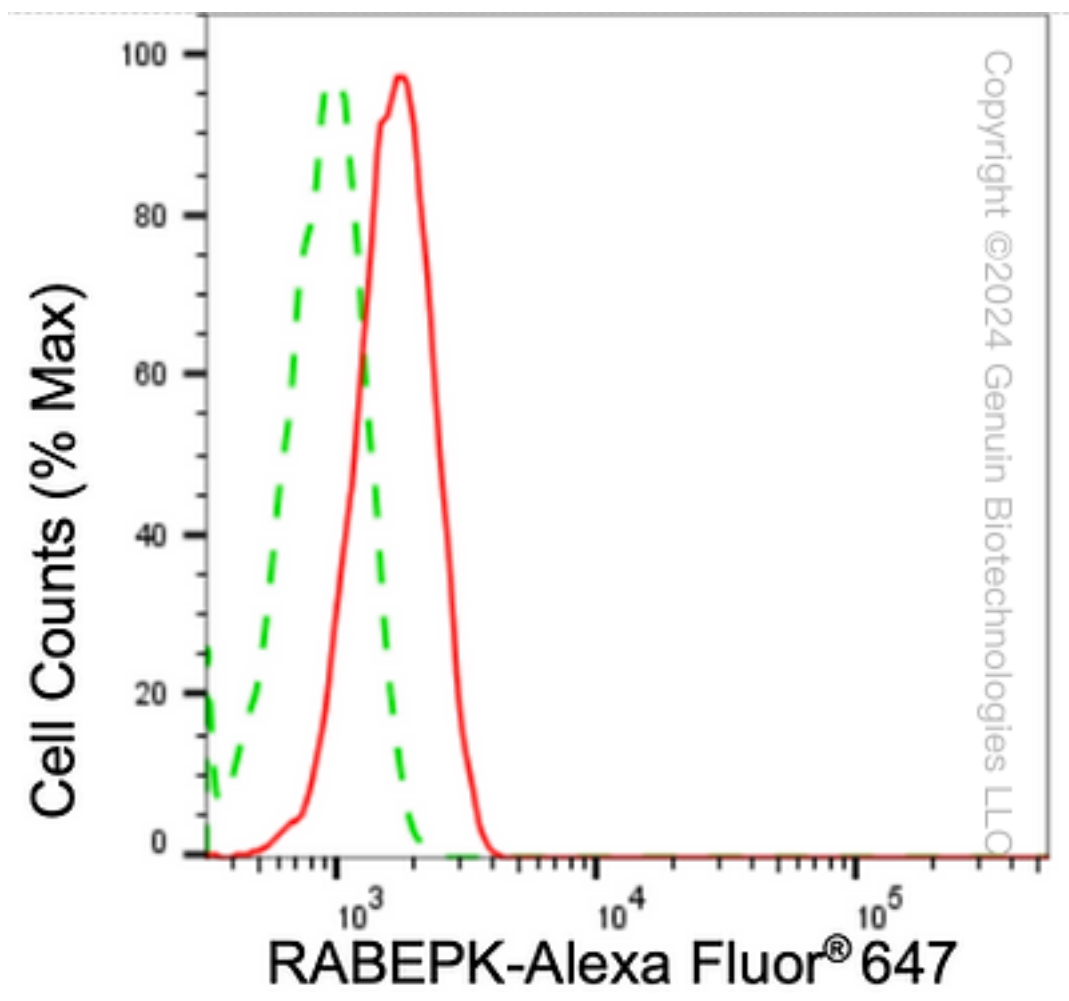
### SUPPORT

SUPPORT@GENUINBIOTECH.COM  
TEL: +1-540-855-7041

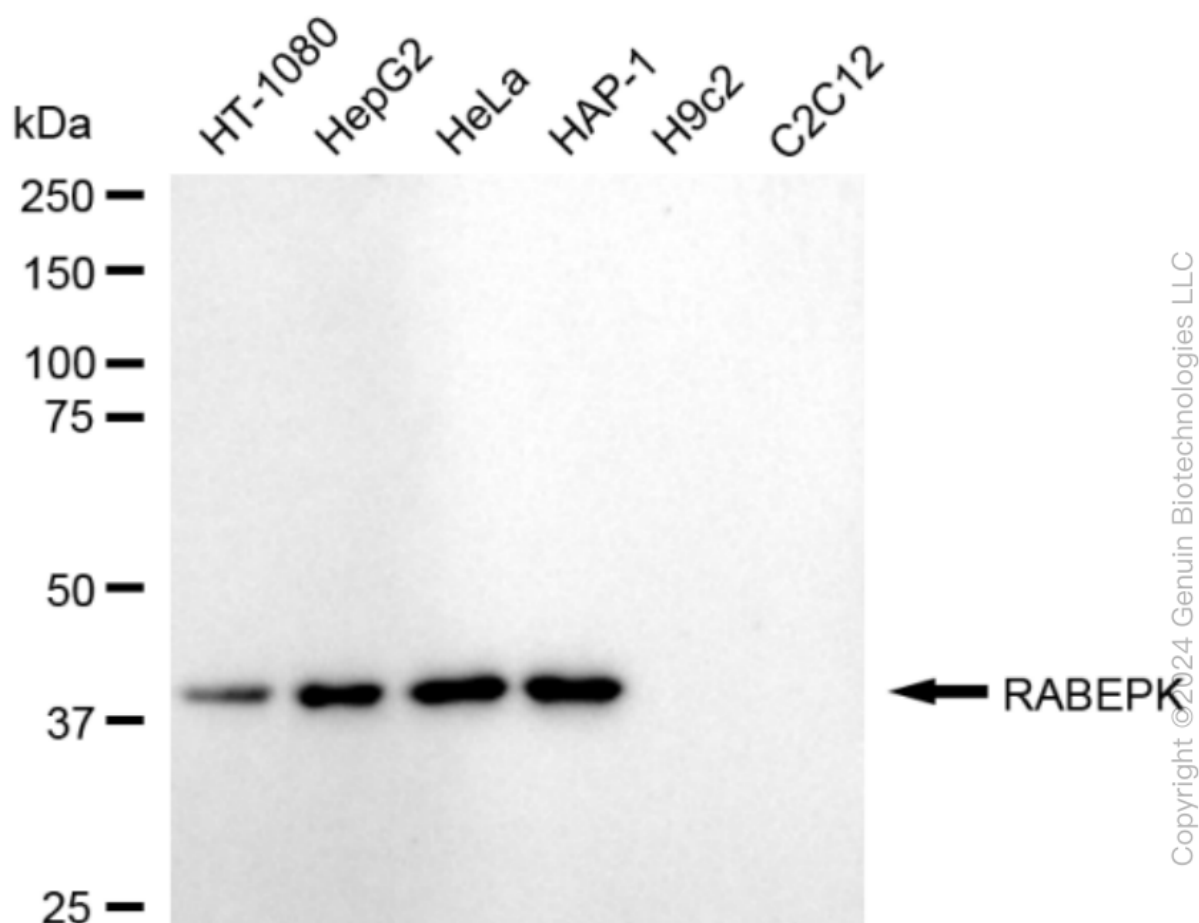
### ORDERS

SALES@GENUINBIOTECH.COM  
FAX: +1-540-855-7041

[WWW.GENUINBIOTECH.COM](http://WWW.GENUINBIOTECH.COM)



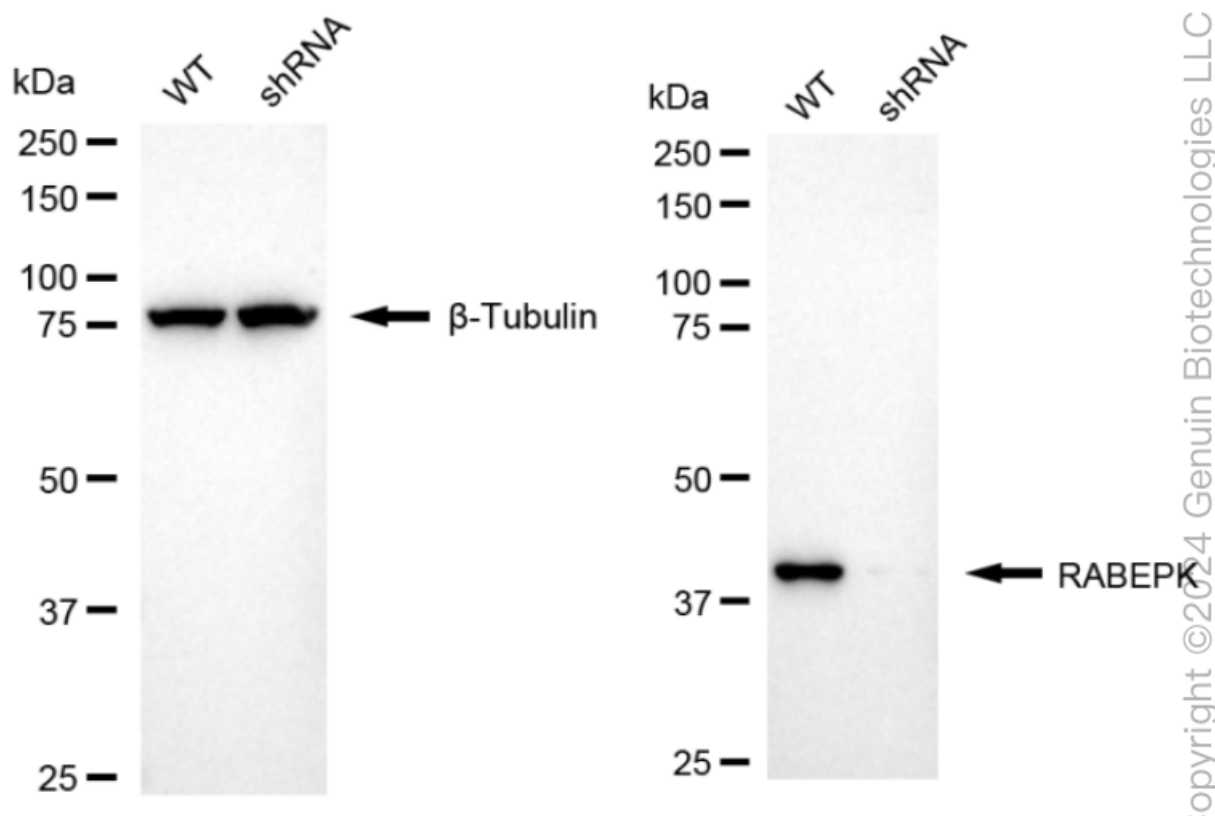
Flow cytometric analysis of RABEPK expression in HeLa cells using anti-RABEPK antibody (Cat#62590, 1:2,000). Green, isotype control; red, RABEPK.



Western blotting analysis using anti-RABEPK antibody (Cat#62590). Total cell lysates (30 µg) from various cell lines were loaded and separated by SDS-PAGE. The blot was incubated with anti-RABEPK antibody (Cat#62590, 1:5,000) and HRP-conjugated goat anti-rabbit secondary antibody (Cat#201, 1:20,000) respectively. Image was developed using FeQ™ ECL Substrate Kit (Cat#226).

## KD-Validated Anti-RABEPK Recombinant Rabbit Monoclonal Antibody

PAGE 4



Western blotting analysis using anti-RABEPK antibody (Cat#62590). RABEPK expression in wild type (WT) and RABEPK shRNA knockdown (KD) HeLa cells with 20  $\mu$ g of total cell lysates.  $\beta$ -Tubulin serves as a loading control. The blot was incubated with anti-RABEPK antibody (Cat#62590, 1:5,000) and HRP-conjugated goat anti-rabbit secondary antibody (Cat#201, 1:20,000) respectively. Image was developed using NaQ™ ECL Substrate Kit (Cat#716).

### SUPPORT

SUPPORT@GENUINBIOTECH.COM  
TEL: +1-540-855-7041

### ORDERS

SALES@GENUINBIOTECH.COM  
FAX: +1-540-855-7041

[WWW.GENUINBIOTECH.COM](http://WWW.GENUINBIOTECH.COM)