

KD-Validated Anti-Peptidylprolyl Isomerase D Recombinant Rabbit Monoclonal Antibody



Catalog #: 62594

Aliases

Peptidylprolyl Isomerase D; CYP-40; CypD; Peptidyl-Prolyl Cis-Trans Isomerase D; Cyclophilin-Related Protein; Cyclophilin 40; Rotamase D; EC 5.2.1.8; PPIase D; 40 KDa Peptidyl-Prolyl Cis-Trans Isomerase D; Peptidylprolyl Isomerase D (Cyclophilin D); 40 KDa Peptidyl-Prolyl Cis-Trans Isomerase; Testicular Tissue Protein Li 147; Cyclophilin-40; Cyclophilin D; CYP40; CYPD

Background

Gene Name: PPID

NCBI Gene Entry: [5481](#)

UniProt Entry: [Q08752](#)

Application Information

Molecular Weight: Predicted, 41 kDa, observed, 36 kDa

Clonality: Rabbit monoclonal antibody

Clone ID: 24GB1560

Species Reactivity: Human, mouse, rat

Applications Tested: Western blotting (WB), flow cytometry (FCM), immunocytochemistry (IC)

Immunogen

A synthesized peptide derived from human Cyclophilin 40

Isotype

Rabbit IgG

Storage Buffer

Supplied in PBS (pH 7.4) containing 50% glycerol, and 0.02% sodium azide.

Storage

Store at -20 °C for one year.

Recommended Dilutions

Western Blotting (WB): 1:1,000-1:5,000

Flow Cytometry (FCM): 1:2,000

Immunocytochemistry (IC): 1:100-1:1,000

SUPPORT

SUPPORT@GENUINBIOTECH.COM
TEL: +1-540-855-7041

ORDERS

SALES@GENUINBIOTECH.COM
FAX: +1-540-855-7041

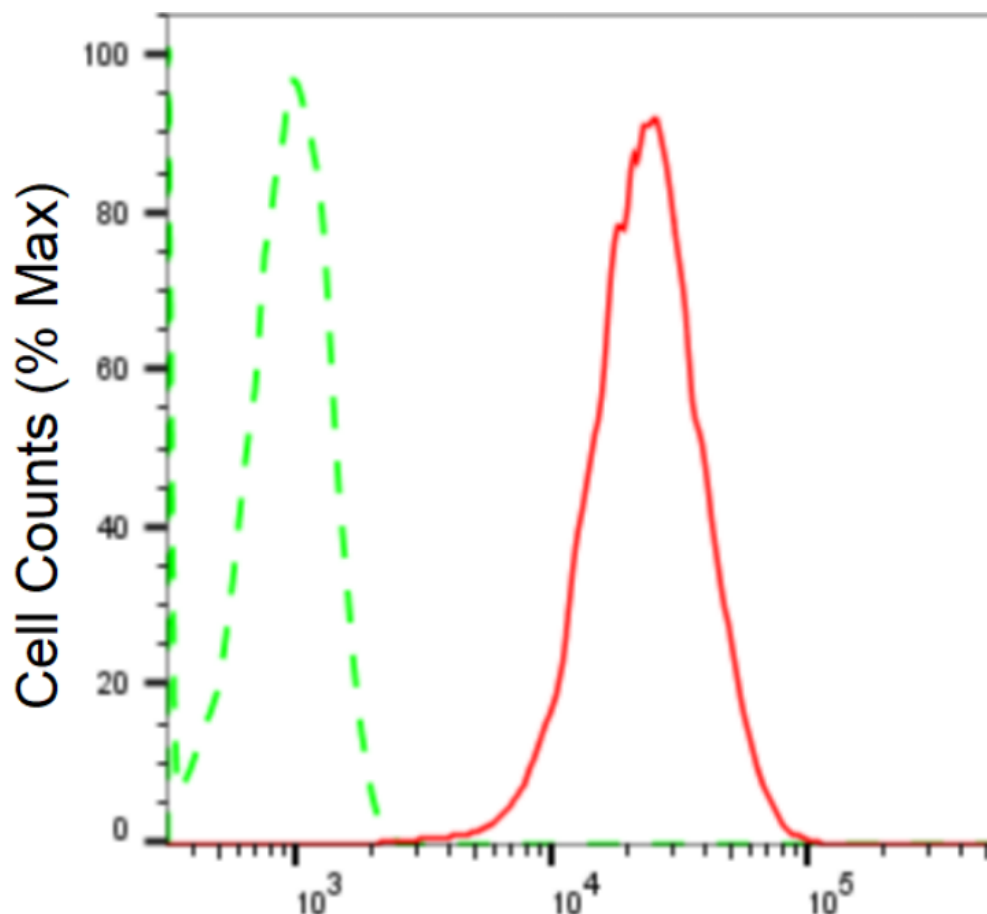
WWW.GENUINBIOTECH.COM

KD-Validated Anti-Peptidylprolyl Isomerase D Recombinant Rabbit Monoclonal Antibody

PAGE 2

Note: This product is for research use only.

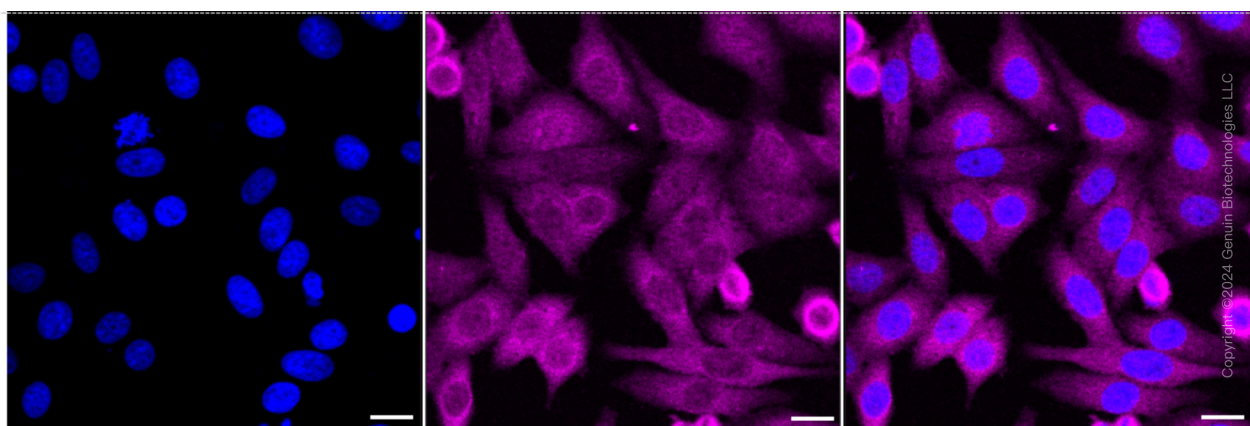
Validation Data



Copyright ©2024 Genuin Biotechnologies LLC

Peptidylprolyl isomerase D-Alexa Fluor® 647

Flow cytometric analysis of Peptidylprolyl isomerase D expression in HepG2 cells using anti-Peptidylprolyl isomerase D antibody (Cat#62594, 1:2,000). Green, isotype control; red, Peptidylprolyl isomerase D.



Copyright ©2024 Genuin Biotechnologies LLC

SUPPORT

SUPPORT@GENUINBIOTECH.COM
TEL: +1-540-855-7041

ORDERS

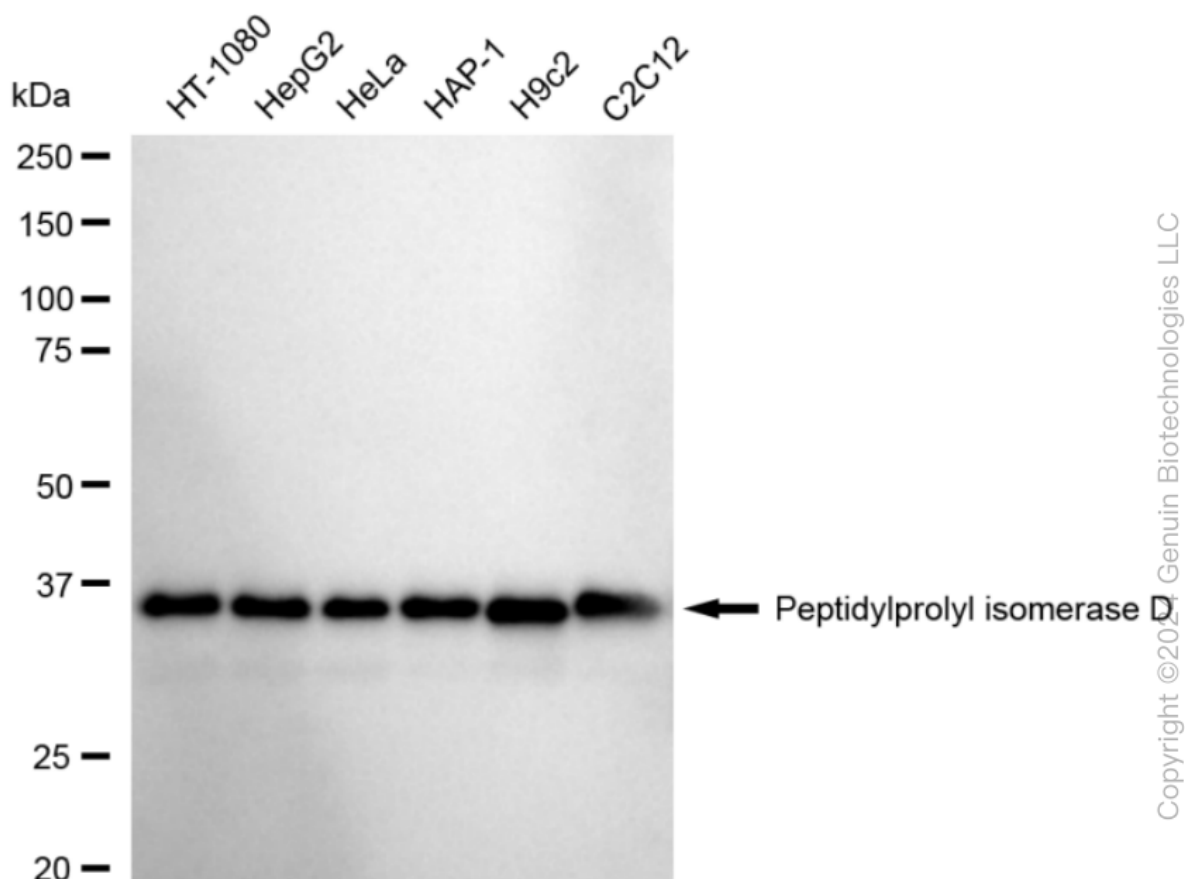
SALES@GENUINBIOTECH.COM
FAX: +1-540-855-7041

WWW.GENUINBIOTECH.COM

KD-Validated Anti-Peptidylprolyl Isomerase D Recombinant Rabbit Monoclonal Antibody

PAGE 3

Immunocytochemical staining of HepG2 cells with anti-Peptidylprolyl isomerase D antibody (Cat#62594, 1:1,000). Nuclei were stained blue with DAPI; Peptidylprolyl isomerase D was stained magenta with Alexa Fluor® 647. Images were taken using Leica stellaris 5. Protein abundance based on laser Intensity and smart gain: Medium. Scale bar: 20 μ m.



Western blotting analysis using anti-Peptidylprolyl isomerase D antibody (Cat#62594). Total cell lysates (30 μ g) from various cell lines were loaded and separated by SDS-PAGE. The blot was incubated with anti-Peptidylprolyl isomerase D antibody (Cat#62594, 1:5,000) and HRP-conjugated goat anti-rabbit secondary antibody (Cat#201, 1:20,000) respectively. Image was developed using FeQ™ ECL Substrate Kit (Cat#226).

SUPPORT

SUPPORT@GENUINBIOTECH.COM
TEL: +1-540-855-7041

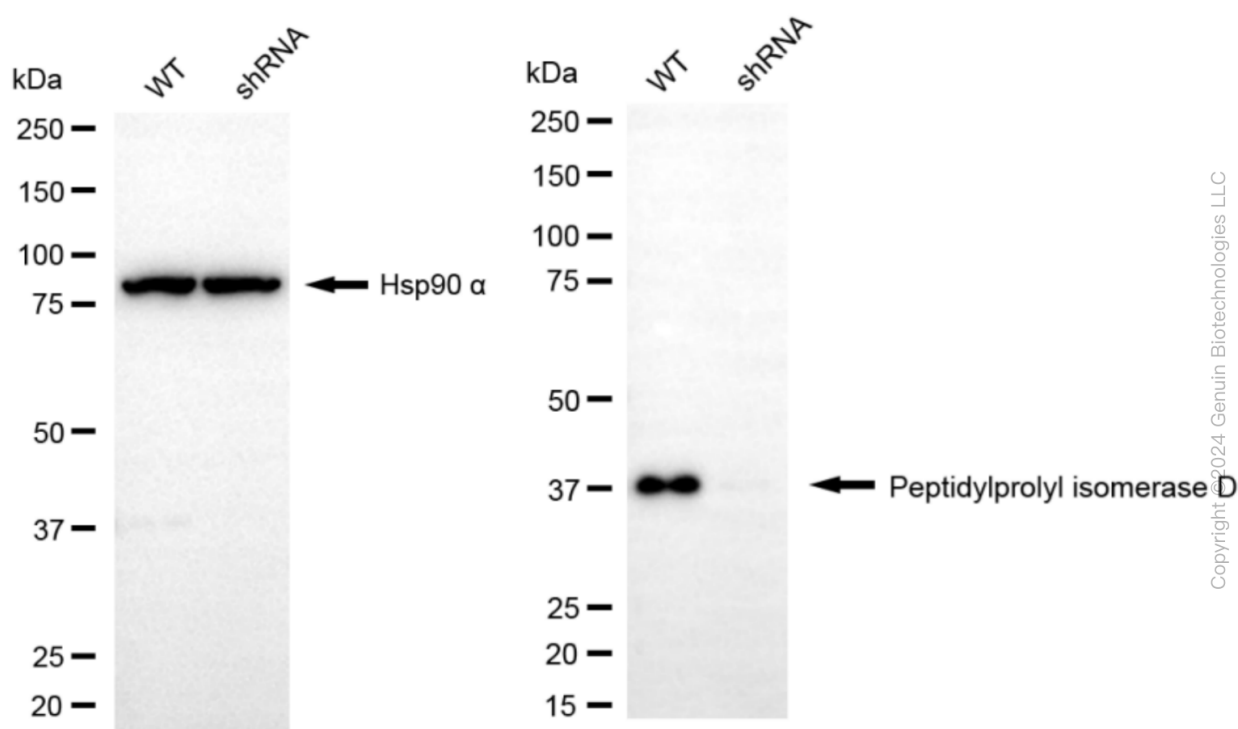
ORDERS

SALES@GENUINBIOTECH.COM
FAX: +1-540-855-7041

WWW.GENUINBIOTECH.COM

KD-Validated Anti-Peptidylprolyl Isomerase D Recombinant Rabbit Monoclonal Antibody

PAGE 4



Western blotting analysis using anti-Peptidylprolyl isomerase D antibody (Cat#62594). Peptidylprolyl isomerase D expression in wild type (WT) and Peptidylprolyl isomerase D shRNA knockdown (KD) HeLa cells with 20 µg of total cell lysates. Hsp90 α serves as a loading control. The blot was incubated with anti-Peptidylprolyl isomerase D antibody (Cat#62594, 1:5,000) and HRP-conjugated goat anti-rabbit secondary antibody (Cat#201, 1:20,000) respectively. Image was developed using NaQ™ ECL Substrate Kit (Cat#716).

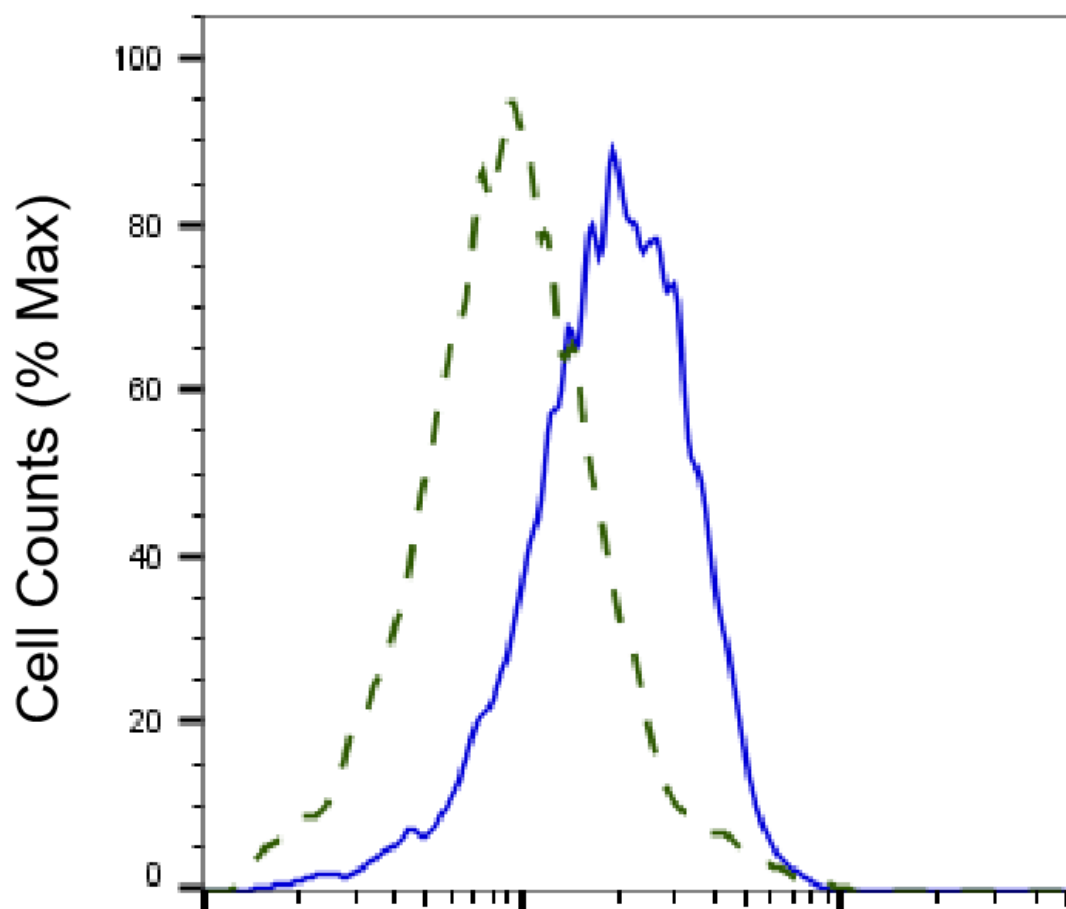
SUPPORT

SUPPORT@GENUINBIOTECH.COM
TEL: +1-540-855-7041

ORDERS

SALES@GENUINBIOTECH.COM
FAX: +1-540-855-7041

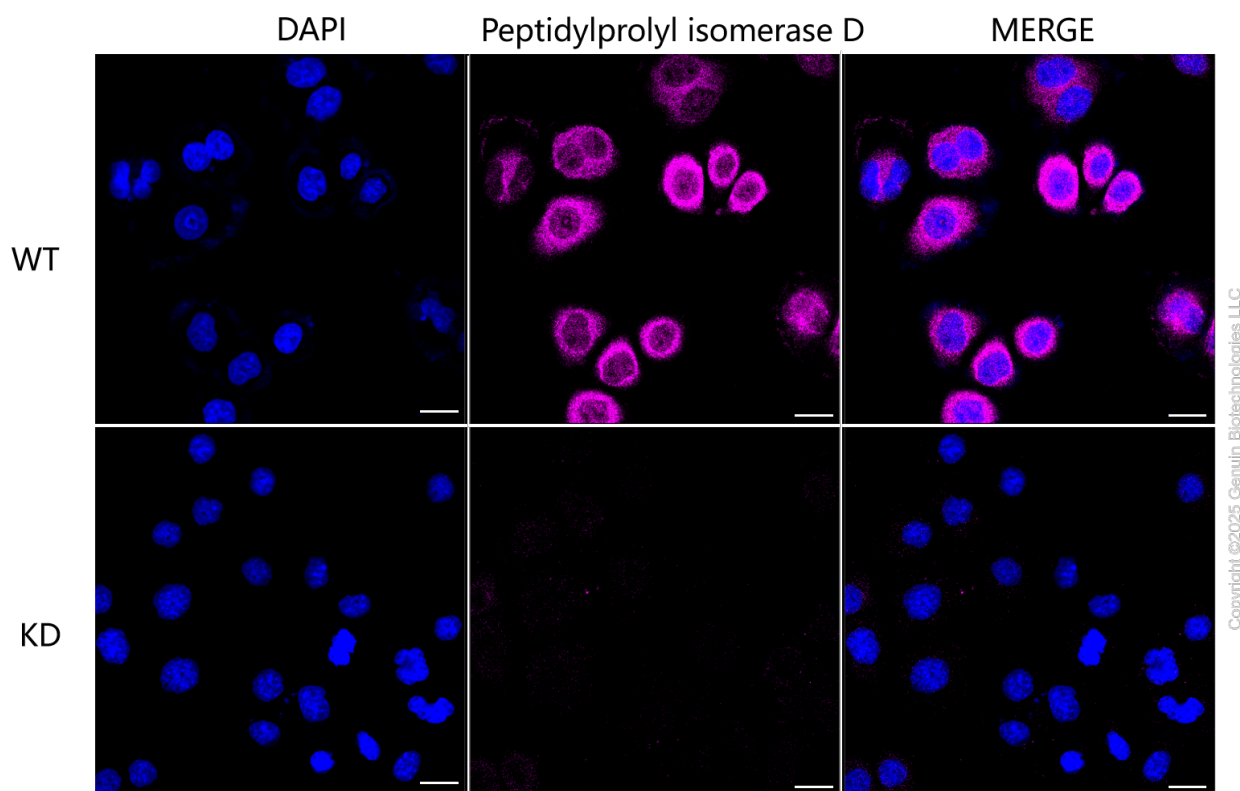
WWW.GENUINBIOTECH.COM



Copyright ©2025 Genuin Biotechnologies LLC

Peptidylprolyl isomerase D-Alexa Fluor® 647

Validation of Peptidylprolyl isomerase D knockdown using flow cytometry. Wild-type(WT, Blue) and knockdown(KD, Green) HeLa cells were stained with anti-Peptidylprolyl isomerase D antibody (Cat#62594, 1:2,000) and analyzed using BD flow cytometer.



Immunocytochemical staining of HeLa cells using anti-Peptidylprolyl isomerase D antibody (Cat#62594, 1:1,000), Top panel: wild-type (WT); Bottom panel: Peptidylprolyl isomerase D shRNA knockdown (KD). Nuclei were stained blue with DAPI; Peptidylprolyl isomerase D was stained magenta with Alexa Fluor® 647. Scale bar, 20 μ m. Permeabilization: Triton.