

KD-Validated Anti-PRMT6 Recombinant Rabbit Monoclonal Antibody



Catalog #: 62599

Aliases

Protein Arginine Methyltransferase 6; HRMT1L6; Heterogeneous Nuclear Ribonucleoprotein Methyltransferase-Like Protein 6; Histone-Arginine N-Methyltransferase PRMT6; Protein Arginine N-Methyltransferase 6; FLJ10559; HMT1 HnRNP Methyltransferase-Like 6 (S. Cerevisiae); HMT1 HnRNP Methyltransferase-Like 6; EC 2.1.1.319

Background

Gene Name: PRMT6

NCBI Gene Entry: [55170](#)

UniProt Entry: [Q96LA8](#)

Application Information

Molecular Weight: Predicted, 42 kDa, observed, 42 kDa

Clonality: Rabbit monoclonal antibody

Clone ID: 24GB1585

Species Reactivity: Human, mouse, rat

Applications Tested: Western blotting (WB), flow cytometry (FCM), immunocytochemistry (IC)

Immunogen

A synthesized peptide derived from human PRMT6

Isotype

Rabbit IgG

Storage Buffer

Supplied in PBS (pH 7.4) containing 50% glycerol, and 0.02% sodium azide.

Storage

Store at -20 °C for one year.

Recommended Dilutions

Western Blotting (WB): 1:1,000-1:5,000

Flow Cytometry (FCM): 1:2,000

Immunocytochemistry (IC): 1:100-1:1,000

SUPPORT

SUPPORT@GENUINBIOTECH.COM
TEL: +1-540-855-7041

ORDERS

SALES@GENUINBIOTECH.COM
FAX: +1-540-855-7041

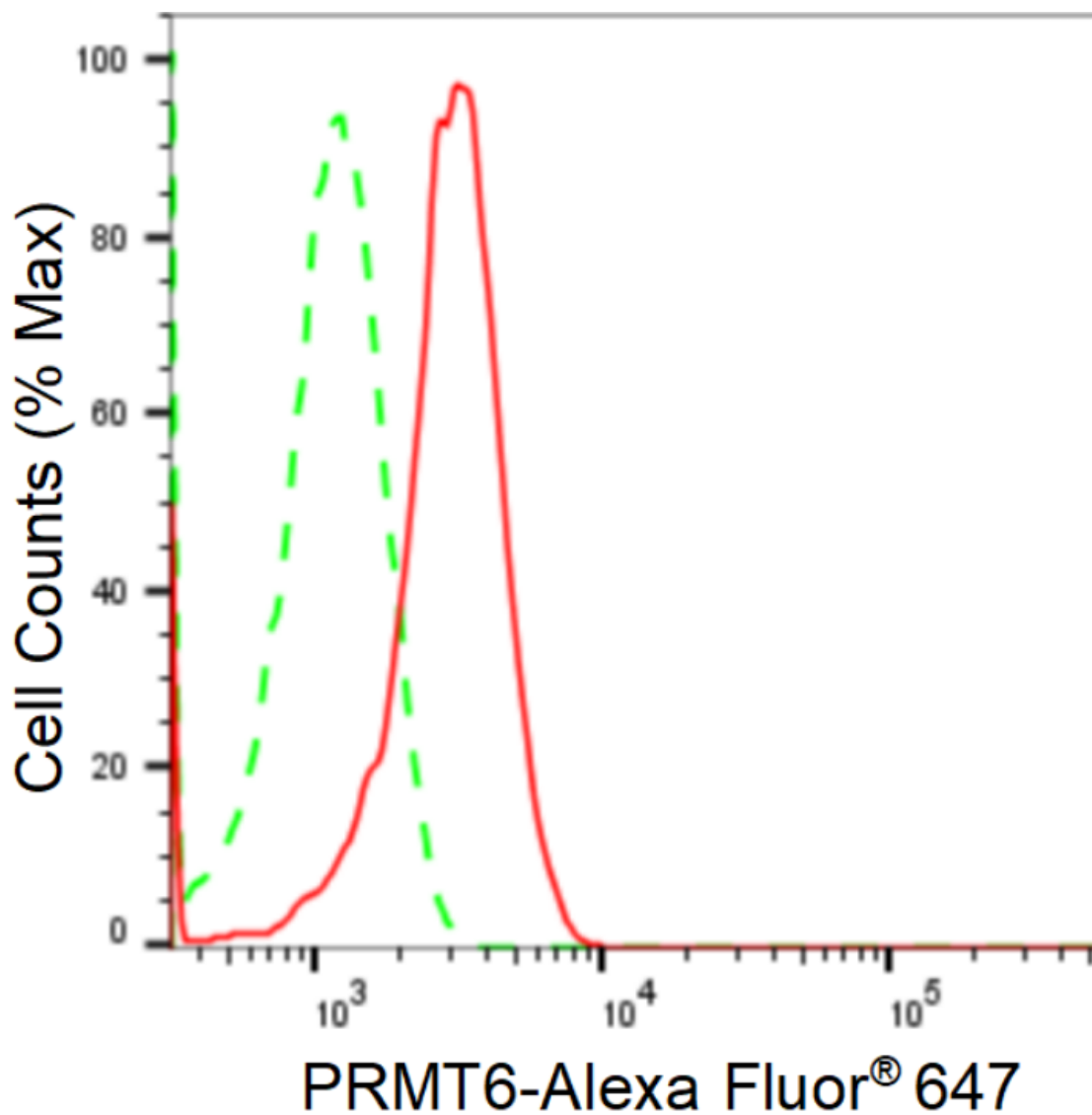
WWW.GENUINBIOTECH.COM

KD-Validated Anti-PRMT6 Recombinant Rabbit Monoclonal Antibody

PAGE 2

Note: This product is for research use only.

Validation Data



Copyright ©2024 Genuin Biotechnologies LLC

Flow cytometric analysis of PRMT6 expression in H9c2 cells using anti-PRMT6 antibody (Cat#62599, 1:2,000). Green, isotype control; red, PRMT6.

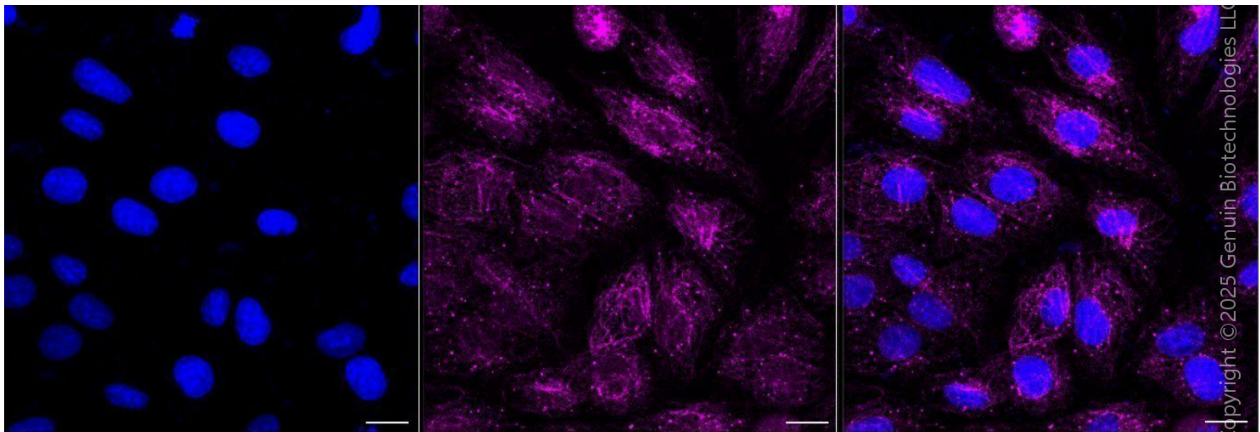
SUPPORT

SUPPORT@GENUINBIOTECH.COM
TEL: +1-540-855-7041

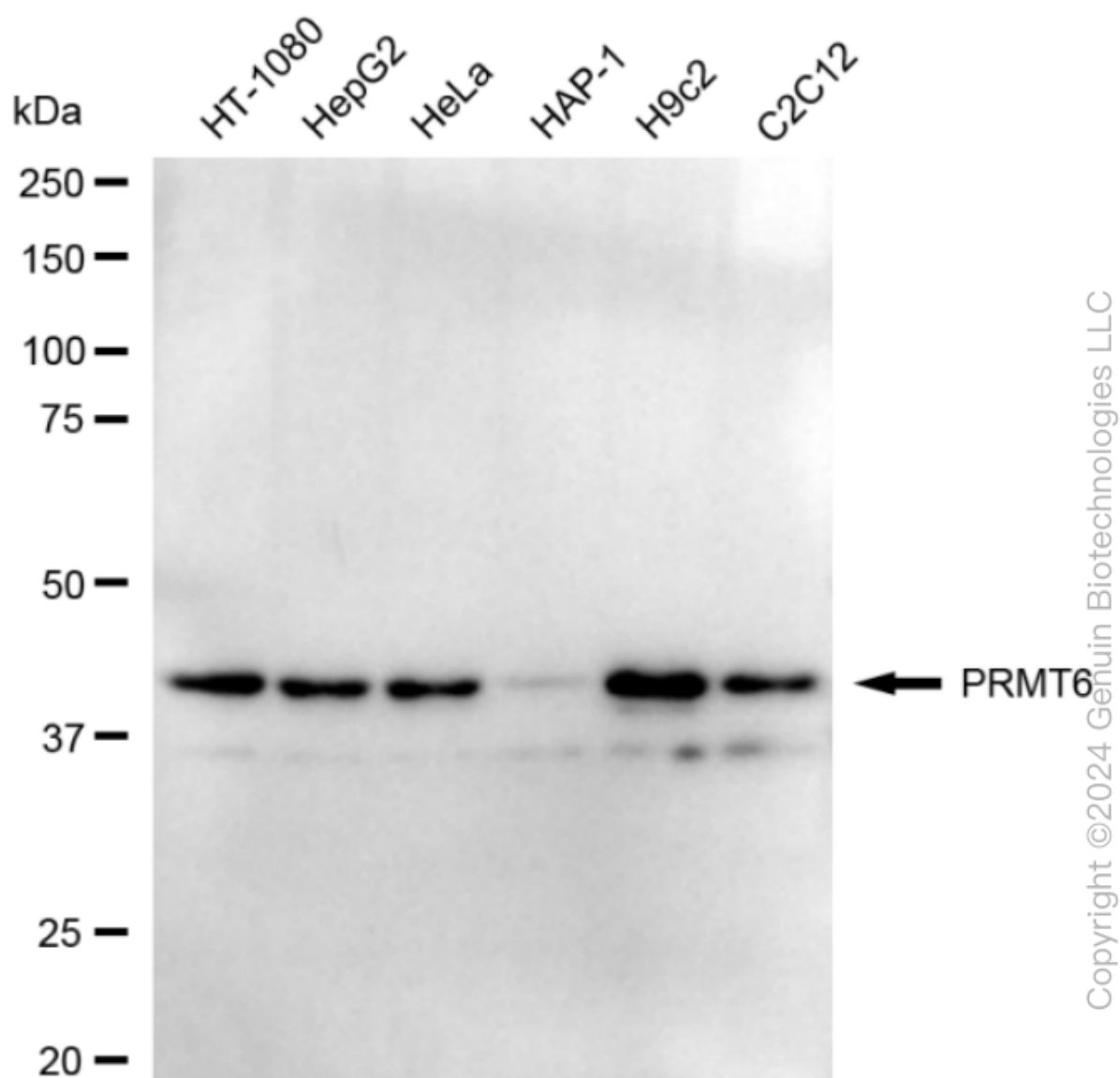
ORDERS

SALES@GENUINBIOTECH.COM
FAX: +1-540-855-7041

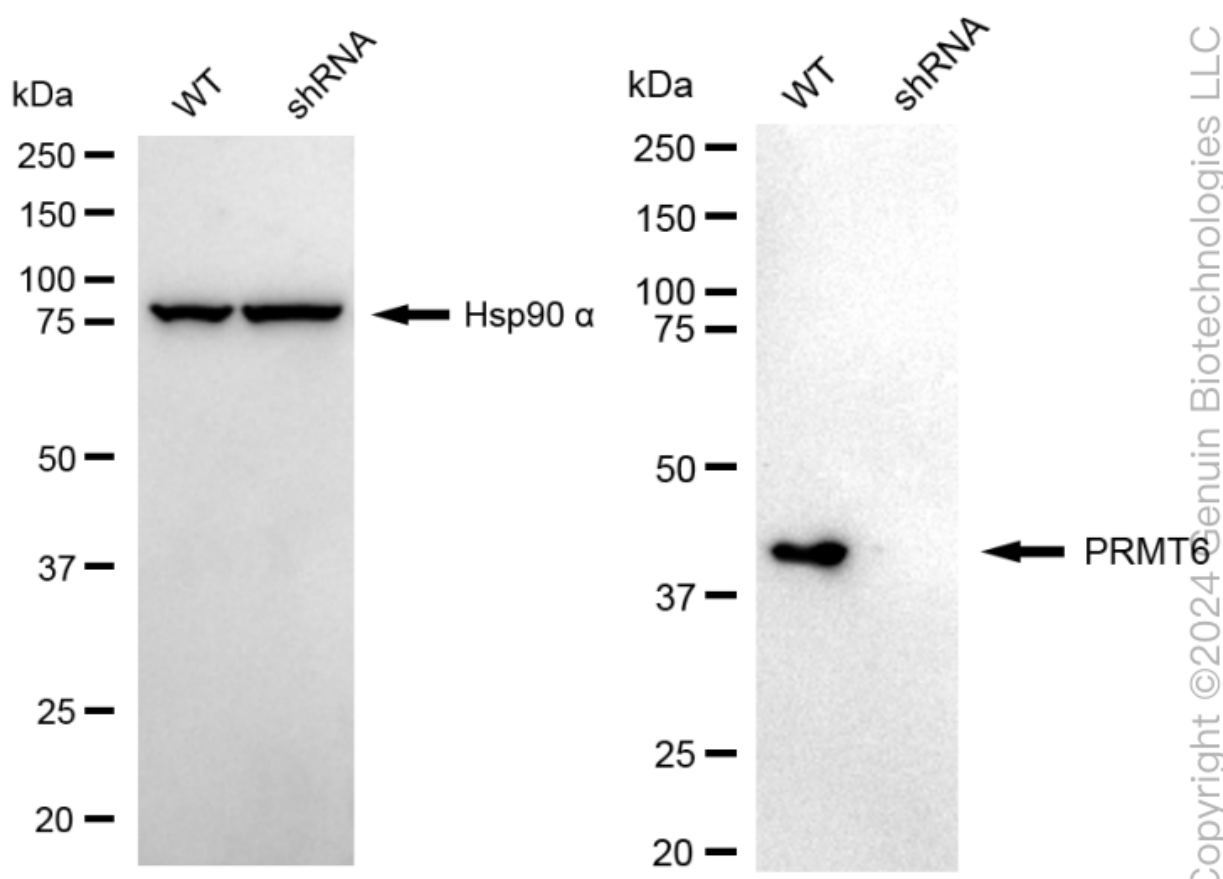
WWW.GENUINBIOTECH.COM



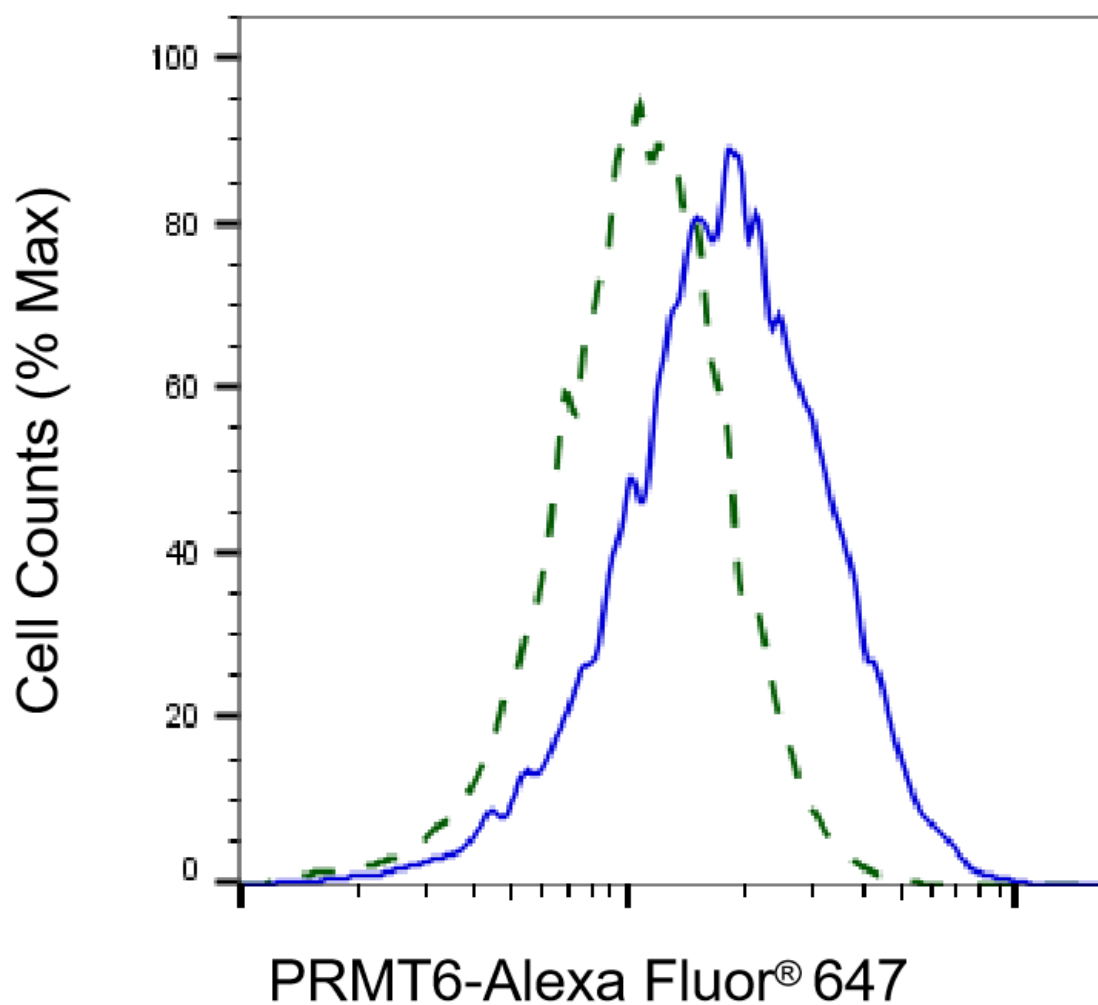
Immunocytochemical staining of H9c2 cells with anti-PRMT6 antibody (Cat#62599, 1:1,000) . Nuclei were stained blue with DAPI; PRMT6 was stained magenta with Alexa Fluor® 647. Images were taken using Leica stellaris 5. Protein abundance based on laser Intensity and smart gain: Medium. Scale bar, 20 μ m.



Western blotting analysis using anti-PRMT6 antibody (Cat#62599). Total cell lysates (30 μ g) from various cell lines were loaded and separated by SDS-PAGE. The blot was incubated with anti-PRMT6 antibody (Cat#62599, 1:5,000) and HRP-conjugated goat anti-rabbit secondary antibody (Cat#201, 1:20,000) respectively. Image was developed using FeQ™ ECL Substrate Kit (Cat#226).



Western blotting analysis using anti-PRMT6 antibody (Cat#62599). PRMT6 expression in wild type (WT) and PRMT6 shRNA knockdown (KD) HeLa cells with 20 µg of total cell lysates. Hsp90 α serves as a loading control. The blot was incubated with anti-PRMT6 antibody (Cat#62599, 1:5,000) and HRP-conjugated goat anti-rabbit secondary antibody (Cat#201, 1:20,000) respectively. Image was developed using NaQ™ ECL Substrate Kit (Cat#716).



Copyright ©2025 Genuin Biotechnologies LLC

Validation of PRMT6 knockdown using flow cytometry. Wild-type(WT, Blue) and knockdown(KD, Green) HeLa cells were stained with anti-PRMT6 antibody (Cat#62599, 1:2,000) and analyzed using BD flow cytometer.