

KD-Validated Anti-PICALM Recombinant Rabbit Monoclonal Antibody



Catalog #: 62606

Aliases

Phosphatidylinositol Binding Clathrin Assembly Protein; CALM; CLTH; Phosphatidylinositol-Binding Clathrin Assembly Protein; Clathrin Assembly Lymphoid Myeloid Leukemia Protein; LAP

Background

Gene Name: PICALM

NCBI Gene Entry: [8301](#)

UniProt Entry: [Q13492](#)

Application Information

Molecular Weight: Predicted, 71 kDa, observed, 71,69,66 kDa

Clonality: Rabbit monoclonal antibody

Clone ID: 24GB1620

Species Reactivity: Human

Applications Tested: Western blotting (WB), flow cytometry (FCM), immunocytochemistry (IC)

Immunogen

A synthesized peptide derived from human PICALM

Isotype

Rabbit IgG

Storage Buffer

Supplied in PBS (pH 7.4) containing 50% glycerol, and 0.02% sodium azide.

Storage

Store at -20 °C for one year.

Recommended Dilutions

Western Blotting (WB): 1:1,000-1:5,000

Flow Cytometry (FCM): 1:2,000

Immunocytochemistry (IC): 1:100-1:1,000

Note: This product is for research use only.

SUPPORT

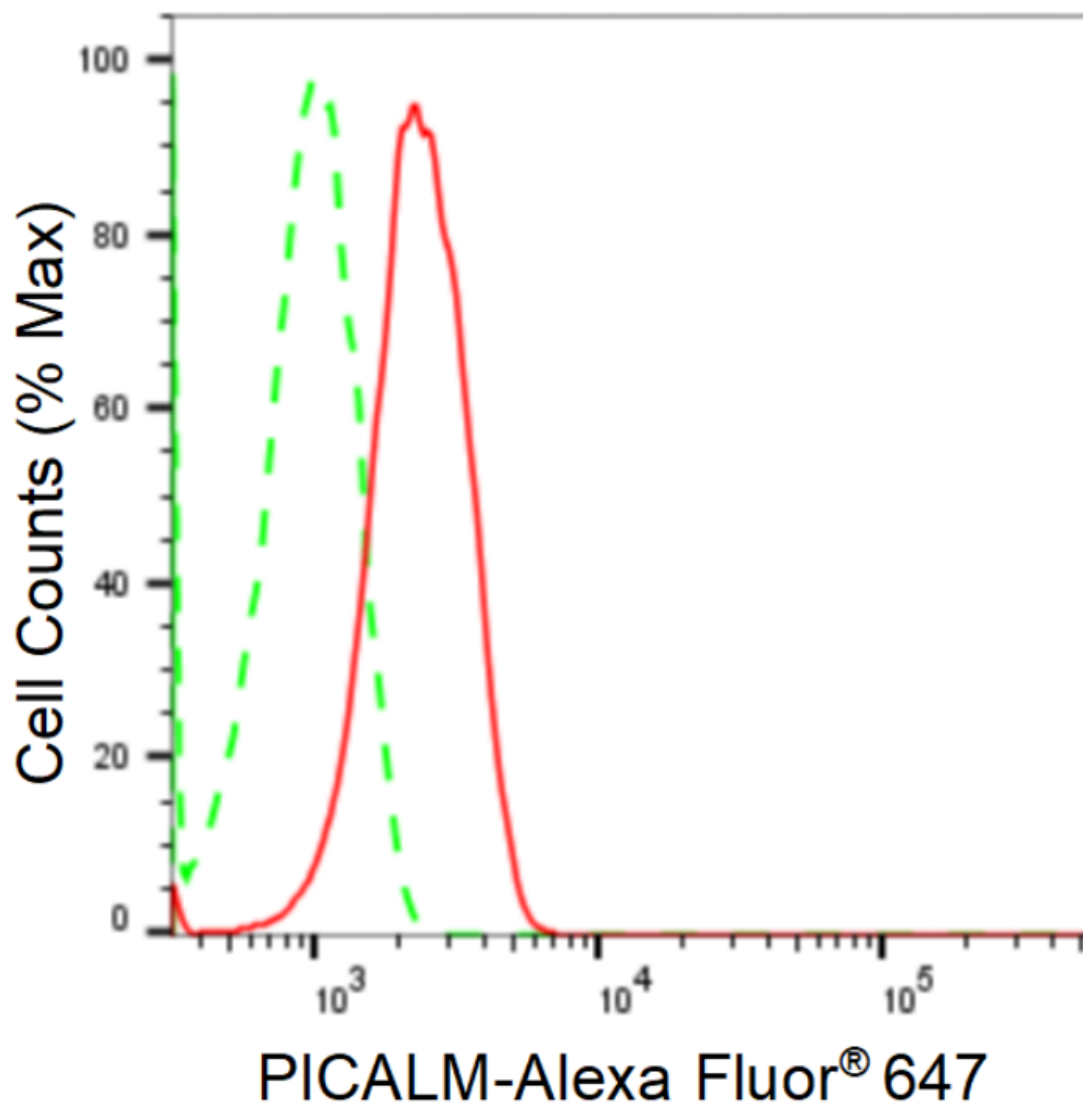
SUPPORT@GENUINBIOTECH.COM
TEL: +1-540-855-7041

ORDERS

SALES@GENUINBIOTECH.COM
FAX: +1-540-855-7041

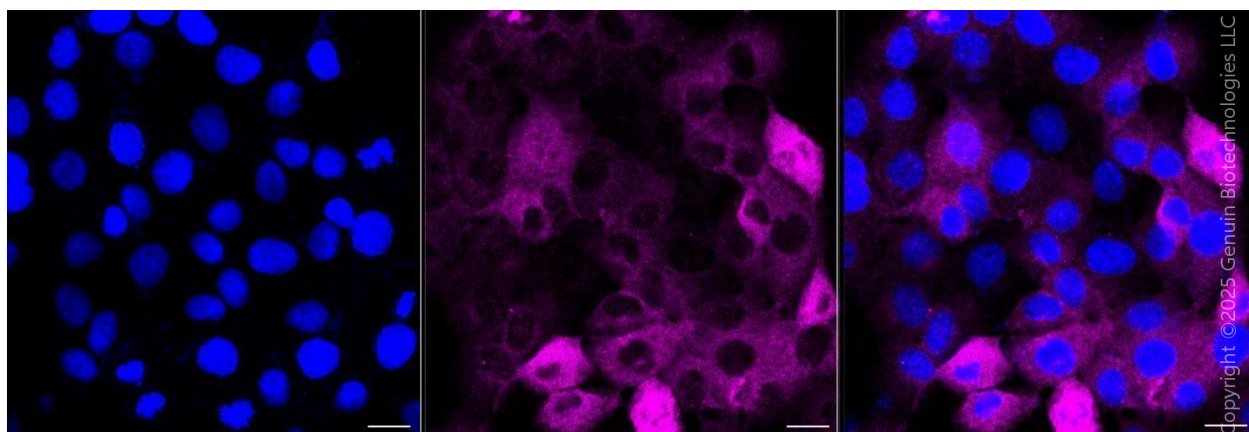
WWW.GENUINBIOTECH.COM

Validation Data

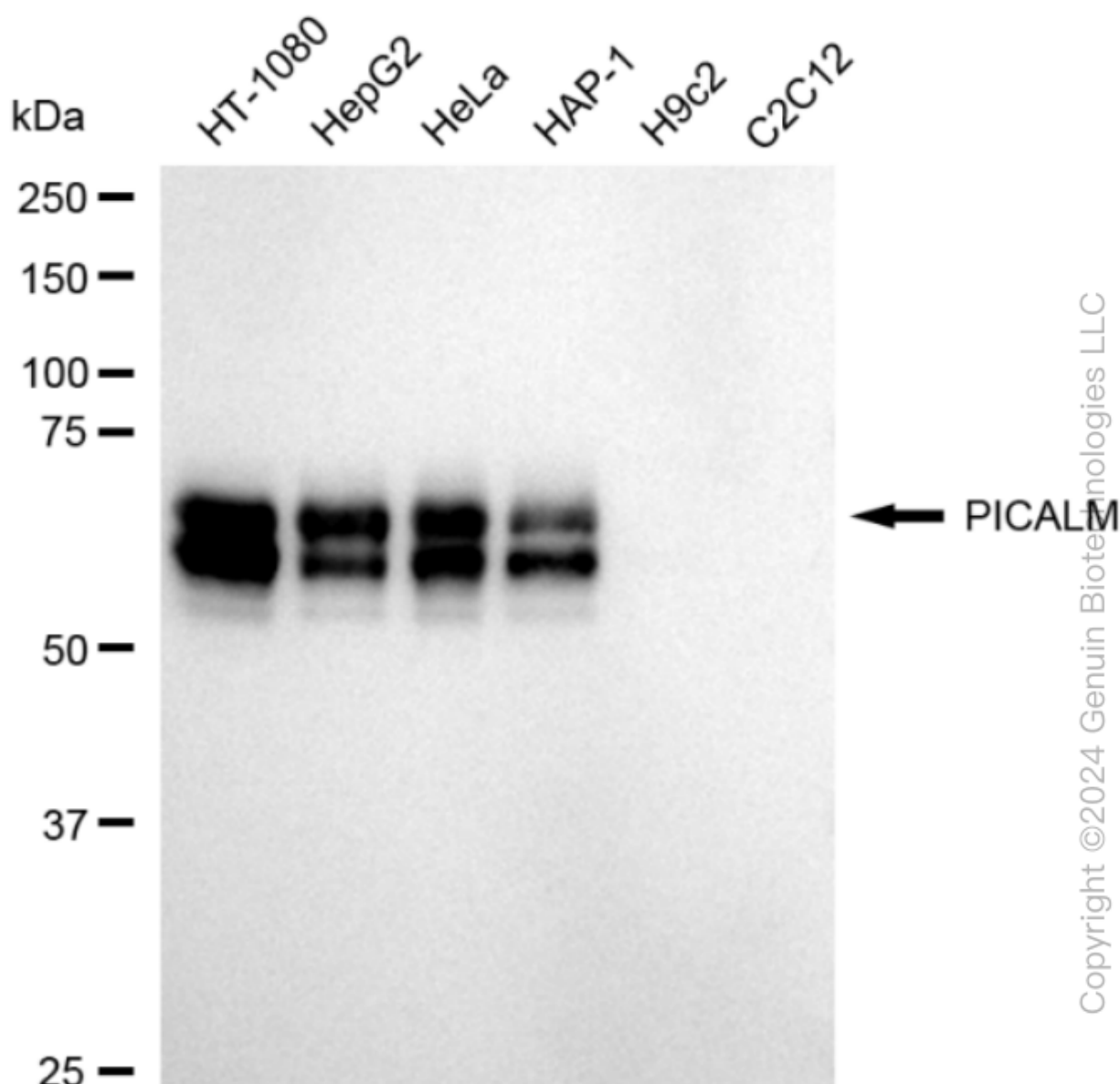


Copyright ©2024 Genuin Biotechnologies LLC

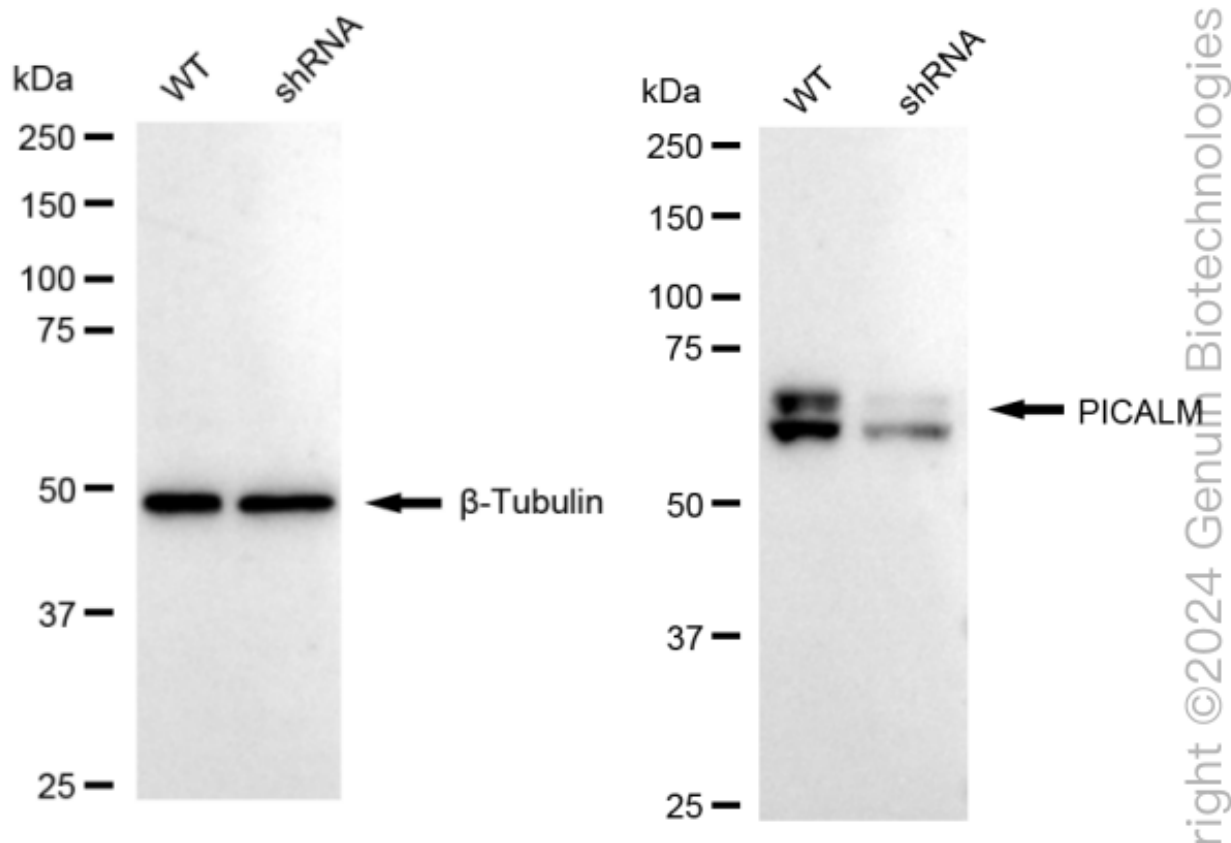
Flow cytometric analysis of PICALM expression in HT-1080 cells using anti-PICALM antibody (Cat#62606, 1:2,000). Green, isotype control; red, PICALM.



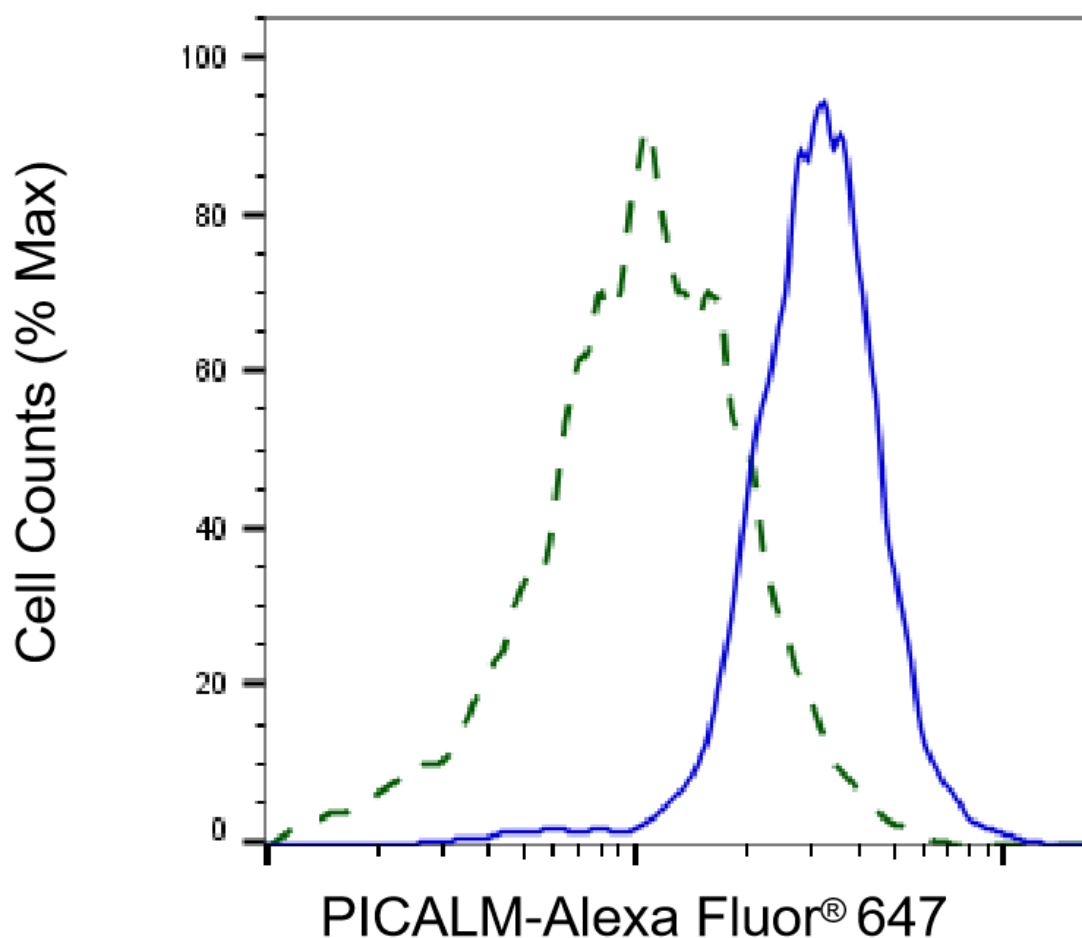
Immunocytochemical staining of HT-1080 cells with anti-PICALM antibody (Cat#62606, 1:1,000) . Nuclei were stained blue with DAPI; PICALM was stained magenta with Alexa Fluor® 647. Images were taken using Leica stellaris 5. Protein abundance based on laser Intensity and smart gain: Medium. Scale bar, 20 μ m.



Western blotting analysis using anti-PICALM antibody (Cat#62606). Total cell lysates (30 µg) from various cell lines were loaded and separated by SDS-PAGE. The blot was incubated with anti-PICALM antibody (Cat#62606, 1:5,000) and HRP-conjugated goat anti-rabbit secondary antibody (Cat#201, 1:20,000) respectively. Image was developed using FeQ™ ECL Substrate Kit (Cat#226).



Western blotting analysis using anti-PICALM antibody (Cat#62606). PICALM expression in wild type (WT) and PICALM shRNA knockdown (KD) HeLa cells with 20 μ g of total cell lysates. β -Tubulin serves as a loading control. The blot was incubated with anti-PICALM antibody (Cat#62606, 1:5,000) and HRP-conjugated goat anti-rabbit secondary antibody (Cat#201, 1:20,000) respectively. Image was developed using NaQ™ ECL Substrate Kit (Cat#716).



Copyright ©2025 Genuin Biotechnologies LLC

Validation of PICALM knockdown using flow cytometry. Wild-type(WT, Blue) and knockdown(KD, Green) HeLa cells were stained with anti-PICALM antibody (Cat#62606, 1:2,000) and analyzed using BD flow cytometer.