

KD-Validated Anti-PERP Recombinant Rabbit Monoclonal Antibody



Catalog #: 62608

Aliases

P53 Apoptosis Effector Related To PMP22; KRTCAP1; PIGPC1; KCP1; THW; DJ496H19.1; P53 Apoptosis Effector Related To PMP-22; Keratinocyte-Associated Protein 1; PERP, TP53 Apoptosis Effector; P53-Induced Protein PIGPC1; Transmembrane Protein THW; KCP-1; Keratinocytes Associated Protein 1; Keratinocyte Associated Protein 1; 1110017A08Rik; EKVP7; OLMS2

Background

Gene Name: PERP

NCBI Gene Entry: [64065](#)

UniProt Entry: [Q96FX8](#)

Application Information

Molecular Weight: Predicted, 21 kDa, observed, 21 kDa

Clonality: Rabbit monoclonal antibody

Clone ID: 24GB1630

Species Reactivity: Human

Applications Tested: Western blotting (WB), flow cytometry (FCM)

Immunogen

A synthesized peptide derived from human PERP

Isotype

Rabbit IgG

Storage Buffer

Supplied in PBS (pH 7.4) containing 50% glycerol, and 0.02% sodium azide.

Storage

Store at -20 °C for one year.

Recommended Dilutions

Western Blotting (WB): 1:1,000-1:5,000

Flow Cytometry (FCM): 1:2,000

SUPPORT

SUPPORT@GENUINBIOTECH.COM
TEL: +1-540-855-7041

ORDERS

SALES@GENUINBIOTECH.COM
FAX: +1-540-855-7041

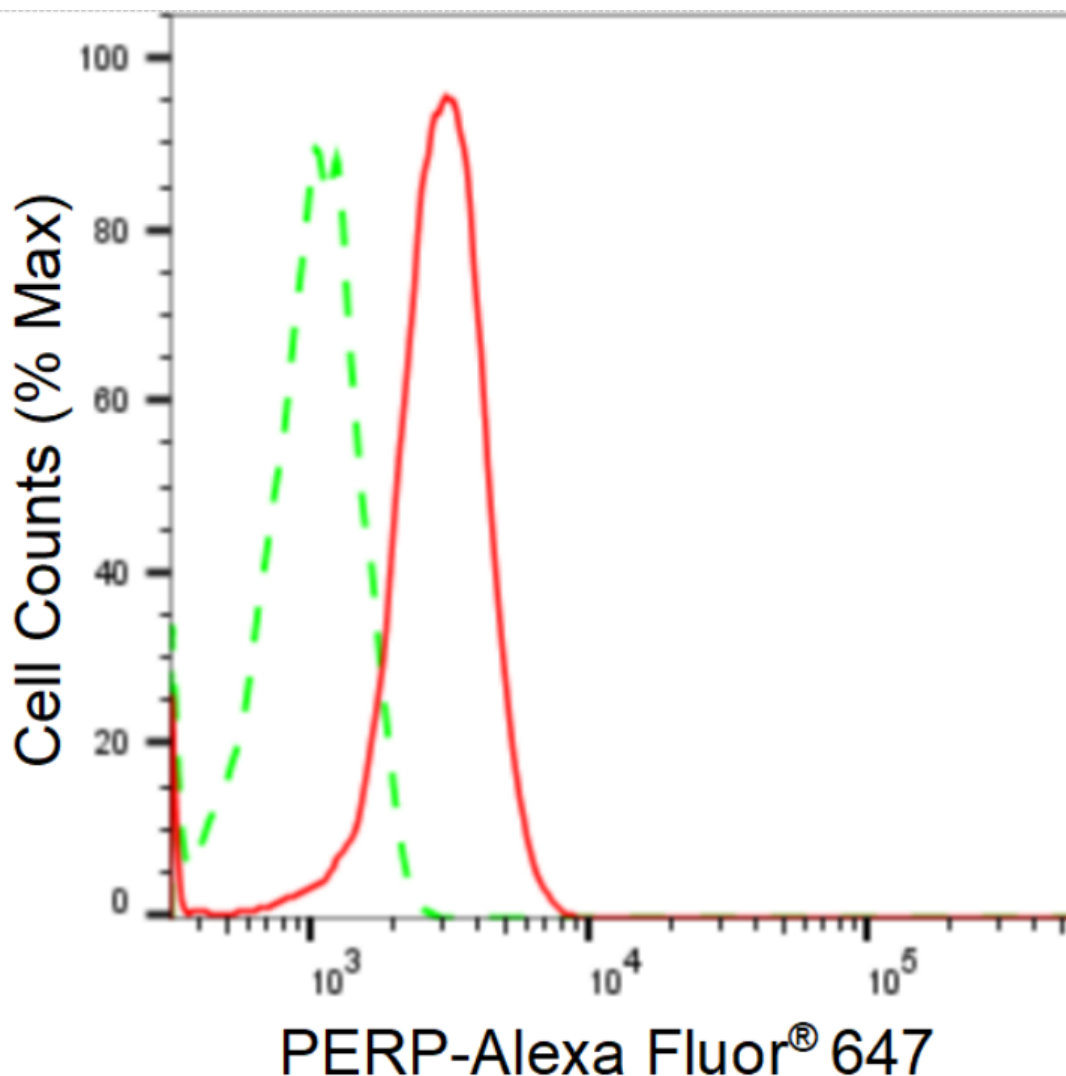
WWW.GENUINBIOTECH.COM

KD-Validated Anti-PERP Recombinant Rabbit Monoclonal Antibody

PAGE 2

Note: This product is for research use only.

Validation Data



Copyright ©2024 Genuin Biotechnologies LLC

Flow cytometric analysis of PERP expression in HeLa cells using anti-PERP antibody (Cat#62608, 1:2,000). Green, isotype control; red, PERP.

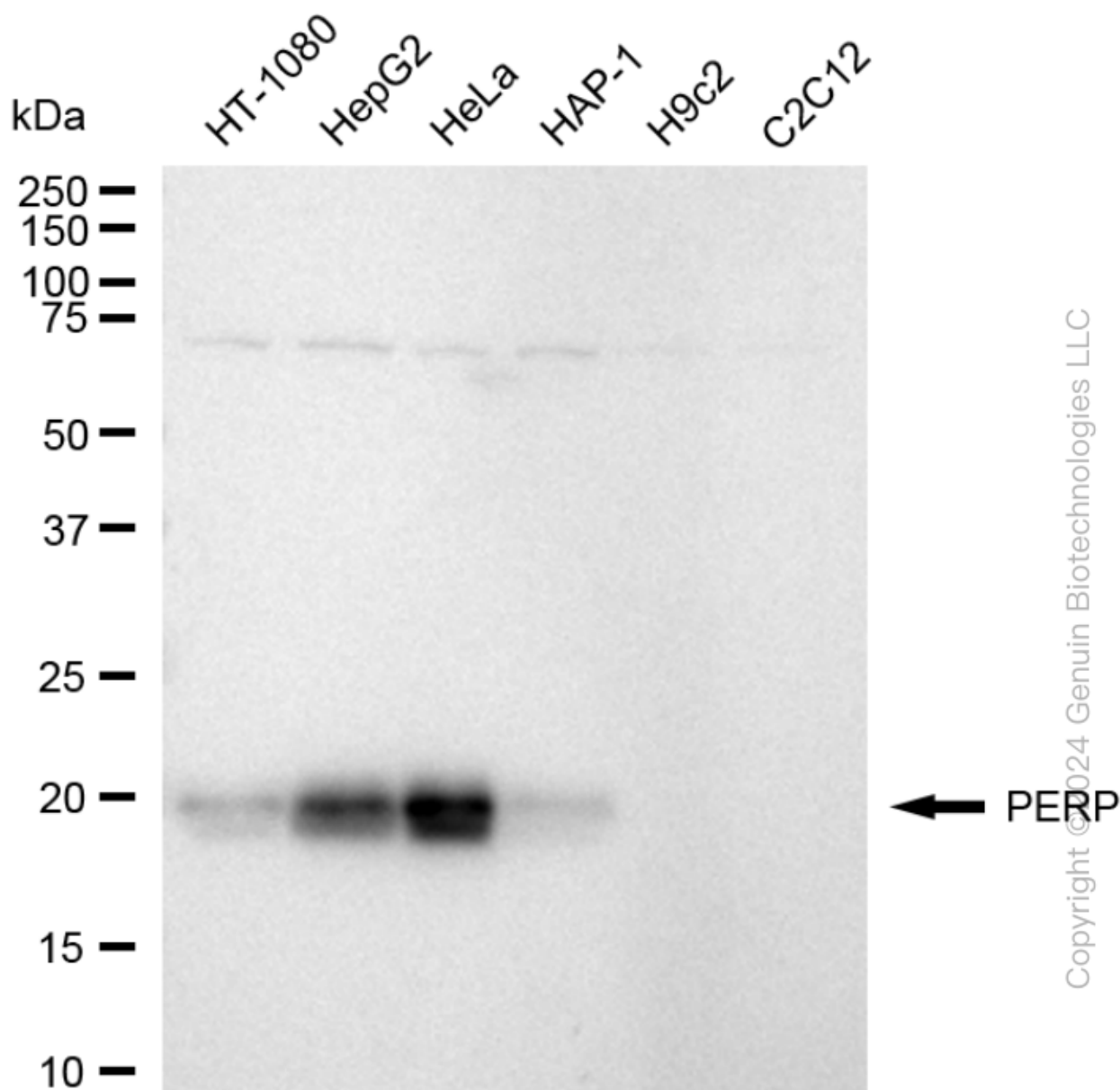
SUPPORT

SUPPORT@GENUINBIOTECH.COM
TEL: +1-540-855-7041

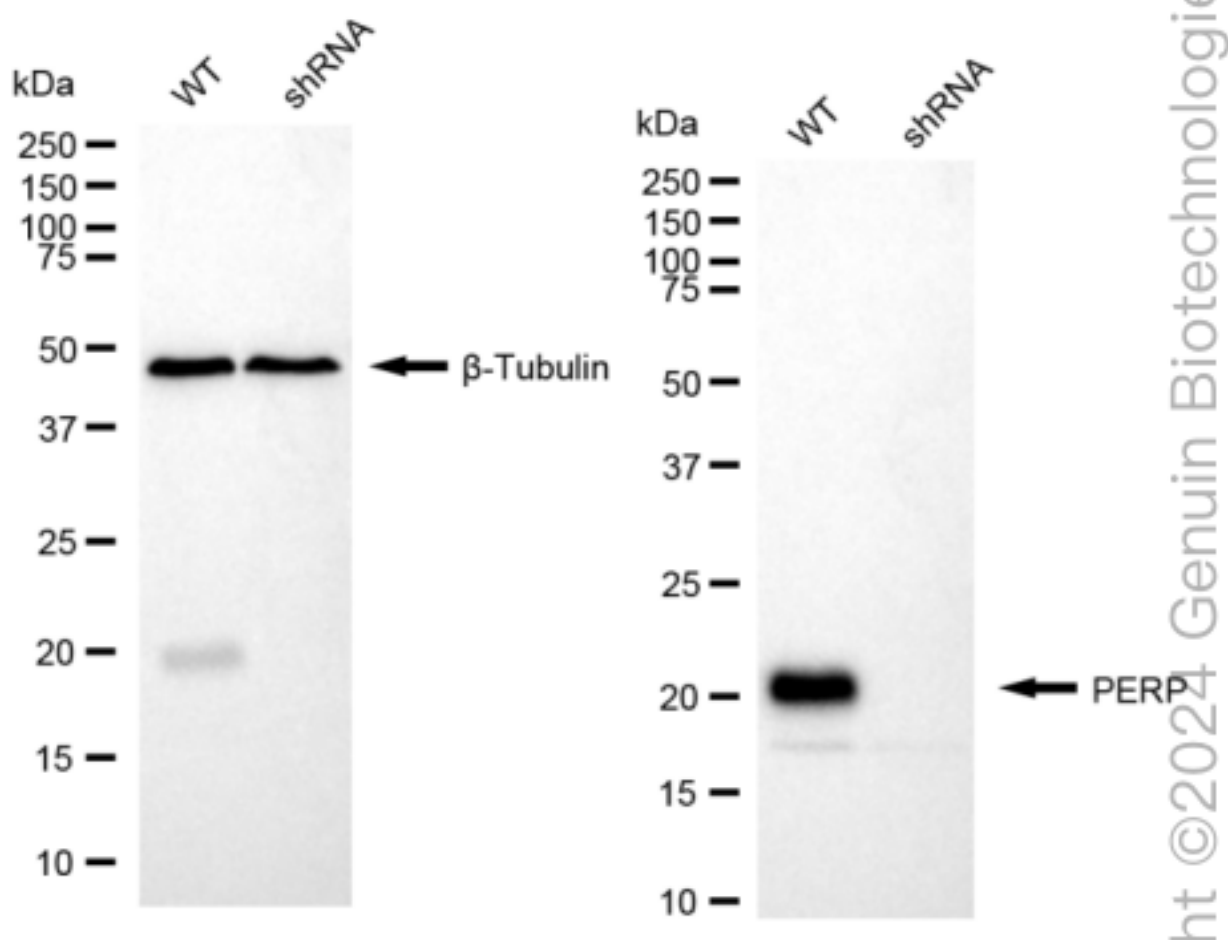
ORDERS

SALES@GENUINBIOTECH.COM
FAX: +1-540-855-7041

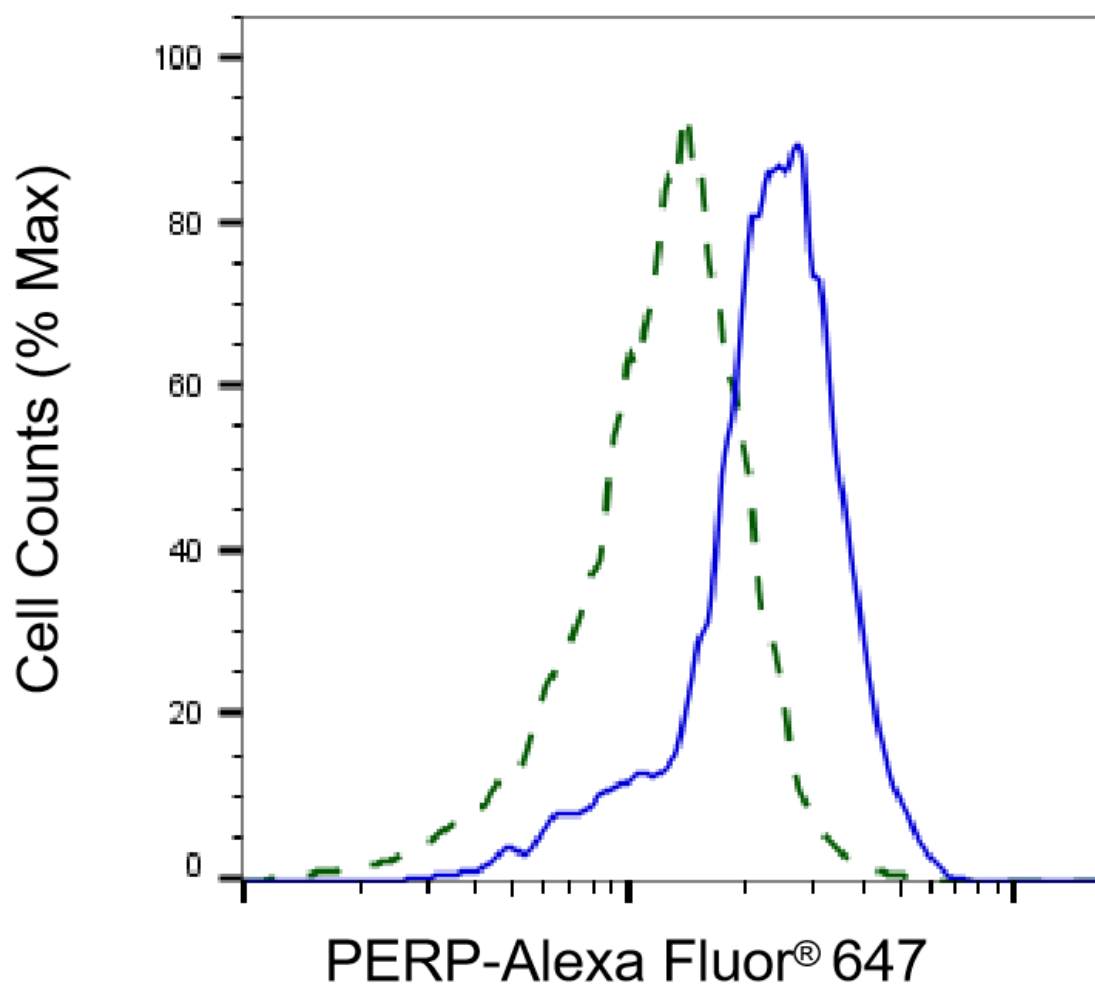
WWW.GENUINBIOTECH.COM



Western blotting analysis using anti-PERP antibody (Cat#62608). Total cell lysates (30 μ g) from various cell lines were loaded and separated by SDS-PAGE. The blot was incubated with anti-PERP antibody (Cat#62608, 1:5,000) and HRP-conjugated goat anti-rabbit secondary antibody (Cat#201, 1:20,000) respectively. Image was developed using FeQ™ ECL Substrate Kit (Cat#226).



Western blotting analysis using anti-PERP antibody (Cat#62608). PERP expression in wild type (WT) and PERP shRNA knockdown (KD) HeLa cells with 20 µg of total cell lysates. β-Tubulin serves as a loading control. The blot was incubated with anti-PERP antibody (Cat#62608, 1:5,000) and HRP-conjugated goat anti-rabbit secondary antibody (Cat#201, 1:20,000) respectively. Image was developed using NaQ™ ECL Substrate Kit (Cat#716).



Copyright ©2025 Genuin Biotechnologies LLC

Validation of PERP knockdown using flow cytometry. Wild-type(WT, Blue) and knockdown(KD, Green) HeLa cells were stained with anti-PERP antibody (Cat#62608, 1:2,000) and analyzed using BD flow cytometer.