

KD-Validated Anti-Sulfite Oxidase Recombinant Rabbit Monoclonal Antibody



Catalog #: 62620

Aliases

SUOX; Sulfite Oxidase; Sulfite Oxidase, Mitochondrial; EC 1.8.3.1

Background

Gene Name: SUOX

NCBI Gene Entry: [6821](#)

UniProt Entry: [P51687](#)

Application Information

Molecular Weight: Predicted, 60 kDa, observed, 60 kDa

Clonality: Rabbit monoclonal antibody

Clone ID: 24GB1790

Species Reactivity: Human

Applications Tested: Western blotting (WB), flow cytometry (FCM), immunocytochemistry (IC)

Immunogen

A synthesized peptide derived from human SUOX

Isotype

Rabbit IgG

Storage Buffer

Supplied in PBS (pH 7.4) containing 50% glycerol, and 0.02% sodium azide.

Storage

Store at -20 °C for one year.

Recommended Dilutions

Western Blotting (WB): 1:1,000-1:5,000

Flow Cytometry (FCM): 1:2,000

Immunocytochemistry (IC): 1:100-1:1,000

Note: This product is for research use only.

Validation Data

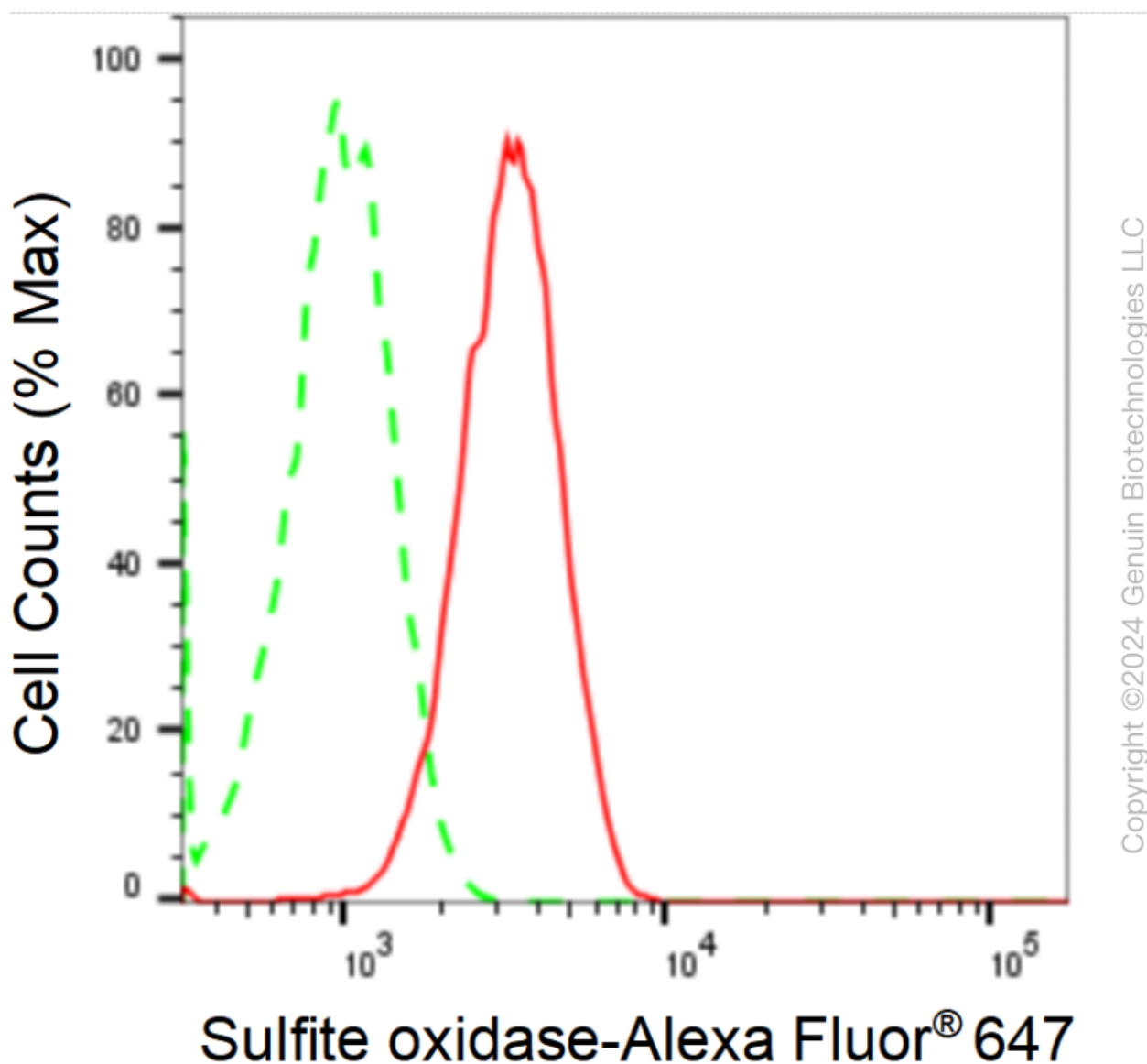
SUPPORT

SUPPORT@GENUINBIOTECH.COM
TEL: +1-540-855-7041

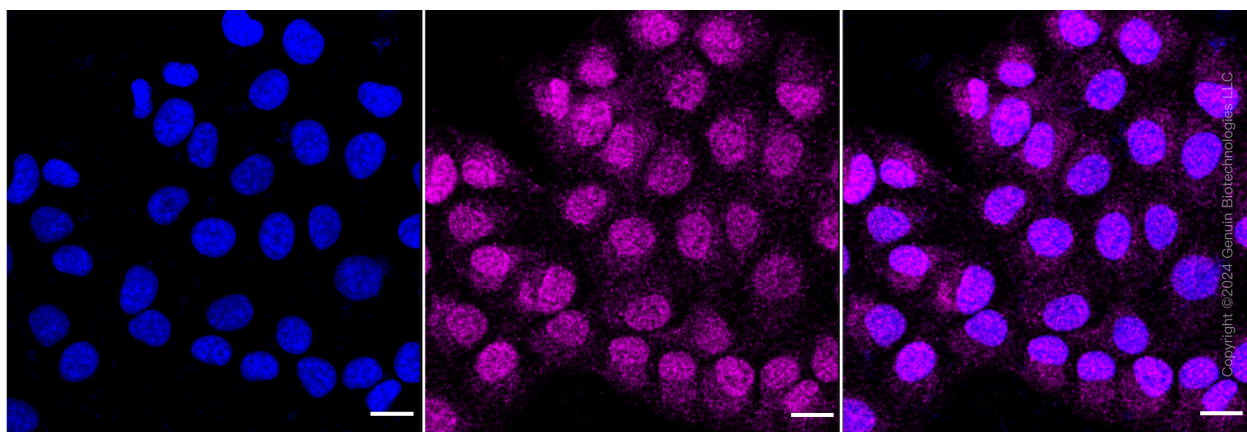
ORDERS

SALES@GENUINBIOTECH.COM
FAX: +1-540-855-7041

WWW.GENUINBIOTECH.COM



Flow cytometric analysis of Sulfite oxidase expression in HT-1080 cells using anti-Sulfite oxidase antibody (Cat#62620, 1:2,000). Green, isotype control; red, Sulfite oxidase.



SUPPORT

SUPPORT@GENUINBIOTECH.COM
TEL: +1-540-855-7041

ORDERS

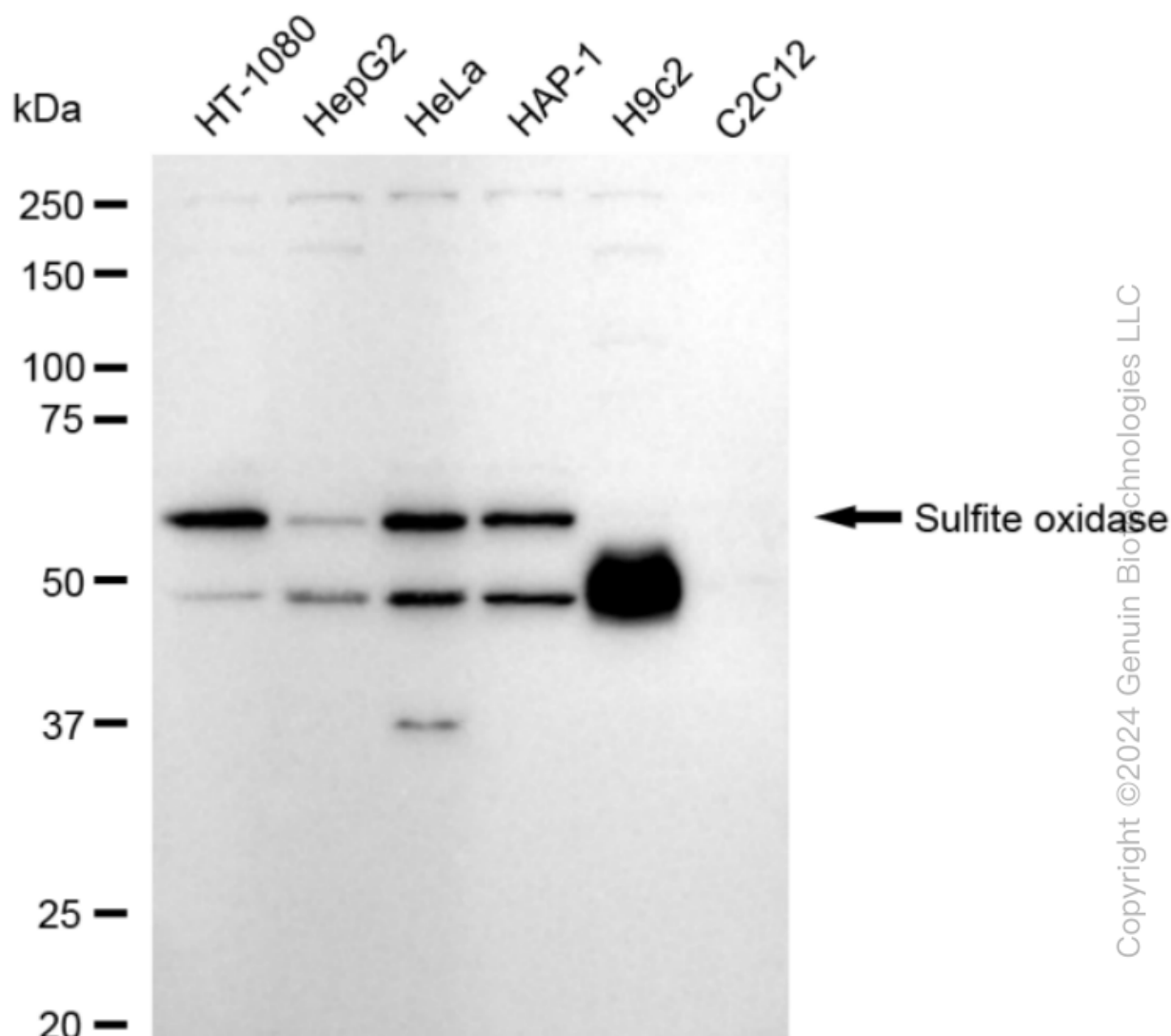
SALES@GENUINBIOTECH.COM
FAX: +1-540-855-7041

WWW.GENUINBIOTECH.COM

KD-Validated Anti-Sulfite Oxidase Recombinant Rabbit Monoclonal Antibody

PAGE 3

Immunocytochemical staining of HT-1080 cells with anti-sulfite oxidase antibody (Cat#62620, 1:1,000). Nuclei were stained blue with DAPI; Sulfite oxidase was stained magenta with Alexa Fluor® 647. Images were taken using Leica stellaris 5. Protein abundance based on laser Intensity and smart gain: Medium. Scale bar: 20 μ m.



Western blotting analysis using anti-Sulfite oxidase antibody (Cat#62620). Total cell lysates (30 μ g) from various cell lines were loaded and separated by SDS-PAGE. The blot was incubated with anti-Sulfite oxidase antibody (Cat#62620, 1:5,000) and HRP-conjugated goat anti-rabbit secondary antibody (Cat#201, 1:20,000) respectively. Image was developed using FeQ™ ECL Substrate Kit (Cat#226).

SUPPORT

SUPPORT@GENUINBIOTECH.COM
TEL: +1-540-855-7041

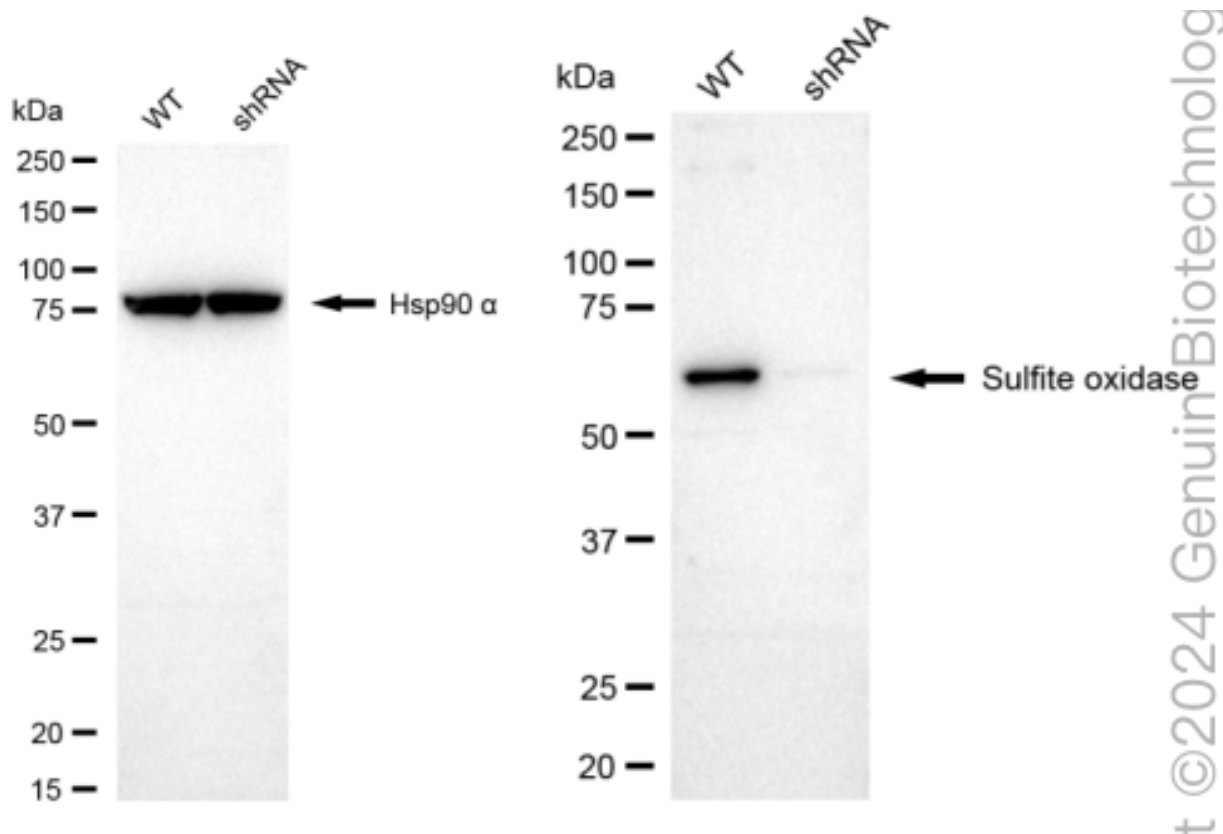
ORDERS

SALES@GENUINBIOTECH.COM
FAX: +1-540-855-7041

WWW.GENUINBIOTECH.COM

KD-Validated Anti-Sulfite Oxidase Recombinant Rabbit Monoclonal Antibody

PAGE 4



Western blotting analysis using anti-Sulfite oxidase antibody (Cat#62620). Sulfite oxidase expression in wild type (WT) and Sulfite oxidase shRNA knockdown (KD) HT-1080 cells with 20 µg of total cell lysates. Hsp90 α serves as a loading control. The blot was incubated with anti-Sulfite oxidase antibody (Cat#62620, 1:5,000) and HRP-conjugated goat anti-rabbit secondary antibody (Cat#201, 1:20,000) respectively. Image was developed using NaQ™ ECL Substrate Kit (Cat#716).

SUPPORT

SUPPORT@GENUINBIOTECH.COM
TEL: +1-540-855-7041

ORDERS

SALES@GENUINBIOTECH.COM
FAX: +1-540-855-7041

WWW.GENUINBIOTECH.COM