

# KD-Validated Anti-Ubiquitin Specific Peptidase 39 Recombinant Rabbit Monoclonal Antibody



**Catalog #: 62621**

## Aliases

USP39; Ubiquitin Specific Peptidase 39; SNRNP65; CGI-21; SAD1; Small Nuclear Ribonucleoprotein 65kDa (U4/U6.U5); U4/U6.U5 Tri-SnRNP-Associated 65 KDa Protein; Ubiquitin Carboxyl-Terminal Hydrolase 39; Ubiquitin Specific Protease 39; SAD1 Homolog; SnRNP Assembly Defective 1 Homolog (S. Cerevisiae); Inactive Ubiquitin-Specific Peptidase 39; U4/U6.U5 Tri-SnRNP-Associated Protein; SnRNP Assembly Defective 1 Homolog; EC 3.4.19.12; HSPC332; 65K

## Background

Gene Name: USP39

NCBI Gene Entry: [10713](#)

UniProt Entry: [Q53GS9](#)

## Application Information

Molecular Weight: Predicted, 65 kDa, observed, 65 kDa

Clonality: Rabbit monoclonal antibody

Clone ID: 24GB1810

Species Reactivity: Human, mouse, rat

Applications Tested: Western blotting (WB), flow cytometry (FCM), immunocytochemistry (IC)

## Immunogen

A synthesized peptide derived from human USP39

## Isotype

Rabbit IgG

## Storage Buffer

Supplied in PBS (pH 7.4) containing 50% glycerol, and 0.02% sodium azide.

## Storage

Store at -20 °C for one year.

## Recommended Dilutions

Western Blotting (WB): 1:1,000-1:5,000

Flow Cytometry (FCM): 1:2,000

Immunocytochemistry (IC): 1:100-1:1,000

---

### SUPPORT

SUPPORT@GENUINBIOTECH.COM  
TEL: +1-540-855-7041

### ORDERS

SALES@GENUINBIOTECH.COM  
FAX: +1-540-855-7041

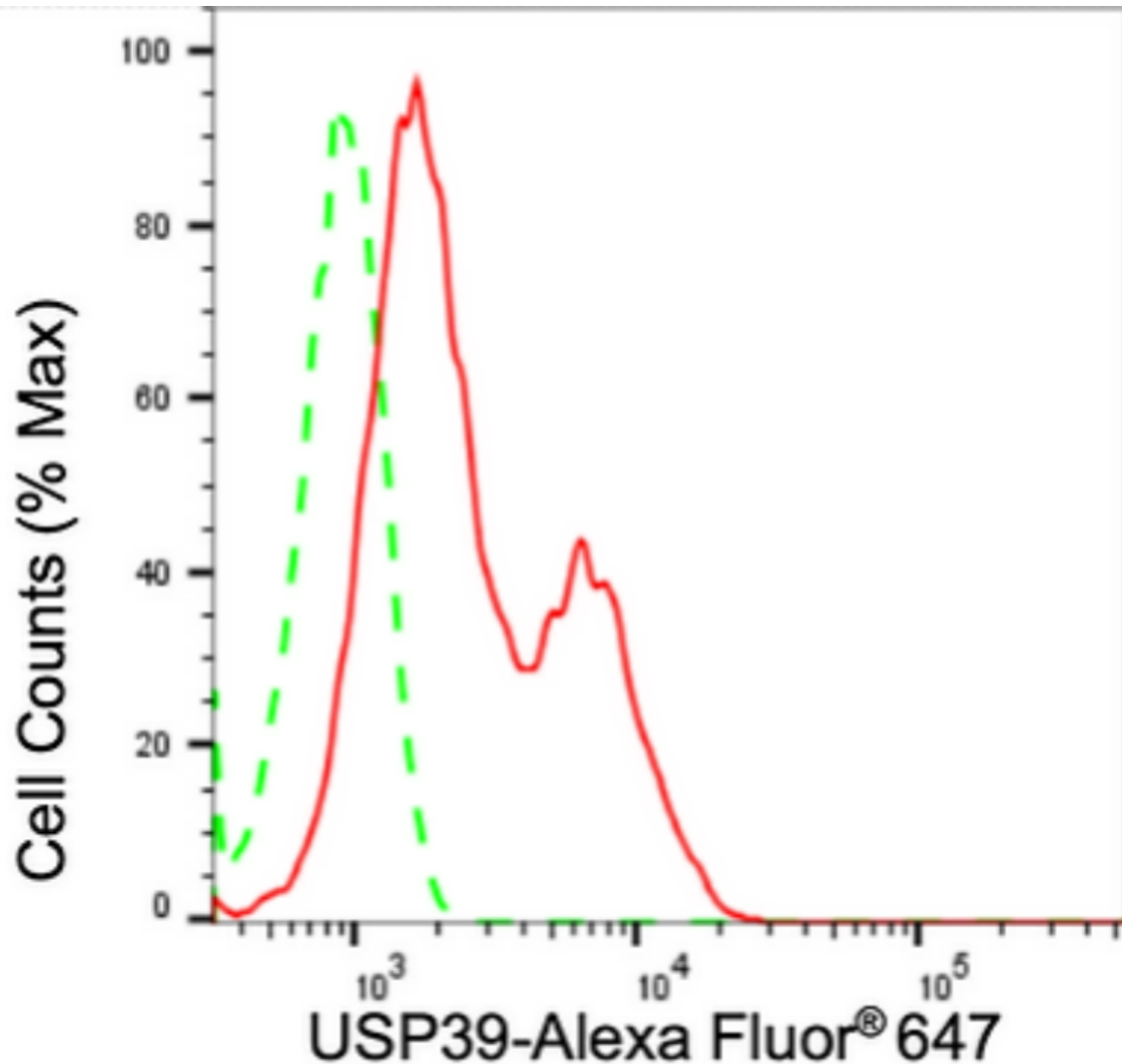
[WWW.GENUINBIOTECH.COM](http://WWW.GENUINBIOTECH.COM)

# KD-Validated Anti-Ubiquitin Specific Peptidase 39 Recombinant Rabbit Monoclonal Antibody

PAGE 2

**Note:** This product is for research use only.

## Validation Data



Copyright ©2024 Genuin Biotechnologies LLC

Flow cytometric analysis of USP39 expression in HepG2 cells using anti-USP39 antibody (Cat#62621, 1:2,000). Green, isotype control; red, USP39.

### SUPPORT

SUPPORT@GENUINBIOTECH.COM  
TEL: +1-540-855-7041

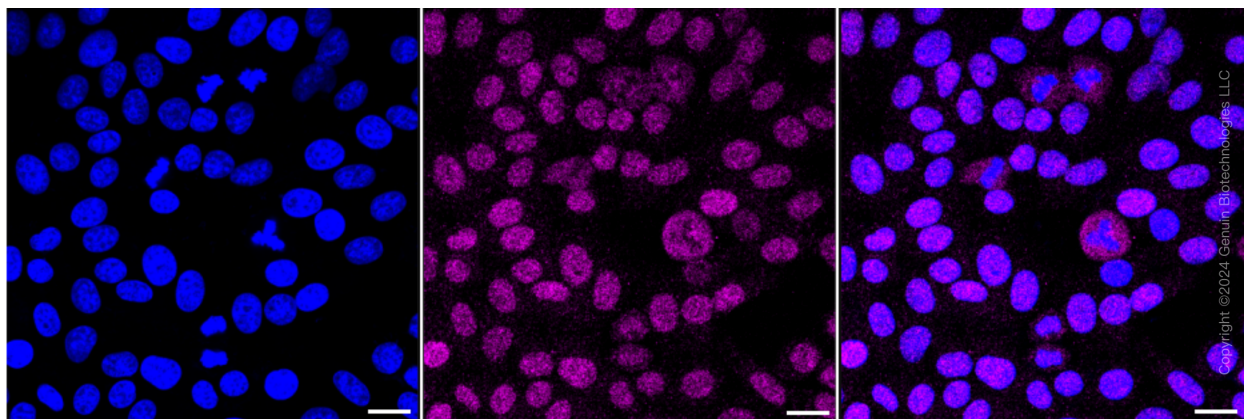
### ORDERS

SALES@GENUINBIOTECH.COM  
FAX: +1-540-855-7041

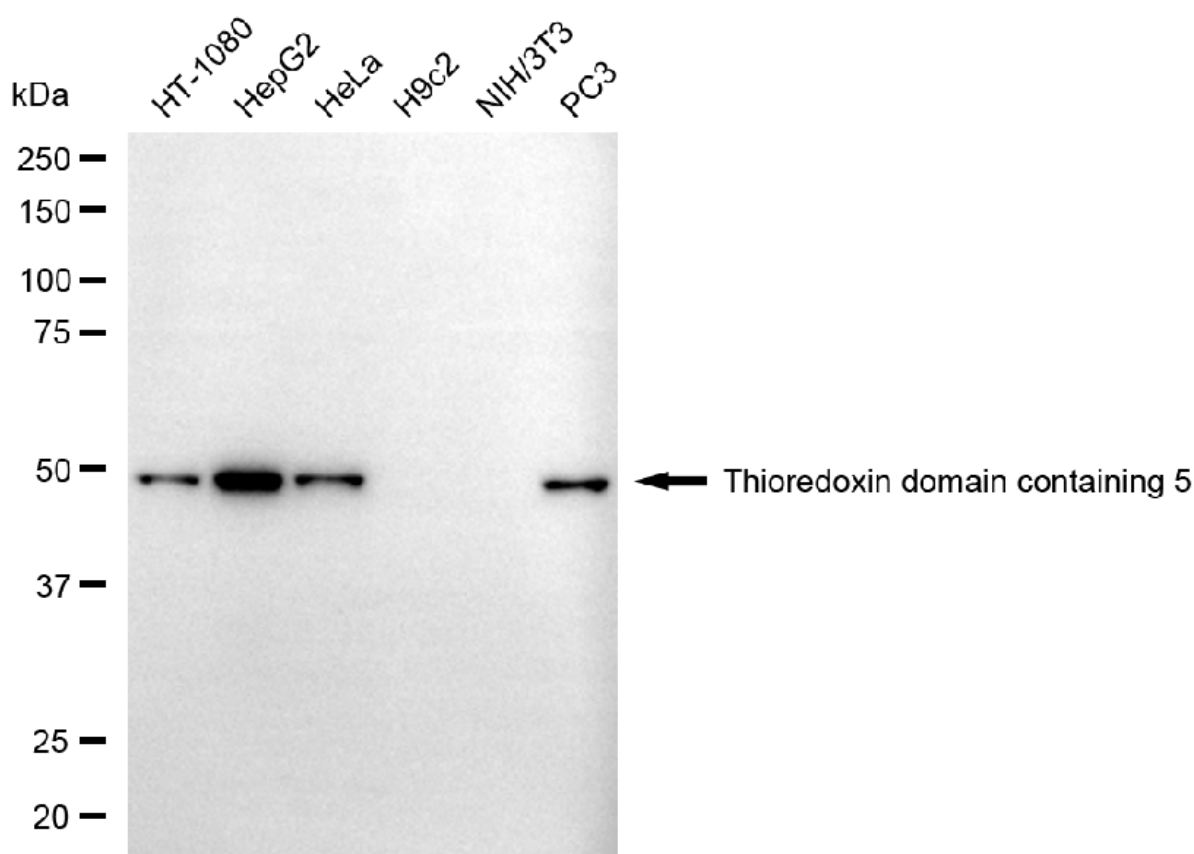
[WWW.GENUINBIOTECH.COM](http://WWW.GENUINBIOTECH.COM)

## KD-Validated Anti-Ubiquitin Specific Peptidase 39 Recombinant Rabbit Monoclonal Antibody

PAGE 3



Immunocytochemical staining of HepG2 cells with anti-USP39 antibody (Cat#62621, 1:1,000). Nuclei were stained blue with DAPI; USP39 was stained magenta with Alexa Fluor® 647. Images were taken using Leica stellaris 5. Protein abundance based on laser Intensity and smart gain: Medium. Scale bar: 20 µm.



Western blotting analysis using anti-USP39 antibody (Cat#62621). Total cell lysates (30 µg) from various cell lines were loaded and separated by SDS-PAGE. The blot was incubated with anti-USP39 antibody (Cat#62621, 1:5,000) and HRP-conjugated goat anti-rabbit secondary antibody (Cat#201, 1:20,000) respectively. Image was developed using FeQ™ ECL Substrate Kit (Cat#226).

### SUPPORT

SUPPORT@GENUINBIOTECH.COM  
TEL: +1-540-855-7041

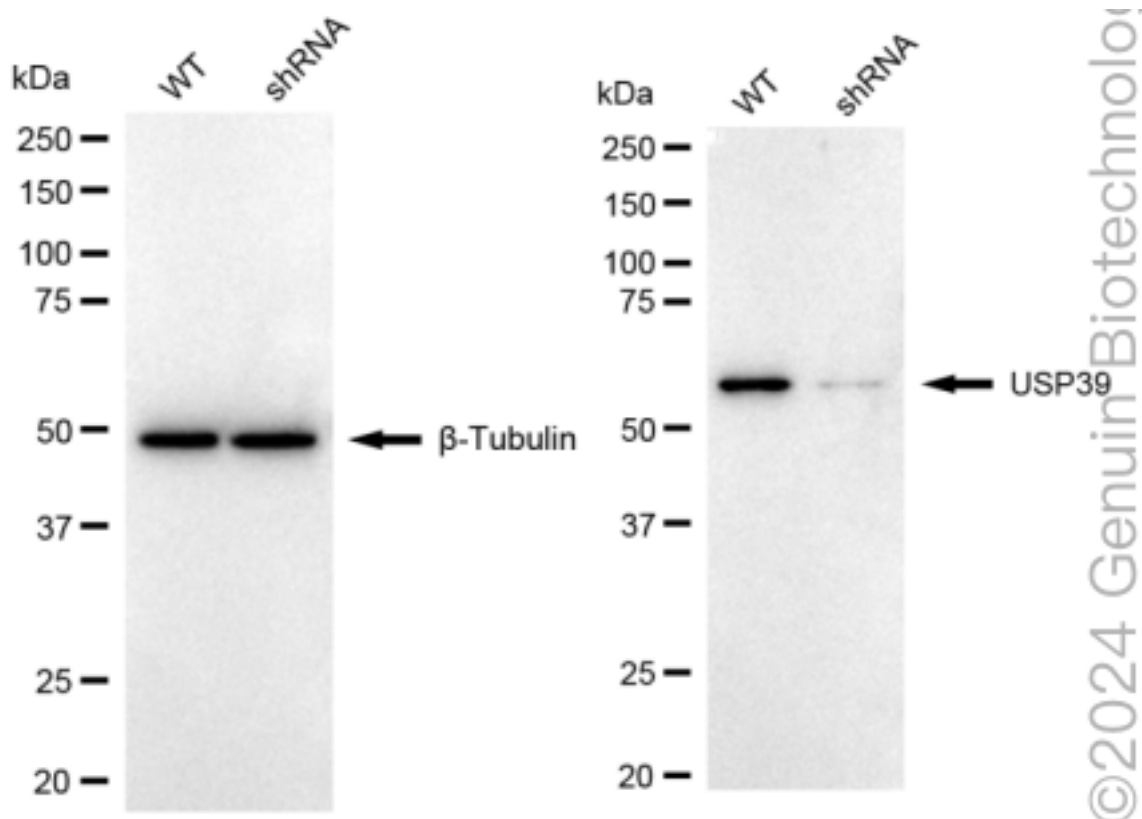
### ORDERS

SALES@GENUINBIOTECH.COM  
FAX: +1-540-855-7041

WWW.GENUINBIOTECH.COM

## KD-Validated Anti-Ubiquitin Specific Peptidase 39 Recombinant Rabbit Monoclonal Antibody

PAGE 4



Western blotting analysis using anti-USP39 antibody (Cat#62621). USP39 expression in wild type (WT) and USP39 shRNA knockdown (KD) HeLa cells with 20  $\mu$ g of total cell lysates.  $\beta$ -Tubulin serves as a loading control. The blot was incubated with anti-USP39 antibody (Cat#62621, 1:5,000) and HRP-conjugated goat anti-rabbit secondary antibody (Cat#201, 1:20,000) respectively. Image was developed using NaQ™ ECL Substrate Kit (Cat#716).

### SUPPORT

SUPPORT@GENUINBIOTECH.COM  
TEL: +1-540-855-7041

### ORDERS

SALES@GENUINBIOTECH.COM  
FAX: +1-540-855-7041

WWW.GENUINBIOTECH.COM