

# KD-Validated Anti-TAF15 Recombinant Rabbit Monoclonal Antibody



**Catalog #: 62622**

## Aliases

TAF15; TATA-Box Binding Protein Associated Factor 15; RBP56; TAF2N; Npl3; TATA Box Binding Protein (TBP)-Associated Factor, RNA Polymerase II, N, 68kD (RNA-Binding Protein 56); TAF15 RNA Polymerase II, TATA Box Binding Protein (TBP)-Associated Factor, 68kDa; TATA-Binding Protein-Associated Factor 2N; HTAFII68; TAFII68; TATA Box-Binding Protein-Associated Factor 2N (RNA-Binding Protein 56); 68 KDa TATA-Binding Protein-Associated Factor; TBP-Associated Factor 15; RNA-Binding Protein 56; RBP56/CSMF Fusion; TAF(II)68

## Background

Gene Name: TAF15

NCBI Gene Entry: [8148](#)

UniProt Entry: [Q92804](#)

## Application Information

Molecular Weight: Predicted, 62 kDa, observed, 62 kDa

Clonality: Rabbit monoclonal antibody

Clone ID: 24GB1830

Species Reactivity: Human, mouse, rat

Applications Tested: Western blotting (WB), flow cytometry (FCM), immunocytochemistry (IC)

## Immunogen

A synthesized peptide derived from human TAF15

## Isotype

Rabbit IgG

## Storage Buffer

Supplied in PBS (pH 7.4) containing 50% glycerol, and 0.02% sodium azide.

## Storage

Store at -20 °C for one year.

## Recommended Dilutions

Western Blotting (WB): 1:1,000-1:5,000

Flow Cytometry (FCM): 1:2,000

Immunocytochemistry (IC): 1:100-1:1,000

---

### SUPPORT

SUPPORT@GENUINBIOTECH.COM  
TEL: +1-540-855-7041

### ORDERS

SALES@GENUINBIOTECH.COM  
FAX: +1-540-855-7041

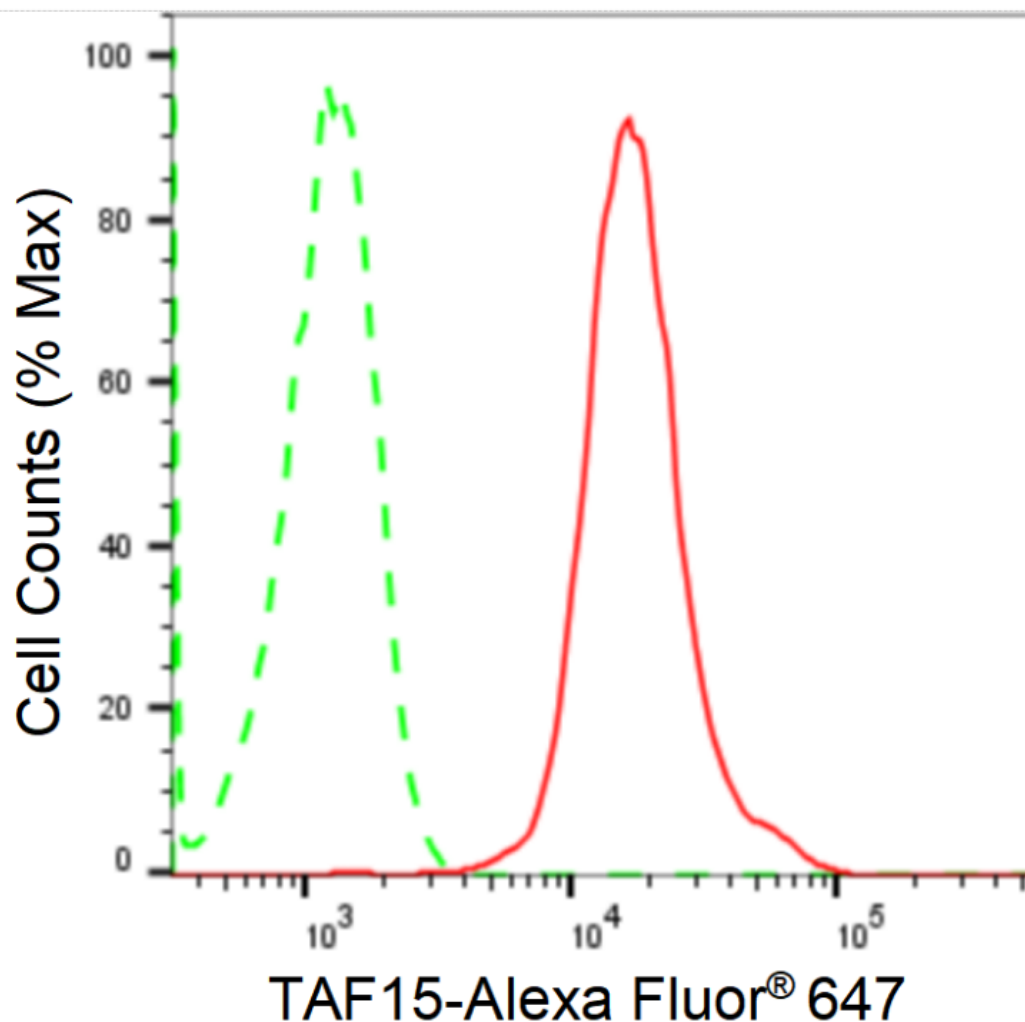
[WWW.GENUINBIOTECH.COM](http://WWW.GENUINBIOTECH.COM)

# KD-Validated Anti-TAF15 Recombinant Rabbit Monoclonal Antibody

PAGE 2

**Note:** This product is for research use only.

## Validation Data



Copyright ©2024 Genuin Biotechnologies LLC

Flow cytometric analysis of TAF15 expression in HepG2 cells using anti-TAF15 antibody (Cat#62622, 1:2,000). Green, isotype control; red, TAF15.

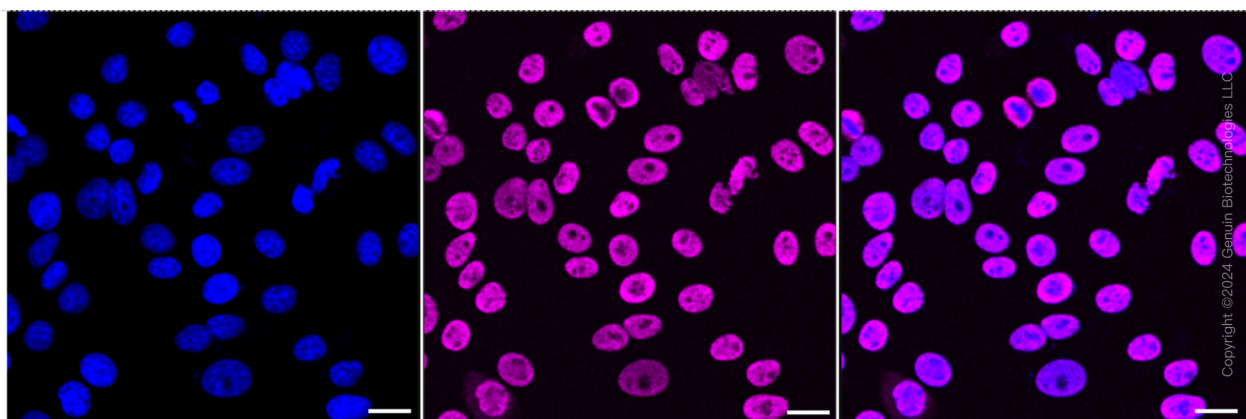
### SUPPORT

SUPPORT@GENUINBIOTECH.COM  
TEL: +1-540-855-7041

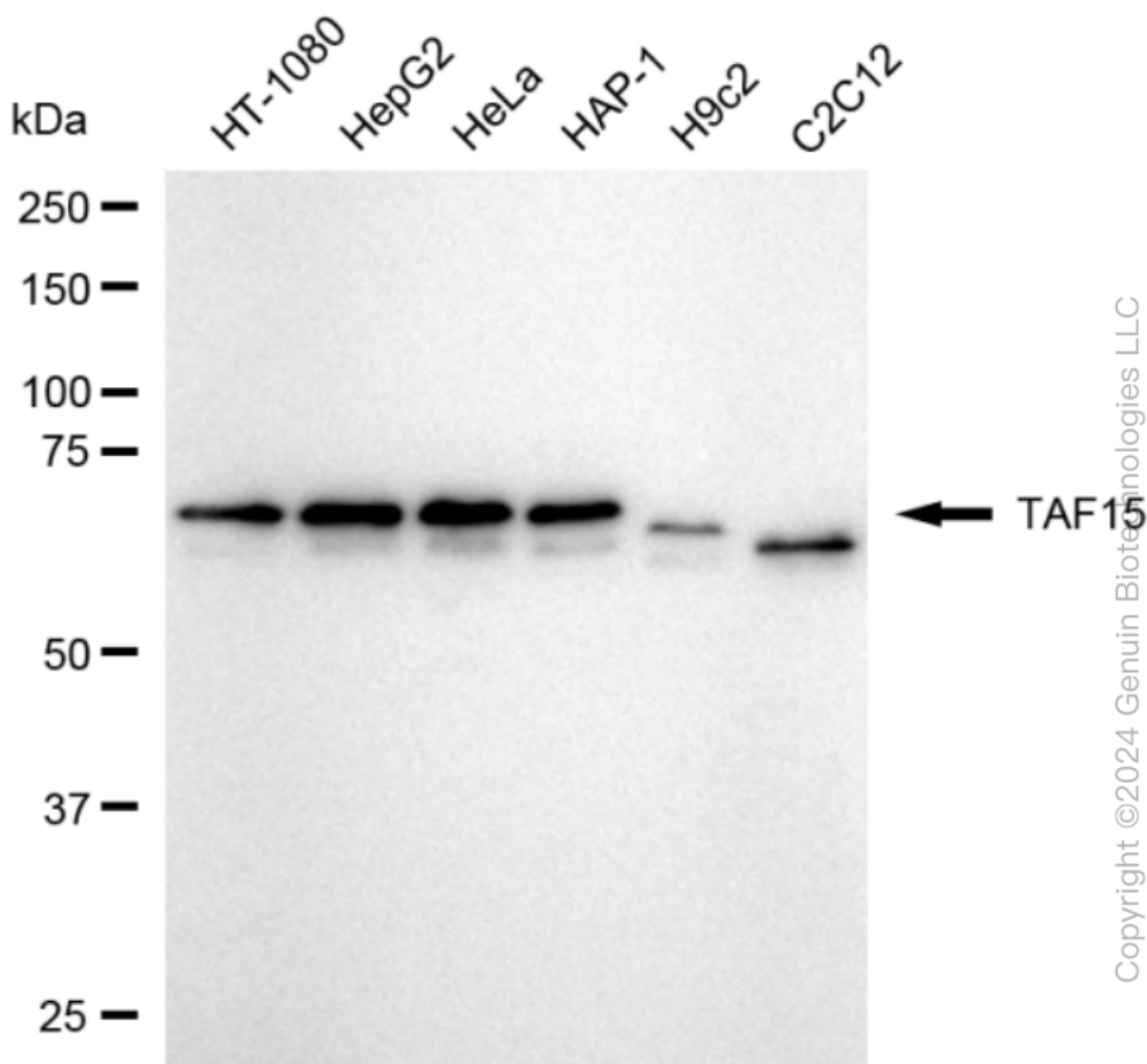
### ORDERS

SALES@GENUINBIOTECH.COM  
FAX: +1-540-855-7041

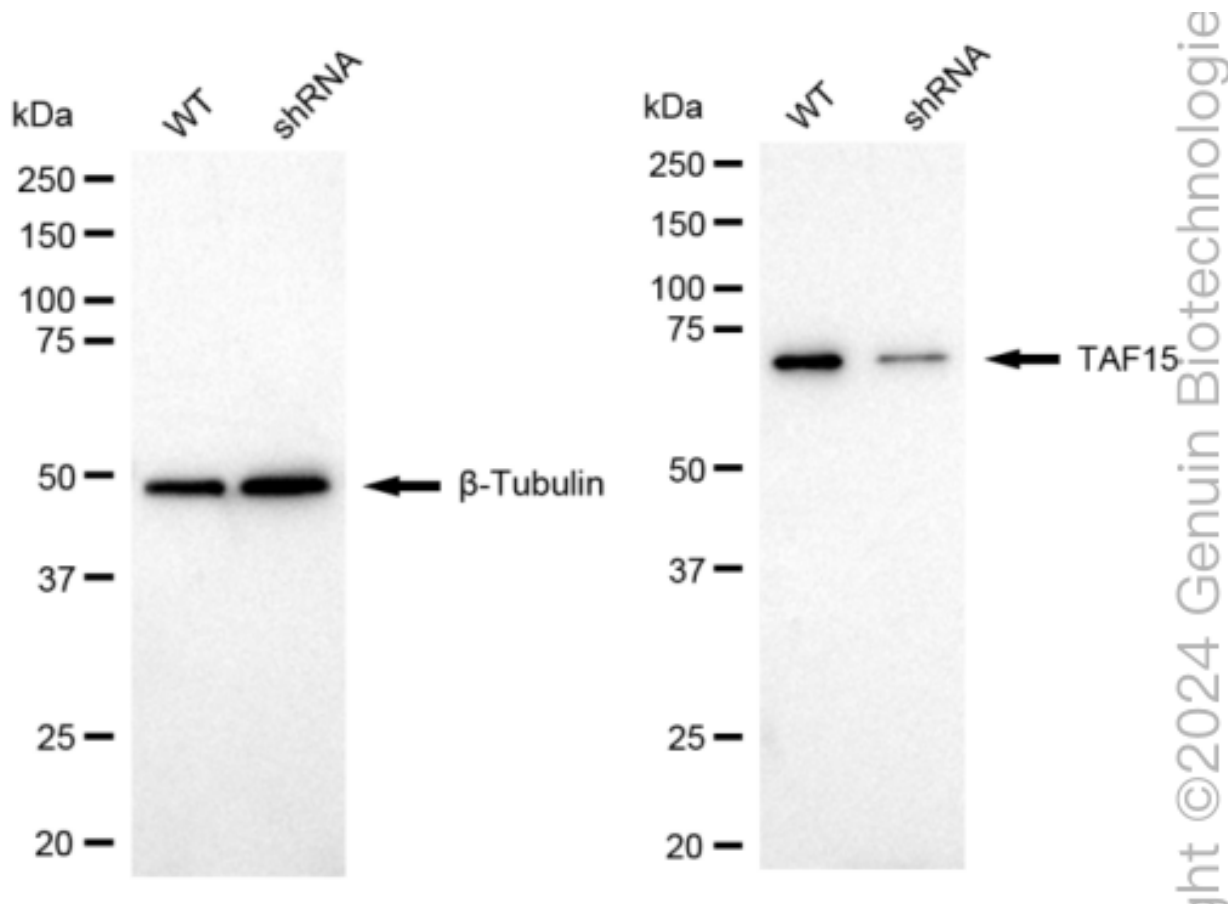
[WWW.GENUINBIOTECH.COM](http://WWW.GENUINBIOTECH.COM)



Immunocytochemical staining of HepG2 cells with anti-TAF15 antibody (Cat#62622, 1:1,000). Nuclei were stained blue with DAPI; TAF15 was stained magenta with Alexa Fluor® 647. Images were taken using Leica stellaris 5. Protein abundance based on laser Intensity and smart gain: High. Scale bar: 20  $\mu$ m.



Western blotting analysis using anti-TAF15 antibody (Cat#62622). Total cell lysates (30  $\mu$ g) from various cell lines were loaded and separated by SDS-PAGE. The blot was incubated with anti-TAF15 antibody (Cat#62622, 1:5,000) and HRP-conjugated goat anti-rabbit secondary antibody (Cat#201, 1:20,000) respectively. Image was developed using FeQ™ ECL Substrate Kit (Cat#226).



Western blotting analysis using anti-TAF15 antibody (Cat#62622). TAF15 expression in wild type (WT) and TAF15 shRNA knockdown (KD) HeLa cells with 20 µg of total cell lysates. β-Tubulin serves as a loading control. The blot was incubated with anti-TAF15 antibody (Cat#62622, 1:5,000) and HRP-conjugated goat anti-rabbit secondary antibody (Cat#201, 1:20,000) respectively. Image was developed using NaQ™ ECL Substrate Kit (Cat#716).