

KD-Validated Anti-Ubiquitin Specific Peptidase 39 Recombinant Rabbit Monoclonal Antibody



Catalog #: 62626

Aliases

USP39; Ubiquitin Specific Peptidase 39; SNRNP65; CGI-21; SAD1; Small Nuclear Ribonucleoprotein 65kDa (U4/U6.U5); U4/U6.U5 Tri-SnRNP-Associated 65 KDa Protein; Ubiquitin Carboxyl-Terminal Hydrolase 39; Ubiquitin Specific Protease 39; SAD1 Homolog; SnRNP Assembly Defective 1 Homolog (S. Cerevisiae); Inactive Ubiquitin-Specific Peptidase 39; U4/U6.U5 Tri-SnRNP-Associated Protein; SnRNP Assembly Defective 1 Homolog; EC 3.4.19.12 ;HSPC332; 65K

Background

Gene Name: USP39

NCBI Gene Entry: [10713](#)

UniProt Entry: [Q53GS9](#)

Application Information

Molecular Weight: Predicted, 65 kDa, observed, 65 kDa

Clonality: Rabbit monoclonal antibody

Clone ID: 24GB1930

Species Reactivity: Human, mouse, rat

Applications Tested: Western blotting (WB), flow cytometry (FCM), immunocytochemistry (IC)

Immunogen

A synthesized peptide derived from human USP39

Isotype

Rabbit IgG

Storage Buffer

Supplied in PBS (pH 7.4) containing 50% glycerol, and 0.02% sodium azide.

Storage

Store at -20 °C for one year.

Recommended Dilutions

Western Blotting (WB): 1:1,000-1:5,000

Flow Cytometry (FCM): 1:2,000

Immunocytochemistry (IC): 1:100-1:1,000

SUPPORT

SUPPORT@GENUINBIOTECH.COM
TEL: +1-540-855-7041

ORDERS

SALES@GENUINBIOTECH.COM
FAX: +1-540-855-7041

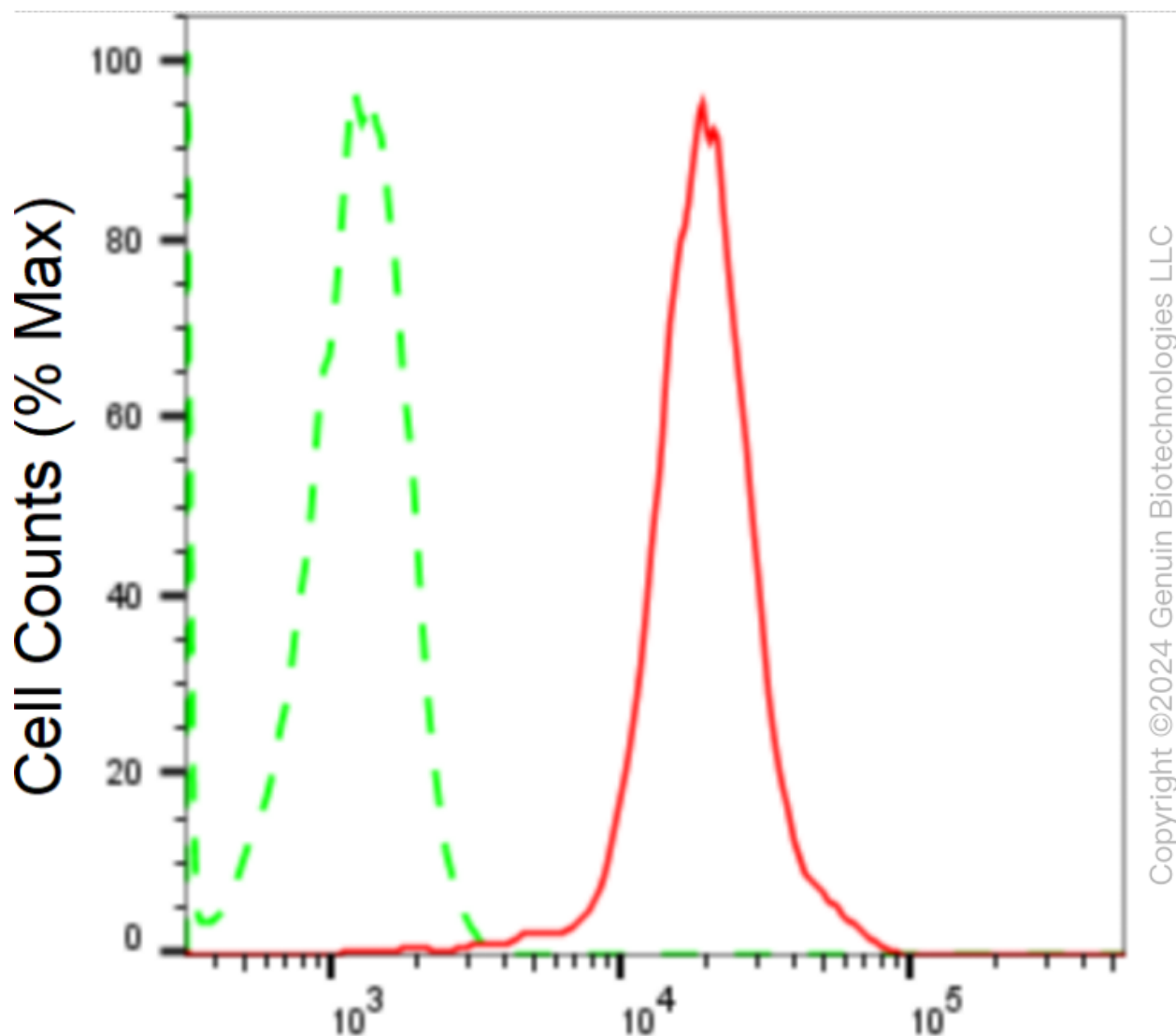
WWW.GENUINBIOTECH.COM

KD-Validated Anti-Ubiquitin Specific Peptidase 39 Recombinant Rabbit Monoclonal Antibody

PAGE 2

Note: This product is for research use only.

Validation Data



Copyright ©2024 Genuin Biotechnologies LLC

USP39-Alexa Fluor® 647

Flow cytometric analysis of USP39 expression in HepG2 cells using anti-USP39 antibody (Cat#62626, 1:2,000). Green, isotype control; red, USP39.

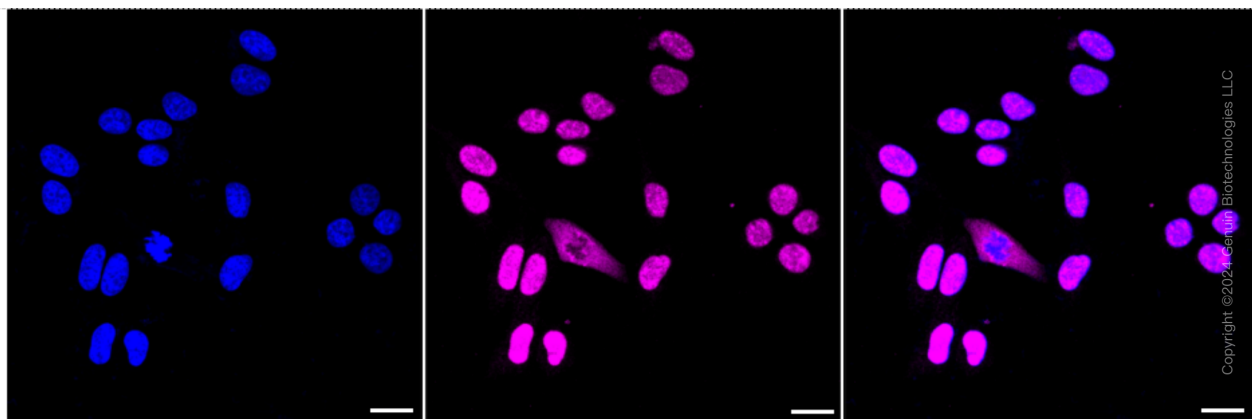
SUPPORT

SUPPORT@GENUINBIOTECH.COM
TEL: +1-540-855-7041

ORDERS

SALES@GENUINBIOTECH.COM
FAX: +1-540-855-7041

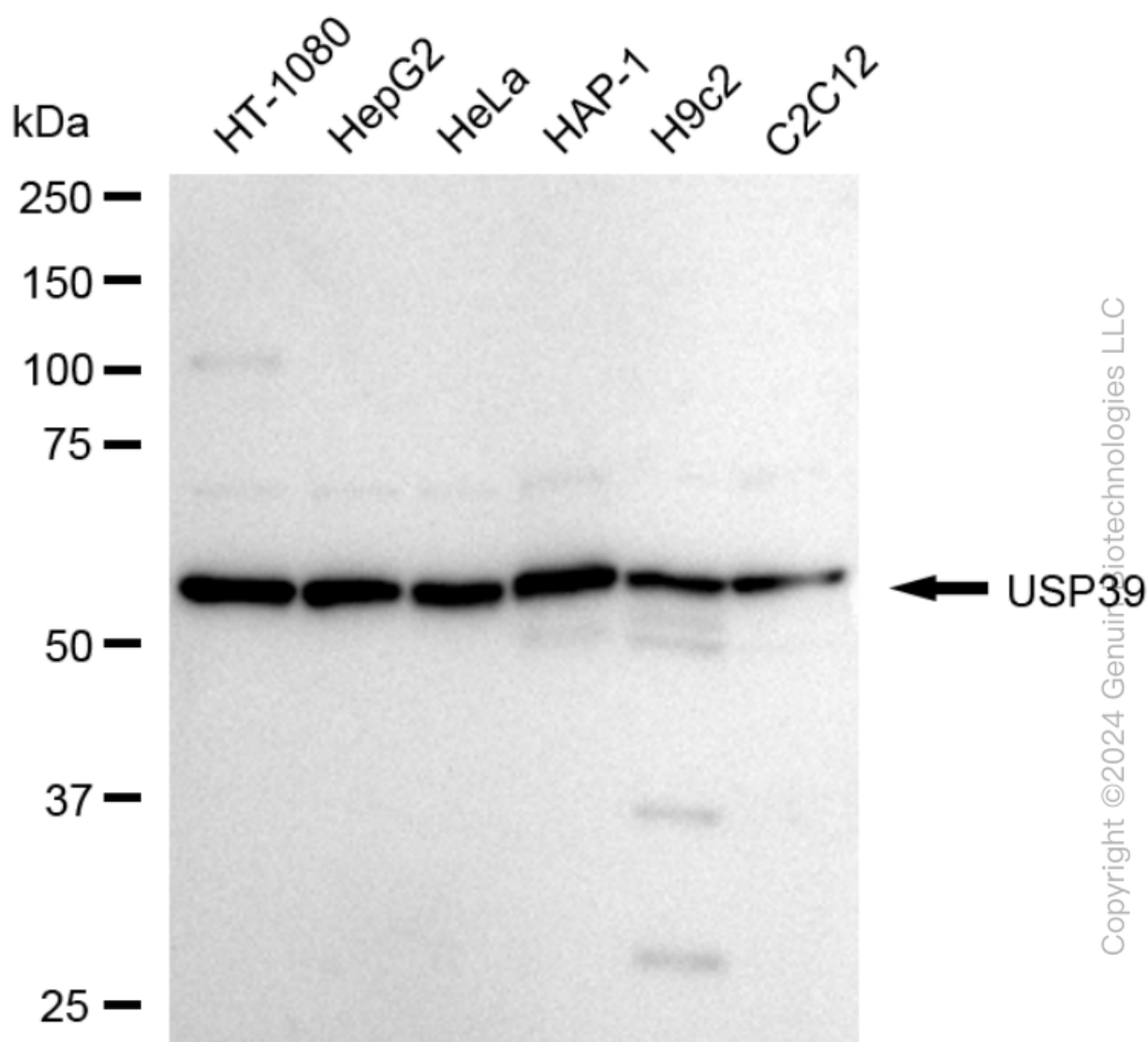
WWW.GENUINBIOTECH.COM



Immunocytochemical staining of HepG2 cells with anti-USP39 antibody (Cat#62626, 1:1,000). Nuclei were stained blue with DAPI; USP39 was stained magenta with Alexa Fluor® 647. Images were taken using Leica stellaris 5. Protein abundance based on laser Intensity and smart gain: Medium. Scale bar: 20 μ m.

KD-Validated Anti-Ubiquitin Specific Peptidase 39 Recombinant Rabbit Monoclonal Antibody

PAGE 4



Western blotting analysis using anti-USP39 antibody (Cat#62626). Total cell lysates (30 µg) from various cell lines were loaded and separated by SDS-PAGE. The blot was incubated with anti-USP39 antibody (Cat#62626, 1:5,000) and HRP-conjugated goat anti-rabbit secondary antibody (Cat#201, 1:20,000) respectively. Image was developed using FeQ™ ECL Substrate Kit (Cat#226).

SUPPORT

SUPPORT@GENUINBIOTECH.COM
TEL: +1-540-855-7041

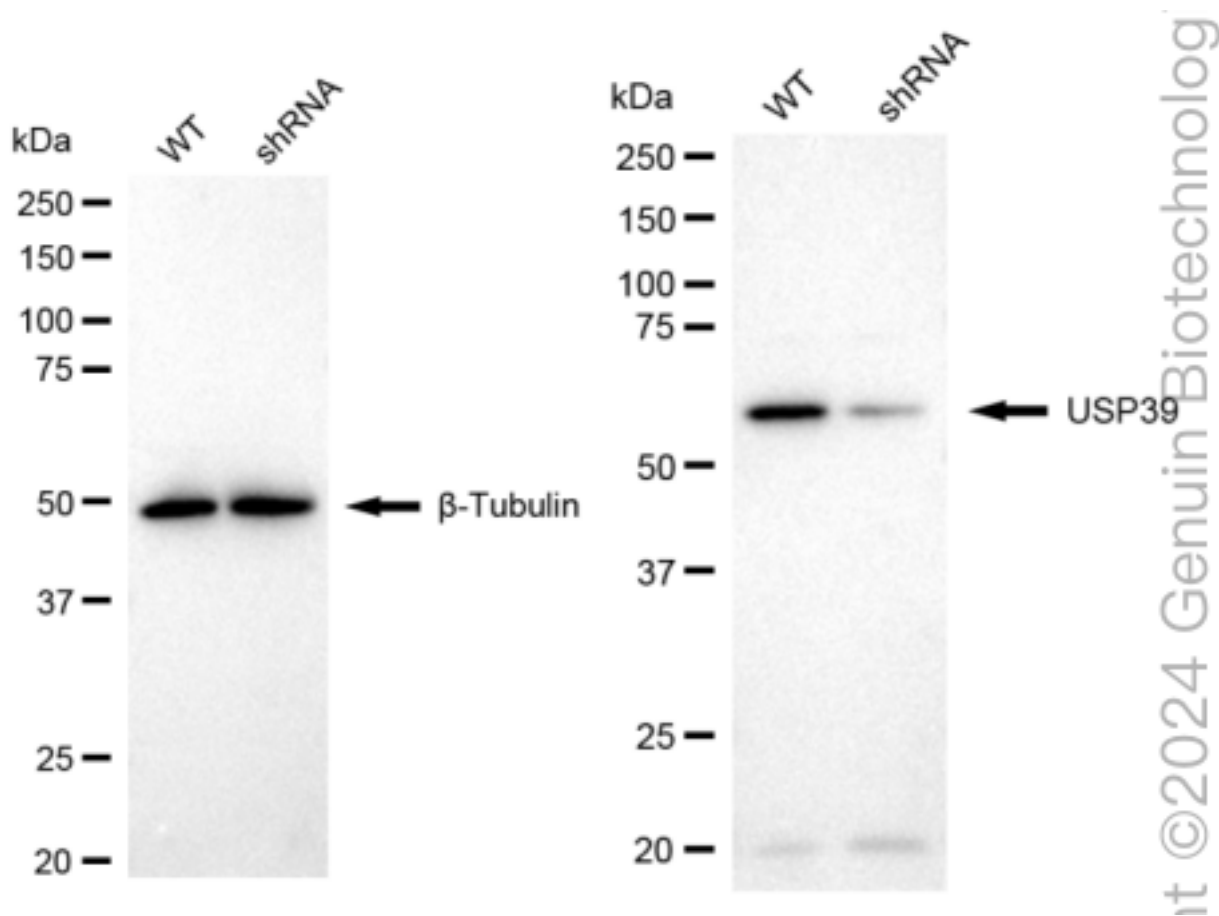
ORDERS

SALES@GENUINBIOTECH.COM
FAX: +1-540-855-7041

WWW.GENUINBIOTECH.COM

KD-Validated Anti-Ubiquitin Specific Peptidase 39 Recombinant Rabbit Monoclonal Antibody

PAGE 5



Western blotting analysis using anti-USP39 antibody (Cat#62626). USP39 expression in wild type (WT) and USP39 shRNA knockdown (KD) HeLa cells with 20 μ g of total cell lysates. β -Tubulin serves as a loading control. The blot was incubated with anti-USP39 antibody (Cat#62626, 1:5,000) and HRP-conjugated goat anti-rabbit secondary antibody (Cat#201, 1:20,000) respectively. Image was developed using NaQTM ECL Substrate Kit (Cat#716).

SUPPORT

SUPPORT@GENUINBIOTECH.COM
TEL: +1-540-855-7041

ORDERS

SALES@GENUINBIOTECH.COM
FAX: +1-540-855-7041

WWW.GENUINBIOTECH.COM