

KD-Validated Anti-Transcription Factor 7 Like 1 Recombinant Rabbit Monoclonal Antibody



Catalog #: 62627

Aliases

TCF7L1; Transcription Factor 7 Like 1; TCF3; Transcription Factor 7-Like 1 (T-Cell Specific, HMG-Box); HMG Box Transcription Factor 3; Transcription Factor 7-Like 1; TCF-3

Background

Gene Name: TCF7L1

NCBI Gene Entry: [83439](#)

UniProt Entry: [Q9HCS4](#)

Application Information

Molecular Weight: Predicted, 63 kDa, observed, 63 kDa

Clonality: Rabbit monoclonal antibody

Clone ID: 24GB1985

Species Reactivity: Human, mouse, rat

Applications Tested: Western blotting (WB), flow cytometry (FCM), immunocytochemistry (IC)

Immunogen

A synthesized peptide derived from human TCF3

Isotype

Rabbit IgG

Storage Buffer

Supplied in PBS (pH 7.4) containing 50% glycerol, and 0.02% sodium azide.

Storage

Store at -20 °C for one year.

Recommended Dilutions

Western Blotting (WB): 1:1,000-1:5,000

Flow Cytometry (FCM): 1:2,000

Immunocytochemistry (IC): 1:100-1:1,000

Note: This product is for research use only.

Validation Data

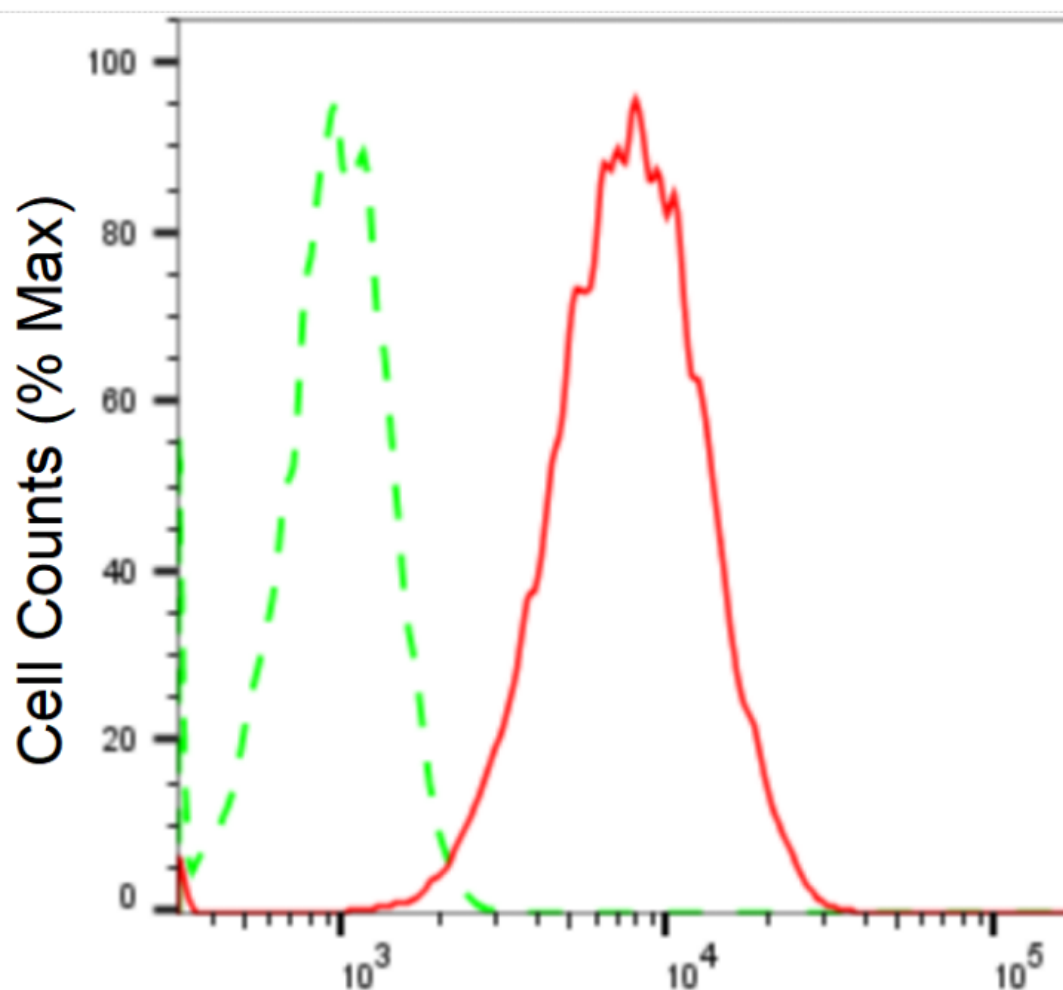
SUPPORT

SUPPORT@GENUINBIOTECH.COM
TEL: +1-540-855-7041

ORDERS

SALES@GENUINBIOTECH.COM
FAX: +1-540-855-7041

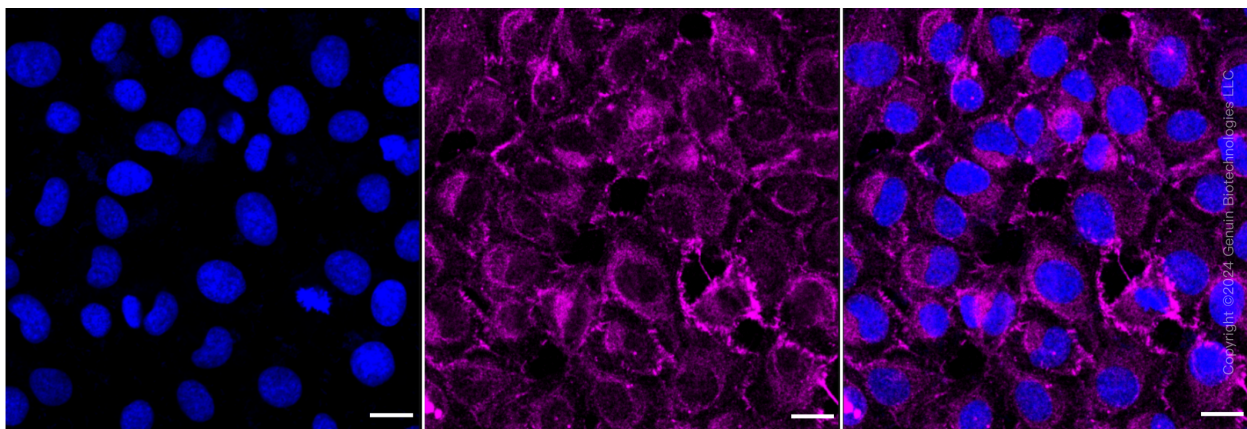
WWW.GENUINBIOTECH.COM



Copyright ©2024 Genuin Biotechnologies LLC

Transcription factor 7 like 1-Alexa Fluor® 647

Flow cytometric analysis of Transcription factor 7 like 1 expression in HT-1080 cells using anti-Transcription factor 7 like 1 antibody (Cat#62627, 1:2,000). Green, isotype control; red, Transcription factor 7 like 1.



Immunocytochemical staining of HT-1080 cells with anti-transcription factor 7 like 1 antibody

SUPPORT

SUPPORT@GENUINBIOTECH.COM
TEL: +1-540-855-7041

ORDERS

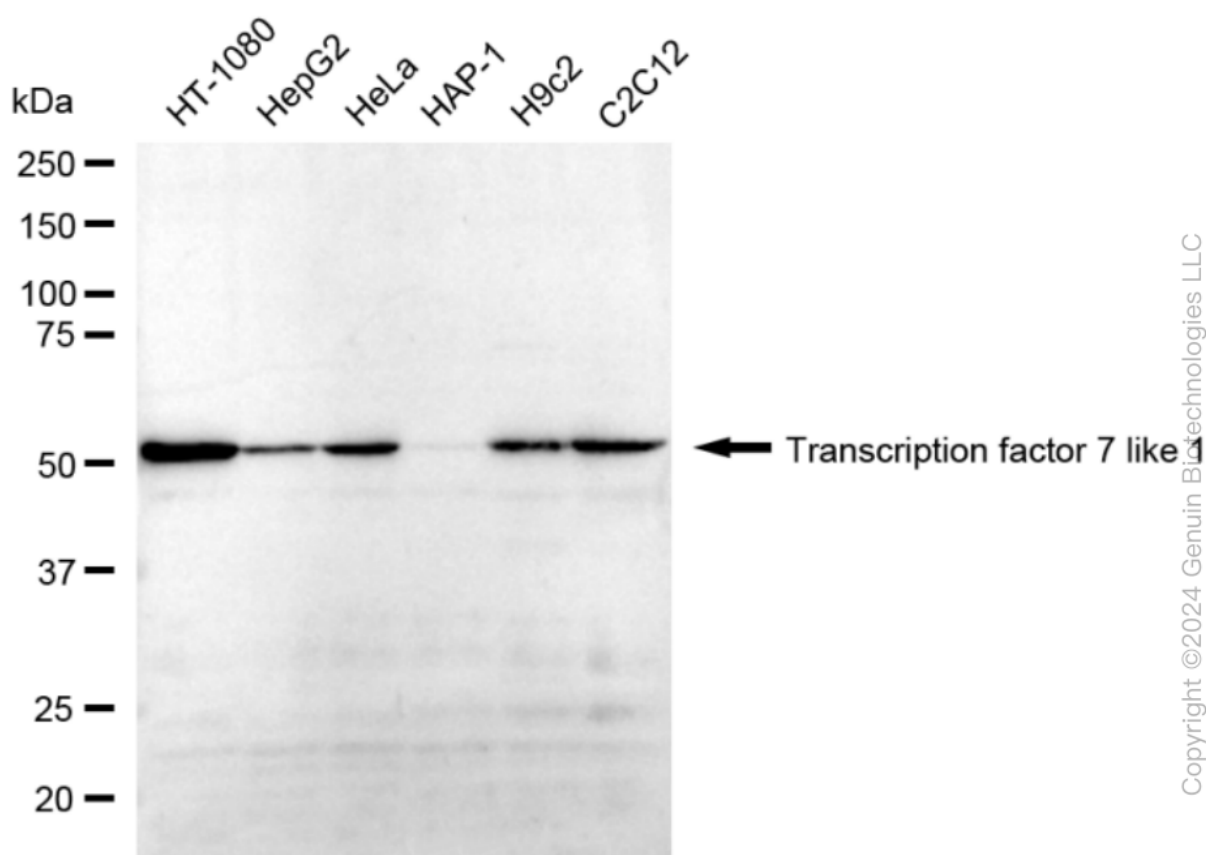
SALES@GENUINBIOTECH.COM
FAX: +1-540-855-7041

WWW.GENUINBIOTECH.COM

KD-Validated Anti-Transcription Factor 7 Like 1 Recombinant Rabbit Monoclonal Antibody

PAGE 3

(Cat#62627, 1:1,000). Nuclei were stained blue with DAPI; Transcription factor 7 like 1 was stained magenta with Alexa Fluor® 647. Images were taken using Leica stellaris 5. Protein abundance based on laser Intensity and smart gain: Medium. Scale bar: 20 μ m.



Western blotting analysis using anti-Transcription factor 7 like 1 antibody (Cat#62627). Total cell lysates (30 μ g) from various cell lines were loaded and separated by SDS-PAGE. The blot was incubated with anti-Transcription factor 7 like 1 antibody (Cat#62627, 1:5,000) and HRP-conjugated goat anti-rabbit secondary antibody (Cat#201, 1:20,000) respectively. Image was developed using FeQ™ ECL Substrate Kit (Cat#226).

SUPPORT

SUPPORT@GENUINBIOTECH.COM
TEL: +1-540-855-7041

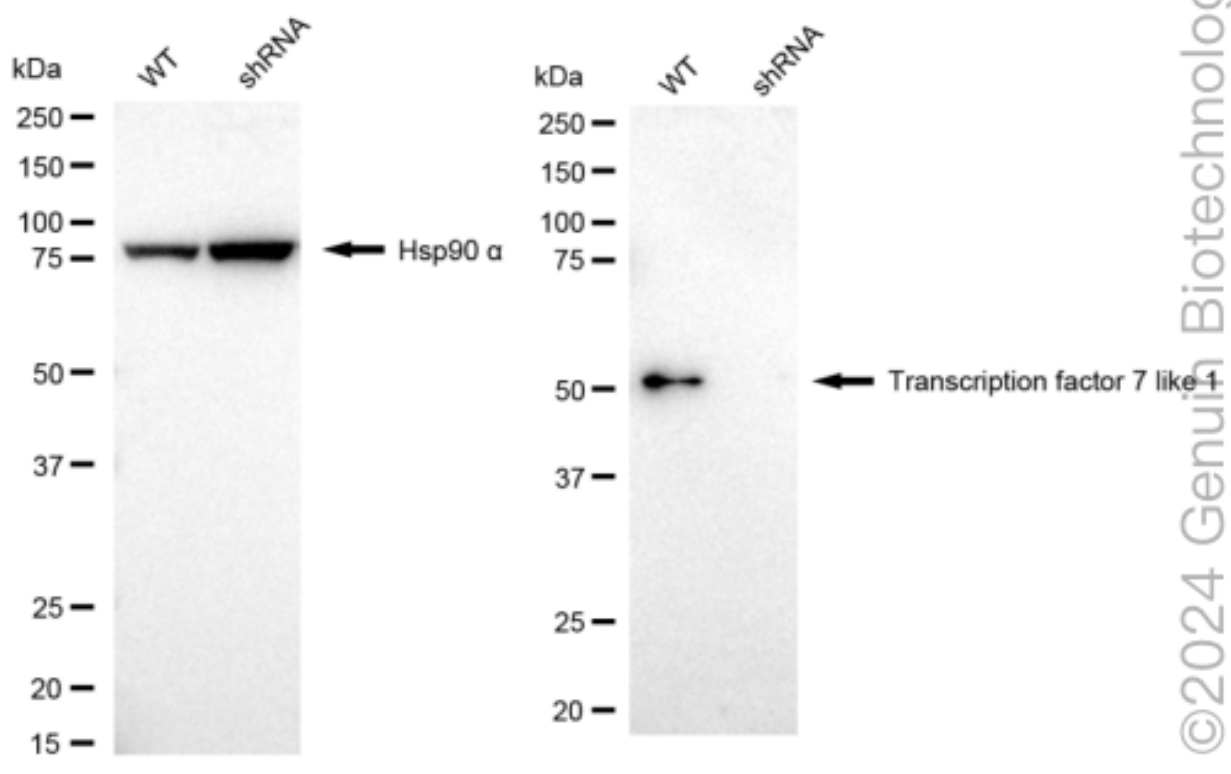
ORDERS

SALES@GENUINBIOTECH.COM
FAX: +1-540-855-7041

WWW.GENUINBIOTECH.COM

KD-Validated Anti-Transcription Factor 7 Like 1 Recombinant Rabbit Monoclonal Antibody

PAGE 4



Western blotting analysis using anti-Transcription factor 7 like 1 antibody (Cat#62627).

Transcription factor 7 like 1 expression in wild type (WT) and Transcription factor 7 like 1 shRNA knockdown (KD) HeLa cells with 20 µg of total cell lysates. Hsp90 α serves as a loading control. The blot was incubated with anti-Transcription factor 7 like 1 antibody (Cat#62627, 1:5,000) and HRP-conjugated goat anti-rabbit secondary antibody (Cat#201, 1:20,000) respectively. Image was developed using NaQ™ ECL Substrate Kit (Cat#716).

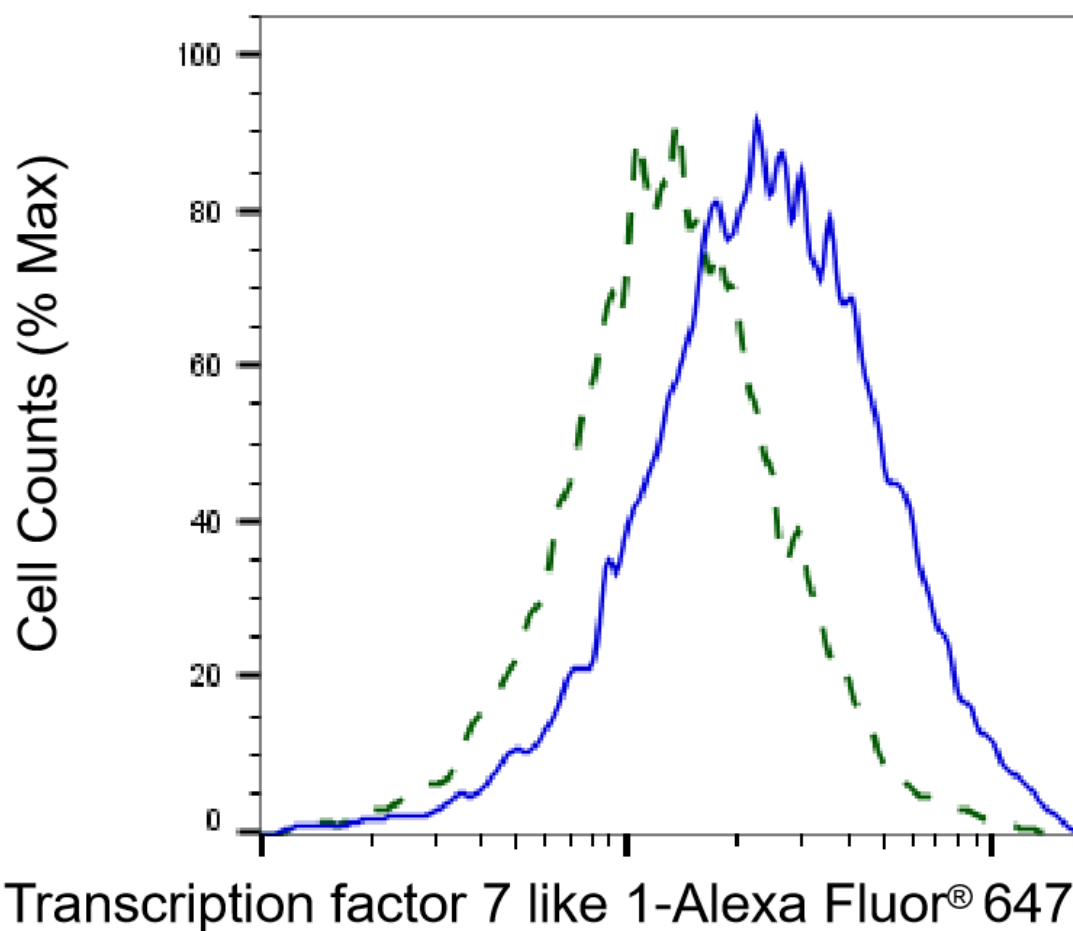
SUPPORT

SUPPORT@GENUINBIOTECH.COM
TEL: +1-540-855-7041

ORDERS

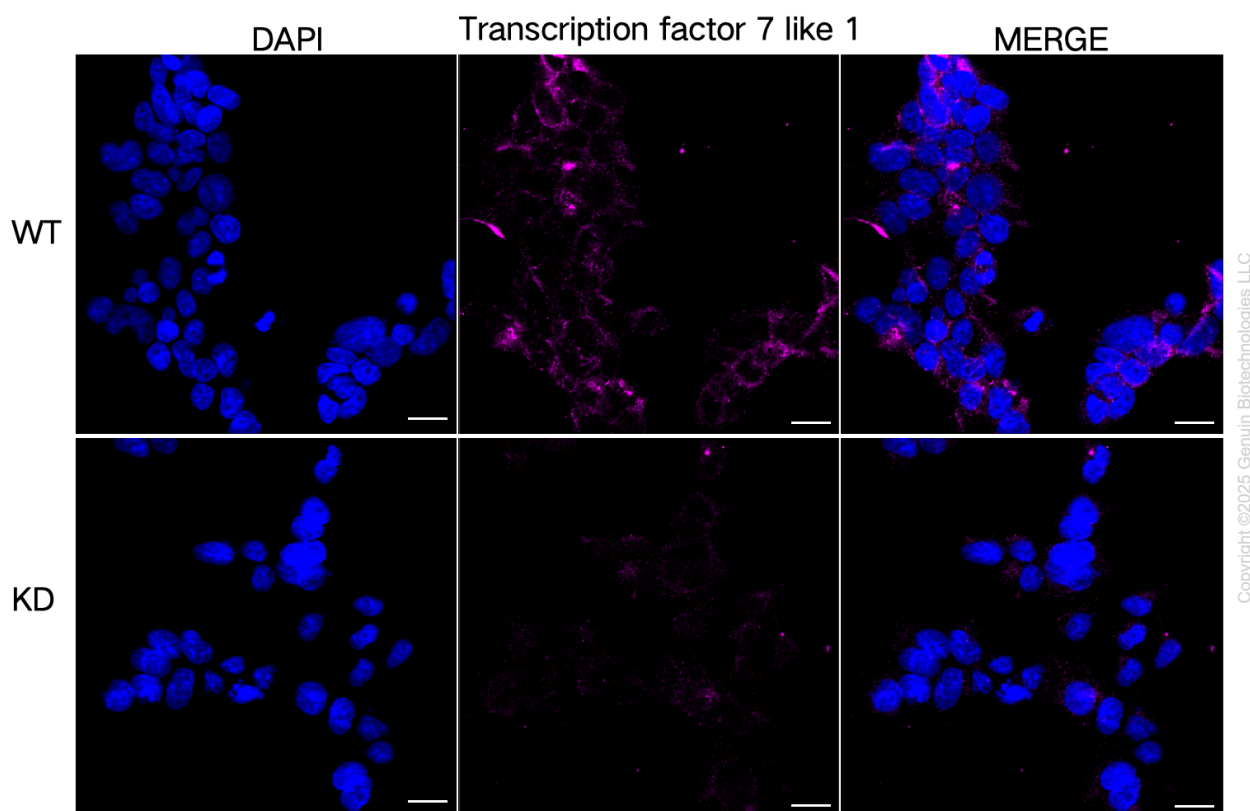
SALES@GENUINBIOTECH.COM
FAX: +1-540-855-7041

WWW.GENUINBIOTECH.COM



Copyright ©2025 Genuin Biotechnologies LLC

Validation of Transcription factor 7 like 1 knockdown using flow cytometry. Wild-type(WT, Blue) and knockdown(KD, Green) HeLa cells were stained with anti-Transcription factor 7 like 1 antibody (Cat#62627, 1:2,000) and analyzed using BD flow cytometer.



Immunocytochemical staining of HeLa cells using anti-Transcription factor 7 like 1 antibody (Cat#62627, 1:1,000), Top panel: wild-type (WT); Bottom panel: Transcription factor 7 like 1 shRNA knockdown (KD). Nuclei were stained blue with DAPI; Transcription factor 7 like 1 was stained magenta with Alexa Fluor® 647. Scale bar, 20 μ m.