

KD-Validated Anti-SMARCA4 Recombinant Rabbit Monoclonal Antibody



Catalog #: 62628

Aliases

SMARCA4; SWI/SNF Related, Matrix Associated, Actin Dependent Regulator Of Chromatin, Subfamily A, Member 4; BRG1; Mitotic Growth And Transcription Activator; ATP-Dependent Helicase SMARCA4; SNF2-BETA; HSNF2b; BAF190; SNF2LB; SNF2L4; SNF2; SWI2; Global Transcription Activator Homologous Sequence; Sucrose Nonfermenting-Like 4; Transcription Activator BRG1; BRG1-Associated Factor 190A; Protein Brahma Homolog 1; BRM/SWI2-Related Gene 1; Homeotic Gene Regulator; Brahma Protein-Like 1; Nuclear Protein GRB1; Protein BRG-1; SNF2-Like 4; FLJ39786; BAF190A; SWI/SNF-Related Matrix-Associated Actin-Dependent Regulator Of Chromatin Subfamily A Member 4; EC 3.6.4.-; SNF2-Beta; EC 3.6.1; MRD16; RTPS2; SNF2B; CSS4

Background

Gene Name: SMARCA4

NCBI Gene Entry: [6597](#)

UniProt Entry: [P51532](#)

Application Information

Molecular Weight: Predicted, 185 kDa, observed, 185 kDa

Clonality: Rabbit monoclonal antibody

Clone ID: 24GB2065

Species Reactivity: Human, mouse, rat

Applications Tested: Western blotting (WB), flow cytometry (FCM), immunocytochemistry (IC)

Immunogen

A synthesized peptide derived from human BRG1

Isotype

Rabbit IgG

Storage Buffer

Supplied in PBS (pH 7.4) containing 50% glycerol, and 0.02% sodium azide.

Storage

Store at -20 °C for one year.

Recommended Dilutions

SUPPORT

SUPPORT@GENUINBIOTECH.COM
TEL: +1-540-855-7041

ORDERS

SALES@GENUINBIOTECH.COM
FAX: +1-540-855-7041

WWW.GENUINBIOTECH.COM

KD-Validated Anti-SMARCA4 Recombinant Rabbit Monoclonal Antibody

PAGE 2

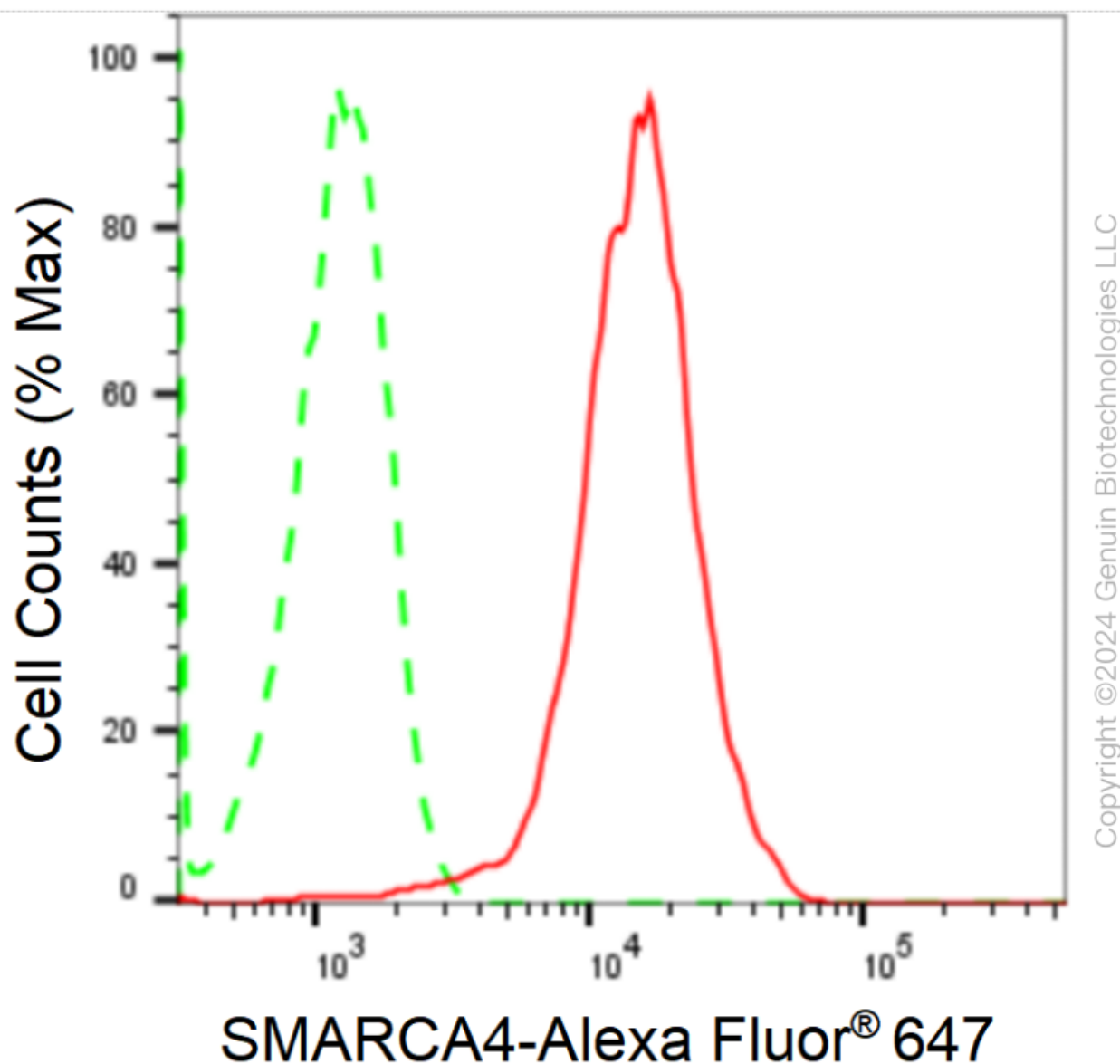
Western Blotting (WB): 1:4,000-1:20,000

Flow Cytometry (FCM): 1:2,000

Immunocytochemistry (IC): 1:100-1:1,000

Note: This product is for research use only.

Validation Data



Flow cytometric analysis of SMARCA4 expression in HepG2 cells using anti-SMARCA4 antibody (Cat#62628, 1:2,000). Green, isotype control; red, SMARCA4.

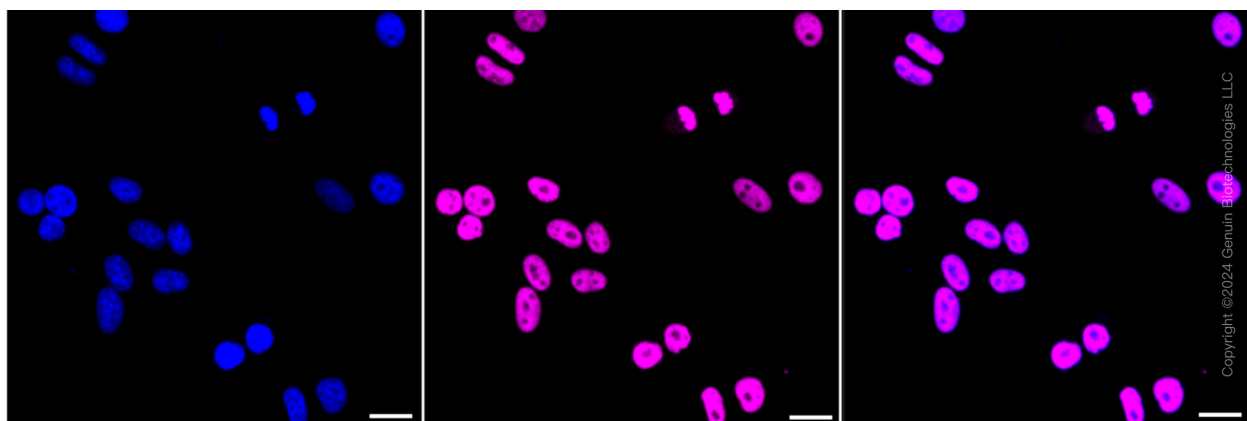
SUPPORT

SUPPORT@GENUINBIOTECH.COM
TEL: +1-540-855-7041

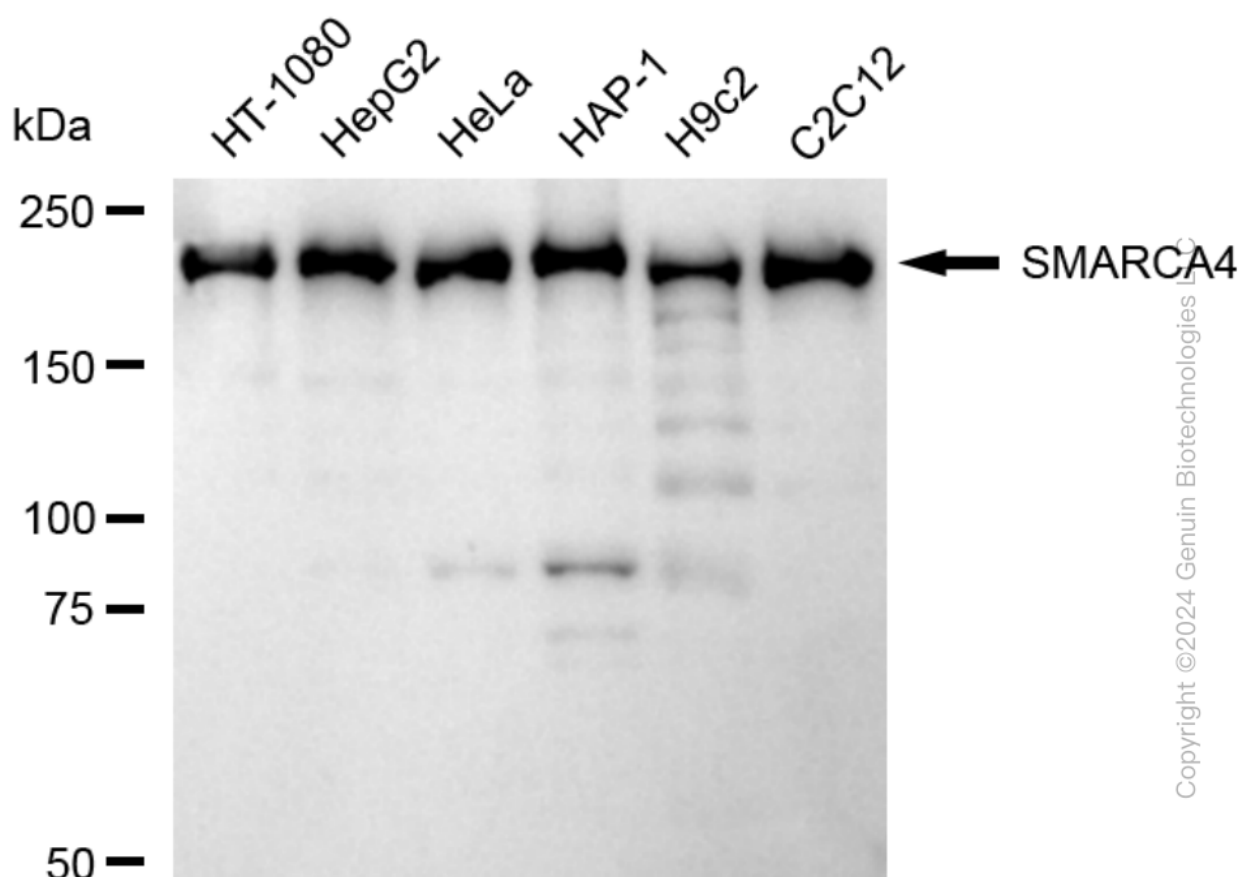
ORDERS

SALES@GENUINBIOTECH.COM
FAX: +1-540-855-7041

WWW.GENUINBIOTECH.COM



Immunocytochemical staining of HepG2 cells with anti-SMARCA4 antibody (Cat#62628, 1:1,000). Nuclei were stained blue with DAPI; SMARCA4 was stained magenta with Alexa Fluor® 647. Images were taken using Leica stellaris 5. Protein abundance based on laser Intensity and smart gain: High. Scale bar: 20 μ m.



Western blotting analysis using anti-SMARCA4 antibody (Cat#62628). Total cell lysates (30 μ g) from various cell lines were loaded and separated by SDS-PAGE. The blot was incubated with anti-SMARCA4 antibody (Cat#62628, 1:20,000) and HRP-conjugated goat anti-rabbit secondary antibody (Cat#201, 1:20,000) respectively. Image was developed using FeQ™ ECL Substrate Kit

SUPPORT

SUPPORT@GENUINBIOTECH.COM
TEL: +1-540-855-7041

ORDERS

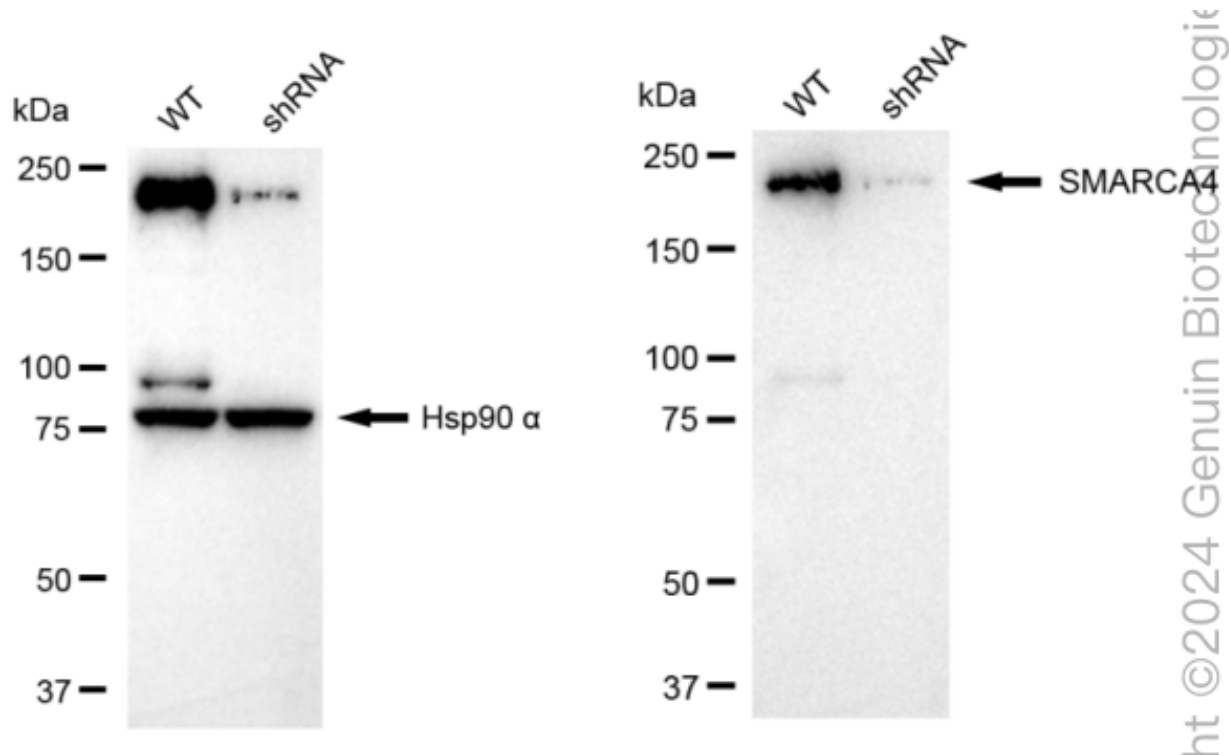
SALES@GENUINBIOTECH.COM
FAX: +1-540-855-7041

WWW.GENUINBIOTECH.COM

KD-Validated Anti-SMARCA4 Recombinant Rabbit Monoclonal Antibody

PAGE 4

(Cat#226).



Western blotting analysis using anti-SMARCA4 antibody (Cat#62628). SMARCA4 expression in wild type (WT) and SMARCA4 shRNA knockdown (KD) HeLa cells with 20 μ g of total cell lysates. Hsp90 α serves as a loading control. The blot was incubated with anti-SMARCA4 antibody (Cat#62628, 1:20,000) and HRP-conjugated goat anti-rabbit secondary antibody (Cat#201, 1:20,000) respectively. Image was developed using NaQ™ ECL Substrate Kit (Cat#716).

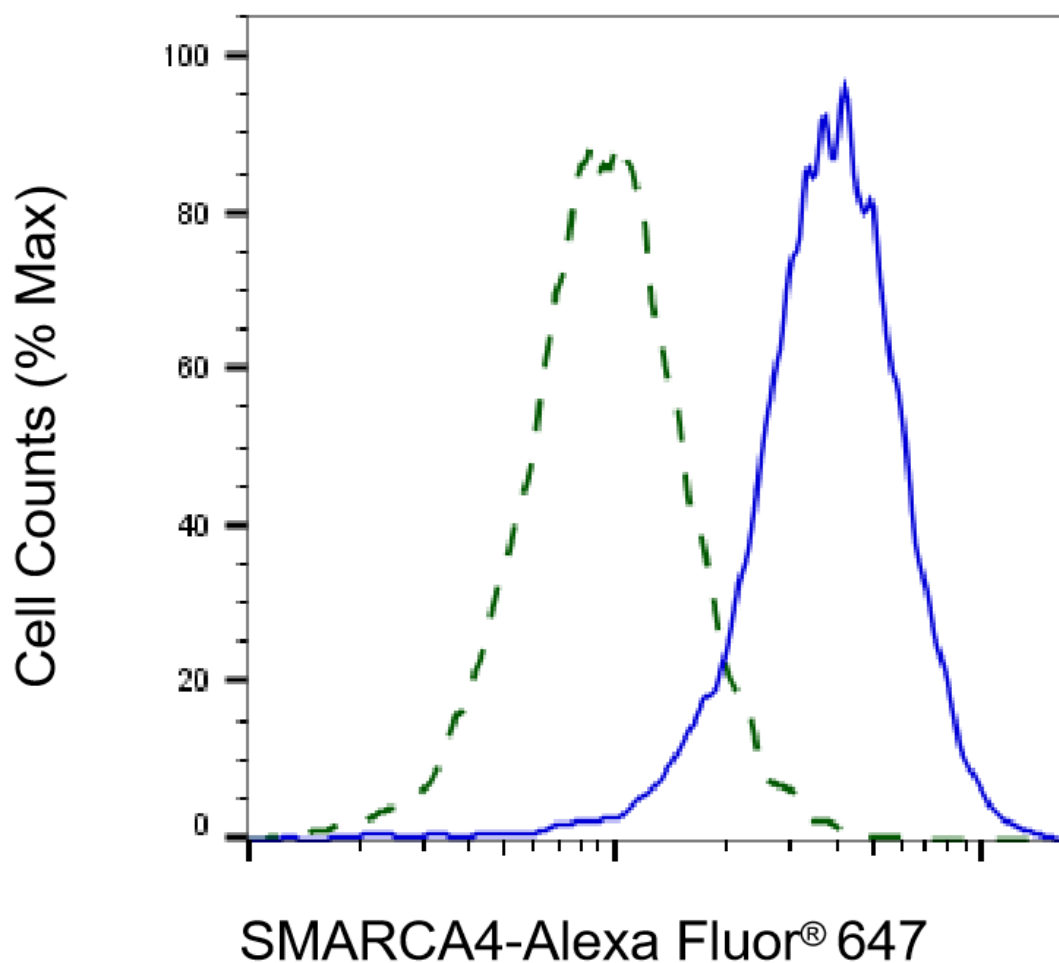
SUPPORT

SUPPORT@GENUINBIOTECH.COM
TEL: +1-540-855-7041

ORDERS

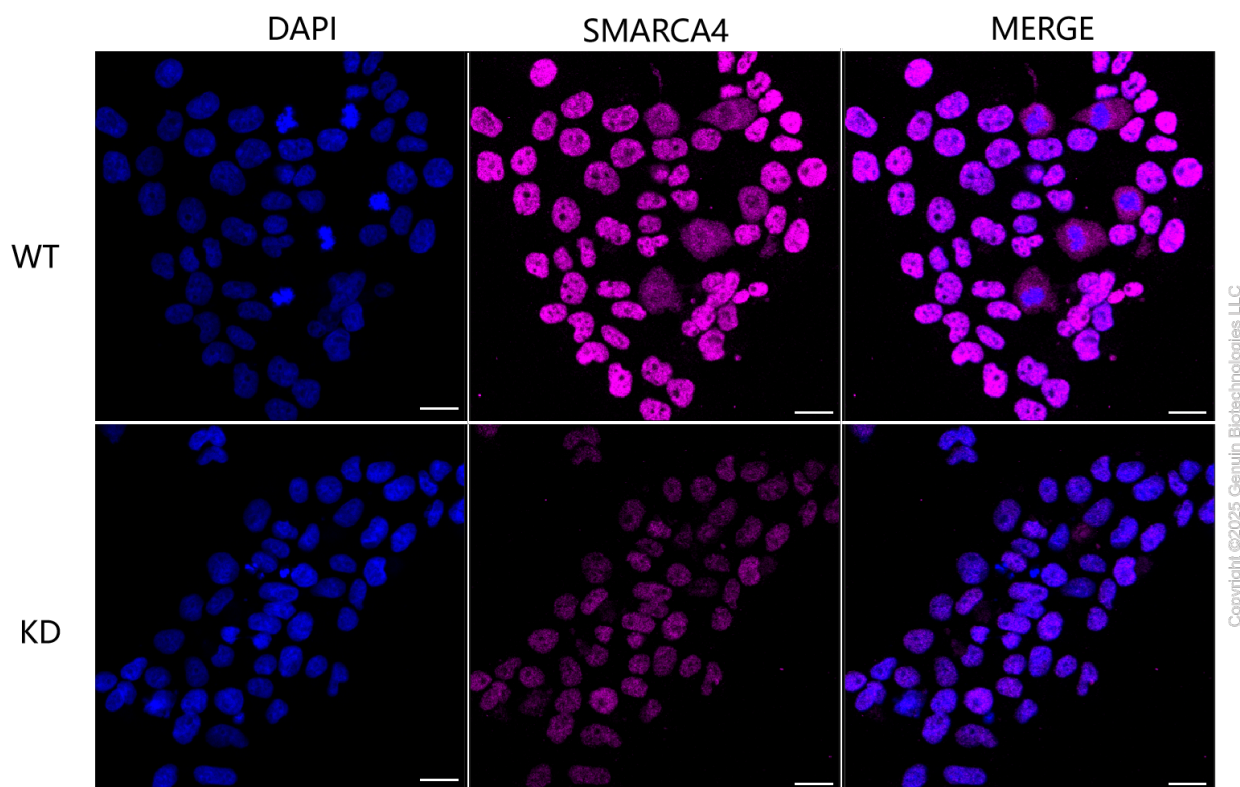
SALES@GENUINBIOTECH.COM
FAX: +1-540-855-7041

WWW.GENUINBIOTECH.COM



Copyright ©2025 Genuin Biotechnologies LLC

Validation of SMARCA4 knockdown using flow cytometry. Wild-type(WT, Blue) and knockdown(KD, Green) HeLa cells were stained with anti-SMARCA4 antibody (Cat#62628, 1:2,000) and analyzed using BD flow cytometer.



Immunocytochemical staining of HeLa cells using anti-SMARCA4 antibody (Cat#62628, 1:1,000), Top panel: wild-type (WT); Bottom panel: SMARCA4 shRNA knockdown (KD). Nuclei were stained blue with DAPI; SMARCA4 was stained magenta with Alexa Fluor® 647. Scale bar, 20 μ m.