

KD-Validated Anti-SMAD Family Member 1 Recombinant Rabbit Monoclonal Antibody



Catalog #: 62629

Aliases

SMAD1; SMAD Family Member 1; MADR1; JV4-1; MADH1; Mothers Against Decapentaplegic Homolog 1; Mothers Against DPP Homolog 1; Mad-Related Protein 1; BSP-1; BSP1; MAD, Mothers Against Decapentaplegic Homolog 1 (Drosophila); Transforming Growth Factor-Beta Signaling Protein 1; Transforming Growth Factor-Beta-Signaling Protein 1; SMAD, Mothers Against DPP Homolog 1 (Drosophila); MAD, Mothers Against Decapentaplegic Homolog 1; SMAD, Mothers Against DPP Homolog 1; TGF-Beta Signaling Protein 1; MAD Homolog 1; SMAD 1; HSMAD1; Smad1; JV41

Background

Gene Name: SMAD1

NCBI Gene Entry: [4086](#)

UniProt Entry: [Q15797](#)

Application Information

Molecular Weight: Predicted, 52 kDa, observed, 58 kDa

Clonality: Rabbit monoclonal antibody

Clone ID: 24GB2100

Species Reactivity: Human

Applications Tested: Western blotting (WB), flow cytometry (FCM), immunocytochemistry (IC)

Immunogen

A synthesized peptide derived from human Smad1

Isotype

Rabbit IgG

Storage Buffer

Supplied in PBS (pH 7.4) containing 50% glycerol, and 0.02% sodium azide.

Storage

Store at -20 °C for one year.

Recommended Dilutions

Western Blotting (WB): 1:1,000-1:5,000

Flow Cytometry (FCM): 1:2,000

SUPPORT

SUPPORT@GENUINBIOTECH.COM
TEL: +1-540-855-7041

ORDERS

SALES@GENUINBIOTECH.COM
FAX: +1-540-855-7041

WWW.GENUINBIOTECH.COM

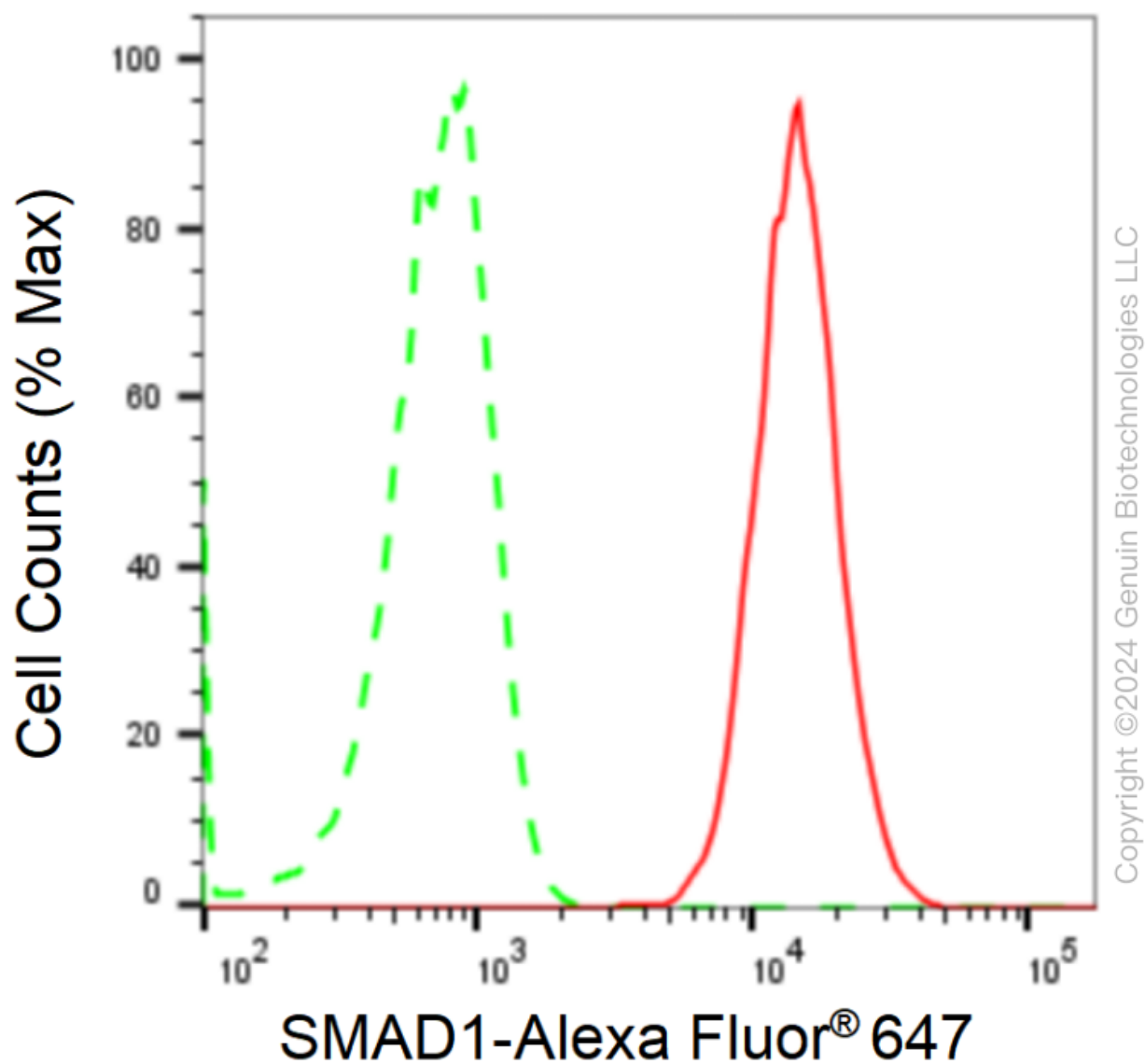
KD-Validated Anti-SMAD Family Member 1 Recombinant Rabbit Monoclonal Antibody

PAGE 2

Immunocytochemistry (IC): 1:100-1:1,000

Note: This product is for research use only.

Validation Data



Flow cytometric analysis of SMAD1 expression in HAP-1 cells using anti-SMAD1 antibody (Cat#62629, 1:2,000). Green, isotype control; red, SMAD1.

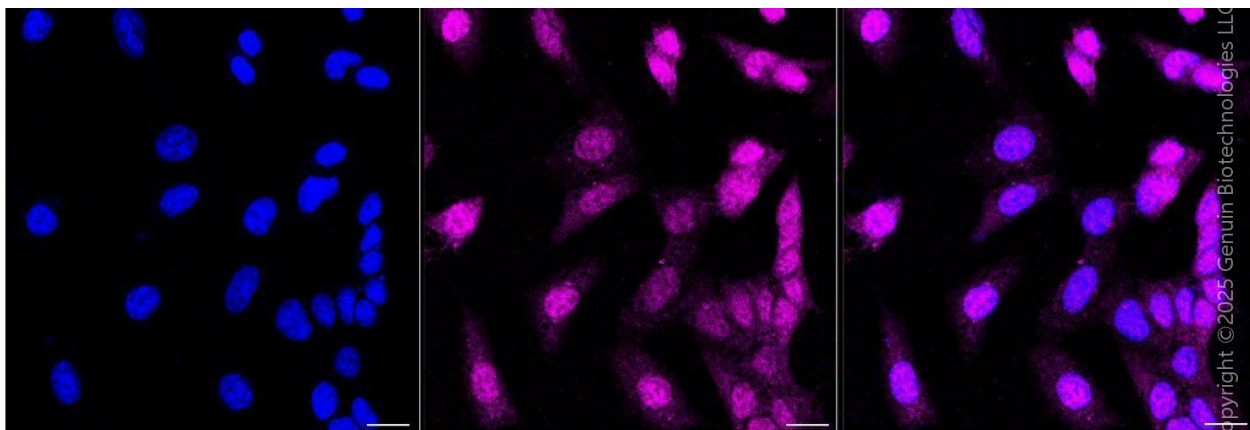
SUPPORT

SUPPORT@GENUINBIOTECH.COM
TEL: +1-540-855-7041

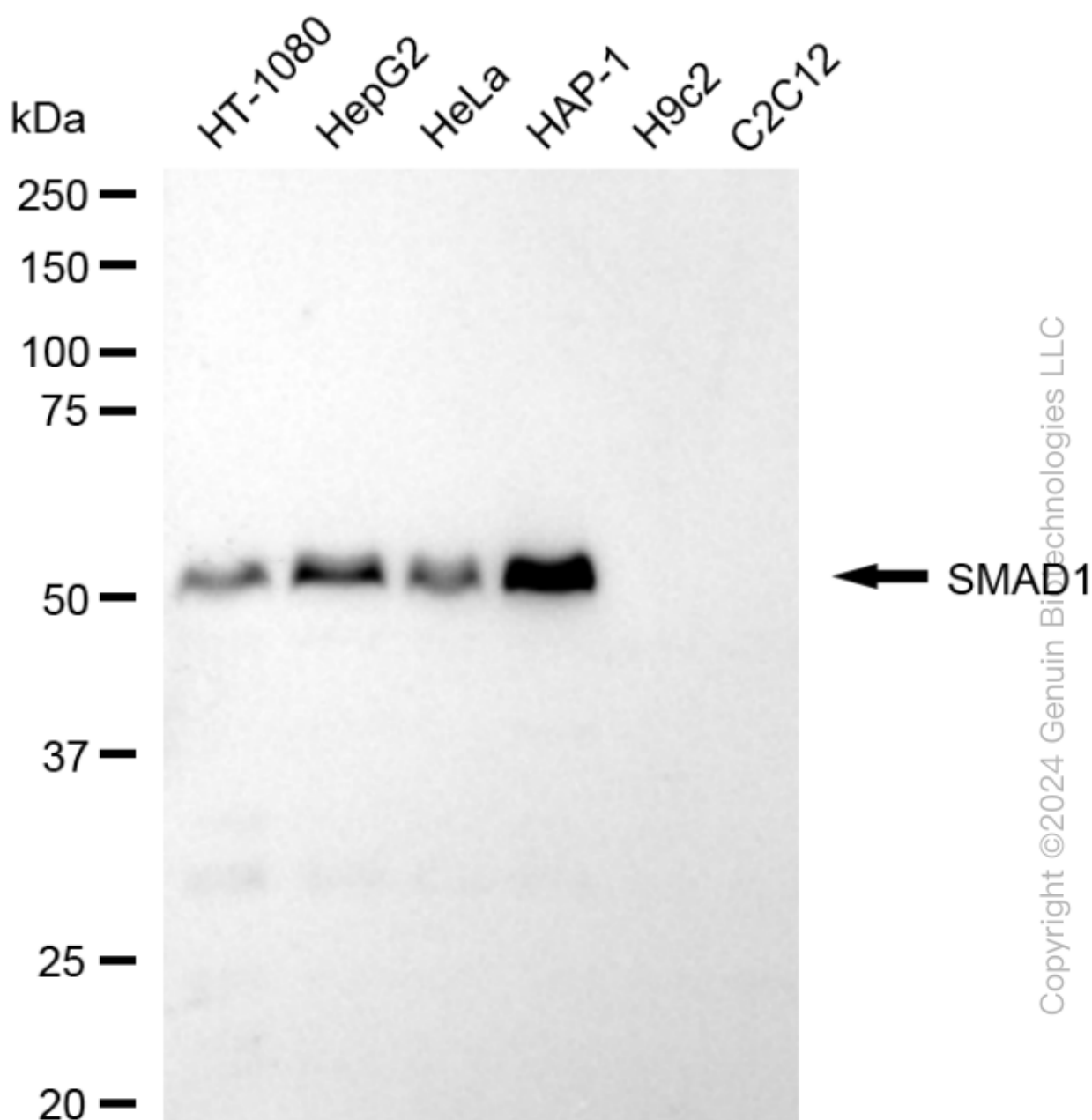
ORDERS

SALES@GENUINBIOTECH.COM
FAX: +1-540-855-7041

WWW.GENUINBIOTECH.COM



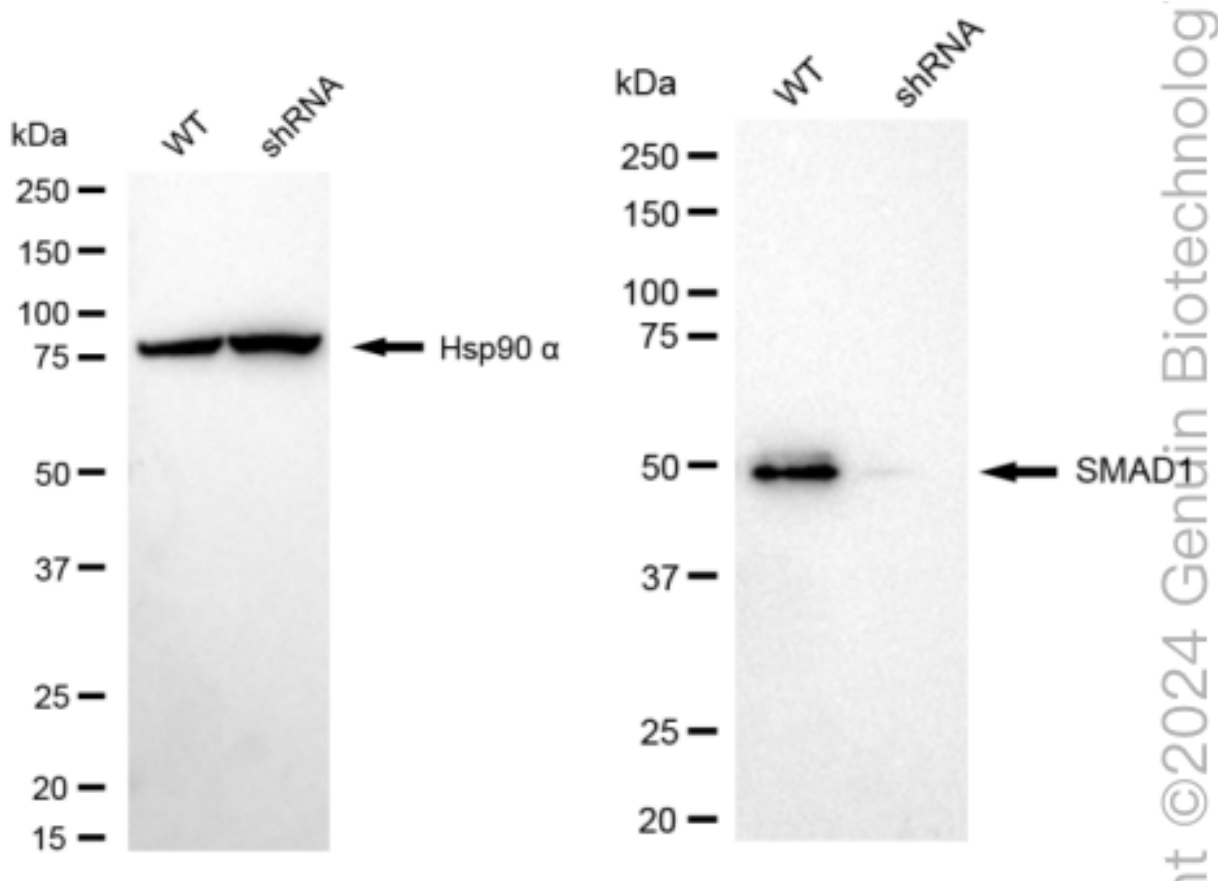
Immunocytochemical staining of HAP-1 cells with anti-SMAD1 antibody (Cat#62629, 1:1,000) . Nuclei were stained blue with DAPI; SMAD1 was stained magenta with Alexa Fluor® 647. Images were taken using Leica stellaris 5. Protein abundance based on laser Intensity and smart gain: High. Scale bar, 20 μ m.



Western blotting analysis using anti-SMAD1 antibody (Cat#62629). Total cell lysates (30 µg) from various cell lines were loaded and separated by SDS-PAGE. The blot was incubated with anti-SMAD1 antibody (Cat#62629, 1:5,000) and HRP-conjugated goat anti-rabbit secondary antibody (Cat#201, 1:20,000) respectively. Image was developed using FeQ™ ECL Substrate Kit (Cat#226).

KD-Validated Anti-SMAD Family Member 1 Recombinant Rabbit Monoclonal Antibody

PAGE 5



Western blotting analysis using anti-SMAD1 antibody (Cat#62629). SMAD1 expression in wild type (WT) and SMAD1 shRNA knockdown (KD) HeLa cells with 20 μ g of total cell lysates. Hsp90 α serves as a loading control. The blot was incubated with anti-SMAD1 antibody (Cat#62629, 1:5,000) and HRP-conjugated goat anti-rabbit secondary antibody (Cat#201, 1:20,000) respectively. Image was developed using NaQ™ ECL Substrate Kit (Cat#716).

SUPPORT

SUPPORT@GENUINBIOTECH.COM
TEL: +1-540-855-7041

ORDERS

SALES@GENUINBIOTECH.COM
FAX: +1-540-855-7041

WWW.GENUINBIOTECH.COM