

KD-Validated Anti-TRK fused gene Recombinant Rabbit Monoclonal Antibody



Catalog #: 62630

Aliases

TFG; Trafficking From ER To Golgi Regulator; SPG57; TF6; TRK-Fused Gene Protein; Protein TFG; FLJ36137; TRK-Fused Gene; TRKT3 Oncogene; TRK-Fused;HMSNP; TRKT3

Background

Gene Name: TFG

NCBI Gene Entry: [10342](#)

UniProt Entry: [Q92734](#)

Application Information

Molecular Weight: Predicted, 43 kDa, observed, 55 kDa

Clonality: Rabbit monoclonal antibody

Clone ID: 24GB2115

Species Reactivity: Human, mouse, rat

Applications Tested: Western blotting (WB), flow cytometry (FCM), immunocytochemistry (IC)

Immunogen

A synthesized peptide derived from human TRK fused gene

Isotype

Rabbit IgG

Storage Buffer

Supplied in PBS (pH 7.4) containing 50% glycerol, and 0.02% sodium azide.

Storage

Store at -20 °C for one year.

Recommended Dilutions

Western Blotting (WB): 1:1,000-1:5,000

Flow Cytometry (FCM): 1:2,000

Immunocytochemistry (IC): 1:100-1:1,000

Note: This product is for research use only.

Validation Data

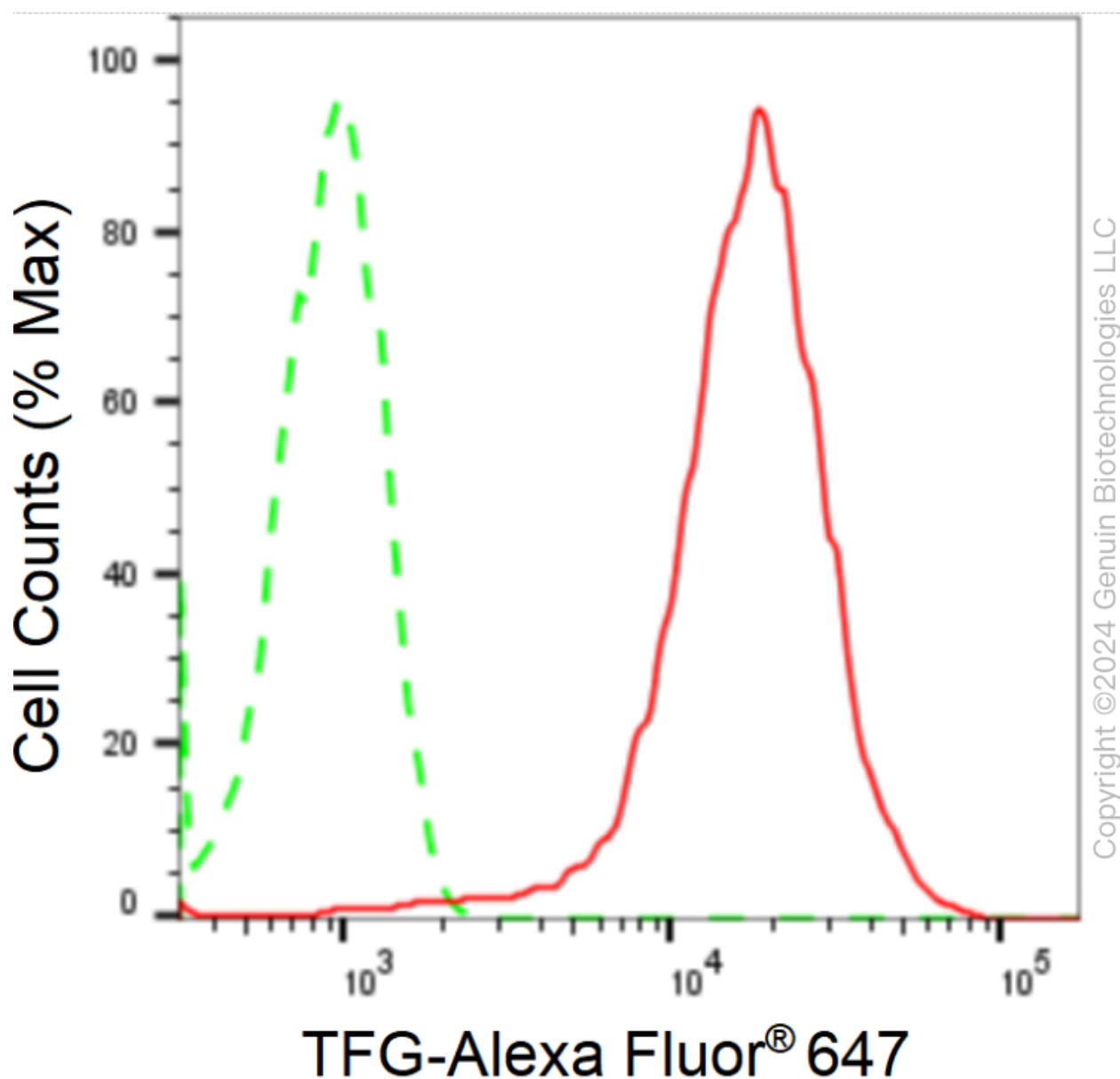
SUPPORT

SUPPORT@GENUINBIOTECH.COM
TEL: +1-540-855-7041

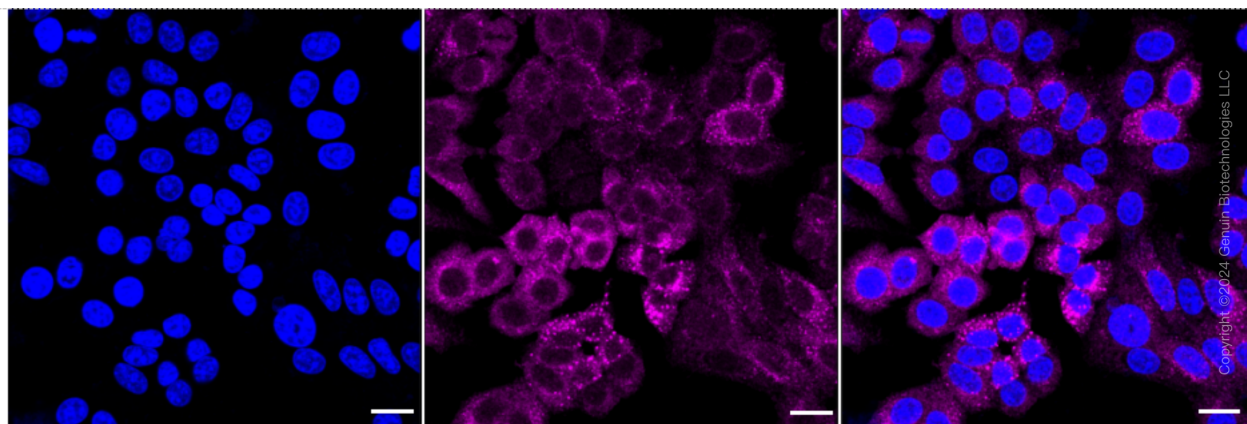
ORDERS

SALES@GENUINBIOTECH.COM
FAX: +1-540-855-7041

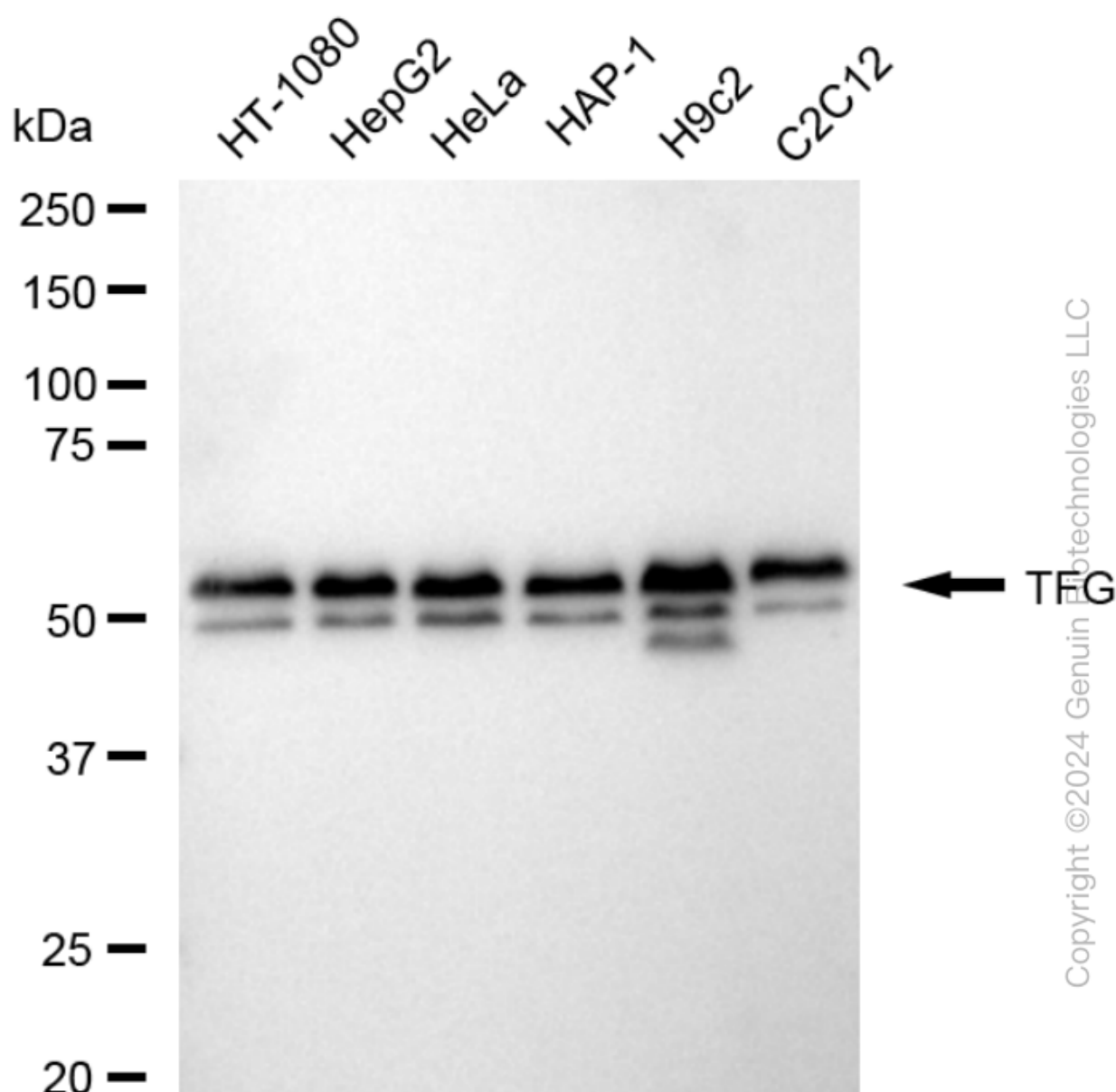
WWW.GENUINBIOTECH.COM



Flow cytometric analysis of TFG expression in HepG2 cells using anti-TFG antibody (Cat#62630, 1:2,000). Green, isotype control; red, TFG.



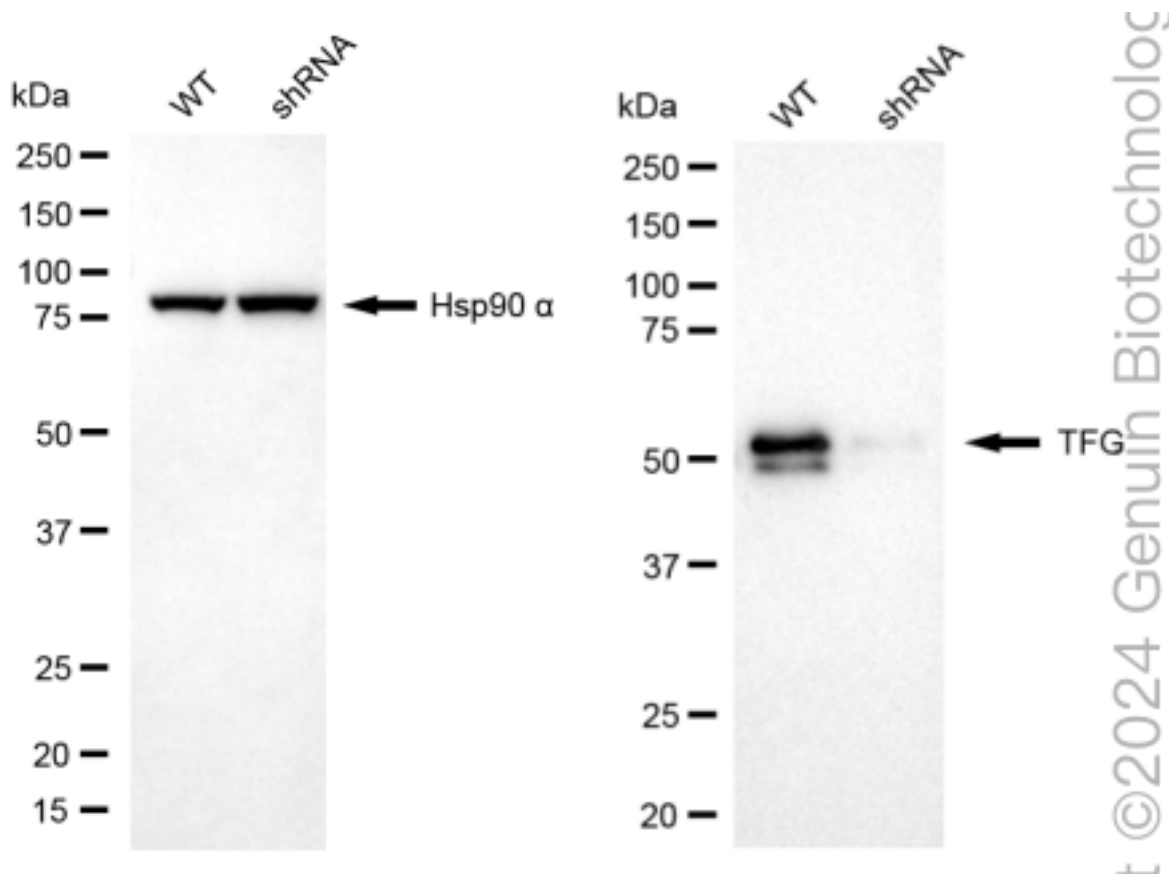
Immunocytochemical staining of HepG2 cells with anti-TFG antibody (Cat#62630, 1:1,000). Nuclei were stained blue with DAPI; TFG was stained magenta with Alexa Fluor® 647. Images were taken using Leica stellaris 5. Protein abundance based on laser Intensity and smart gain: High. Scale bar: 20 μm.



Western blotting analysis using anti-TFG antibody (Cat#62630). Total cell lysates (30 μ g) from various cell lines were loaded and separated by SDS-PAGE. The blot was incubated with anti-TFG antibody (Cat#62630, 1:20,000) and HRP-conjugated goat anti-rabbit secondary antibody (Cat#201, 1:20,000) respectively. Image was developed using FeQ™ ECL Substrate Kit (Cat#226).

KD-Validated Anti-TRK fused gene Recombinant Rabbit Monoclonal Antibody

PAGE 5



Western blotting analysis using anti-TFG antibody (Cat#62630). TFG expression in wild type (WT) and TFG shRNA knockdown (KD) HeLa cells with 20 µg of total cell lysates. Hsp90 α serves as a loading control. The blot was incubated with anti-TFG antibody (Cat#62630, 1:20,000) and HRP-conjugated goat anti-rabbit secondary antibody (Cat#201, 1:20,000) respectively. Image was developed using NaQ™ ECL Substrate Kit (Cat#716).

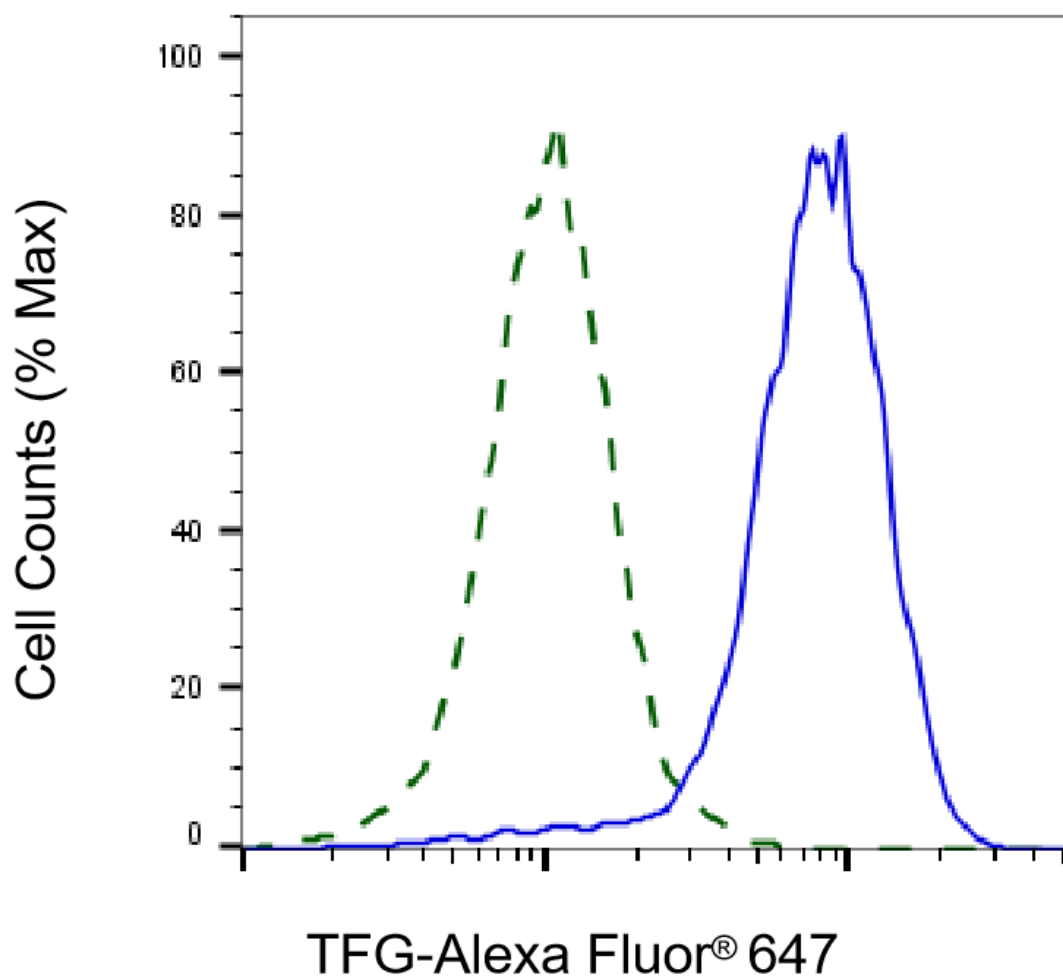
SUPPORT

SUPPORT@GENUINBIOTECH.COM
TEL: +1-540-855-7041

ORDERS

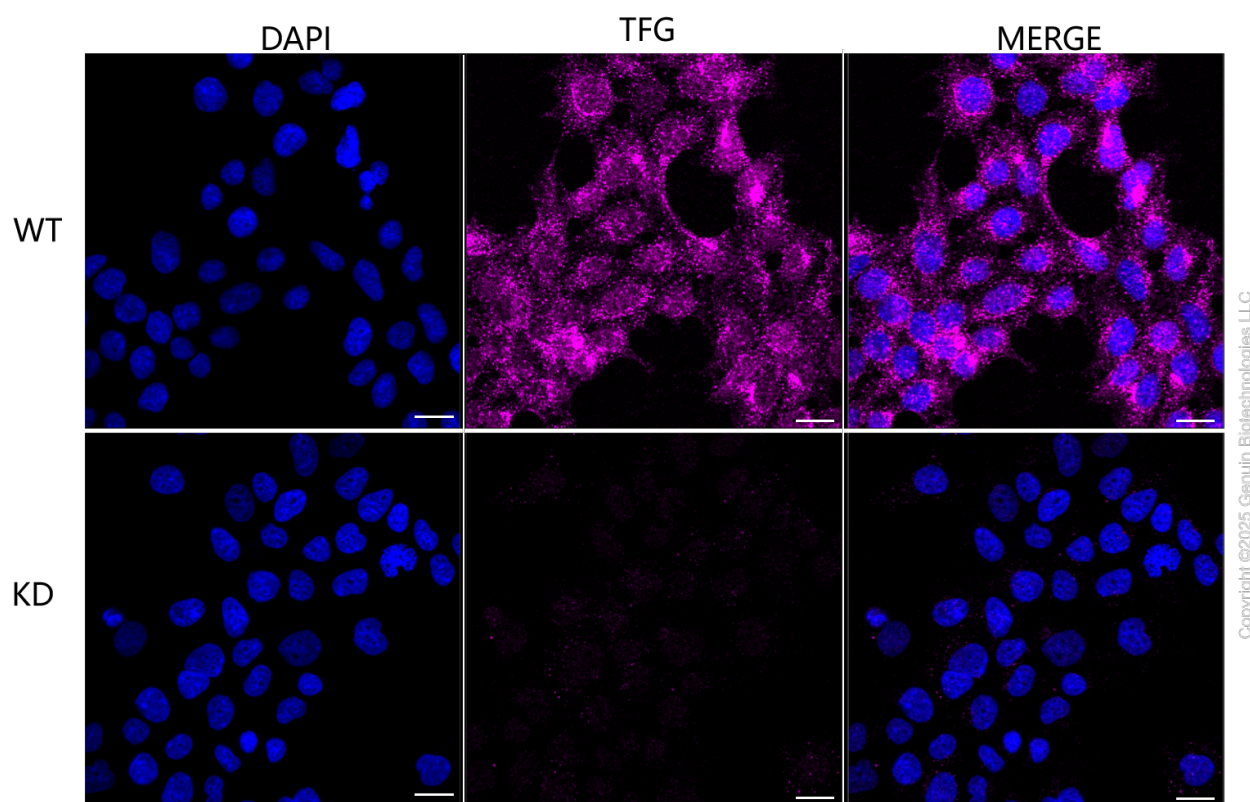
SALES@GENUINBIOTECH.COM
FAX: +1-540-855-7041

WWW.GENUINBIOTECH.COM



Copyright ©2025 Genuin Biotechnologies LLC

Validation of TFG knockdown using flow cytometry. Wild-type(WT, Blue) and knockdown(KD, Green) HeLa cells were stained with anti-TFG antibody (Cat#62630, 1:2,000) and analyzed using BD flow cytometer.



Immunocytochemical staining of HeLa cells using anti-TFG antibody (Cat#62630, 1:1,000), Top panel: wild-type (WT); Bottom panel: TFG shRNA knockdown (KD). Nuclei were stained blue with DAPI; TFG was stained magenta with Alexa Fluor® 647. Scale bar, 20 μ m.