

KD-Validated Anti-TRPM7 Recombinant Rabbit Monoclonal Antibody



Catalog #: 62634

Aliases

TRPM7; Transient Receptor Potential Cation Channel Subfamily M Member 7; LTRPC7; CHAK1; TRP-PLIK; Long Transient Receptor Potential Channel 7; Channel-Kinase 1; EC 2.7.11.1; LTrpC-7; Transient Receptor Potential Cation Channel, Subfamily M, Member 7; Transient Receptor Potential-Phospholipase C-Interacting Kinase; LTRPC Ion Channel Family Member 7; ALSPDC; LTrpC7; CHAK

Background

Gene Name: TRPM7

NCBI Gene Entry: [54822](#)

UniProt Entry: [Q96QT4](#)

Application Information

Molecular Weight: Predicted, 213 kDa, observed, 260 kDa

Clonality: Rabbit monoclonal antibody

Clone ID: 24GB2250

Species Reactivity: Human

Applications Tested: Western blotting (WB), flow cytometry (FCM), immunocytochemistry (IC)

Immunogen

A synthesized peptide derived from human TRPM7

Isotype

Rabbit IgG

Storage Buffer

Supplied in PBS (pH 7.4) containing 50% glycerol, and 0.02% sodium azide.

Storage

Store at -20 °C for one year.

Recommended Dilutions

Western Blotting (WB): 1:1,000-1:5,000

Flow Cytometry (FCM): 1:2,000

Immunocytochemistry (IC): 1:100-1:1,000

SUPPORT

SUPPORT@GENUINBIOTECH.COM
TEL: +1-540-855-7041

ORDERS

SALES@GENUINBIOTECH.COM
FAX: +1-540-855-7041

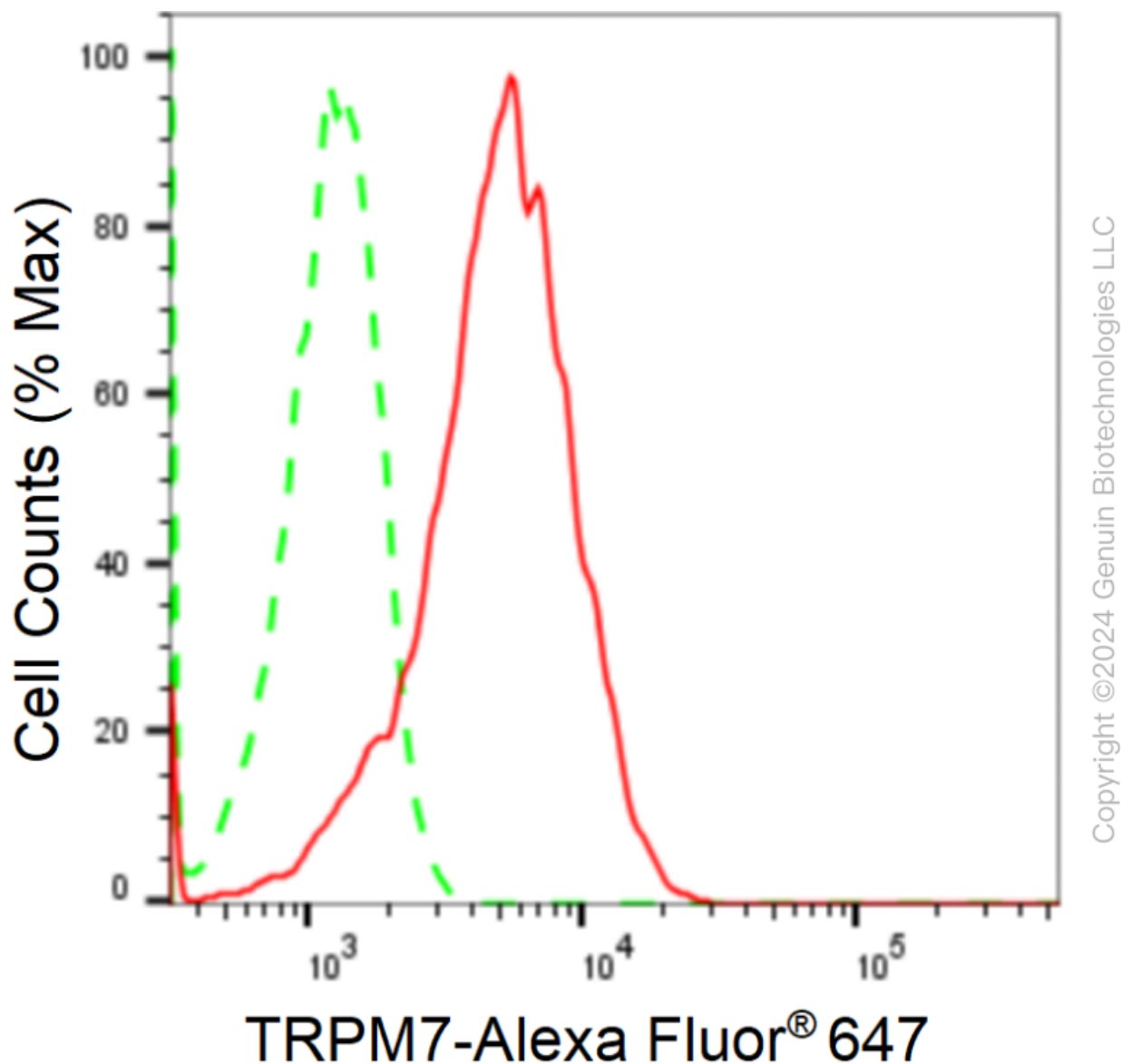
WWW.GENUINBIOTECH.COM

KD-Validated Anti-TRPM7 Recombinant Rabbit Monoclonal Antibody

PAGE 2

Note: This product is for research use only.

Validation Data



Flow cytometric analysis of TRPM7 expression in HepG2 cells using anti-TRPM7 antibody (Cat#62634, 1:2,000). Green, isotype control; red, TRPM7.

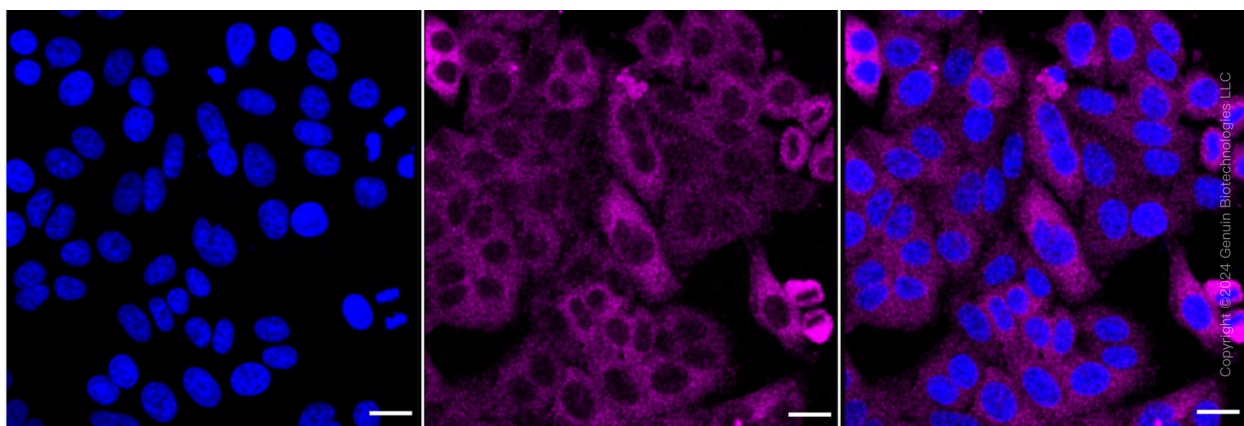
SUPPORT

SUPPORT@GENUINBIOTECH.COM
TEL: +1-540-855-7041

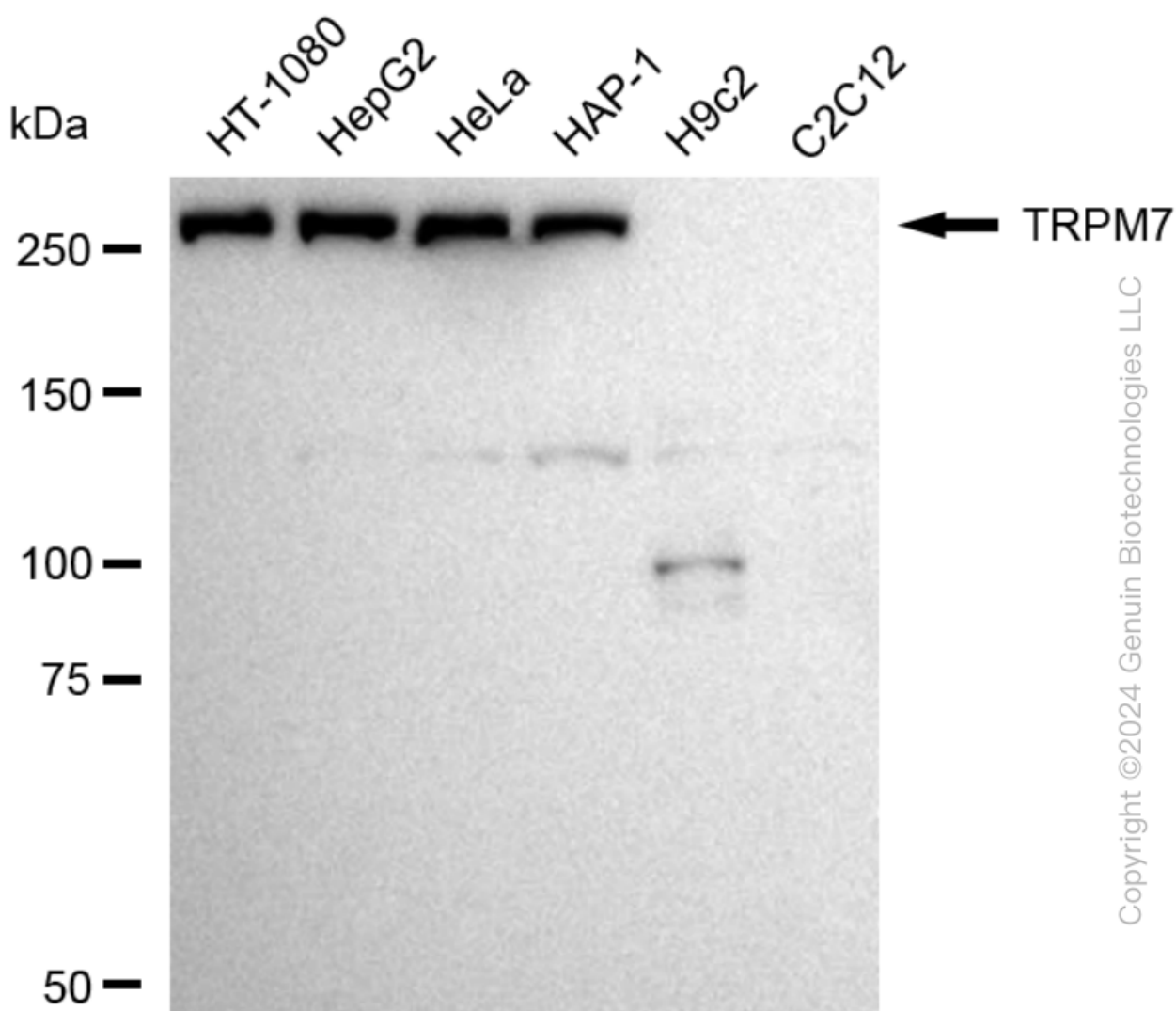
ORDERS

SALES@GENUINBIOTECH.COM
FAX: +1-540-855-7041

WWW.GENUINBIOTECH.COM



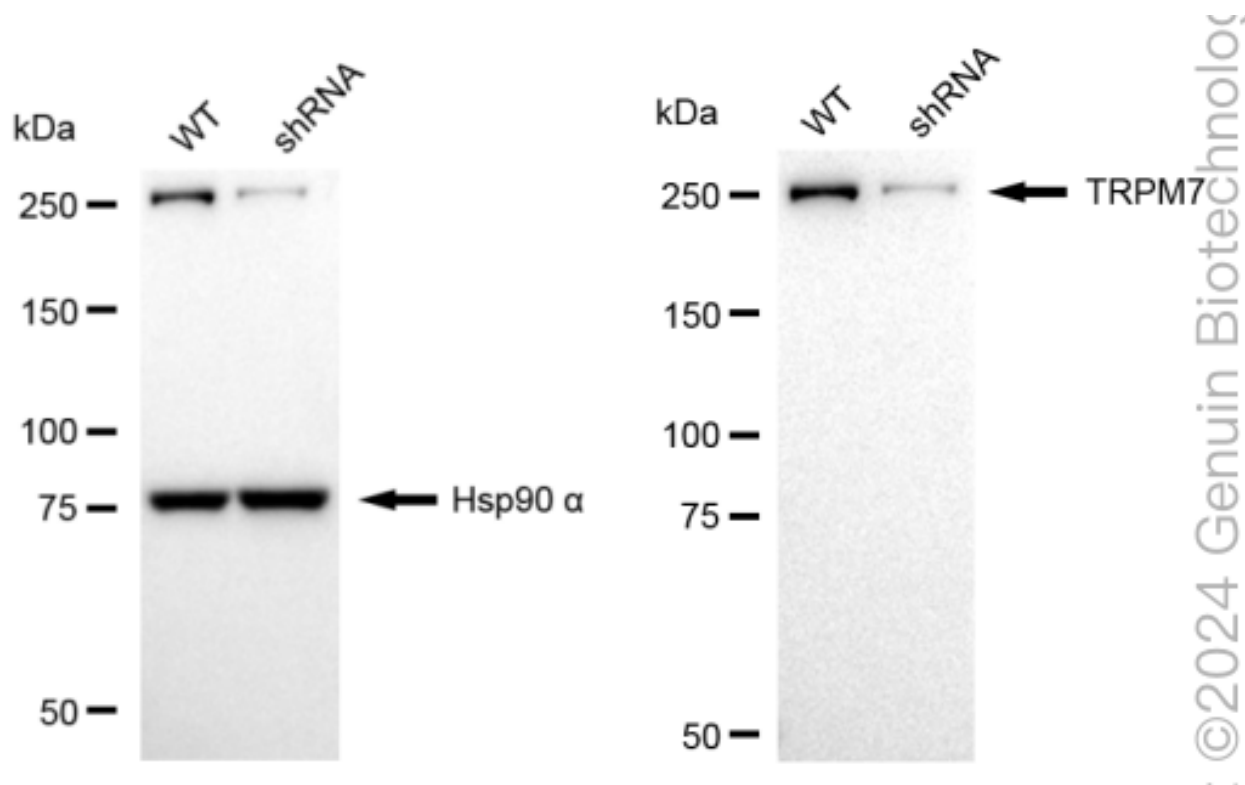
Immunocytochemical staining of HepG2 cells with anti-TRPM7 antibody (Cat#62634, 1:1,000). Nuclei were stained blue with DAPI;TRPM7 was stained magenta with Alexa Fluor® 647. Images were taken using Leica stellaris 5. Protein abundance based on laser Intensity and smart gain: Medium. Scale bar: 20 μ m.



KD-Validated Anti-TRPM7 Recombinant Rabbit Monoclonal Antibody

PAGE 4

Western blotting analysis using anti-TRPM7 antibody (Cat#62634). Total cell lysates (30 µg) from various cell lines were loaded and separated by SDS-PAGE. The blot was incubated with anti-TRPM7 antibody (Cat#62634, 1:5,000) and HRP-conjugated goat anti-rabbit secondary antibody (Cat#201, 1:20,000) respectively. Image was developed using FeQ™ ECL Substrate Kit (Cat#226).



Western blotting analysis using anti-TRPM7 antibody (Cat#62634). TRPM7 expression in wild type (WT) and TRPM7 shRNA knockdown (KD) HeLa cells with 20 µg of total cell lysates. Hsp90 α serves as a loading control. The blot was incubated with anti-TRPM7 antibody (Cat#62634, 1:5,000) and HRP-conjugated goat anti-rabbit secondary antibody (Cat#201, 1:20,000) respectively. Image was developed using NaQ™ ECL Substrate Kit (Cat#716).

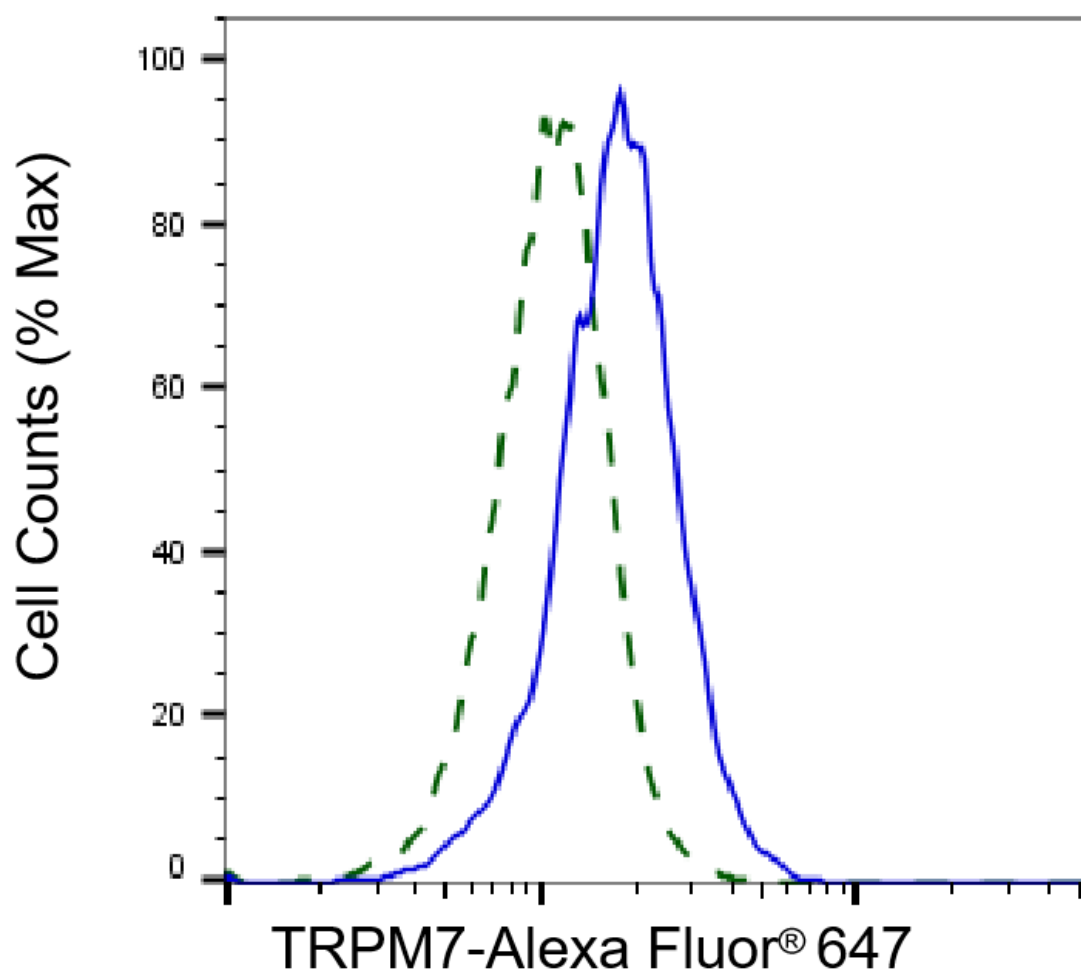
SUPPORT

SUPPORT@GENUINBIOTECH.COM
TEL: +1-540-855-7041

ORDERS

SALES@GENUINBIOTECH.COM
FAX: +1-540-855-7041

WWW.GENUINBIOTECH.COM



Copyright ©2025 Genuin Biotechnologies LLC

Validation of TRPM7 knockdown using flow cytometry. Wild-type(WT, Blue) and knockdown(KD, Green) HeLa cells were stained with anti-TRPM7 antibody (Cat#62634, 1:2,000) and analyzed using BD flow cytometer.