

KD-Validated Anti-Tubulin Beta 3 Class III Recombinant Rabbit Monoclonal Antibody



Catalog #: 62635

Aliases

TUBB3; Tubulin Beta 3 Class III; CFEOM3A; Beta-4; CFEOM3; Class III Beta-Tubulin; Tubulin Beta-3 Chain; Tubulin Beta-4 Chain; Tubulin Beta-III; Tubulin, Beta 3; FEOM3; TUBB4; Fibrosis Of Extraocular Muscles, Congenital, 3; CDCBM1; CDCBM

Background

Gene Name: TUBB3

NCBI Gene Entry: [10381](#)

UniProt Entry: [Q13509](#)

Application Information

Molecular Weight: Predicted, 50 kDa, observed, 55 kDa

Clonality: Rabbit monoclonal antibody

Clone ID: 24GB1740

Species Reactivity: Human, mouse

Applications Tested: Western blotting (WB), flow cytometry (FCM), immunocytochemistry (IC)

Immunogen

A synthesized peptide derived from human beta Tubulin III

Isotype

Rabbit IgG

Storage Buffer

Supplied in PBS (pH 7.4) containing 50% glycerol, and 0.02% sodium azide.

Storage

Store at -20 °C for one year.

Recommended Dilutions

Western Blotting (WB): 1:2,000-1:10,000

Flow Cytometry (FCM): 1:2,000

Immunocytochemistry (IC): 1:100-1:1,000

Note: This product is for research use only.

SUPPORT

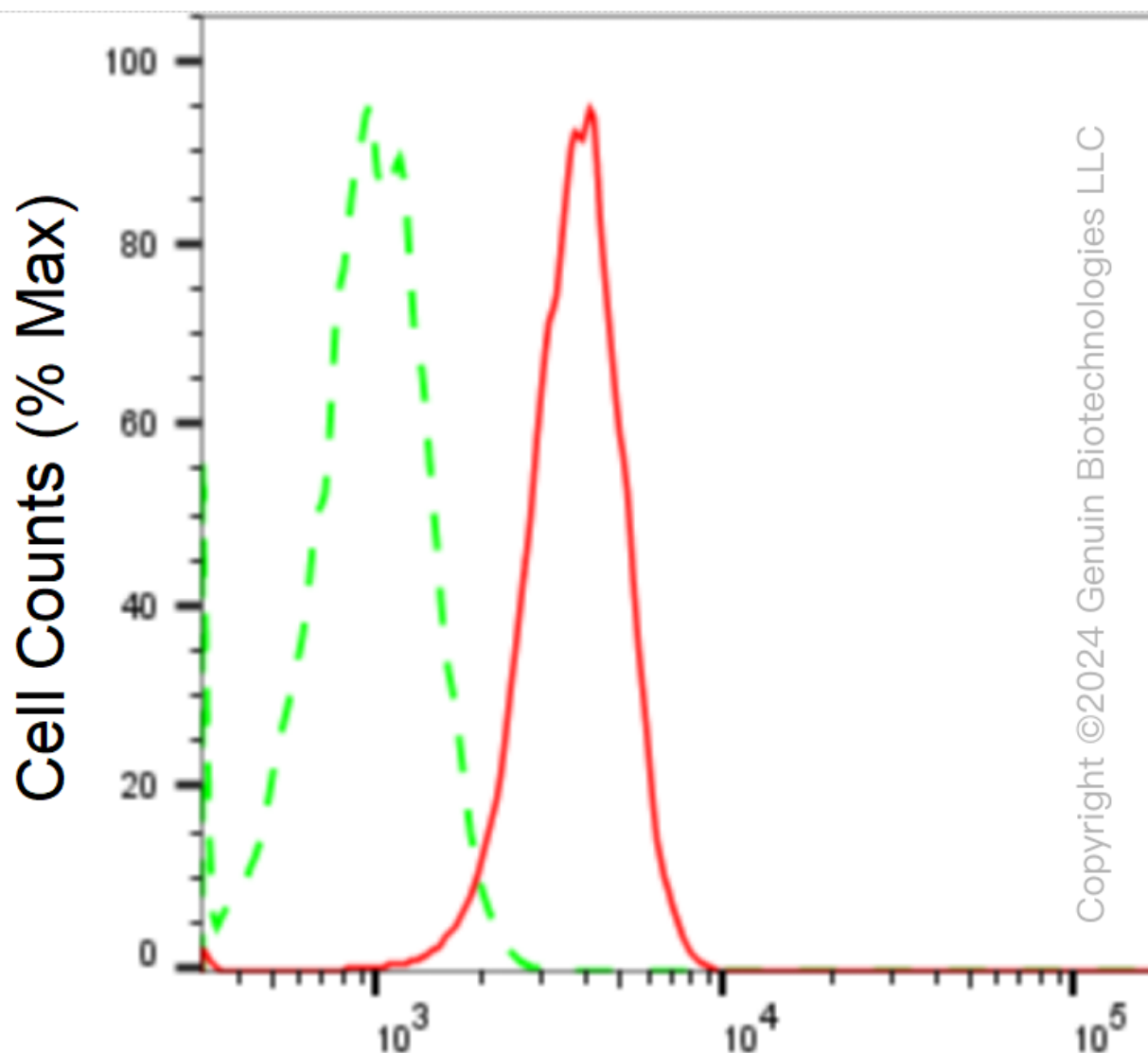
SUPPORT@GENUINBIOTECH.COM
TEL: +1-540-855-7041

ORDERS

SALES@GENUINBIOTECH.COM
FAX: +1-540-855-7041

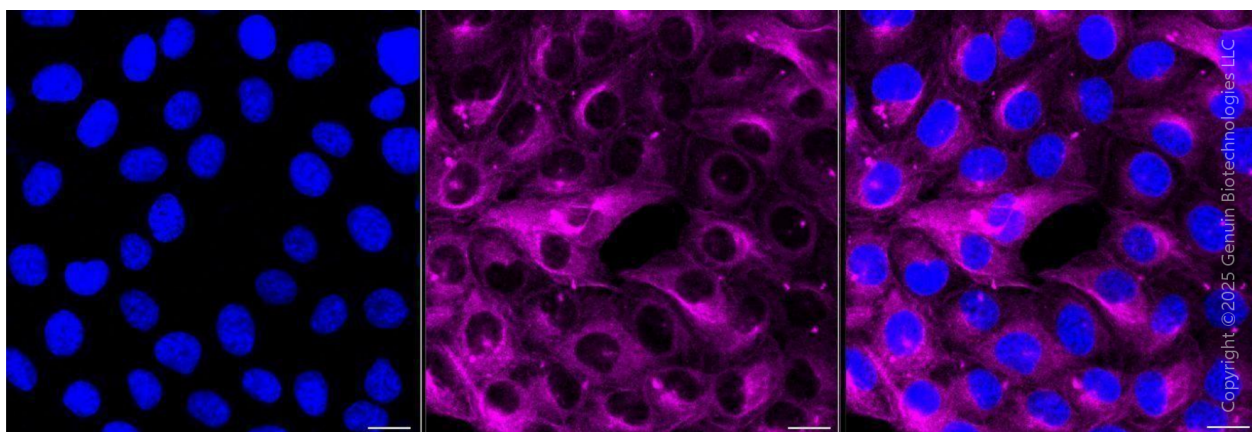
WWW.GENUINBIOTECH.COM

Validation Data

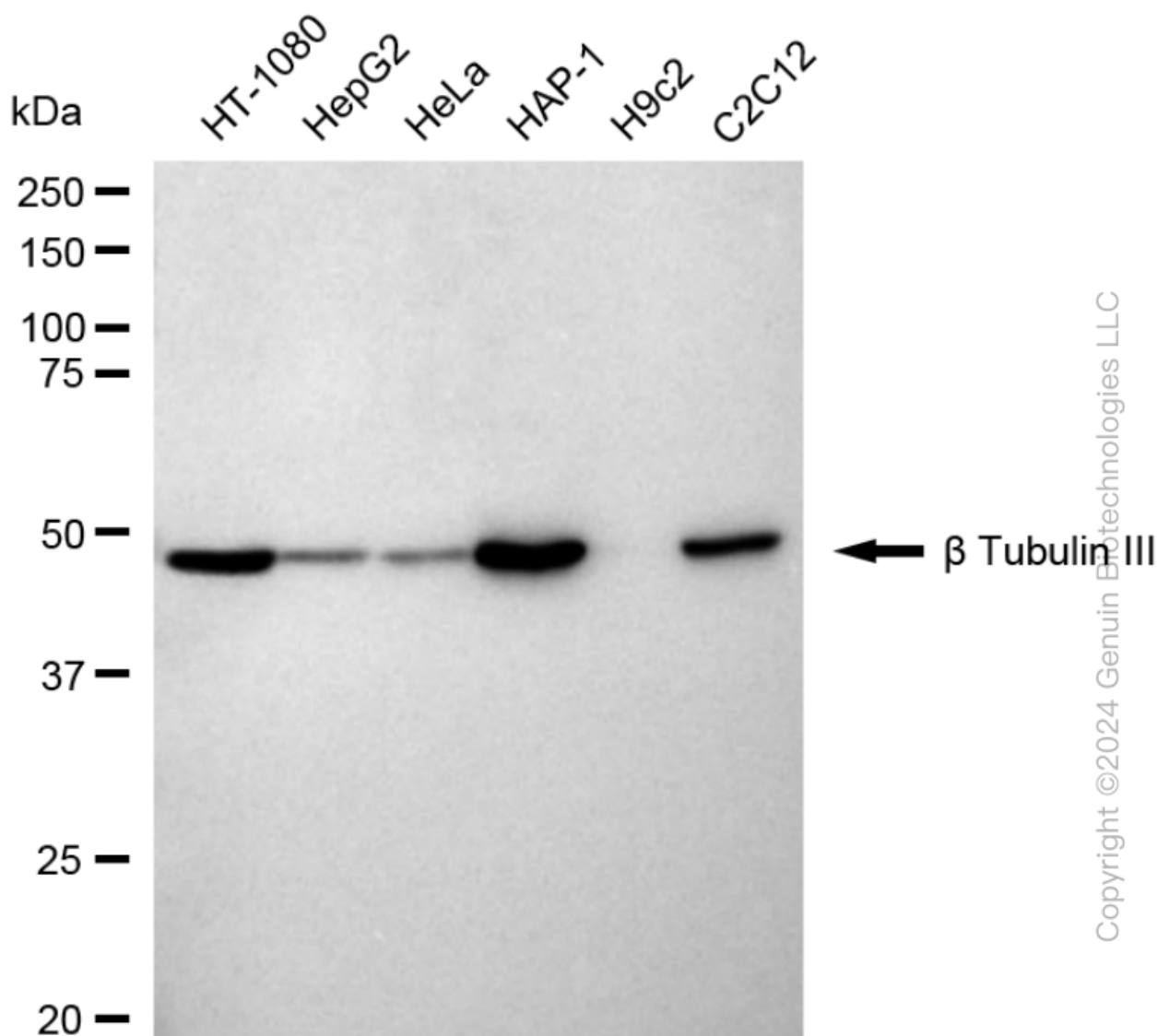


beta Tubulin III-Alexa Fluor[®] 647

Flow cytometric analysis of beta Tubulin III expression in HT-1080 cells using anti-beta Tubulin III antibody (Cat#62635, 1:2,000). Green, isotype control; red, beta Tubulin III.



Immunocytochemical staining of HT-1080 cells with anti-beta Tubulin III antibody (Cat#62635, 1:1,000) . Nuclei were stained blue with DAPI; beta Tubulin III was stained magenta with Alexa Fluor® 647. Images were taken using Leica stellaris 5. Protein abundance based on laser Intensity and smart gain: Medium. Scale bar, 20 μ m.

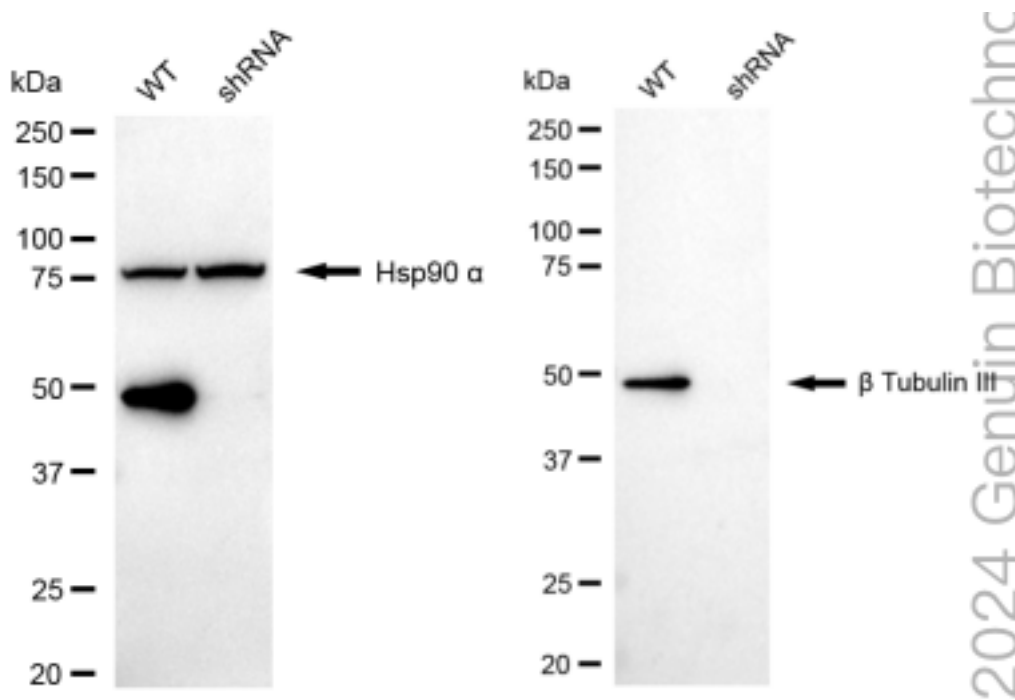


Copyright ©2024 Genuin Biotechnologies LLC

Western blotting analysis using anti-beta Tubulin III antibody (Cat#62635). Total cell lysates (30 μ g) from various cell lines were loaded and separated by SDS-PAGE. The blot was incubated with anti-beta Tubulin III antibody (Cat#62635, 1:10,000) and HRP-conjugated goat anti-rabbit secondary antibody (Cat#201, 1:20,000) respectively. Image was developed using FeQ™ ECL Substrate Kit (Cat#226).

KD-Validated Anti-Tubulin Beta 3 Class III Recombinant Rabbit Monoclonal Antibody

PAGE 5



Western blotting analysis using anti-beta Tubulin III antibody (Cat#62635). beta Tubulin III expression in wild type (WT) and beta Tubulin III shRNA knockdown (KD) HeLa cells with 20 μ g of total cell lysates. Hsp90 α serves as a loading control. The blot was incubated with anti-beta Tubulin III antibody (Cat#62635, 1:5,000) and HRP-conjugated goat anti-rabbit secondary antibody (Cat#201, 1:20,000) respectively. Image was developed using NaQ™ ECL Substrate Kit (Cat#716).

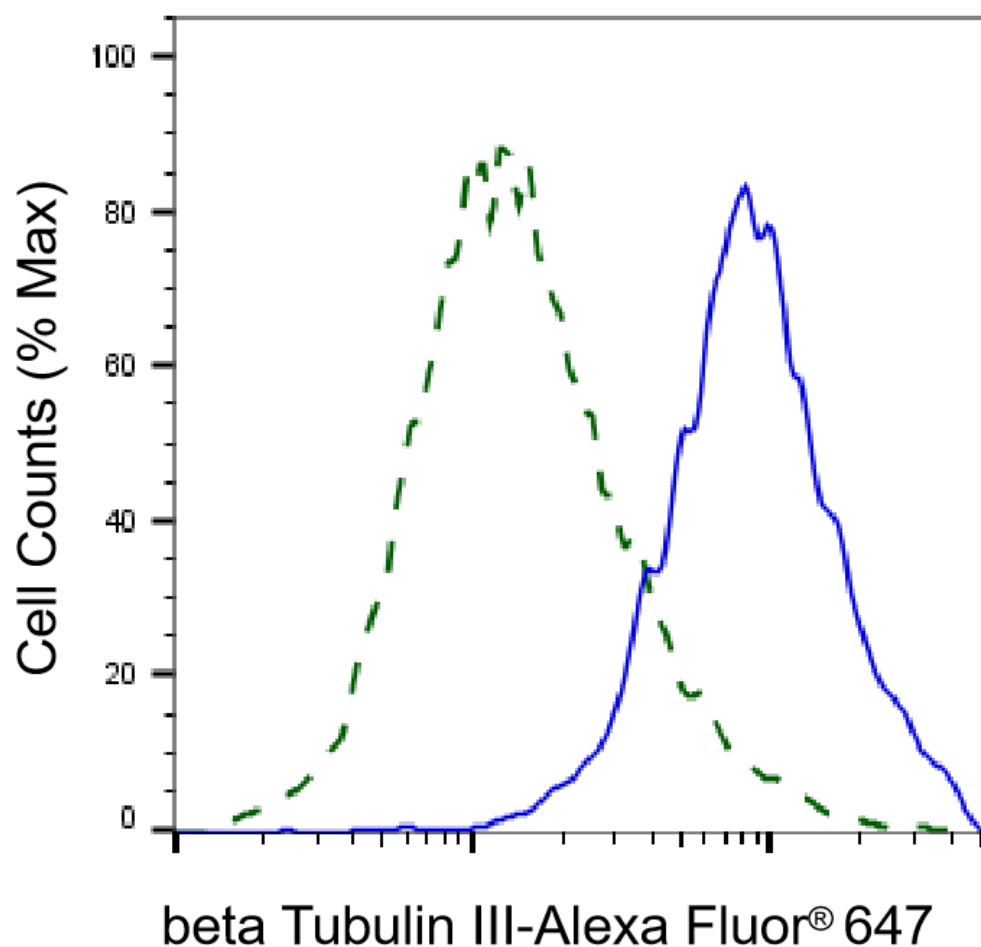
SUPPORT

SUPPORT@GENUINBIOTECH.COM
TEL: +1-540-855-7041

ORDERS

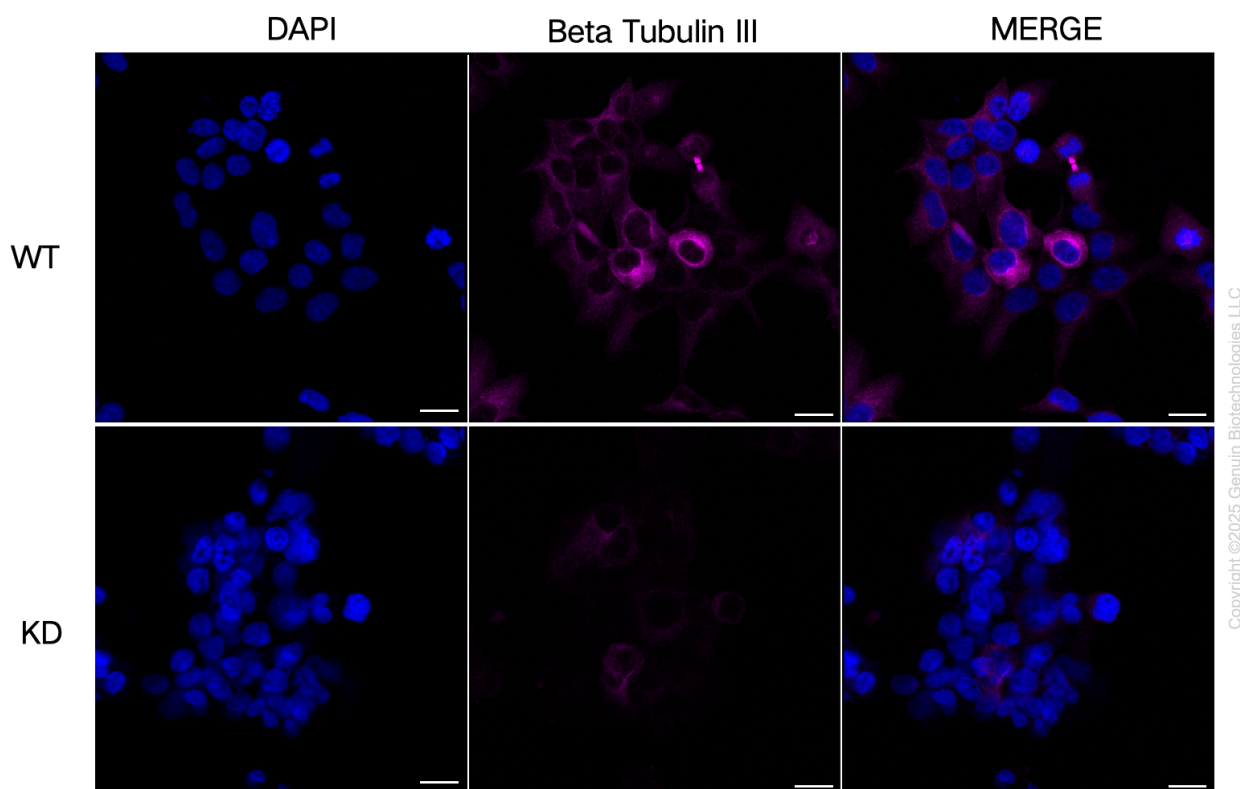
SALES@GENUINBIOTECH.COM
FAX: +1-540-855-7041

WWW.GENUINBIOTECH.COM



Copyright ©2025 Genuin Biotechnologies LLC

Validation of beta Tubulin III knockdown using flow cytometry. Wild-type(WT, Blue) and knockdown(KD, Green) HeLa cells were stained with anti-beta Tubulin III antibody (Cat#62635, 1:2,000) and analyzed using BD flow cytometer.



Immunocytochemical staining of HeLa cells using anti-Beta Tubulin III antibody (Cat#62635, 1:1,000), Top panel: wild-type (WT); Bottom panel: Beta Tubulin III shRNA knockdown (KD). Nuclei were stained blue with DAPI; Beta Tubulin III was stained magenta with Alexa Fluor® 647. Scale bar, 20 μ m.