

KD-Validated Anti-Vascular Endothelial Growth Factor D Recombinant Rabbit



Catalog #: 62636

Aliases

VEGFD; Vascular Endothelial Growth Factor D; VEGF-D; FIGF; C-Fos Induced Growth Factor (Vascular Endothelial Growth Factor D); C-Fos-Induced Growth Factor

Background

Gene Name: VEGFD

NCBI Gene Entry: [2277](#)

UniProt Entry: [O43915](#)

Application Information

Molecular Weight: Predicted, 40 kDa, observed, 37 kDa

Clonality: Rabbit monoclonal antibody

Clone ID: 24GB1750

Species Reactivity: Human, mouse, rat

Applications Tested: Western blotting (WB), flow cytometry (FCM), immunocytochemistry (IC)

Immunogen

A synthesized peptide derived from human beta VEGFD

Isotype

Rabbit IgG

Storage Buffer

Supplied in PBS (pH 7.4) containing 50% glycerol, and 0.02% sodium azide.

Storage

Store at -20 °C for one year.

Recommended Dilutions

Western Blotting (WB): 1:1,000-1:5,000

Flow Cytometry (FCM): 1:2,000

Immunocytochemistry (IC): 1:100-1:1,000

Note: This product is for research use only.

Validation Data

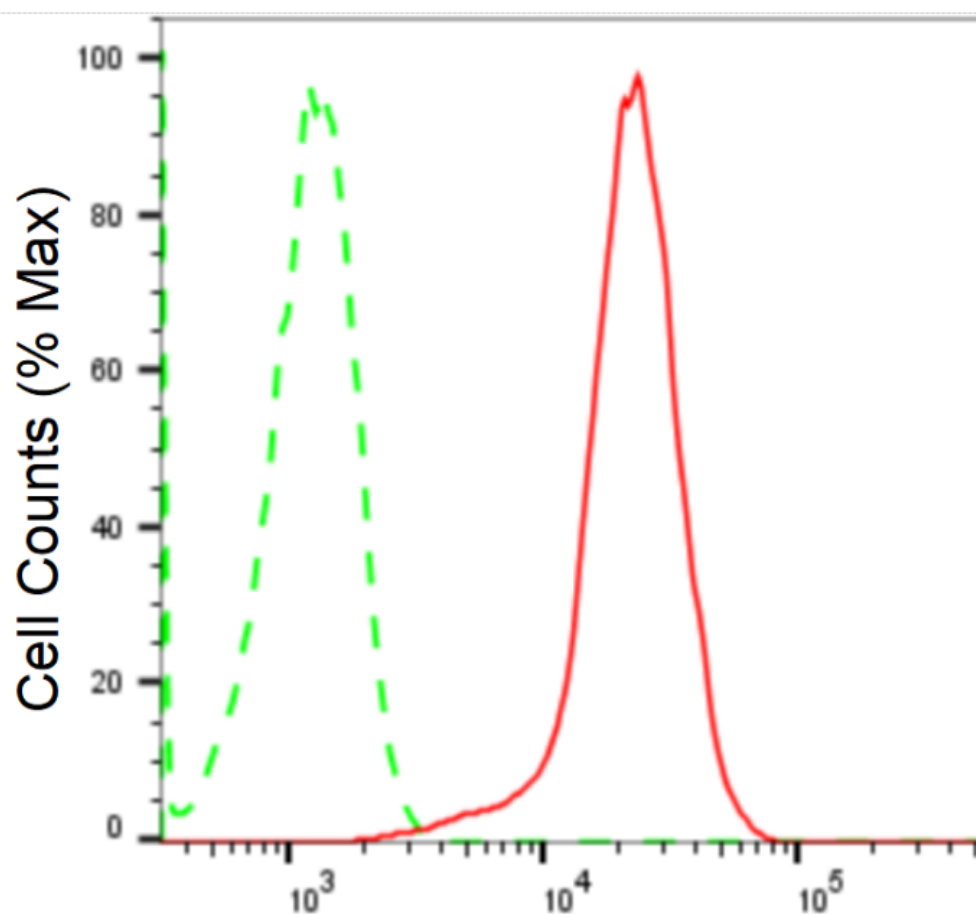
SUPPORT

SUPPORT@GENUINBIOTECH.COM
TEL: +1-540-855-7041

ORDERS

SALES@GENUINBIOTECH.COM
FAX: +1-540-855-7041

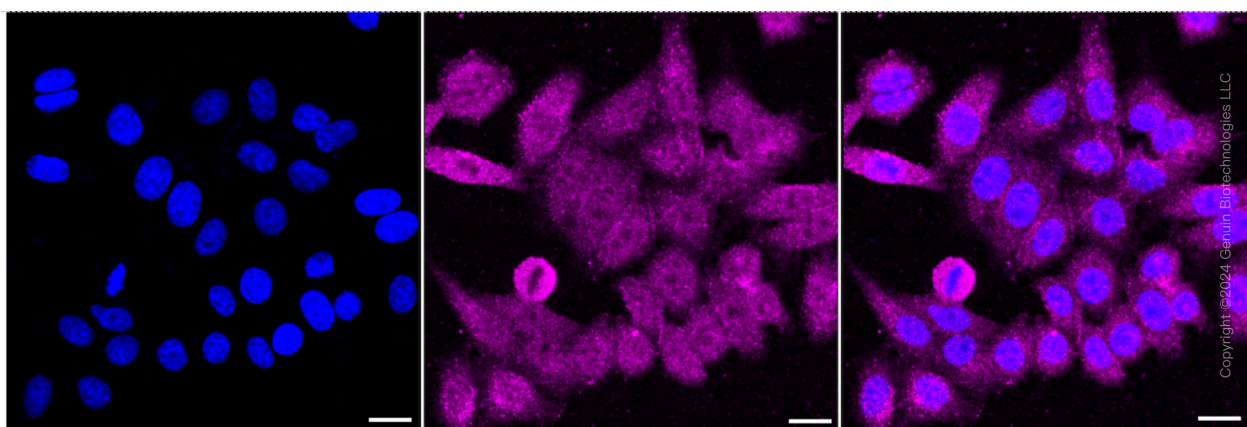
WWW.GENUINBIOTECH.COM



Copyright ©2024 Genuin Biotechnologies LLC

Vascular endothelial growth factor D-Alexa Fluor® 647

Flow cytometric analysis of Vascular endothelial growth factor D expression in HepG2 cells using anti-Vascular endothelial growth factor D antibody (Cat#62636, 1:2,000). Green, isotype control; red, Vascular endothelial growth factor D.



Copyright ©2024 Genuin Biotechnologies LLC

Immunocytochemical staining of HepG2 cells with anti-Vascular endothelial growth factor D

SUPPORT

SUPPORT@GENUINBIOTECH.COM
TEL: +1-540-855-7041

ORDERS

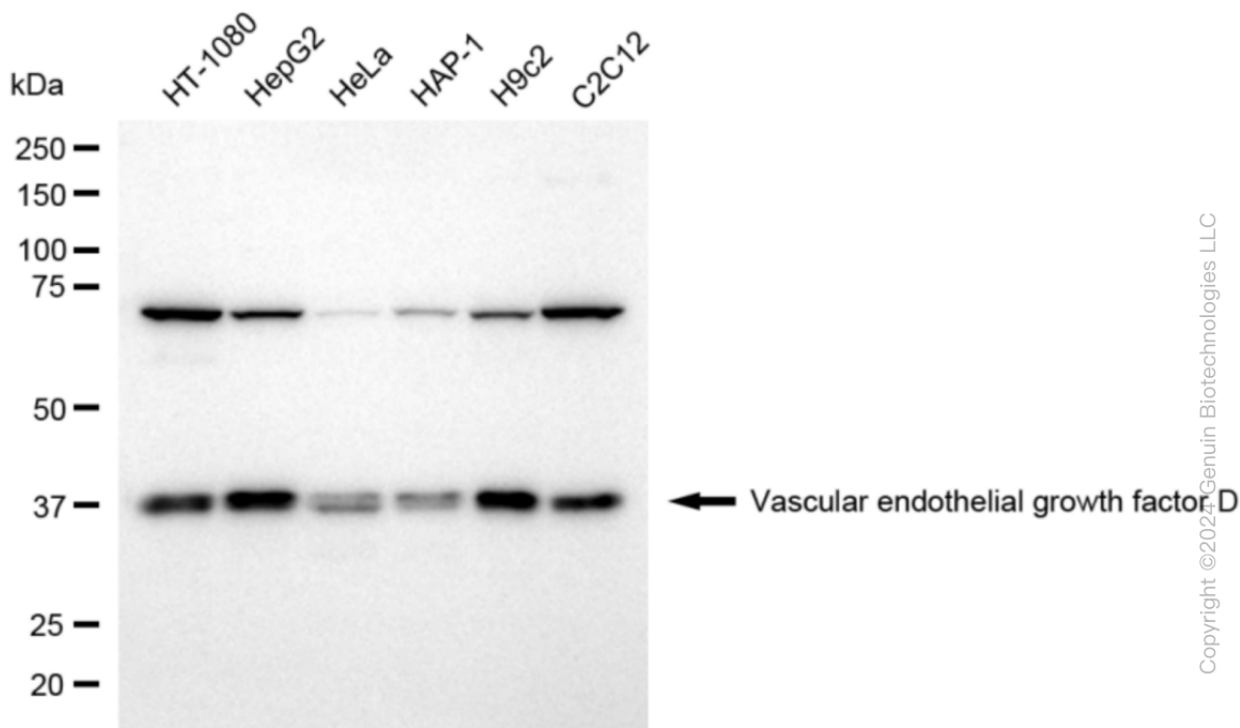
SALES@GENUINBIOTECH.COM
FAX: +1-540-855-7041

WWW.GENUINBIOTECH.COM

KD-Validated Anti-Vascular Endothelial Growth Factor D Recombinant Rabbit

PAGE 3

antibody (Cat#62636, 1:1,000). Nuclei were stained blue with DAPI; Vascular endothelial growth factor D was stained magenta with Alexa Fluor® 647. Images were taken using Leica stellaris 5. Protein abundance based on laser Intensity and smart gain: Medium. Scale bar: 20 µm.



Western blotting analysis using anti-Vascular endothelial growth factor D antibody (Cat#62636). Total cell lysates (30 µg) from various cell lines were loaded and separated by SDS-PAGE. The blot was incubated with anti-Vascular endothelial growth factor D antibody (Cat#62636, 1:5,000) and HRP-conjugated goat anti-rabbit secondary antibody (Cat#201, 1:20,000) respectively. Image was developed using FeQ™ ECL Substrate Kit (Cat#226).

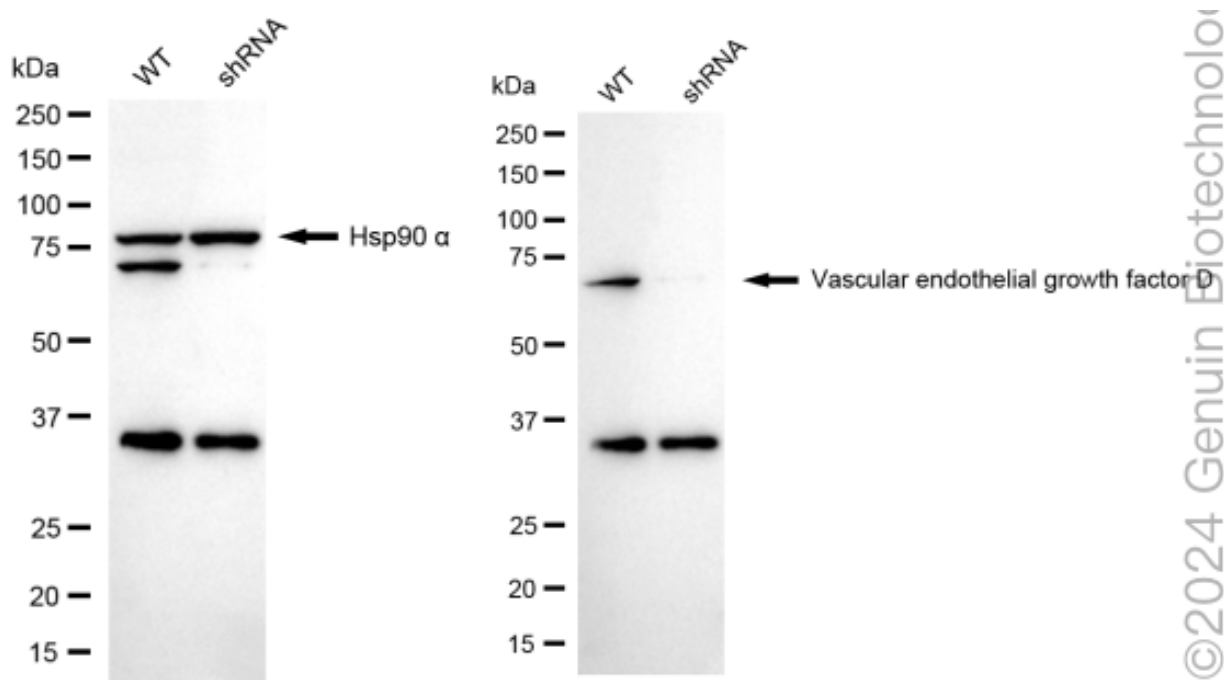
SUPPORT

SUPPORT@GENUINBIOTECH.COM
TEL: +1-540-855-7041

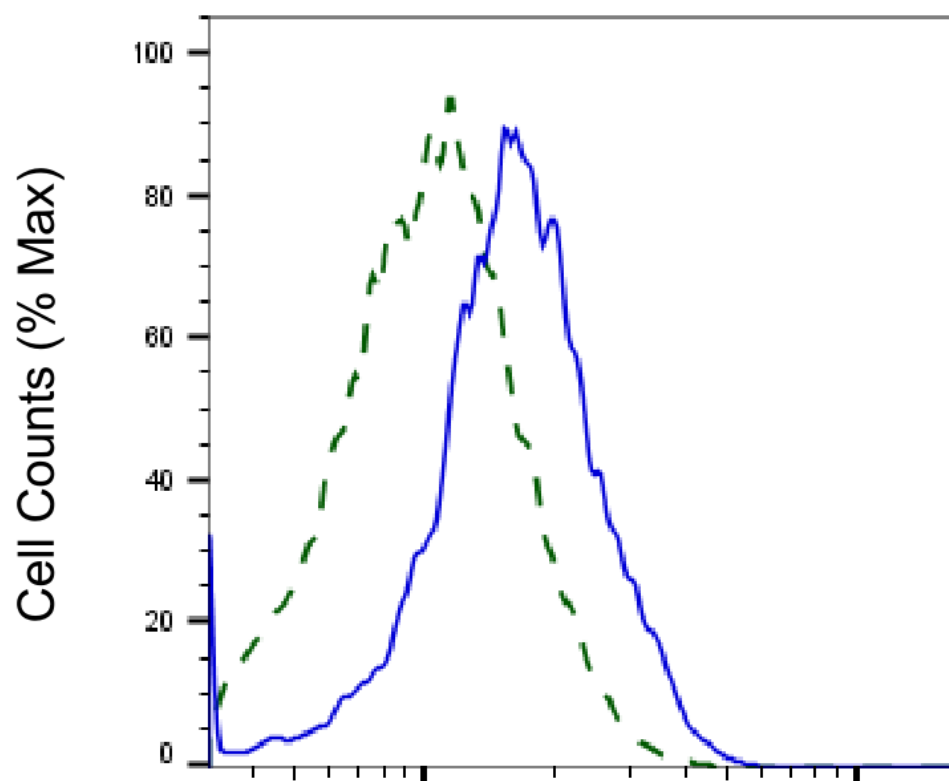
ORDERS

SALES@GENUINBIOTECH.COM
FAX: +1-540-855-7041

WWW.GENUINBIOTECH.COM



Western blotting analysis using anti-Vascular endothelial growth factor D antibody (Cat#62636). Total cell lysates (30 µg) from various cell lines were loaded and separated by SDS-PAGE. The blot was incubated with anti-Vascular endothelial growth factor D antibody (Cat#62636, 1:5,000) and HRP-conjugated goat anti-rabbit secondary antibody (Cat#201, 1:20,000) respectively. Image was developed using FeQ™ ECL Substrate Kit (Cat#226).



Copyright ©2025 Genuin Biotechnologies LLC

Vascular endothelial growth factor D-Alexa Fluor® 647

Validation of Vascular endothelial growth factor D knockdown using flow cytometry. Wild-type(WT, Blue) and knockdown(KD, Green) HeLa cells were stained with anti-Vascular endothelial growth factor D antibody (Cat#62636, 1:2,000) and analyzed using BD flow cytometer.