

KD-Validated Anti-VPS28 Subunit Of ESCRT-I Recombinant Rabbit Monoclonal Antibody



Catalog #: 62637

Aliases

VPS28; VPS28 Subunit Of ESCRT-I ; Vacuolar Protein Sorting-Associated Protein 28 Homolog; ESCRT-I Complex Subunit VPS28; VPS28, ESCRT-I Subunit; Vacuolar Protein Sorting 28 Homolog (S. Cerevisiae); Vacuolar Protein Sorting 28-Like Protein; Yeast Class E Protein Vps28p Homolog; Vacuolar Protein Sorting 28 (Yeast); Vacuolar Protein Sorting 28 Homolog; H-Vps28

Background

Gene Name: VPS28

NCBI Gene Entry: [51160](#)

UniProt Entry: [Q9UK41](#)

Application Information

Molecular Weight: Predicted, 25 kDa, observed, 25 kDa

Clonality: Rabbit monoclonal antibody

Clone ID: 24GB1755

Species Reactivity: Human, mouse, rat

Applications Tested: Western blotting (WB), flow cytometry (FCM), immunocytochemistry (IC)

Immunogen

A synthesized peptide derived from human beta VPS28

Isotype

Rabbit IgG

Storage Buffer

Supplied in PBS (pH 7.4) containing 50% glycerol, and 0.02% sodium azide.

Storage

Store at -20 °C for one year.

Recommended Dilutions

Western Blotting (WB): 1:1,000-1:5,000

Flow Cytometry (FCM): 1:2,000

Immunocytochemistry (IC): 1:100-1:1,000

SUPPORT

SUPPORT@GENUINBIOTECH.COM
TEL: +1-540-855-7041

ORDERS

SALES@GENUINBIOTECH.COM
FAX: +1-540-855-7041

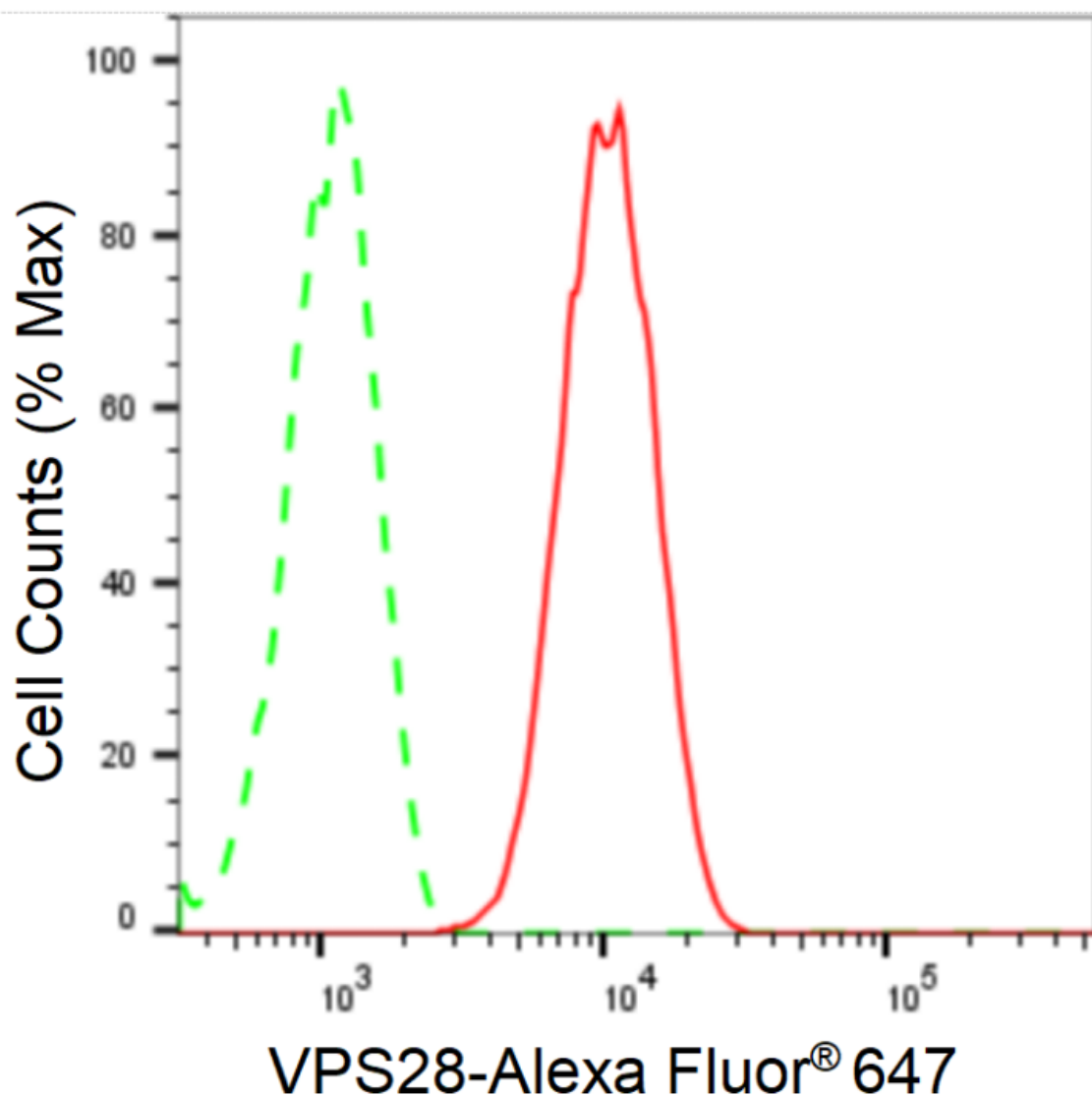
WWW.GENUINBIOTECH.COM

KD-Validated Anti-VPS28 Subunit Of ESCRT-I Recombinant Rabbit Monoclonal Antibody

PAGE 2

Note: This product is for research use only.

Validation Data



Copyright ©2024 Genuin Biotechnologies LLC

Flow cytometric analysis of VPS28 expression in C2C12 cells using anti-VPS28 antibody (Cat#62637, 1:2,000). Green, isotype control; red, VPS28.

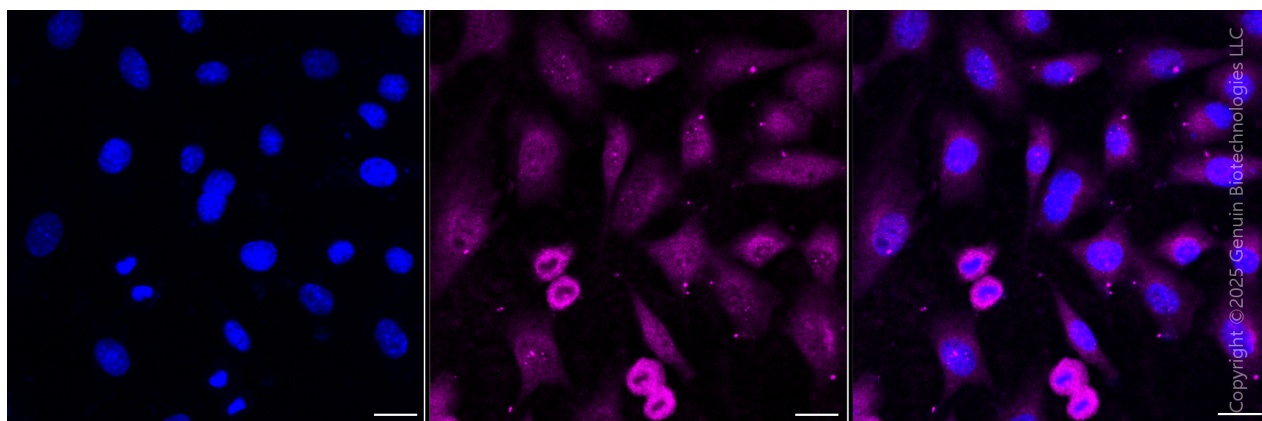
SUPPORT

SUPPORT@GENUINBIOTECH.COM
TEL: +1-540-855-7041

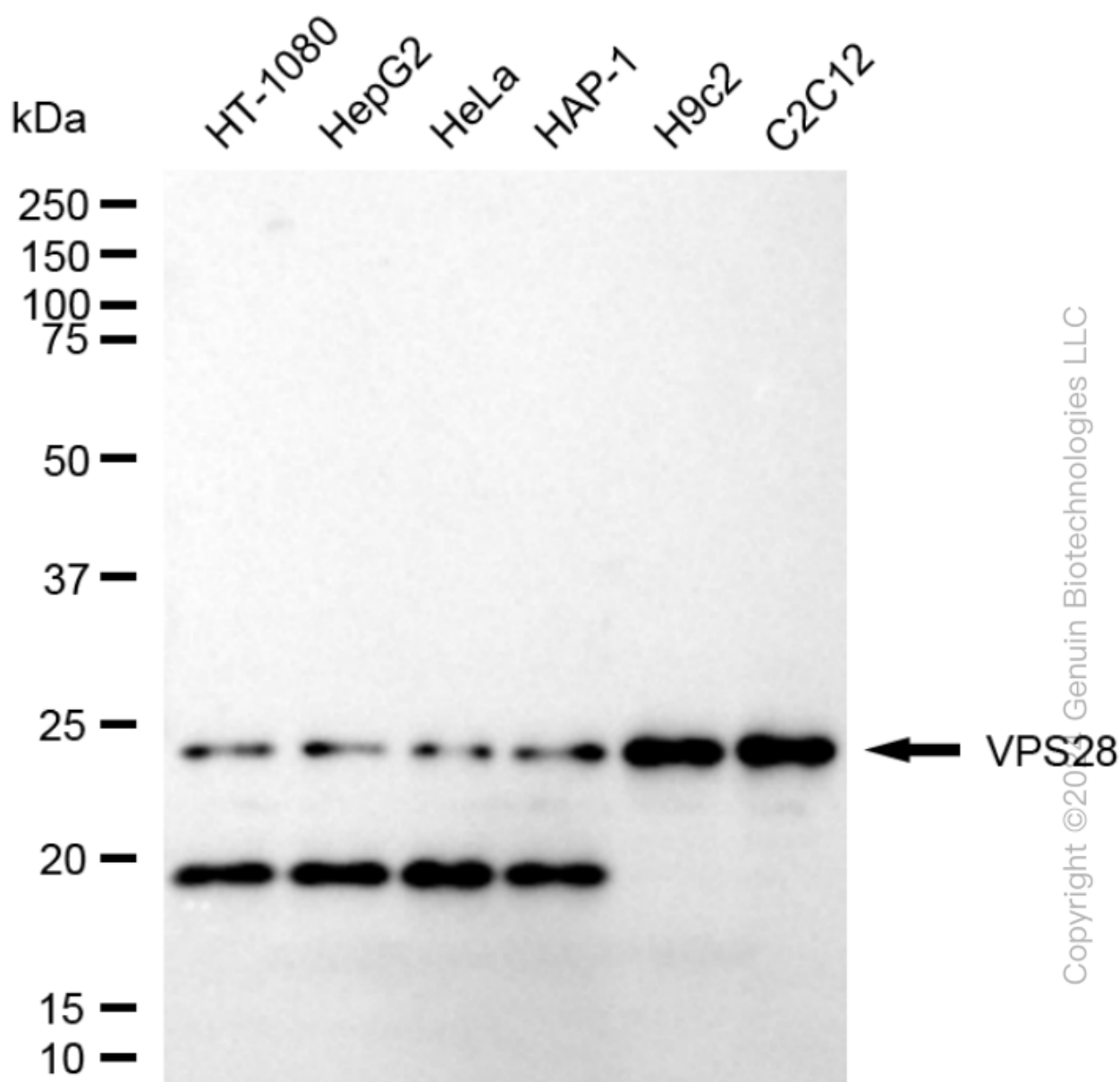
ORDERS

SALES@GENUINBIOTECH.COM
FAX: +1-540-855-7041

WWW.GENUINBIOTECH.COM



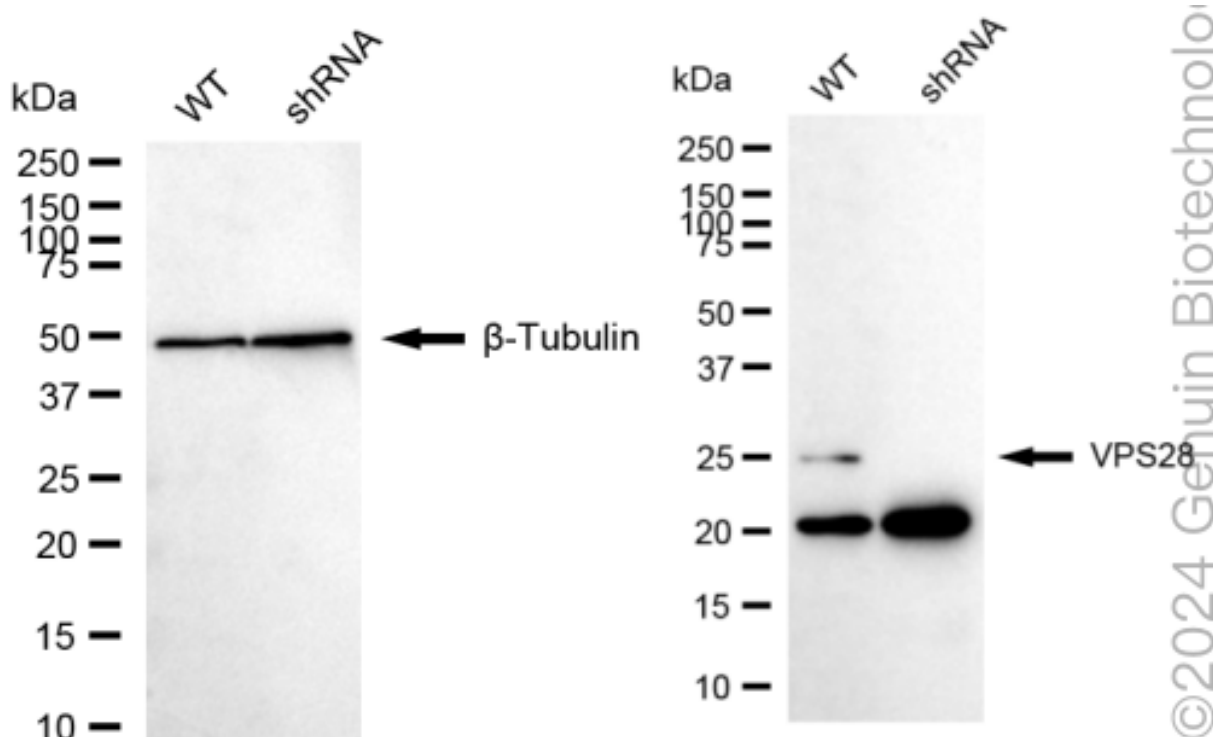
Immunocytochemical staining of C2C12 cells with anti-VPS28 antibody (Cat#62637, 1:1,000) . Nuclei were stained blue with DAPI; VPS28 was stained magenta with Alexa Fluor® 647. Images were taken using Leica stellaris 5. Protein abundance based on laser Intensity and Smart Gain□ Medium. Scale bar, 20 μ m.



Western blotting analysis using anti-VPS28 antibody (Cat#62637). Total cell lysates (30 µg) from various cell lines were loaded and separated by SDS-PAGE. The blot was incubated with anti-VPS28 antibody (Cat#62637, 1:5,000) and HRP-conjugated goat anti-rabbit secondary antibody (Cat#201, 1:20,000) respectively. Image was developed using FeQ™ ECL Substrate Kit (Cat#226).

KD-Validated Anti-VPS28 Subunit Of ESCRT-I Recombinant Rabbit Monoclonal Antibody

PAGE 5



Western blotting analysis using anti-VPS28 antibody (Cat#62637). VPS28 expression in wild type (WT) and VPS28 shRNA knockdown (KD) HeLa cells with 20 µg of total cell lysates. β-Tubulin serves as a loading control. The blot was incubated with anti-VPS28 antibody (Cat#62637, 1:5,000) and HRP-conjugated goat anti-rabbit secondary antibody (Cat#201, 1:20,000) respectively. Image was developed using NaQ™ ECL Substrate Kit (Cat#716).

SUPPORT

SUPPORT@GENUINBIOTECH.COM
TEL: +1-540-855-7041

ORDERS

SALES@GENUINBIOTECH.COM
FAX: +1-540-855-7041

WWW.GENUINBIOTECH.COM