

# KD-Validated Anti-Ubiquitination Factor E4B Recombinant Rabbit Monoclonal Antibody



**Catalog #: 62638**

## Aliases

UBE4B; Ubiquitination Factor E4B; UFD2; KIAA0684; UBOX3; E4; Ubiquitination Factor E4B (UFD2 Homolog, Yeast); RING-Type E3 Ubiquitin Transferase E4 B; Ubiquitin Conjugation Factor E4 B; HDNB1; Ubiquitination Factor E4B (Homologous To Yeast UFD2); Homozygously Deleted In Neuroblastoma-1; Homozygously Deleted In Neuroblastoma 1; Ubiquitin-Fusion Degradation Protein 2; Ubiquitin Fusion Degradation Protein 2; Homologous To Yeast UFD2; EC 2.3.2.27; UFD2A

## Background

Gene Name: UBE4B

NCBI Gene Entry: [10277](#)

UniProt Entry: [O95155](#)

## Application Information

Molecular Weight: Predicted, 146 kDa, observed, 130 kDa

Clonality: Rabbit monoclonal antibody

Clone ID: 24GB1765

Species Reactivity: Human, mouse, rat

Applications Tested: Western blotting (WB), flow cytometry (FCM), immunocytochemistry (IC)

## Immunogen

A synthesized peptide derived from human UBE4B

## Isotype

Rabbit IgG

## Storage Buffer

Supplied in PBS (pH 7.4) containing 50% glycerol, and 0.02% sodium azide.

## Storage

Store at -20 °C for one year.

## Recommended Dilutions

Western Blotting (WB): 1:1,000-1:5,000

Flow Cytometry (FCM): 1:2,000

Immunocytochemistry (IC): 1:100-1:1,000

---

### SUPPORT

SUPPORT@GENUINBIOTECH.COM  
TEL: +1-540-855-7041

### ORDERS

SALES@GENUINBIOTECH.COM  
FAX: +1-540-855-7041

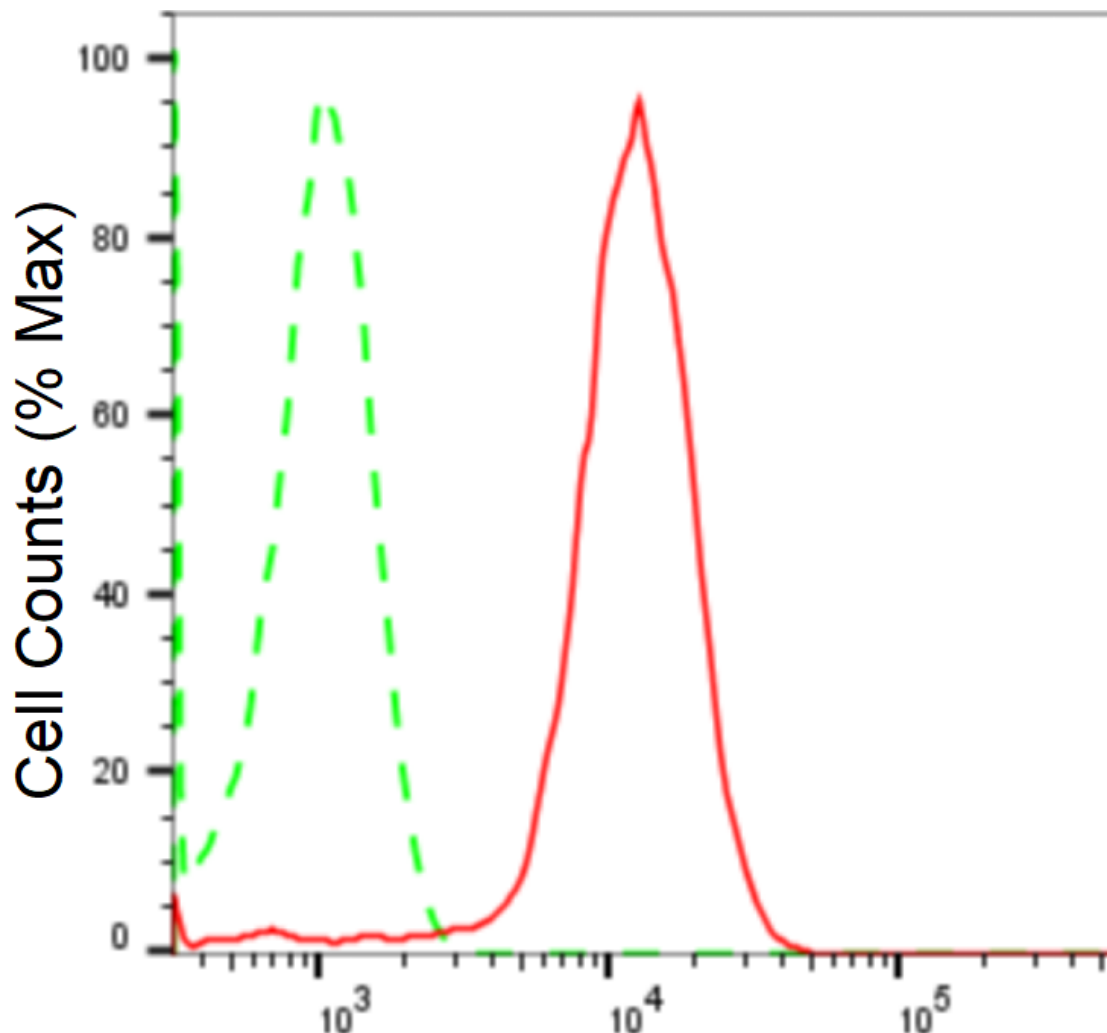
[WWW.GENUINBIOTECH.COM](http://WWW.GENUINBIOTECH.COM)

## KD-Validated Anti-Ubiquitination Factor E4B Recombinant Rabbit Monoclonal Antibody

PAGE 2

**Note:** This product is for research use only.

### Validation Data



Copyright ©2024 Genuin Biotechnologies LLC

## Ubiquitination factor E4 B-Alexa Fluor® 647

Flow cytometric analysis of Ubiquitination factor E4 B expression in HepG2 cells using anti-Ubiquitination factor E4 B antibody (Cat#62638, 1:2,000). Green, isotype control; red, Ubiquitination factor E4 B.

#### SUPPORT

SUPPORT@GENUINBIOTECH.COM  
TEL: +1-540-855-7041

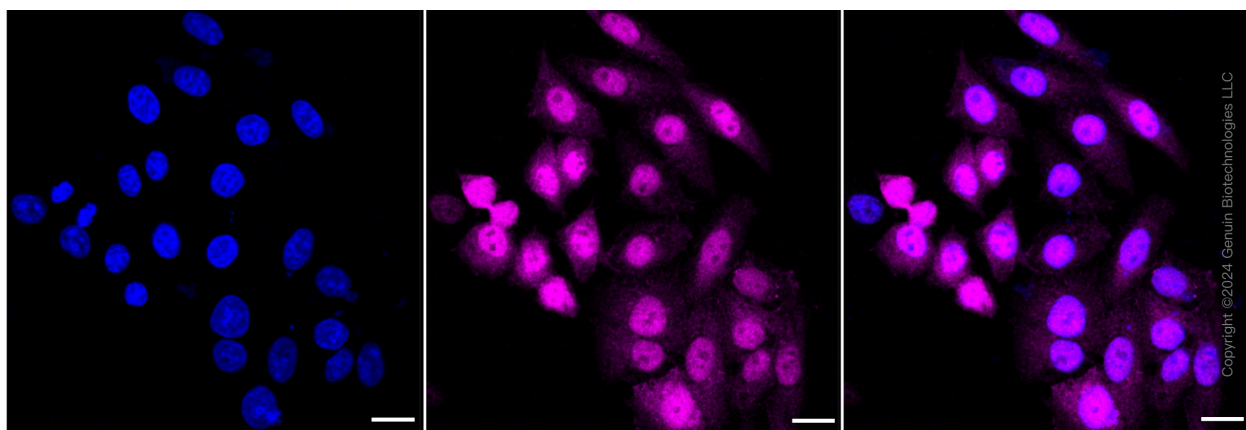
#### ORDERS

SALES@GENUINBIOTECH.COM  
FAX: +1-540-855-7041

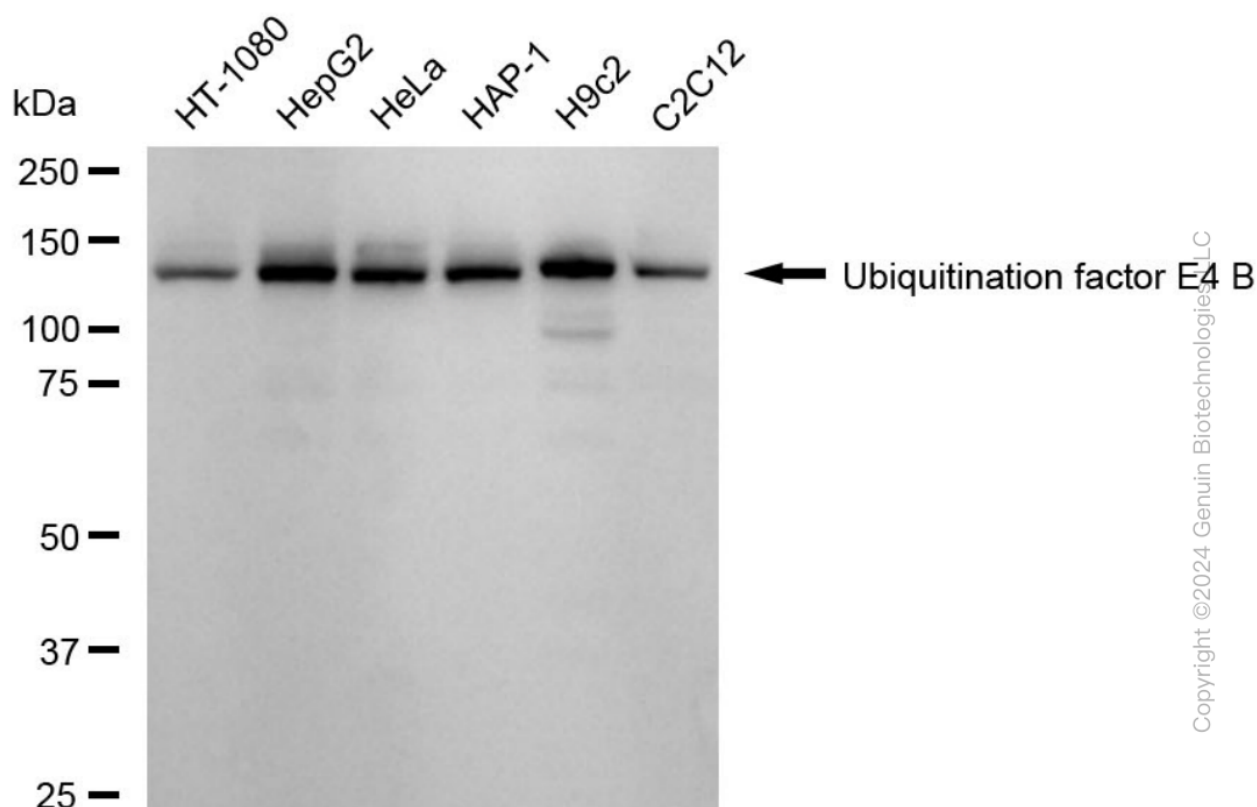
[WWW.GENUINBIOTECH.COM](http://WWW.GENUINBIOTECH.COM)

## KD-Validated Anti-Ubiquitination Factor E4B Recombinant Rabbit Monoclonal Antibody

PAGE 3



Immunocytochemical staining of HepG2 cells with anti-Ubiquitination factor E4 B antibody (Cat#62638, 1:1,000). Nuclei were stained blue with DAPI; Ubiquitination factor E4 B was stained magenta with Alexa Fluor® 647. Images were taken using Leica stellaris 5. Protein abundance based on laser Intensity and smart gain: Medium. Scale bar: 20  $\mu$ m.



Western blotting analysis using anti-Ubiquitination factor E4 B antibody (Cat#62638). Total cell lysates (30  $\mu$ g) from various cell lines were loaded and separated by SDS-PAGE. The blot was incubated with anti-Ubiquitination factor E4 B antibody (Cat#62638, 1:5,000) and HRP-conjugated goat anti-rabbit secondary antibody (Cat#201, 1:20,000) respectively. Image was developed using FeQ™ ECL Substrate Kit (Cat#226).

### SUPPORT

SUPPORT@GENUINBIOTECH.COM  
TEL: +1-540-855-7041

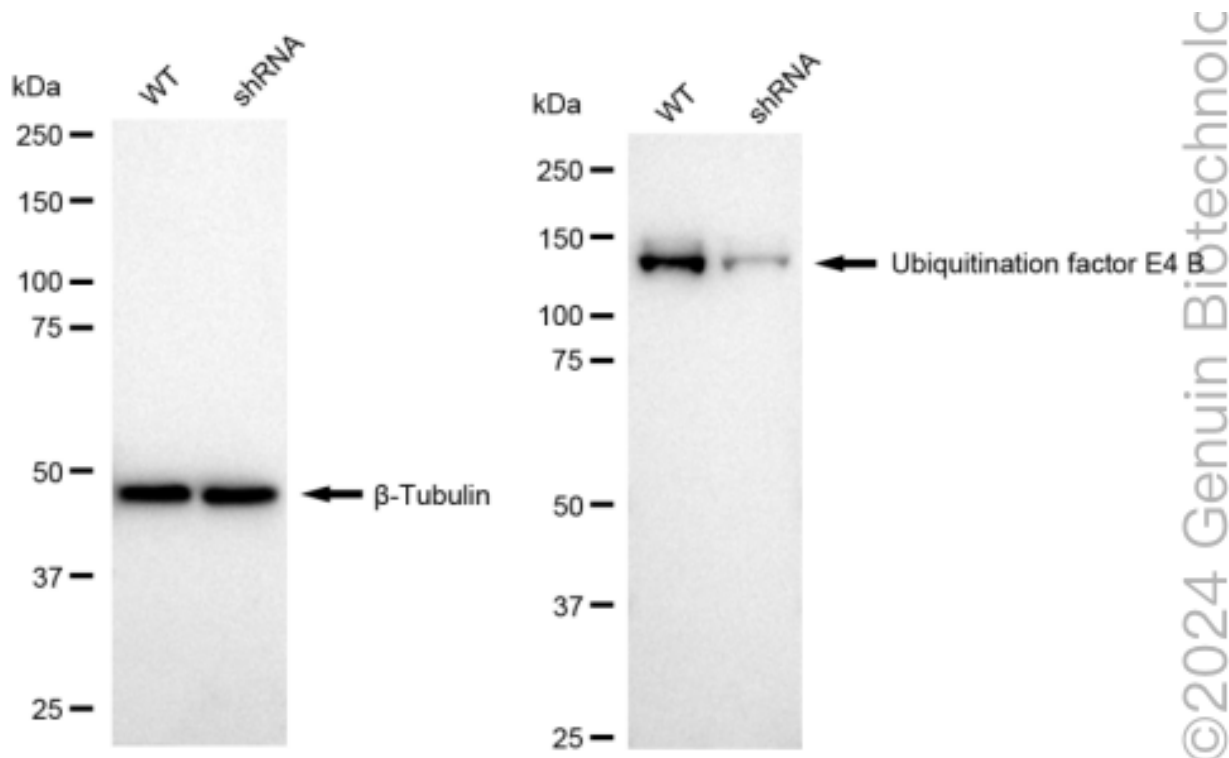
### ORDERS

SALES@GENUINBIOTECH.COM  
FAX: +1-540-855-7041

[WWW.GENUINBIOTECH.COM](http://WWW.GENUINBIOTECH.COM)

## KD-Validated Anti-Ubiquitination Factor E4B Recombinant Rabbit Monoclonal Antibody

PAGE 4



Western blotting analysis using anti-Ubiquitination factor E4 B antibody (Cat#62638). Ubiquitination factor E4 B expression in wild type (WT) and Ubiquitination factor E4 B shRNA knockdown (KD) HeLa cells with 20  $\mu$ g of total cell lysates.  $\beta$ -Tubulin serves as a loading control. The blot was incubated with anti-Ubiquitination factor E4 B antibody (Cat#62638, 1:5,000) and HRP-conjugated goat anti-rabbit secondary antibody (Cat#201, 1:20,000) respectively. Image was developed using NaQ<sup>TM</sup> ECL Substrate Kit (Cat#716).

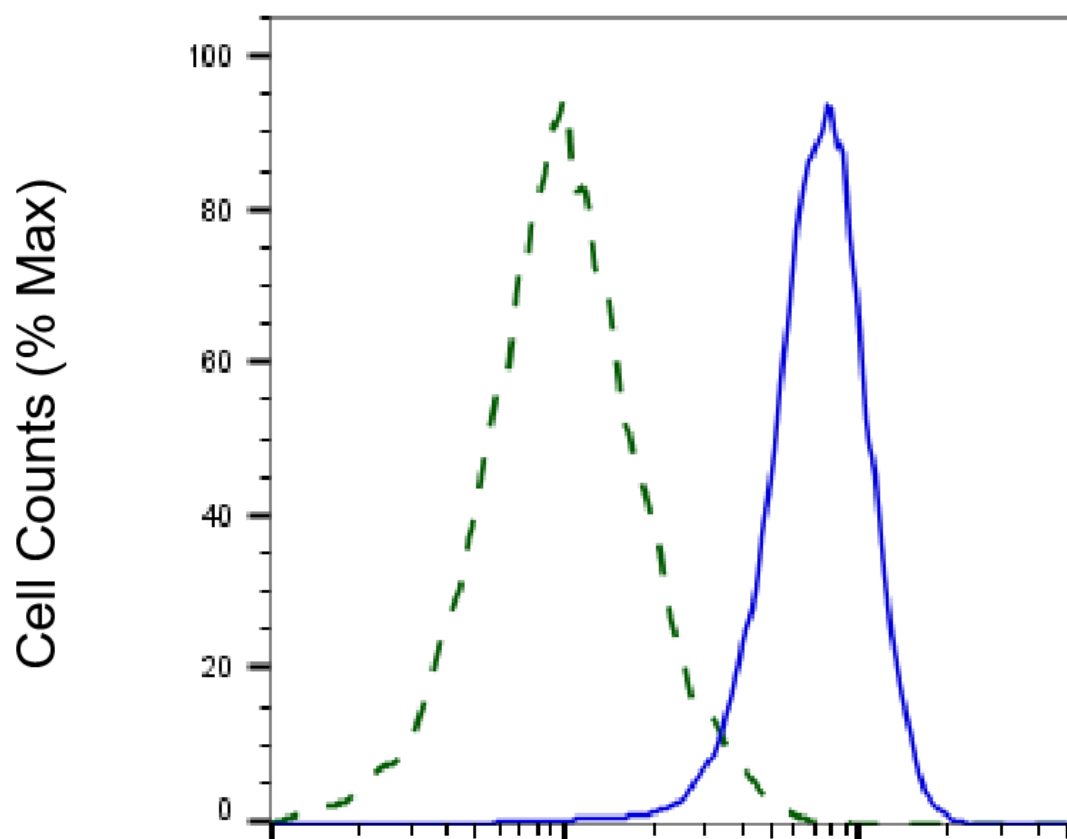
### SUPPORT

SUPPORT@GENUINBIOTECH.COM  
TEL: +1-540-855-7041

### ORDERS

SALES@GENUINBIOTECH.COM  
FAX: +1-540-855-7041

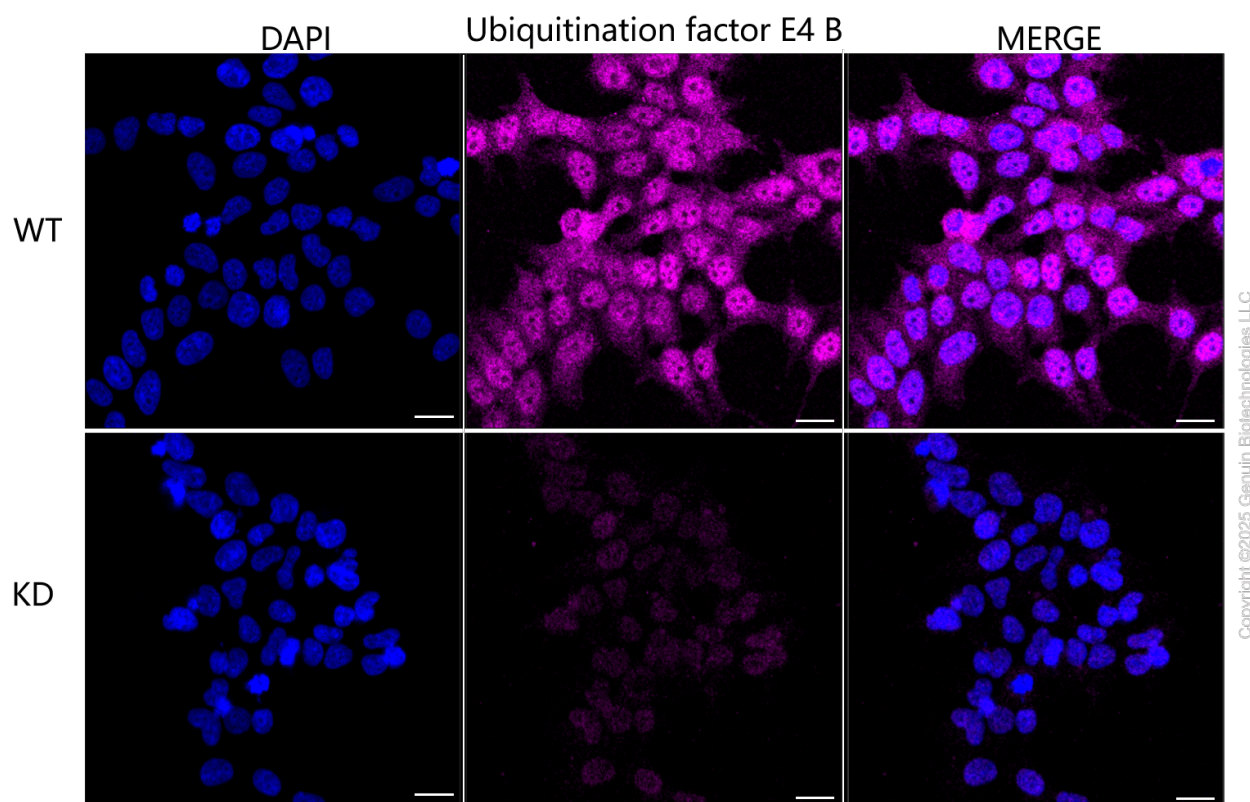
WWW.GENUINBIOTECH.COM



Copyright ©2025 Genuin Biotechnologies LLC

## Ubiquitination factor E4 B-Alexa Fluor® 647

Validation of Ubiquitination factor E4 B knockdown using flow cytometry. Wild-type(WT, Blue) and knockdown(KD, Green) HeLa cells were stained with anti-Ubiquitination factor E4 B antibody (Cat#62638, 1:2,000) and analyzed using BD flow cytometer.



Immunocytochemical staining of HeLa cells using anti-Ubiquitination factor E4 B antibody (Cat#62638, 1:1,000), Top panel: wild-type (WT); Bottom panel: Ubiquitination factor E4 B shRNA knockdown (KD). Nuclei were stained blue with DAPI; Ubiquitination factor E4 B was stained magenta with Alexa Fluor® 647. Scale bar, 20  $\mu$ m.