

# KD-Validated Anti-Ubiquitination Factor E4A Recombinant Rabbit Monoclonal Antibody



**Catalog #: 62639**

## Aliases

UBE4A; Ubiquitination Factor E4A; KIAA0126; UBOX2; UFD2; E4; Ubiquitination Factor E4A (UFD2 Homolog, Yeast); RING-Type E3 Ubiquitin Transferase E4 A; Ubiquitin Conjugation Factor E4 A; Ubiquitination Factor E4A (Homologous To Yeast UFD2); EC 2.3.2.27; NEDHMS

## Background

Gene Name: UBE4A

NCBI Gene Entry: [9354](#)

UniProt Entry: [Q14139](#)

## Application Information

Molecular Weight: Predicted, 123 kDa, observed, 123 kDa

Clonality: Rabbit monoclonal antibody

Clone ID: 24GB1785

Species Reactivity: Human, mouse, rat

Applications Tested: Western blotting (WB), flow cytometry (FCM), immunocytochemistry (IC)

## Immunogen

A synthesized peptide derived from human UBE4A

## Isotype

Rabbit IgG

## Storage Buffer

Supplied in PBS (pH 7.4) containing 50% glycerol, and 0.02% sodium azide.

## Storage

Store at -20 °C for one year.

## Recommended Dilutions

Western Blotting (WB): 1:1,000-1:5,000

Flow Cytometry (FCM): 1:2,000

Immunocytochemistry (IC): 1:100-1:1,000

**Note:** This product is for research use only.

---

### SUPPORT

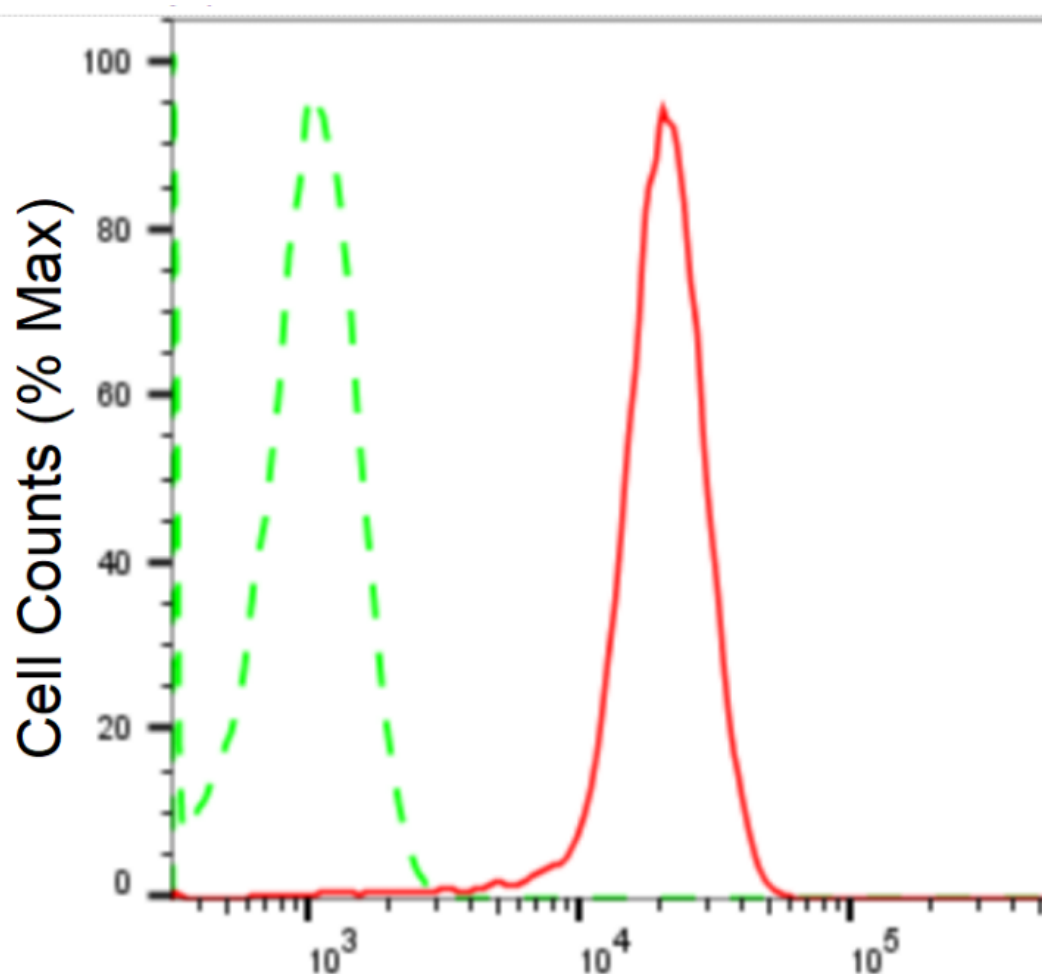
SUPPORT@GENUINBIOTECH.COM  
TEL: +1-540-855-7041

### ORDERS

SALES@GENUINBIOTECH.COM  
FAX: +1-540-855-7041

[WWW.GENUINBIOTECH.COM](http://WWW.GENUINBIOTECH.COM)

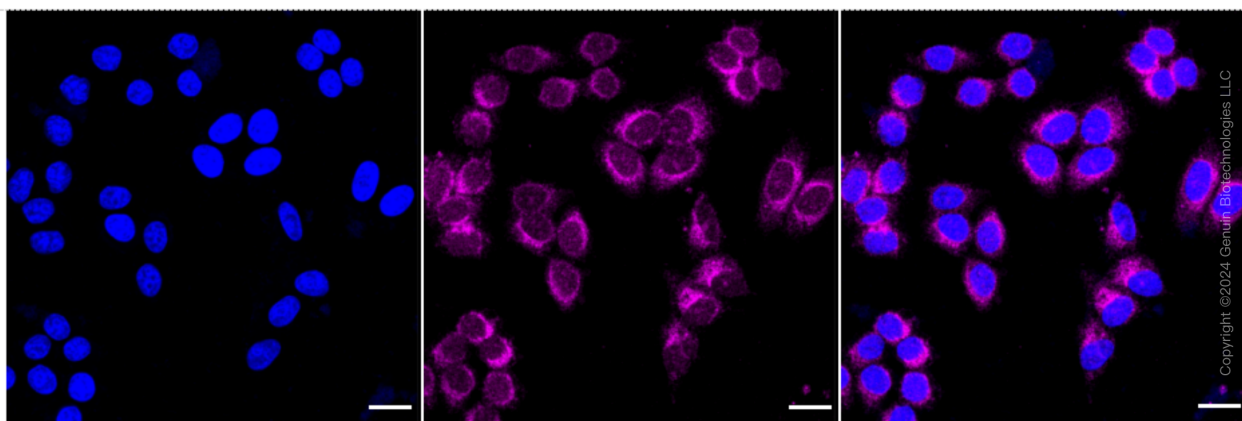
**Validation Data**



Copyright ©2024 Genuin Biotechnologies LLC

**ubiquitination factor E4 A-Alexa Fluor® 647**

Flow cytometric analysis of ubiquitination factor E4 A expression in HepG2 cells using anti-ubiquitination factor E4 A antibody (Cat#62639, 1:2,000). Green, isotype control; red, ubiquitination factor E4 A.



Copyright ©2024 Genuin Biotechnologies LLC

**SUPPORT**

SUPPORT@GENUINBIOTECH.COM  
TEL: +1-540-855-7041

**ORDERS**

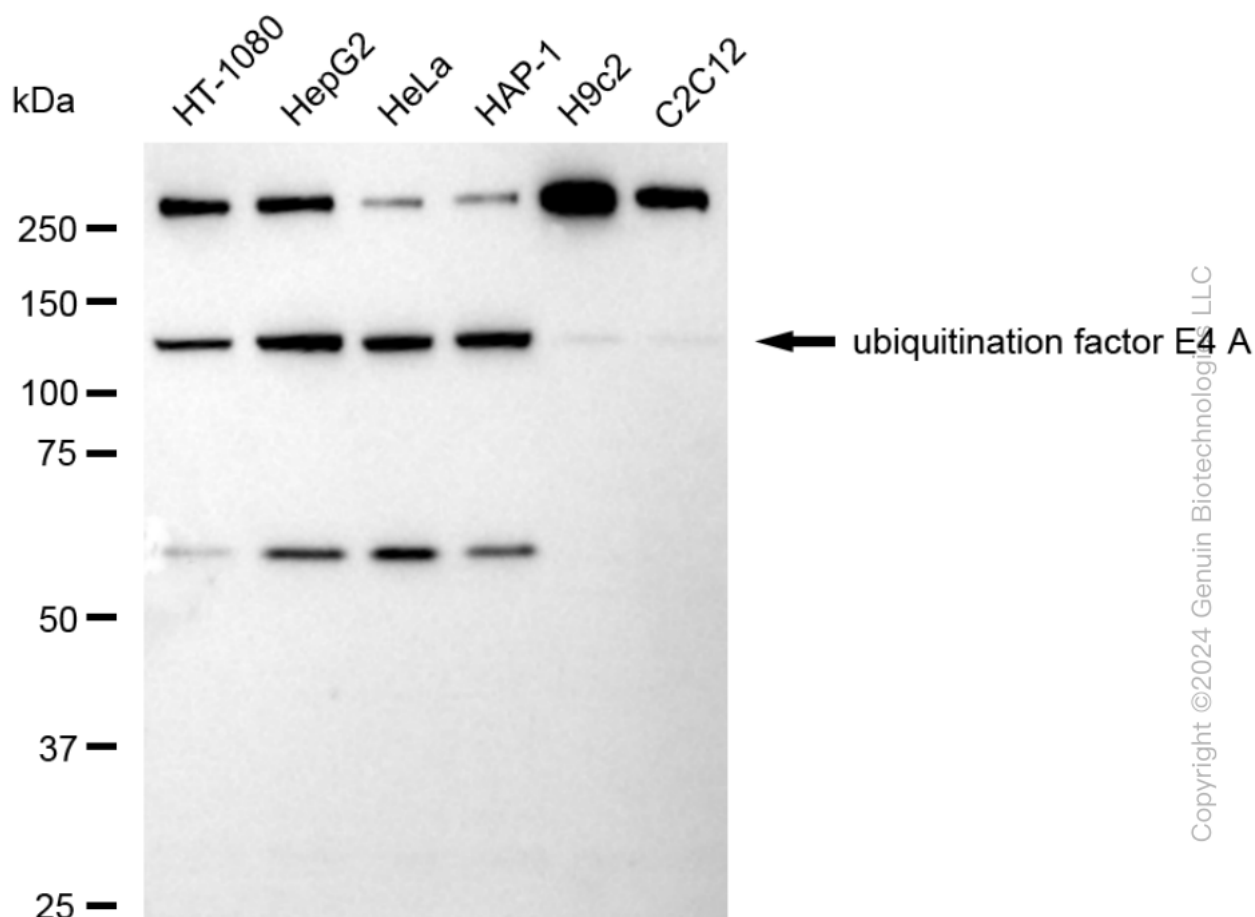
SALES@GENUINBIOTECH.COM  
FAX: +1-540-855-7041

**WWW.GENUINBIOTECH.COM**

## KD-Validated Anti-Ubiquitination Factor E4A Recombinant Rabbit Monoclonal Antibody

PAGE 3

Immunocytochemical staining of HepG2 cells with anti-ubiquitination factor E4 A antibody (Cat#62639, 1:1,000). Nuclei were stained blue with DAPI; ubiquitination factor E4 A was stained magenta with Alexa Fluor® 647. Images were taken using Leica stellaris 5. Protein abundance based on laser Intensity and smart gain: Medium. Scale bar: 20 µm.



Western blotting analysis using anti-ubiquitination factor E4 A antibody (Cat#62639). Total cell lysates (30 µg) from various cell lines were loaded and separated by SDS-PAGE. The blot was incubated with anti-ubiquitination factor E4 A antibody (Cat#62639, 1:5,000) and HRP-conjugated goat anti-rabbit secondary antibody (Cat#201, 1:20,000) respectively. Image was developed using FeQ™ ECL Substrate Kit (Cat#226).

### SUPPORT

SUPPORT@GENUINBIOTECH.COM  
TEL: +1-540-855-7041

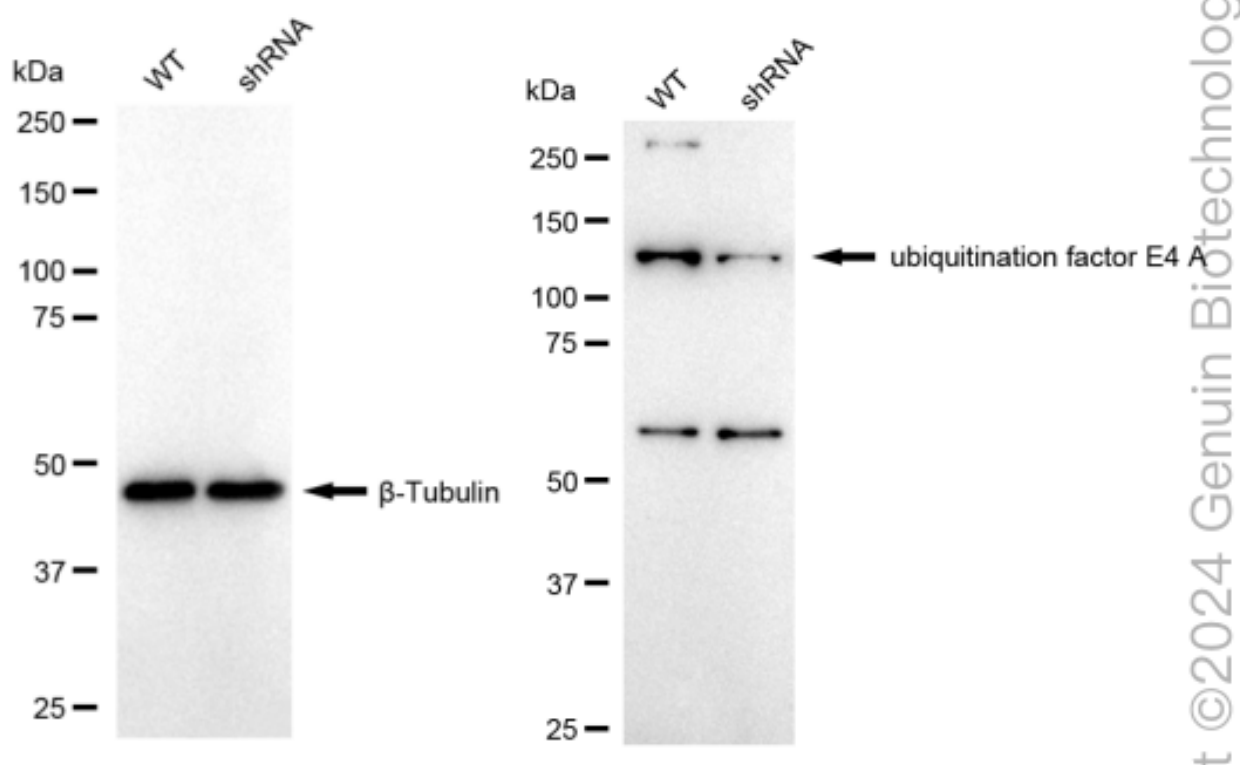
### ORDERS

SALES@GENUINBIOTECH.COM  
FAX: +1-540-855-7041

WWW.GENUINBIOTECH.COM

## KD-Validated Anti-Ubiquitination Factor E4A Recombinant Rabbit Monoclonal Antibody

PAGE 4



Western blotting analysis using anti-ubiquitination factor E4 A antibody (Cat#62639). ubiquitination factor E4 A expression in wild type (WT) and ubiquitination factor E4 A shRNA knockdown (KD) HeLa cells with 20  $\mu$ g of total cell lysates.  $\beta$ -Tubulin serves as a loading control. The blot was incubated with anti-ubiquitination factor E4 A antibody (Cat#62639, 1:5,000) and HRP-conjugated goat anti-rabbit secondary antibody (Cat#201, 1:20,000) respectively. Image was developed using NaQ<sup>TM</sup> ECL Substrate Kit (Cat#716).

### SUPPORT

SUPPORT@GENUINBIOTECH.COM  
TEL: +1-540-855-7041

### ORDERS

SALES@GENUINBIOTECH.COM  
FAX: +1-540-855-7041

WWW.GENUINBIOTECH.COM