

KD-Validated Anti-Synaptosome Associated Protein 29 Recombinant Rabbit Monoclonal



Catalog #: 62640

Aliases

SNAP29; Synaptosome Associated Protein 29; SNAP-29; Soluble 29 KDa NSF Attachment Protein; CEDNIK; Cerebral Dysgenesis, Neuropathy, Ichthyosis And Keratoderma Syndrome; Vesicle-Membrane Fusion Protein SNAP-29; Synaptosomal-Associated Protein, 29kDa; Synaptosomal-Associated Protein 29; Synaptosomal-Associated Protein, 29kD; Synaptosome Associated Protein 29kDa

Background

Gene Name: SNAP29

NCBI Gene Entry: [9342](#)

UniProt Entry: [O95721](#)

Application Information

Molecular Weight: Predicted, 29 kDa, observed, 27 kDa

Clonality: Rabbit monoclonal antibody

Clone ID: 24GB1855

Species Reactivity: Human, mouse, rat

Applications Tested: Western blotting (WB), flow cytometry (FCM), immunocytochemistry (IC)

Immunogen

A synthesized peptide derived from human SNAP29

Isotype

Rabbit IgG

Storage Buffer

Supplied in PBS (pH 7.4) containing 50% glycerol, and 0.02% sodium azide.

Storage

Store at -20 °C for one year.

Recommended Dilutions

Western Blotting (WB): 1:1,000-1:5,000

Flow Cytometry (FCM): 1:2,000

Immunocytochemistry (IC): 1:100-1:1,000

SUPPORT

SUPPORT@GENUINBIOTECH.COM
TEL: +1-540-855-7041

ORDERS

SALES@GENUINBIOTECH.COM
FAX: +1-540-855-7041

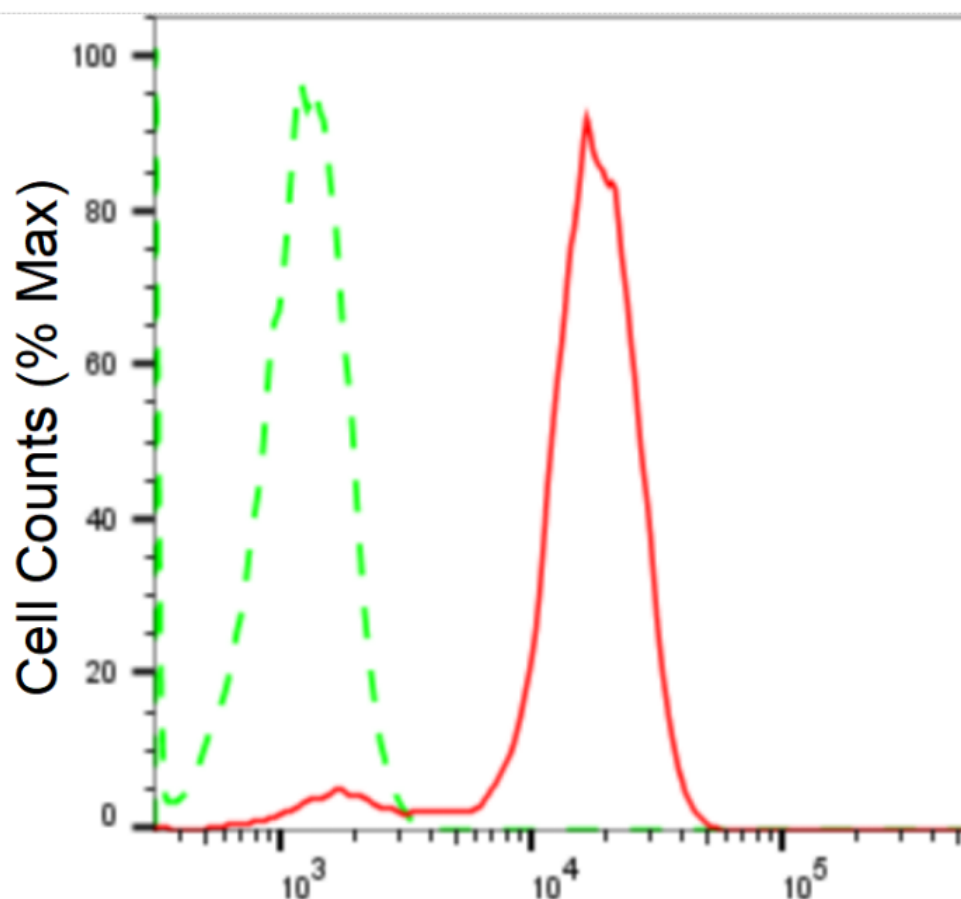
WWW.GENUINBIOTECH.COM

KD-Validated Anti-Synaptosome Associated Protein 29 Recombinant Rabbit Monoclonal

PAGE 2

Note: This product is for research use only.

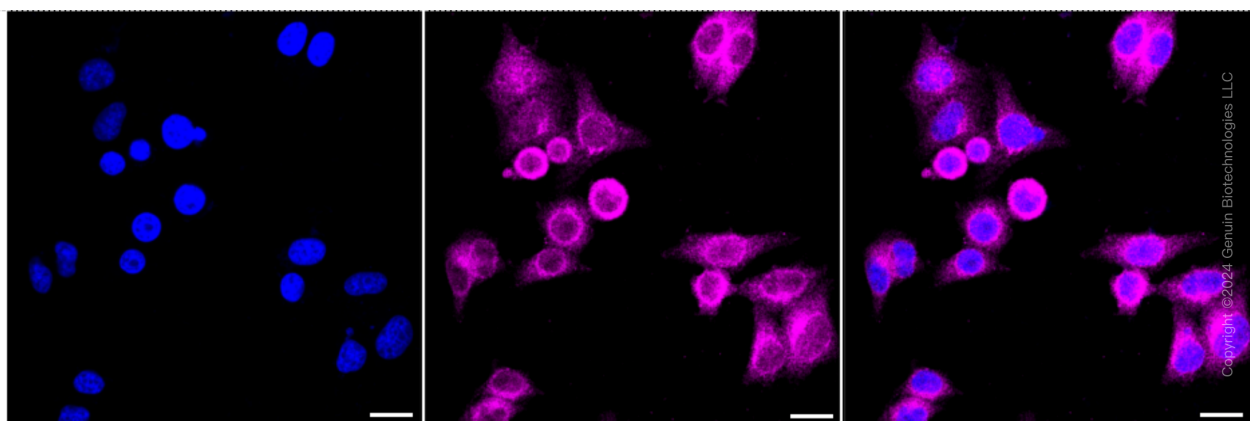
Validation Data



Copyright ©2024 Genuin Biotechnologies LLC

Synaptosome associated protein 29-Alexa Fluor[®] 647

Flow cytometric analysis of Synaptosome associated protein 29 expression in HepG2 cells using anti-Synaptosome associated protein 29 antibody (Cat#62640, 1:2,000). Green, isotype control; red, Synaptosome associated protein 29.



Copyright ©2024 Genuin Biotechnologies LLC

SUPPORT

SUPPORT@GENUINBIOTECH.COM
TEL: +1-540-855-7041

ORDERS

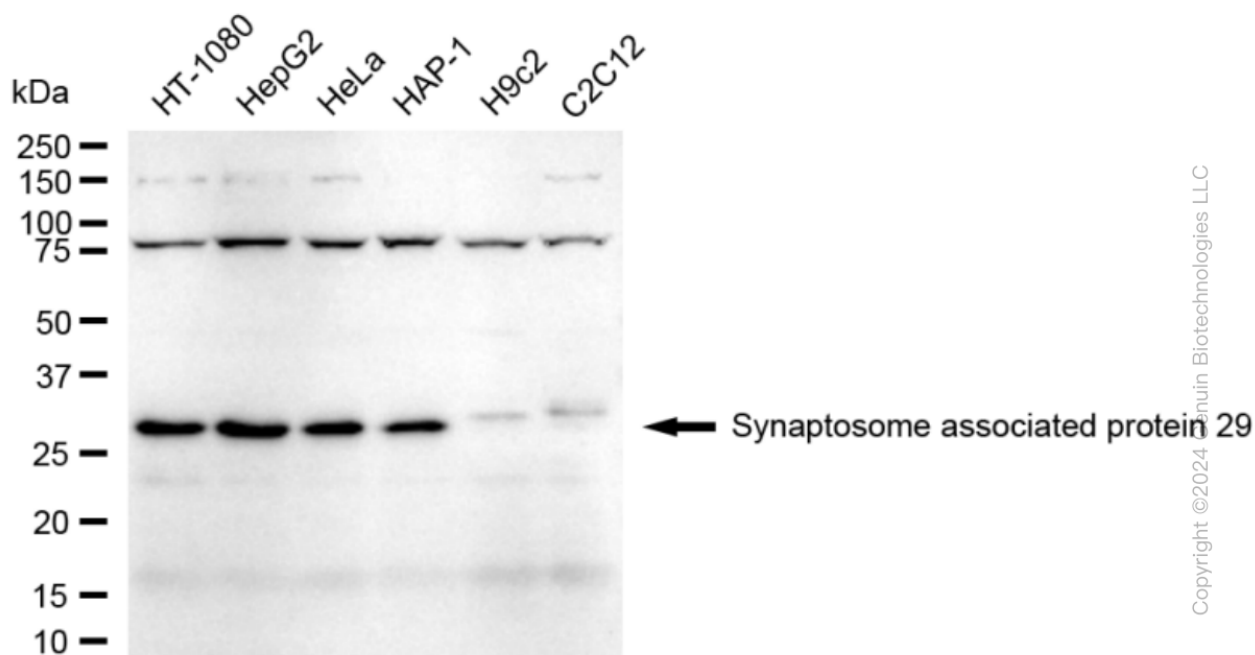
SALES@GENUINBIOTECH.COM
FAX: +1-540-855-7041

WWW.GENUINBIOTECH.COM

KD-Validated Anti-Synaptosome Associated Protein 29 Recombinant Rabbit Monoclonal

PAGE 3

Immunocytochemical staining of HepG2 cells with anti-Synaptosome associated protein 29 antibody (Cat#62640, 1:1,000). Nuclei were stained blue with DAPI; Synaptosome associated protein 29 was stained magenta with Alexa Fluor® 647. Images were taken using Leica stellaris 5. Protein abundance based on laser Intensity and smart gain: Medium. Scale bar: 20 µm.



Western blotting analysis using anti-Synaptosome associated protein 29 antibody (Cat#62640). Total cell lysates (30 µg) from various cell lines were loaded and separated by SDS-PAGE. The blot was incubated with anti-Synaptosome associated protein 29 antibody (Cat#62640, 1:5,000) and HRP-conjugated goat anti-rabbit secondary antibody (Cat#201, 1:20,000) respectively. Image was developed using FeQ™ ECL Substrate Kit (Cat#226).

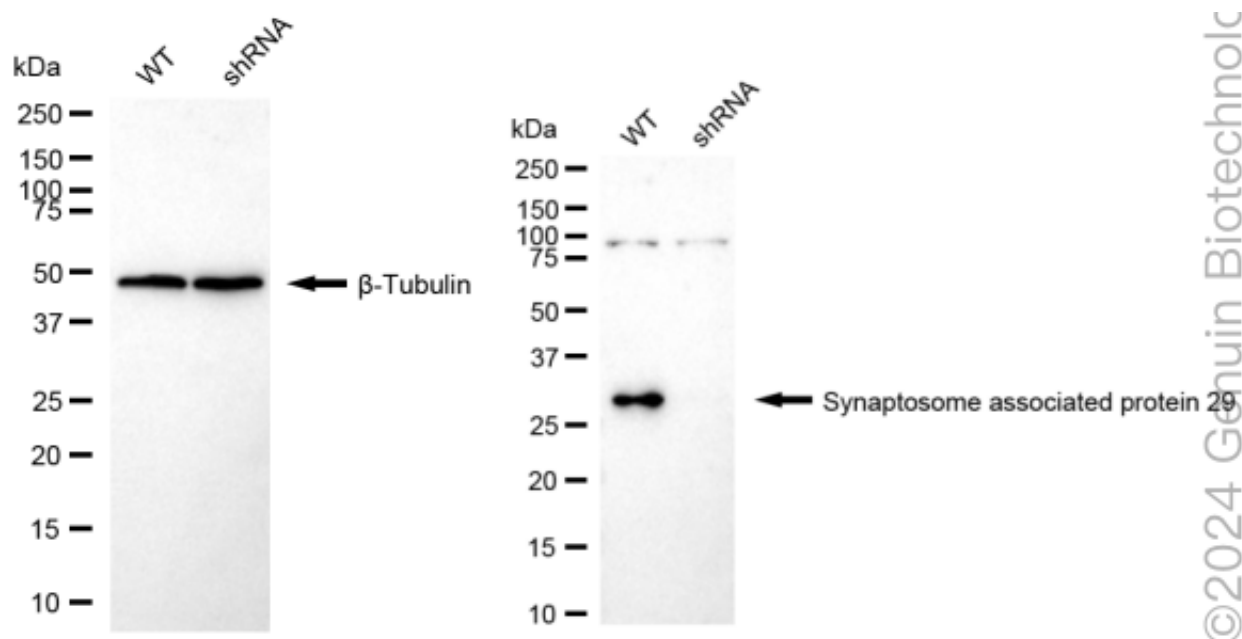
SUPPORT

SUPPORT@GENUINBIOTECH.COM
TEL: +1-540-855-7041

ORDERS

SALES@GENUINBIOTECH.COM
FAX: +1-540-855-7041

WWW.GENUINBIOTECH.COM



Western blotting analysis using anti-Synaptosome associated protein 29 antibody (Cat#62640). Synaptosome associated protein 29 expression in wild type (WT) and Synaptosome associated protein 29 shRNA knockdown (KD) HeLa cells with 20 µg of total cell lysates. β-Tubulin serves as a loading control. The blot was incubated with anti-Synaptosome associated protein 29 antibody (Cat#62640, 1:5,000) and HRP-conjugated goat anti-rabbit secondary antibody (Cat#201, 1:20,000) respectively. Image was developed using NaQ™ ECL Substrate Kit (Cat#716).