

KD-Validated Anti-STAT5A Recombinant Rabbit Monoclonal Antibody



Catalog #: 62641

Aliases

STAT5A; Signal Transducer And Activator Of Transcription 5A; STAT5; MGF; Epididymis Secretory Sperm Binding Protein

Background

Gene Name: STAT5A

NCBI Gene Entry: [6776](#)

UniProt Entry: [P42229](#)

Application Information

Molecular Weight: Predicted, 91 kDa, observed, 92 kDa

Clonality: Rabbit monoclonal antibody

Clone ID: 24GB1920

Species Reactivity: Human, mouse

Applications Tested: Western blotting (WB), flow cytometry (FCM), immunocytochemistry (IC)

Immunogen

A synthesized peptide derived from human STAT5a

Isotype

Rabbit IgG

Storage Buffer

Supplied in PBS (pH 7.4) containing 50% glycerol, and 0.02% sodium azide.

Storage

Store at -20 °C for one year.

Recommended Dilutions

Western Blotting (WB): 1:1,000-1:5,000

Flow Cytometry (FCM): 1:2,000

Immunocytochemistry (IC): 1:100-1:1,000

Note: This product is for research use only.

Validation Data

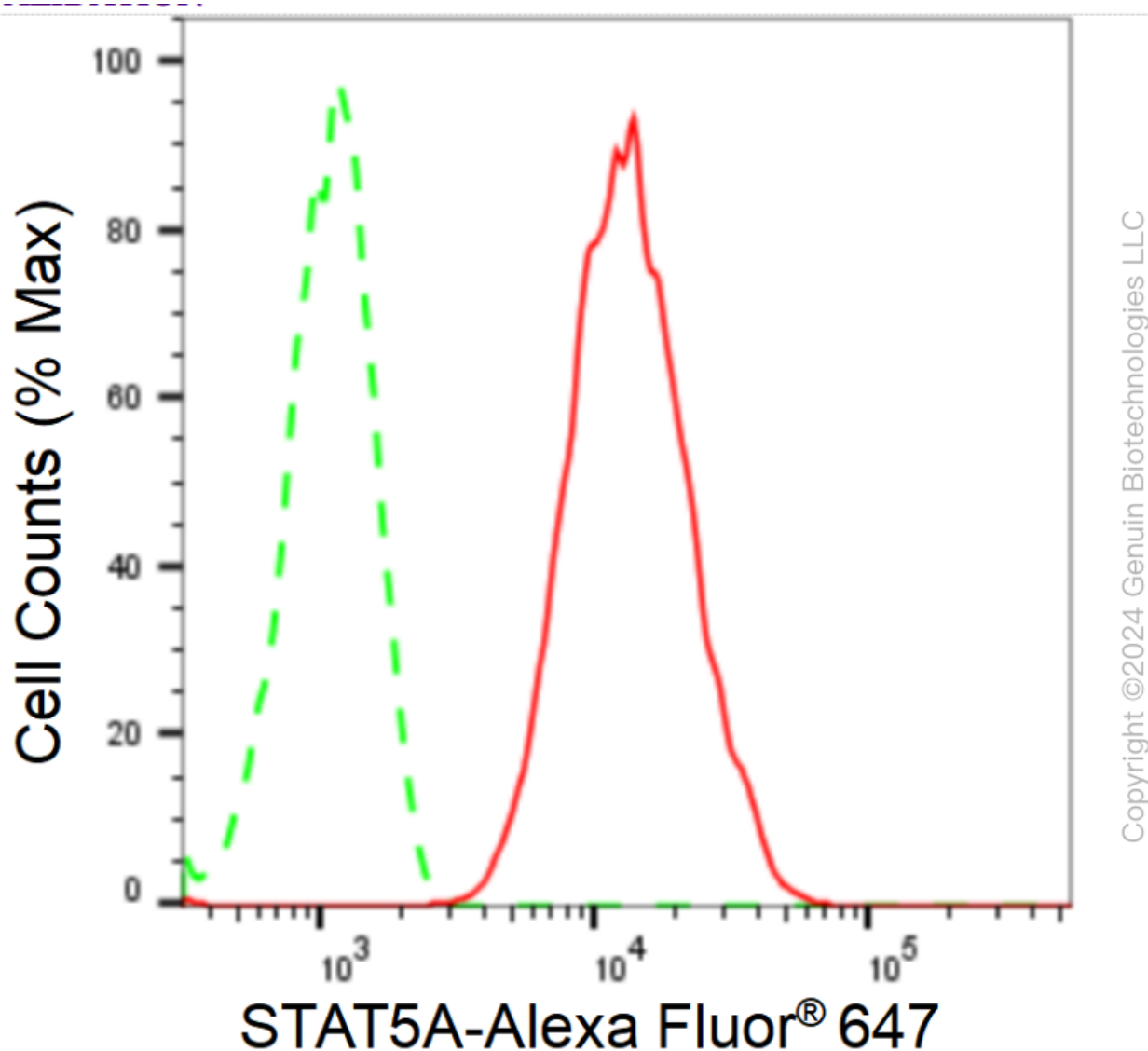
SUPPORT

SUPPORT@GENUINBIOTECH.COM
TEL: +1-540-855-7041

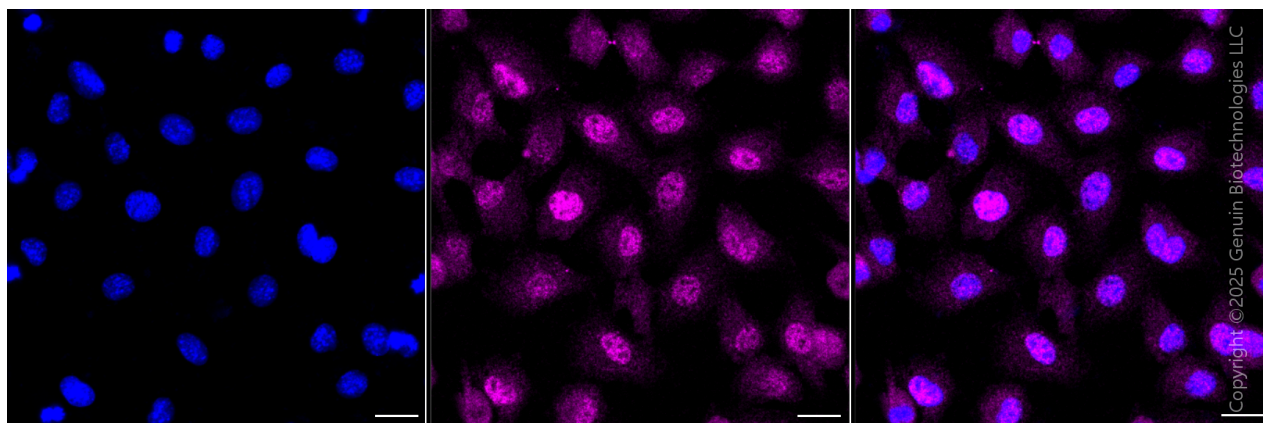
ORDERS

SALES@GENUINBIOTECH.COM
FAX: +1-540-855-7041

WWW.GENUINBIOTECH.COM



Flow cytometric analysis of STAT5A expression in C2C12 cells using anti-STAT5A antibody (Cat#62641, 1:2,000). Green, isotype control; red, STAT5A.



SUPPORT

SUPPORT@GENUINBIOTECH.COM
TEL: +1-540-855-7041

ORDERS

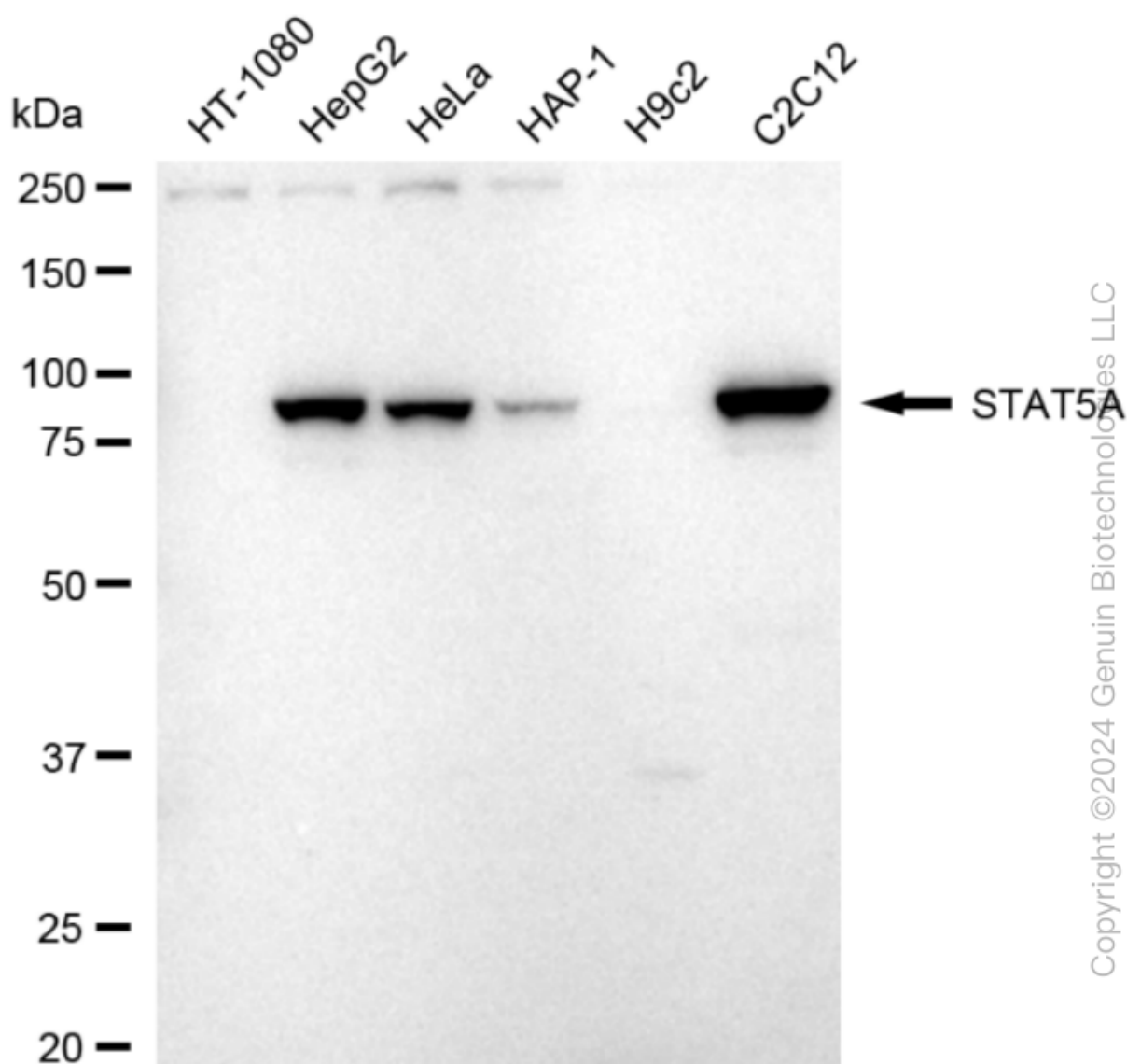
SALES@GENUINBIOTECH.COM
FAX: +1-540-855-7041

WWW.GENUINBIOTECH.COM

KD-Validated Anti-STAT5A Recombinant Rabbit Monoclonal Antibody

PAGE 3

Immunocytochemical staining of C2C12 cells with anti-STAT5A antibody (Cat#62641, 1:1,000). Nuclei were stained blue with DAPI; STAT5A was stained magenta with Alexa Fluor® 647. Images were taken using Leica stellaris 5. Protein abundance based on laser Intensity and Smart Gain□Medium. Scale bar, 20 μm.



Western blotting analysis using anti-STAT5A antibody (Cat#62641). Total cell lysates (30 μg) from various cell lines were loaded and separated by SDS-PAGE. The blot was incubated with anti-STAT5A antibody (Cat#62641, 1:5,000) and HRP-conjugated goat anti-rabbit secondary antibody (Cat#201, 1:20,000) respectively. Image was developed using FeQ™ ECL Substrate Kit (Cat#226).

SUPPORT

SUPPORT@GENUINBIOTECH.COM
TEL: +1-540-855-7041

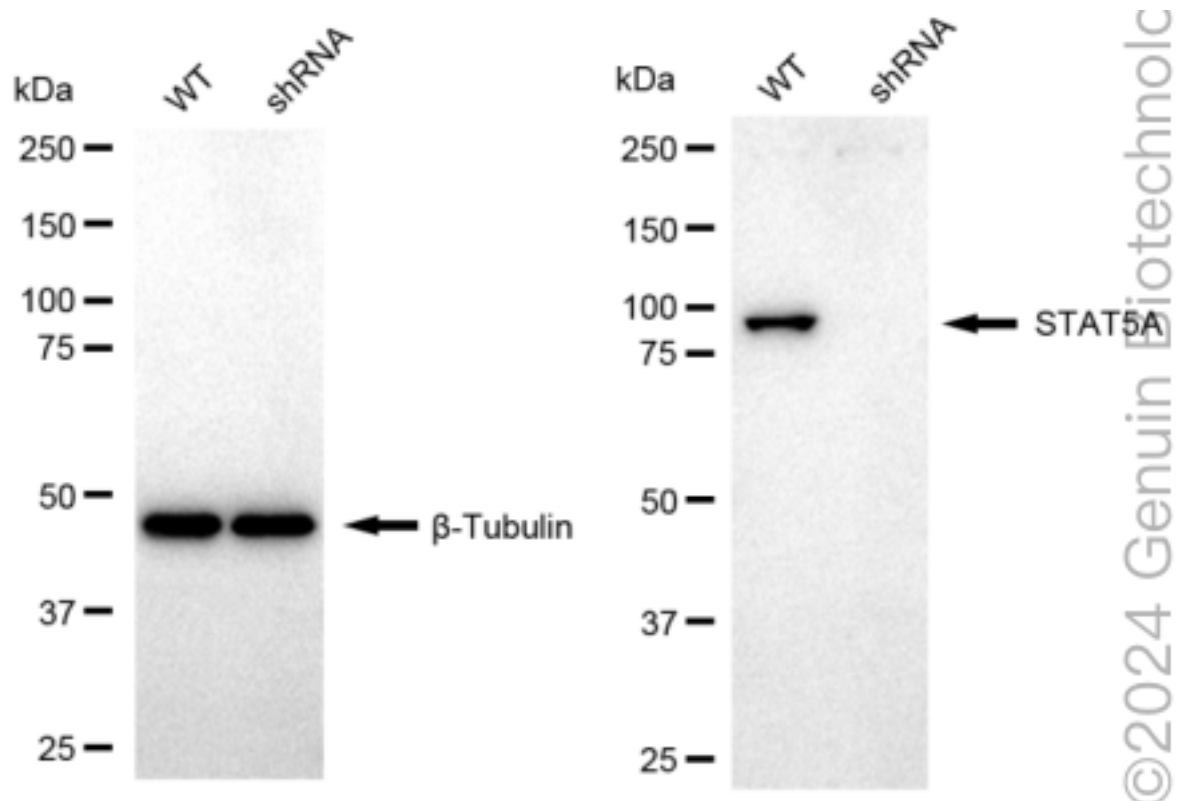
ORDERS

SALES@GENUINBIOTECH.COM
FAX: +1-540-855-7041

WWW.GENUINBIOTECH.COM

KD-Validated Anti-STAT5A Recombinant Rabbit Monoclonal Antibody

PAGE 4



Western blotting analysis using anti-STAT5A antibody (Cat#62641). STAT5A expression in wild type (WT) and STAT5A shRNA knockdown (KD) HeLa cells with 20 μ g of total cell lysates. β -Tubulin serves as a loading control. The blot was incubated with anti-STAT5A antibody (Cat#62641, 1:5,000) and HRP-conjugated goat anti-rabbit secondary antibody (Cat#201, 1:20,000) respectively. Image was developed using NaQTM ECL Substrate Kit (Cat#716).

SUPPORT

SUPPORT@GENUINBIOTECH.COM
TEL: +1-540-855-7041

ORDERS

SALES@GENUINBIOTECH.COM
FAX: +1-540-855-7041

WWW.GENUINBIOTECH.COM