

KD-Validated Anti-Tumor Protein P73 Recombinant Rabbit Monoclonal Antibody



Catalog #: 62644

Aliases

TP73; Tumor Protein P73; P73; P53-Like Transcription Factor; P53-Related Protein; CILD47

Background

Gene Name: TP73

NCBI Gene Entry: [7161](#)

UniProt Entry: [O15350](#)

Application Information

Molecular Weight: Predicted, 70 kDa, observed, 70 kDa

Clonality: Rabbit monoclonal antibody

Clone ID: 24GB2040

Species Reactivity: Human

Applications Tested: Western blotting (WB), flow cytometry (FCM), immunocytochemistry (IC)

Immunogen

A synthesized peptide derived from human p73

Isotype

Rabbit IgG

Storage Buffer

Supplied in PBS (pH 7.4) containing 50% glycerol, and 0.02% sodium azide.

Storage

Store at -20 °C for one year.

Recommended Dilutions

Western Blotting (WB): 1:1,000-1:5,000

Flow Cytometry (FCM): 1:2,000

Immunocytochemistry (IC): 1:100-1:1,000

Note: This product is for research use only.

Validation Data

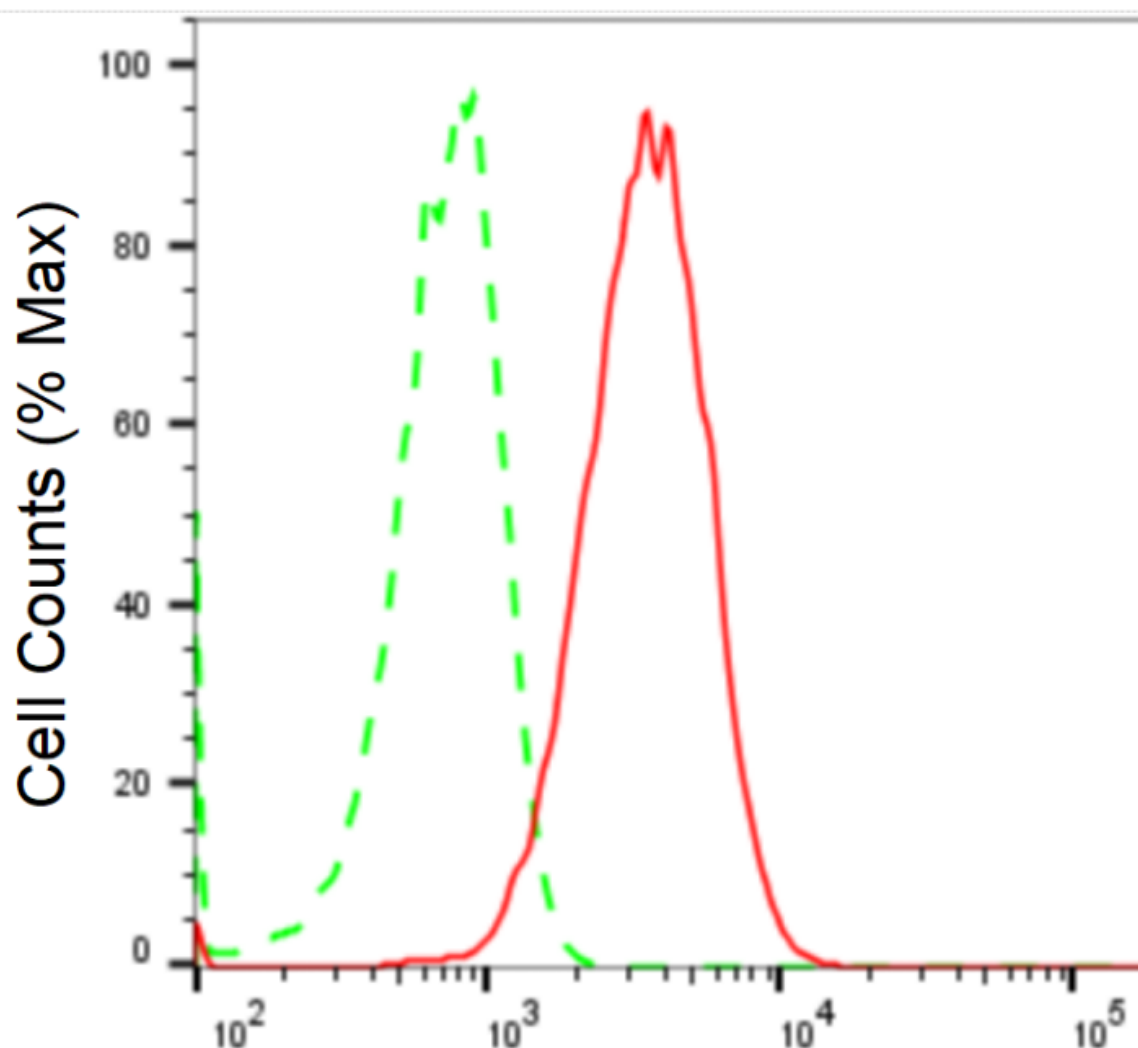
SUPPORT

SUPPORT@GENUINBIOTECH.COM
TEL: +1-540-855-7041

ORDERS

SALES@GENUINBIOTECH.COM
FAX: +1-540-855-7041

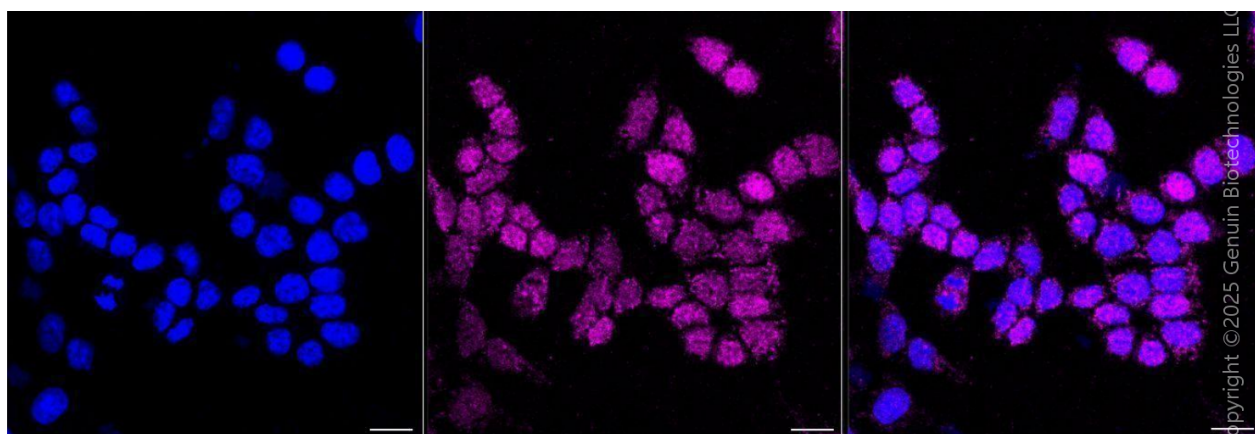
WWW.GENUINBIOTECH.COM



Copyright ©2024 Genuin Biotechnologies LLC

Tumor protein p73-Alexa Fluor® 647

Flow cytometric analysis of Tumor protein p73 expression in HAP-1 cells using anti-Tumor protein p73 antibody (Cat#62644, 1:2,000). Green, isotype control; red, Tumor protein p73.



Copyright ©2025 Genuin Biotechnologies LLC

SUPPORT

SUPPORT@GENUINBIOTECH.COM
TEL: +1-540-855-7041

ORDERS

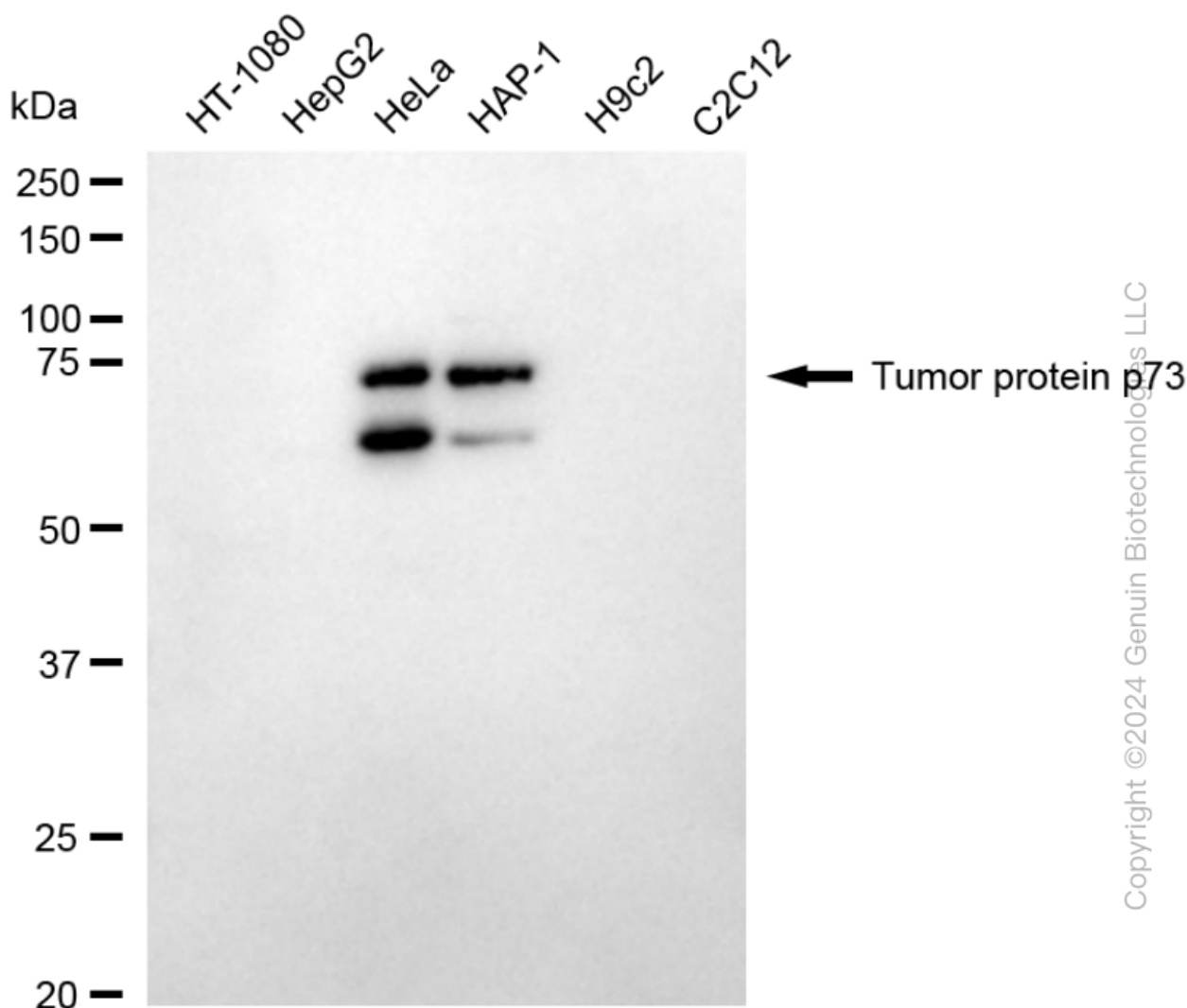
SALES@GENUINBIOTECH.COM
FAX: +1-540-855-7041

WWW.GENUINBIOTECH.COM

KD-Validated Anti-Tumor Protein P73 Recombinant Rabbit Monoclonal Antibody

PAGE 3

Immunocytochemical staining of HAP-1 cells with anti-Tumor protein p73 antibody (Cat#62644, 1:1,000). Nuclei were stained blue with DAPI; Tumor protein p73 was stained magenta with Alexa Fluor® 647. Images were taken using Leica stellaris 5. Protein abundance based on laser Intensity and smart gain: Medium. Scale bar, 20 μ m.



Western blotting analysis using anti-tumor protein p73 antibody (Cat#62644). Total cell lysates (30 μ g) from various cell lines were loaded and separated by SDS-PAGE. The blot was incubated with anti-tumor protein p73 antibody (Cat#62644, 1:5,000) and HRP-conjugated goat anti-rabbit secondary antibody (Cat#201, 1:20,000) respectively. Image was developed using FeQ™ ECL Substrate Kit (Cat#226).

SUPPORT

SUPPORT@GENUINBIOTECH.COM
TEL: +1-540-855-7041

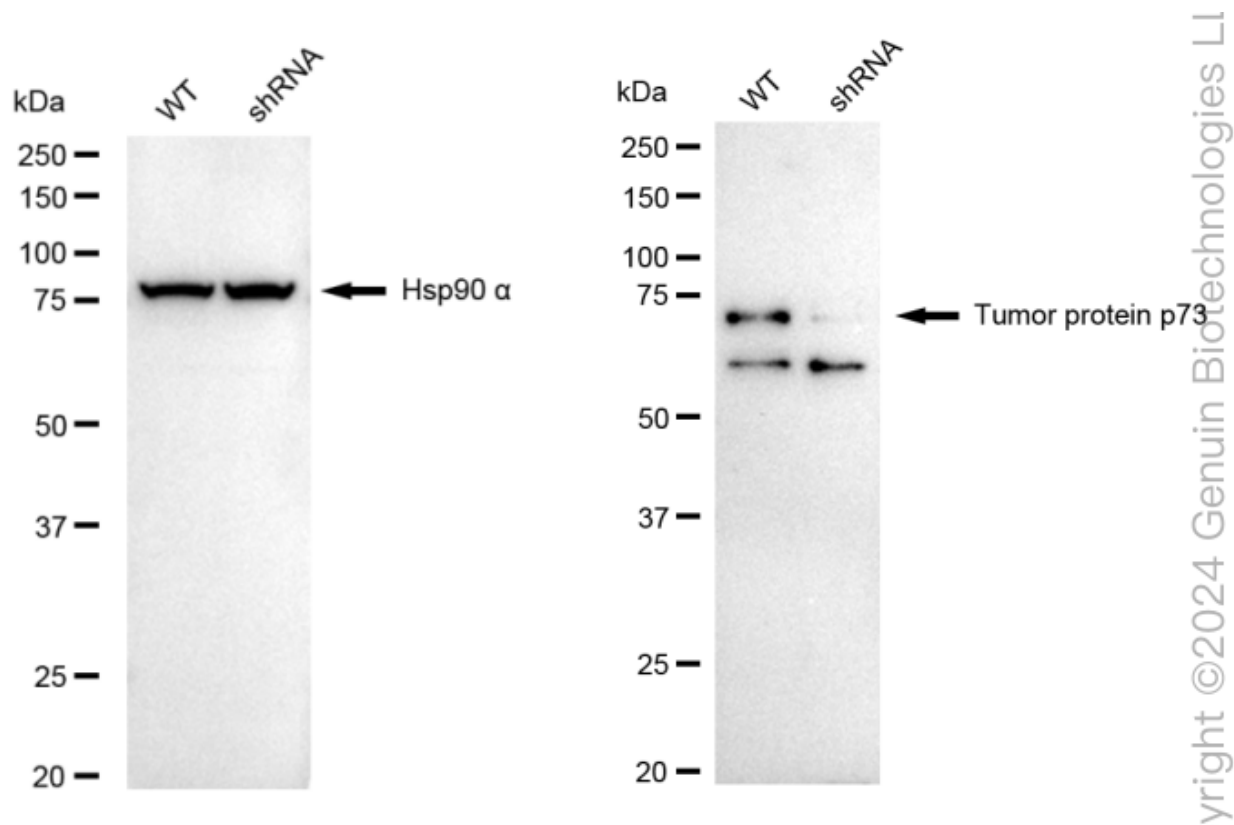
ORDERS

SALES@GENUINBIOTECH.COM
FAX: +1-540-855-7041

WWW.GENUINBIOTECH.COM

KD-Validated Anti-Tumor Protein P73 Recombinant Rabbit Monoclonal Antibody

PAGE 4



Western blotting analysis using anti-tumor protein p73 antibody (Cat#62644). Tumor protein p73 expression in wild-type (WT) and tumor protein p73 (TP73) shRNA knockdown (KD) HeLa cells with 30 µg of total cell lysates. Hsp90 α serves as a loading control. The blot was incubated with anti-tumor protein p73 antibody (Cat#62644, 1:5,000) and HRP-conjugated goat anti-rabbit secondary antibody (Cat#201, 1:20,000) respectively. Image was developed using NaQ™ ECL Substrate Kit (Cat#716).

SUPPORT

SUPPORT@GENUINBIOTECH.COM
TEL: +1-540-855-7041

ORDERS

SALES@GENUINBIOTECH.COM
FAX: +1-540-855-7041

WWW.GENUINBIOTECH.COM