

KD-Validated Anti-TNFRSF12A Recombinant Rabbit Monoclonal Antibody



Catalog #: 62645

Aliases

TNFRSF12A; TNF Receptor Superfamily Member 12A; TweakR; FN14; CD266; Fibroblast Growth Factor-Inducible Immediate-Early Response Protein 14; Tumor Necrosis Factor Receptor Superfamily Member 12A; FGF-Inducible 14; Tweak-Receptor; Tumor Necrosis Factor Receptor Superfamily, Member 12A; Type I Transmembrane Protein Fn14; CD266 Antigen

Background

Gene Name: TNFRSF12A

NCBI Gene Entry: [51330](#)

UniProt Entry: [Q9NP84](#)

Application Information

Molecular Weight: Predicted, 14 kDa, observed, 18 kDa

Clonality: Rabbit monoclonal antibody

Clone ID: 24GB2070

Species Reactivity: Human

Applications Tested: Western blotting (WB), flow cytometry (FCM), immunocytochemistry (IC)

Immunogen

A synthesized peptide derived from human TWEAKR

Isotype

Rabbit IgG

Storage Buffer

Supplied in PBS (pH 7.4) containing 50% glycerol, and 0.02% sodium azide.

Storage

Store at -20 °C for one year.

Recommended Dilutions

Western Blotting (WB): 1:1,000-1:5,000

Flow Cytometry (FCM): 1:2,000

Immunocytochemistry (IC): 1:100-1:1,000

SUPPORT

SUPPORT@GENUINBIOTECH.COM
TEL: +1-540-855-7041

ORDERS

SALES@GENUINBIOTECH.COM
FAX: +1-540-855-7041

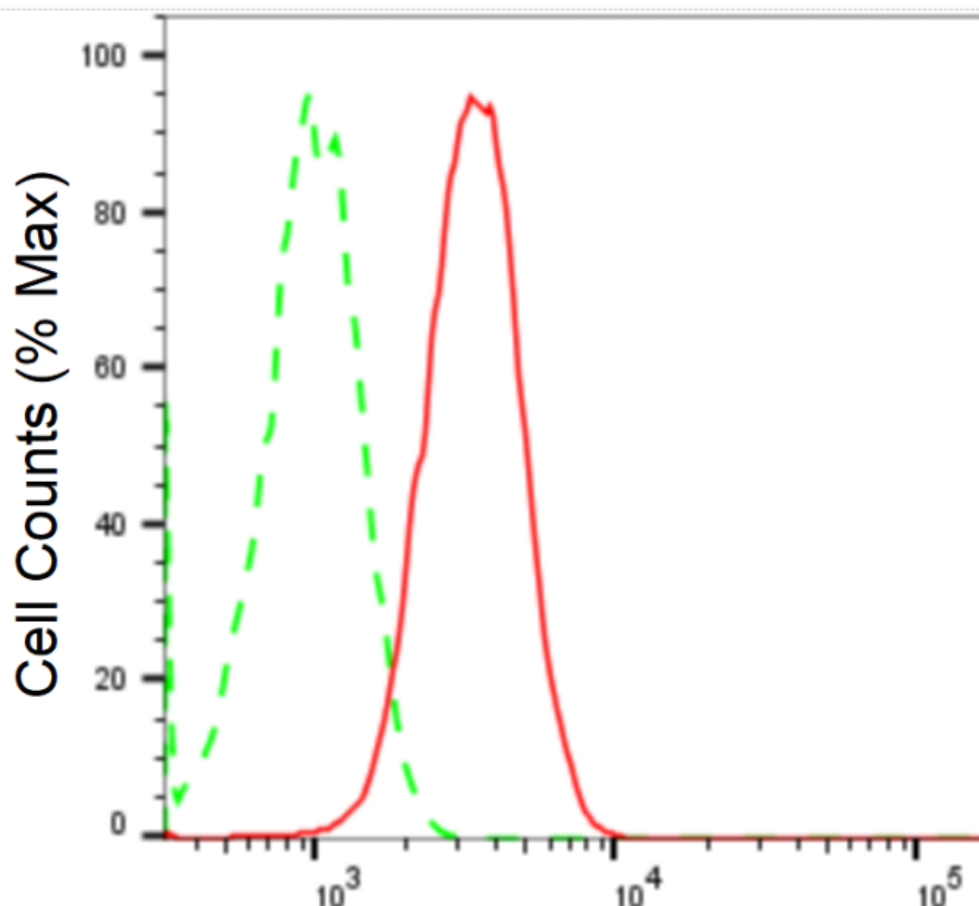
WWW.GENUINBIOTECH.COM

KD-Validated Anti-TNFRSF12A Recombinant Rabbit Monoclonal Antibody

PAGE 2

Note: This product is for research use only.

Validation Data



Copyright ©2024 Genuin Biotechnologies LLC

TNF receptor superfamily member 12A-Alexa Fluor® 647

Flow cytometric analysis of TNF receptor superfamily member 12A expression in HT-1080 cells using anti-TNF receptor superfamily member 12A antibody (Cat#62645, 1:2,000). Green, isotype control; red, TNF receptor superfamily member 12A.

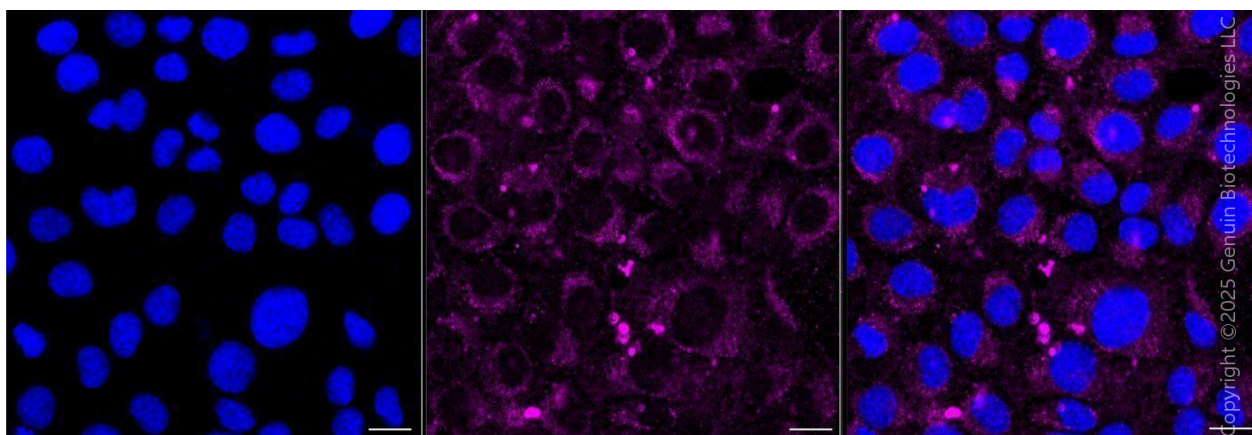
SUPPORT

SUPPORT@GENUINBIOTECH.COM
TEL: +1-540-855-7041

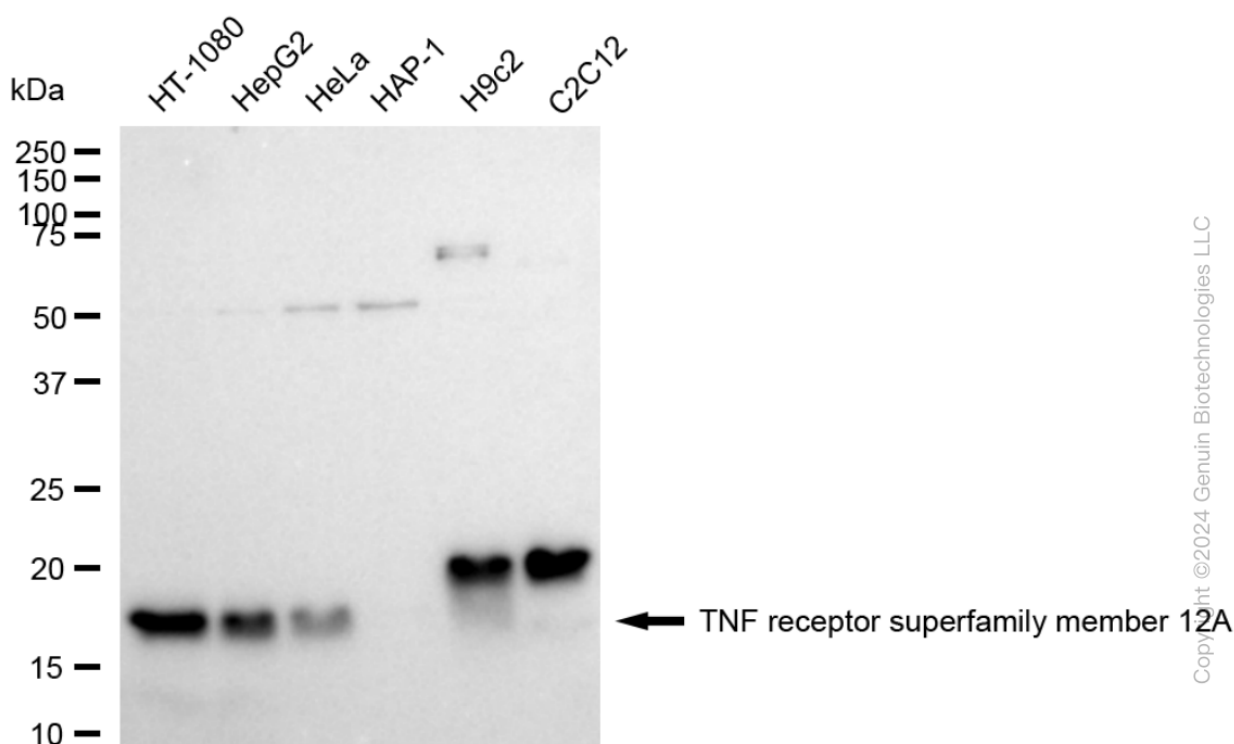
ORDERS

SALES@GENUINBIOTECH.COM
FAX: +1-540-855-7041

WWW.GENUINBIOTECH.COM



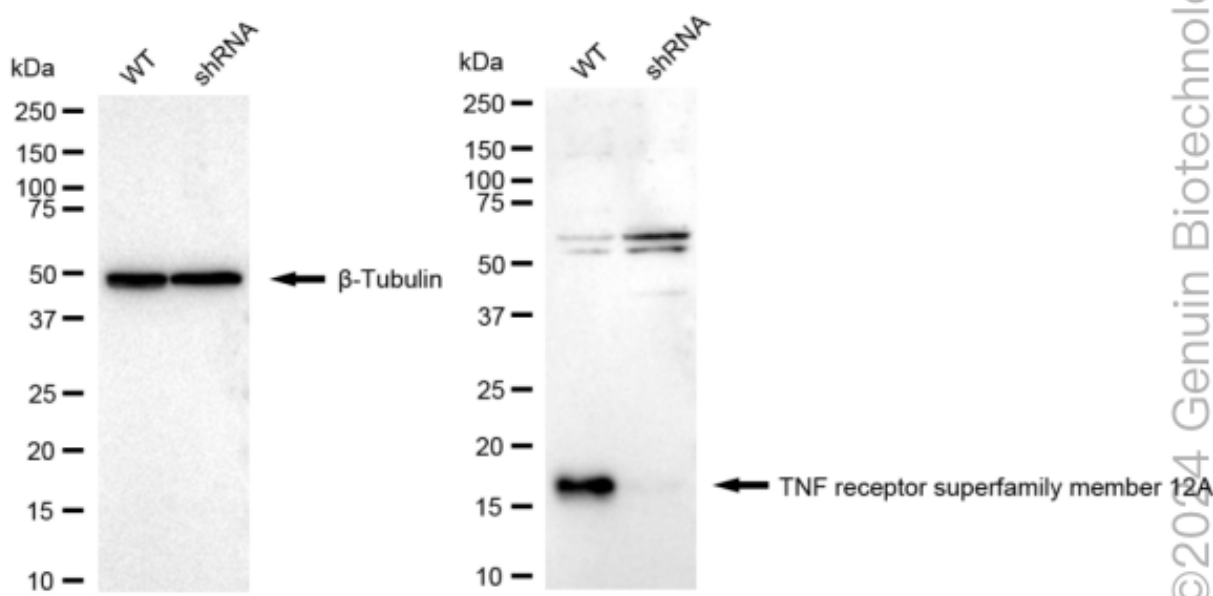
Immunocytochemical staining of HT-1080 cells with anti-TNF receptor superfamily member 12A antibody (Cat#62645, 1:1,000) . Nuclei were stained blue with DAPI; TNF receptor superfamily member 12A was stained magenta with Alexa Fluor® 647. Images were taken using Leica stellaris 5. Protein abundance based on laser Intensity and smart gain: Medium. Scale bar, 20 µm.



Western blotting analysis using anti-TNF receptor superfamily member 12A antibody (Cat#62645). Total cell lysates (30 µg) from various cell lines were loaded and separated by SDS-PAGE. The blot was incubated with anti-TNF receptor superfamily member 12A antibody (Cat#62645, 1:5,000) and HRP-conjugated goat anti-rabbit secondary antibody (Cat#201, 1:20,000) respectively. Image was developed using FeQ™ ECL Substrate Kit (Cat#226).

KD-Validated Anti-TNFRSF12A Recombinant Rabbit Monoclonal Antibody

PAGE 4



Western blotting analysis using anti-TNF receptor superfamily member 12A antibody (Cat#62645). TNF receptor superfamily member 12A expression in wild type (WT) and TNF receptor superfamily member 12A shRNA knockdown (KD) HeLa cells with 20 μ g of total cell lysates. β -Tubulin serves as a loading control. The blot was incubated with anti-TNF receptor superfamily member 12A antibody (Cat#62645, 1:5,000) and HRP-conjugated goat anti-rabbit secondary antibody (Cat#201, 1:20,000) respectively. Image was developed using NaQTM ECL Substrate Kit (Cat#716).

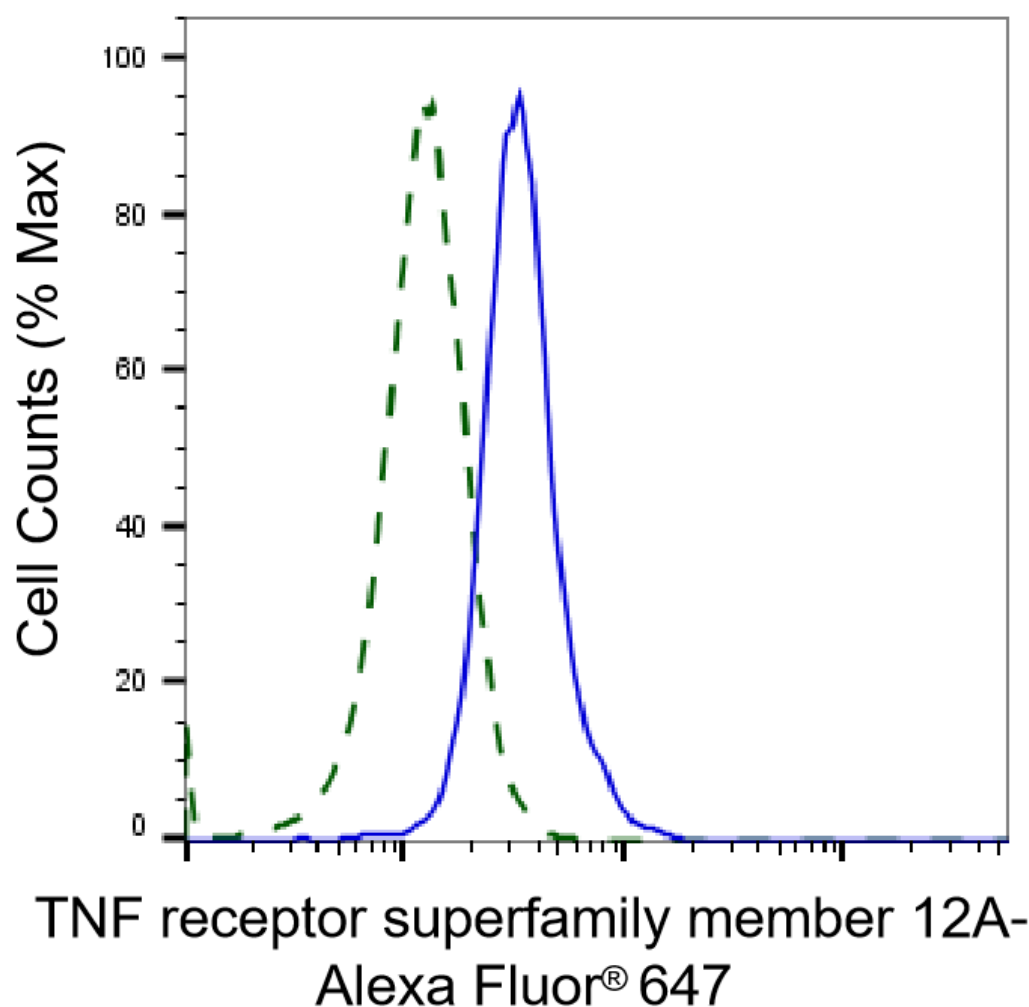
SUPPORT

SUPPORT@GENUINBIOTECH.COM
TEL: +1-540-855-7041

ORDERS

SALES@GENUINBIOTECH.COM
FAX: +1-540-855-7041

WWW.GENUINBIOTECH.COM



Copyright ©2025 Genuin Biotechnologies LLC

Validation of TNF receptor superfamily member 12A knockdown using flow cytometry. Wild-type(WT, Blue) and knockdown(KD, Green) HeLa cells were stained with anti-TNF receptor superfamily member 12A antibody (Cat#62645, 1:2,000) and analyzed using BD flow cytometer.