

KD-Validated Anti-STAT5B Recombinant Rabbit Monoclonal Antibody



Catalog #: 62648

Aliases

STAT5B; Signal Transducer And Activator Of Transcription 5B; Transcription Factor STAT5B; GHISID2; STAT5

Background

Gene Name: STAT5B

NCBI Gene Entry: [6777](#)

UniProt Entry: [P51692](#)

Application Information

Molecular Weight: Predicted, 14 kDa, observed, 18 kDa

Clonality: Rabbit monoclonal antibody

Clone ID: 24GB2110

Species Reactivity: Human, mouse, rat

Applications Tested: Western blotting (WB), flow cytometry (FCM), immunocytochemistry (IC)

Immunogen

A synthesized peptide derived from human STAT5B

Isotype

Rabbit IgG

Storage Buffer

Supplied in PBS (pH 7.4) containing 50% glycerol, and 0.02% sodium azide.

Storage

Store at -20 °C for one year.

Recommended Dilutions

Western Blotting (WB): 1:1,000-1:5,000

Flow Cytometry (FCM): 1:2,000

Immunocytochemistry (IC): 1:100-1:1,000

Note: This product is for research use only.

Validation Data

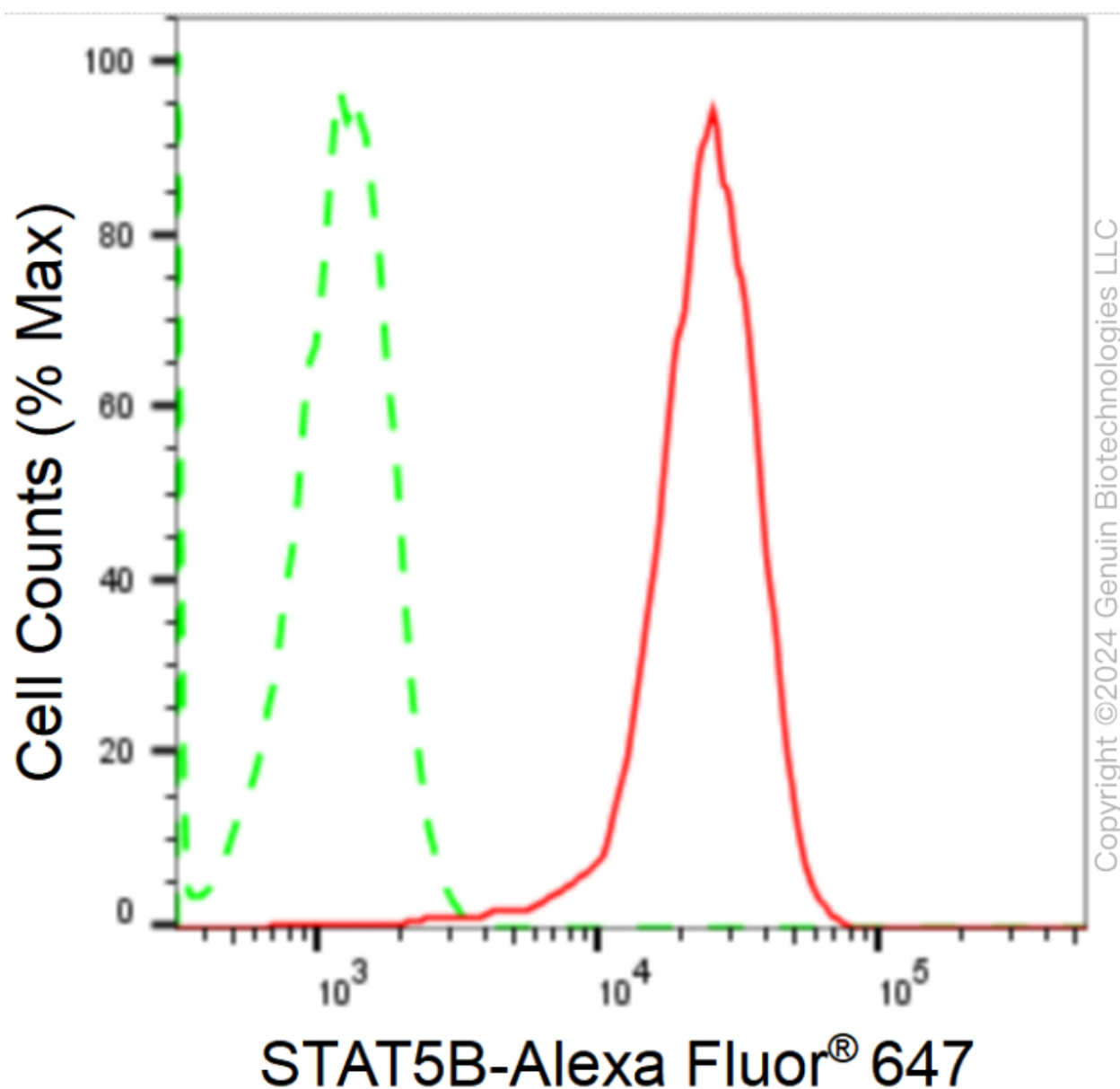
SUPPORT

SUPPORT@GENUINBIOTECH.COM
TEL: +1-540-855-7041

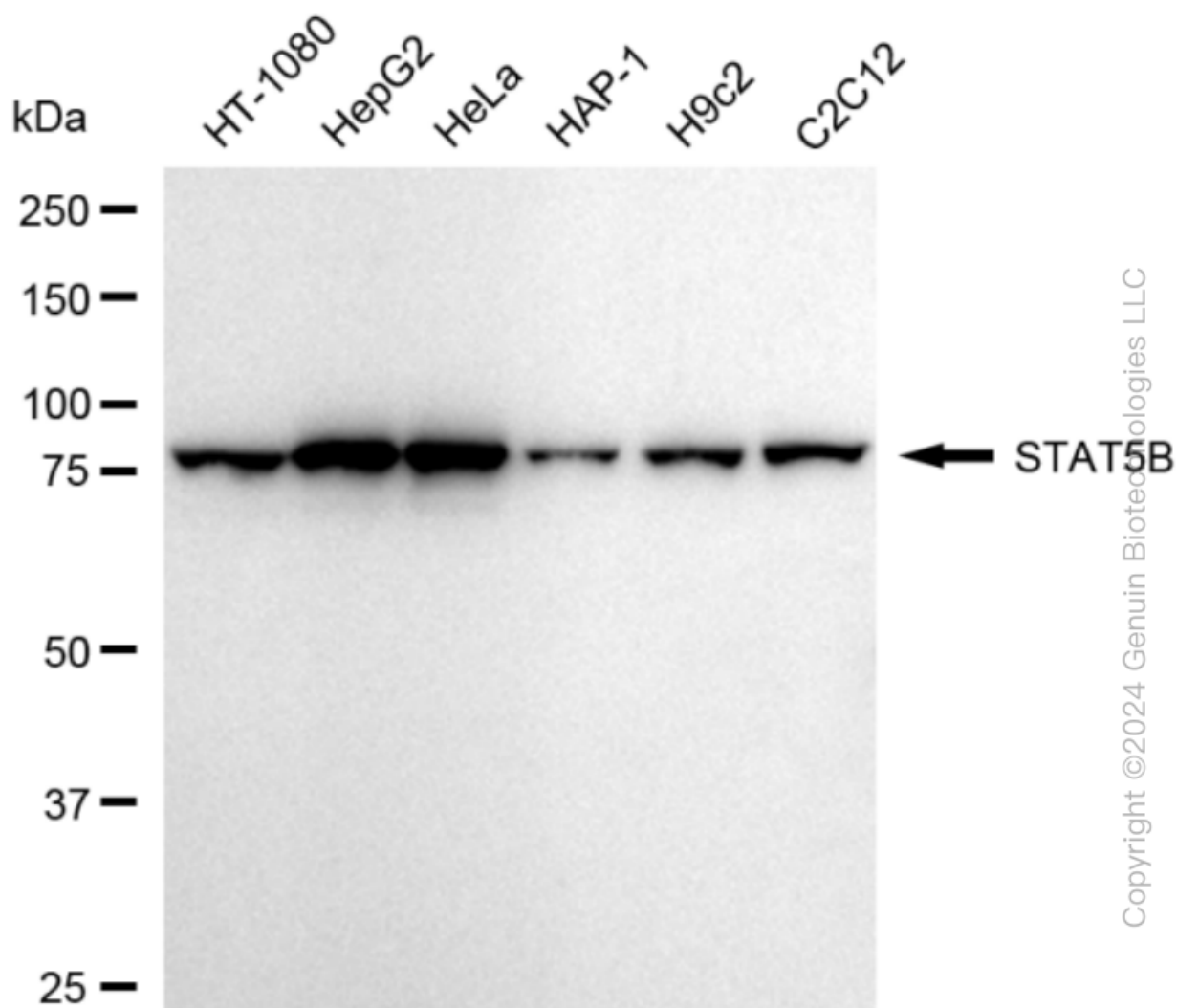
ORDERS

SALES@GENUINBIOTECH.COM
FAX: +1-540-855-7041

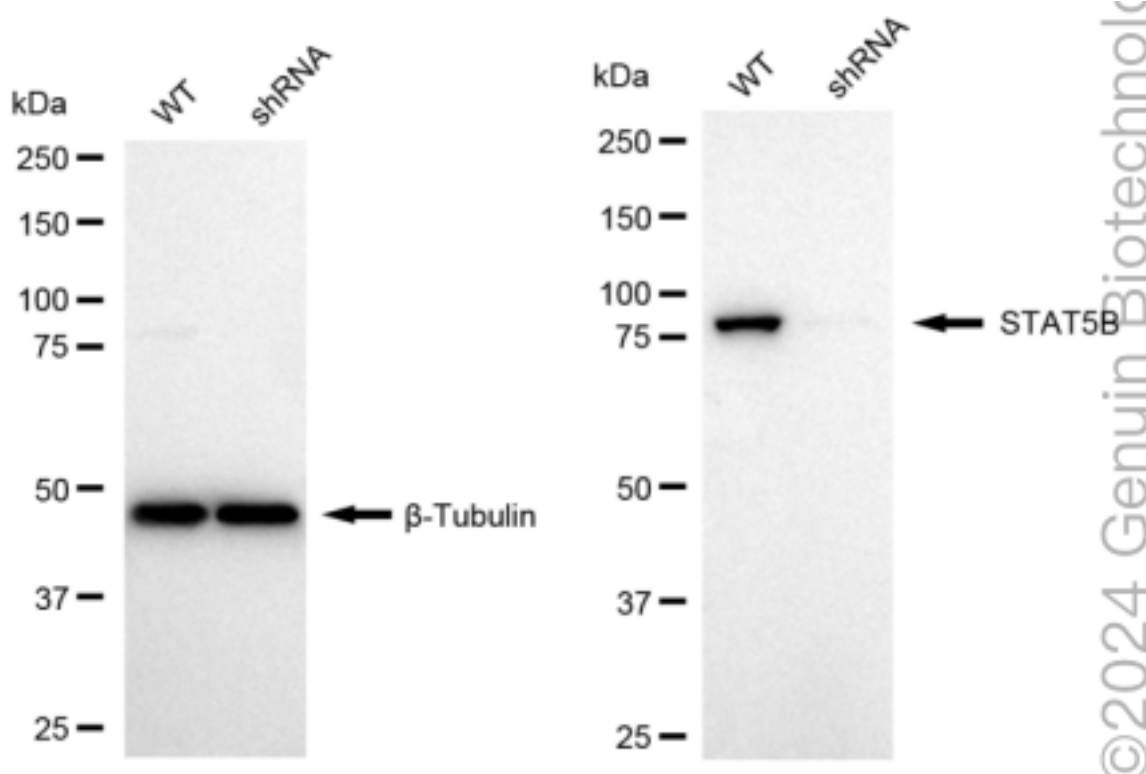
WWW.GENUINBIOTECH.COM



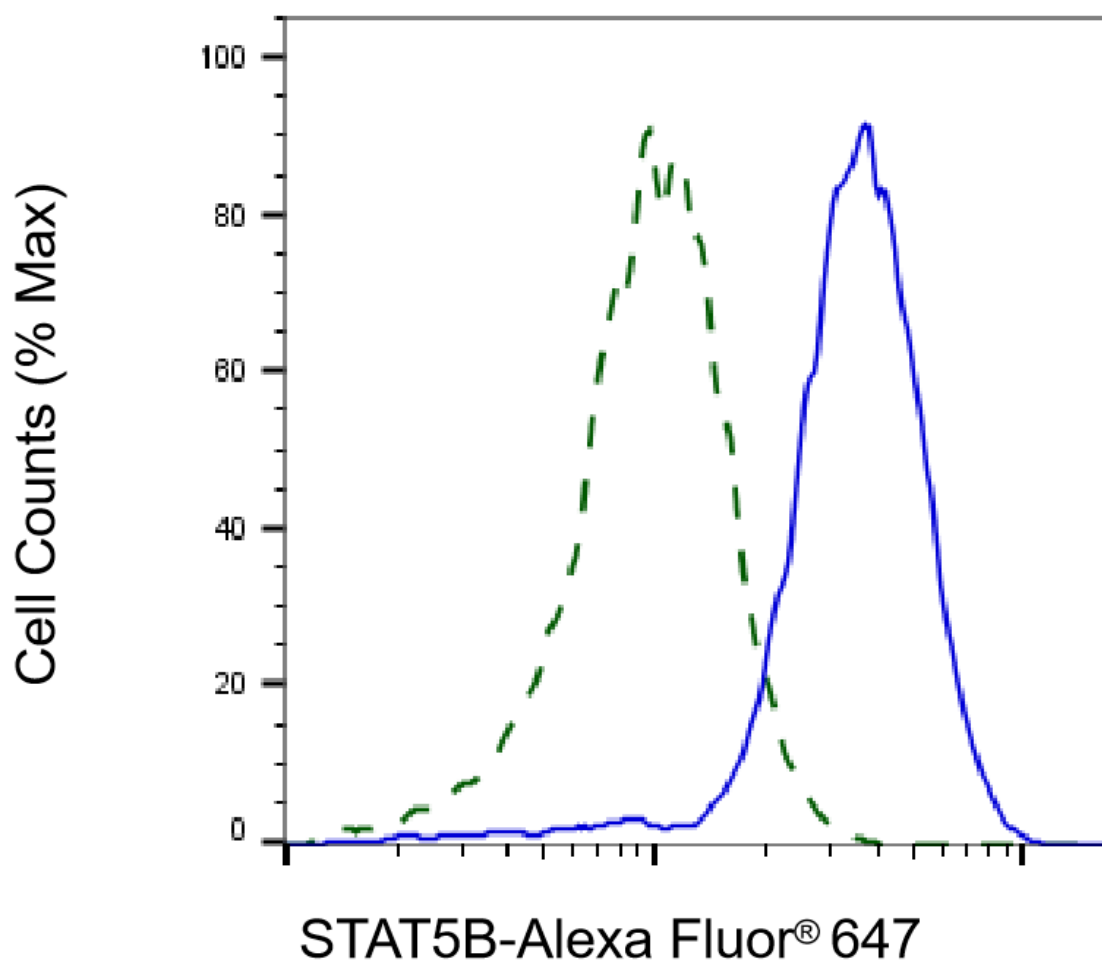
Flow cytometric analysis of STAT5B expression in HepG2 cells using anti-STAT5B antibody (Cat#62648, 1:2,000). Green, isotype control; red, STAT5B.



Western blotting analysis using anti-STAT5B antibody (Cat#62648). Total cell lysates (30 µg) from various cell lines were loaded and separated by SDS-PAGE. The blot was incubated with anti-STAT5B antibody (Cat#62648, 1:5,000) and HRP-conjugated goat anti-rabbit secondary antibody (Cat#201, 1:20,000) respectively. Image was developed using FeQ™ ECL Substrate Kit (Cat#226).

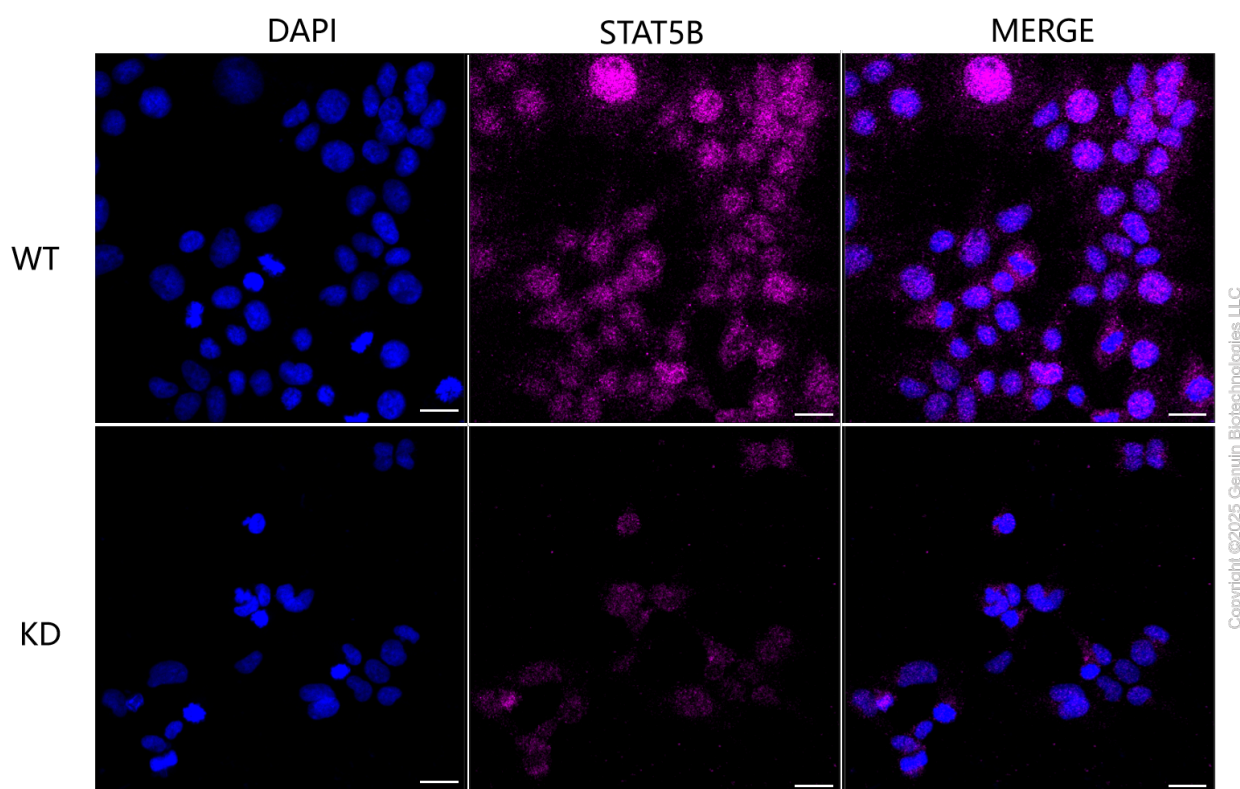


Western blotting analysis using anti-STAT5B antibody (Cat#62648). STAT5B expression in wild type (WT) and STAT5B shRNA knockdown (KD) HeLa cells with 20 µg of total cell lysates. β-Tubulin serves as a loading control. The blot was incubated with anti-STAT5B antibody (Cat#62648, 1:5,000) and HRP-conjugated goat anti-rabbit secondary antibody (Cat#201, 1:20,000) respectively. Image was developed using NaQ™ ECL Substrate Kit (Cat#716).



Copyright ©2025 Genuin Biotechnologies LLC

Validation of STAT5B knockdown using flow cytometry. Wild-type(WT, Blue) and knockdown(KD, Green) HeLa cells were stained with anti-STAT5B antibody (Cat#62648, 1:2,000) and analyzed using BD flow cytometer.



Immunocytochemical staining of HeLa cells using anti-STAT5B antibody (Cat#62648, 1:1,000), Top panel: wild-type (WT); Bottom panel: STAT5B shRNA knockdown (KD). Nuclei were stained blue with DAPI; STAT5B was stained magenta with Alexa Fluor® 647. Scale bar, 20 μ m.